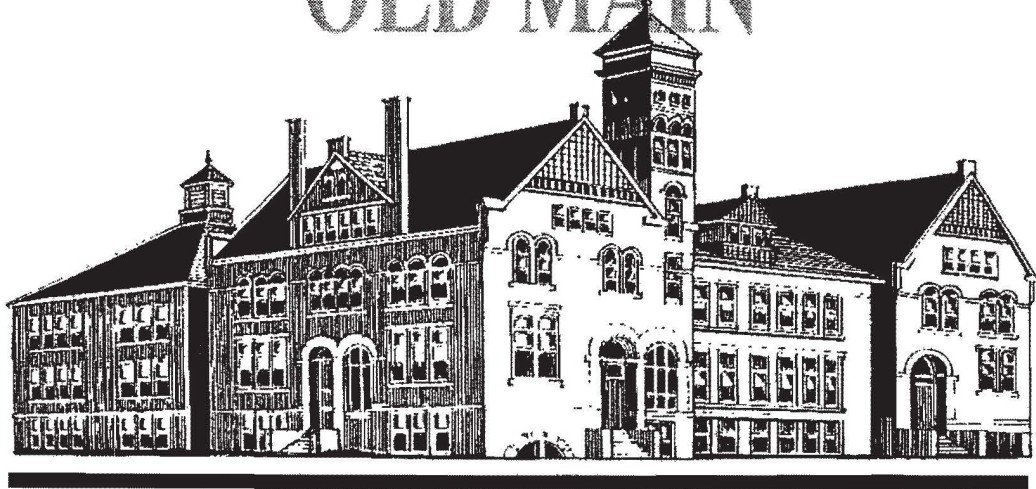


FERRIS STATE UNIVERSITY

Fact Book

1994-95

OLD MAIN



December 1994

Dear Colleague:

The *Ferris State University Fact Book 1994-95* is published for you, the students, faculty, staff, alumni, and friends of the University, who seek accurate information about Ferris. This project was conducted as a service to the University community by the Office of Institutional Studies in the Division of Academic Affairs. This fourth edition is a document that is designed to answer the most frequently asked questions about FSU.

It is with pleasure that we share the information with you. As a result of your edits to the document last year, information has been added to the students/enrollment section, the degrees/programs section, and the alumni section. In the organizational charts section, the Academic Senate and Cabinet are now included. We encourage you to review this work and solicit your suggestions for improvement of future issues. A comment form is provided in the back of this book.

Our appreciation is extended to the many offices that assisted us with the development of the information, including University Advancement's cover design. Special thanks go to Maureen Brockdorf and Nina Worth for their assistance in putting together this *Fact Book*.

Carol L. Maki
Director, Institutional Analysis

Mitzi A. Day
Data Analyst

Ferris State University
Division of Academic Affairs
Office of Institutional Studies
Big Rapids, MI 49307
(616) 592-3801

TABLE OF CONTENTS

GENERAL INFORMATION

Statement of Mission	1
Facts and Figures:	
History/Campus Size/Academic Divisions/Location	2
Educational Programs/Accreditation and Approval	3
Admissions	4
Student Costs	5
Financial Aid/Housing/Placement/Computing and Telecomm. Facilities	6
Campus Media/Library and Instructional Services	7
Timme Library	8
Student Organizations/Athletics/Cultural Events	9
Lifelong Learning/Technology Transfer Center	10
Points of Interest	12
Gifts to the University	14
Ferris State University Calendar	15
Further Information	16
Educational Grants and Scholarships	17
MAGB Awards to Faculty and Students	21

STUDENTS/ENROLLMENT

Enrollment Listing of Resident Students by County	23
Enrollment Listing of Non-Resident Students by State	24
Total Headcount Enrollment, Fall 1965-1994	25
FYES Enrollment/FTE Faculty	26
5-Year Headcount Enrollment Overview by College	27
Percent of Students by College	28
Comparative Enrollment Report by College	29
Enrollment by Age (Undergraduate Students Degree Seeking)	30
Enrollment by Age (Undergraduate Students Non-Degree Seeking)	31
Enrollment by Age (Graduate Students)	32
Enrollment by Age (First Professional Students)	33
Total Headcount Enrollment Compared to FTE	34
SCH/FTE/FYES	35
Ethnic Distribution	36
Enrollment by Program (Allied Health Sciences)	37
Enrollment by Program (Arts & Sciences)	39
Enrollment by Program (Business)	41
Enrollment by Program (Education)	43
Enrollment by Program (Optometry/Pharmacy)	45
Enrollment by Program (Technology)	46

TABLE OF CONTENTS

DEGREES/PROGRAMS

Degrees Conferred by Program (Allied Health Sciences)	49
Degrees Conferred by Program (Arts & Sciences)	51
Degrees Conferred by Program (Business)	53
Degrees Conferred by Program (Education)	55
Degrees Conferred by Program (Optometry & Pharmacy)	57
Degrees Conferred by Program (Technology)	58
Summary of Degrees Conferred at FSU	60
Approved Programs	61

FACULTY/STAFF

Full-Time University Staff by Job Category & Sex	65
Part-Time University Staff by Job Category & Sex	66
Total University Staff by Job Category & Sex	67
Distinguished Teacher Awards	68

ORGANIZATIONAL CHARTS

Board of Control	69
Board of Control/Executive Division	70
Academic Affairs Division	71
Office of Academic Affairs	72
Academic Affairs Division/College of Allied Health Sciences	73
Academic Affairs Division/College of Arts & Sciences	74
Academic Affairs Division/College of Business	75
Academic Affairs Division/College of Education	76
Academic Affairs Division/Enrollment Services	77
Academic Affairs Division/ Lifelong Learning	78
Academic Affairs Division/Library	79
Academic Affairs Division/College of Optometry	80
Academic Affairs Division/College of Pharmacy	81
Academic Affairs Division/College of Technology	82
Business Affairs Division	83
Student Affairs Division	84
University Advancement Division	85

TABLE OF CONTENTS

ALUMNI

Alumni Listing by State	87
Summary of Placement Activity for 1992-93 Graduates	88
Beginning Salaries for Associate Degree Graduates for 1992-93	89
Beginning Salaries for Baccalaureate Graduates for 1992-93	90
Recipients of Alumni Awards	91

BUDGET

Summary of 1993-94 Tuition Fees & Room/Board	93
--	----

FACILITIES

Summary of Facilities Owned or Rented by FSU(General Fund)	95
Summary of Facilities Owned or Rented by FSU(Non-General Fund)	96
Ferris State University Campus Map	97



General Information

STATEMENT OF MISSION

Ferris State University's mission is to educate students in a number of applied technology fields and in other selected professional fields where there is sustained and significant career potential. Ferris educates its students to be employable and capable of professional growth, and further, to contribute to their profession and to a constantly changing, global society.

Our Students

We are committed to providing our students with strong curricula emphasizing practical, usable skills blended with a relevant general education foundation. This is accomplished in a caring environment with personal attention and close faculty-student interaction. We offer educational opportunity, with an "open door" admission component, to a diverse array of students, including high school graduates, transfer students from other colleges and universities, as well as some non-traditionally prepared students. We also foster positive co-curricular experiences leading to a fulfilling student life.

Our Programs

We are committed to keeping our educational programs and services responsive to the changing needs of manufacturing, business, health care, and other industries and professions which are critical to Michigan's economy. We achieve this by actively fostering beneficial relationships with those who employ our graduates.

Our Employees

We are committed to high standards of performance and pride in accomplishment, with the understanding that the strength of our organization is our people. We embrace the concepts of equal opportunity, affirmative action, and cultural diversity. We encourage teamwork, professional growth, acceptance of responsibility, and recognition for achievement.

Our Communities

We are committed to being good neighbors with full participation in community life and community service. We share local access to educational experiences, business opportunities, cultural events, leisure pursuits, and a variety of other activities with our communities.

Our State

We are committed to contributing to the economic vitality of our State by providing a well-trained and educated work force. We are actively involved in applied research relative to the transfer, application and management of technology, and its relationship to our society.

NOTE: The Statement of Mission is in the process of being revised.

FACTS AND FIGURES

HISTORY

Ferris State University is named for its founder, Woodbridge N. Ferris (1853-1928), a respected Michigan educator and statesman who served two terms as the governor of the state of Michigan and was elected to the United States Senate.

Founded in 1884 as a private institution by Mr. Ferris, the institution became affiliated with the state of Michigan in 1950, was named Ferris State College in 1963 by the Michigan Legislature, and obtained university status in 1987.

The University's founding concept of providing students with marketable skills, though intended at the time for individuals who had lost their jobs following declines in the lumber and mining industries, remains relevant in today's fast-changing society. A distinctive combination of academic programs and a continuing tradition of career-oriented education have made Ferris a nationally recognized leader in preparing men and women for useful careers and enlightened citizenship in numerous health, technical, educational, business and other professional fields.

CAMPUS SIZE 600 acres

ACADEMIC DIVISIONS

- College of Allied Health Sciences
- College of Arts & Sciences
- College of Business
- College of Education
- College of Optometry
- College of Pharmacy
- College of Technology

LOCATION

The Ferris State University campus is located in Big Rapids, a west-central Michigan city of approximately 12,600 in the vacation-recreation region. The campus is readily accessible by the US-131 expressway and state highway M-20. Big Rapids is 55 miles north of Grand Rapids and within 200 miles of Chicago and Detroit.

In an effort to keep pace with changing needs and advances in technology, the Ferris campus has been updated and renovated over the years. The 600 acres of rolling hills along the western bank of the Muskegon River is dotted with 81 modern campus buildings.

EDUCATIONAL PROGRAMS

Ferris offers more than 100 educational programs through the Colleges of Allied Health Sciences, Arts and Sciences, Business, Education, Pharmacy, Technology, and Optometry.

These offerings lead to bachelor's and associate degrees and certificates and also include doctorates in optometry and pharmacy and master's degrees in information systems management and career and technical education.

For the most part, each college encompasses a cluster of related programs which are targeted to prepare students for specific careers. The colleges operate in facilities which have been specially designed and equipped to support their missions.

Ferris is a national leader in the development of the concept of laddering, which enables students to advance their careers by building on previous training. For example, an individual who has gained employment after completing a two-year degree may later seek career advancement by returning to Ferris and earning a bachelor's degree. This concept also permits students to readily transfer into Ferris programs.

ACCREDITATION AND APPROVAL

Ferris State University is accredited by the North Central Association of Colleges and Schools, and is certified by the State Approval Agency of the Department of Education and the Veterans Administration Michigan Department of Education for the education and training of veterans to attend Ferris under the provisions of Title 38, United States Code.

The National Accreditation Council for Environmental Health Curricula of the National Environmental Health Association has accredited the Industrial and Environmental Health Program.

The Commission on Accreditation of Allied Health Programs has accredited the Health Information Sciences and Respiratory Care Programs. The Medical Laboratory Technician and Medical Technology programs are accredited by the National Accrediting Agency for Clinical Laboratory Sciences. The Radiography and Nuclear Medicine Technology Programs are accredited by the Joint Review Committee on Education in Radiologic Technology and Joint Review Committee on Education in Nuclear Medicine Technology.

The American Dental Association Commission on Dental Accreditation has accredited the Dental Hygiene and Dental Technology programs.

The associate degree nursing program is accredited by the Michigan State Board of Nursing. The Bachelor of Science in nursing program is accredited by the National League for Nursing.

The Accountancy program is accredited by the State Board of Accountancy.

The American Bar Association has accredited the Legal Assistant program.

GENERAL INFORMATION

The Optometry Doctoral (O.D.) Program and the Optometric Technician Program are accredited by the Council on Optometric Education. The Opticianry Program is accredited by the Commission on Opticianry Accreditation.

The Pharmacy Program is accredited by the American Council on Pharmaceutical Education.

The Surveying Program is accredited by the Accreditation Board for Engineering and Technology.

All Teacher Education Programs are approved by the Michigan Department of Education/ State Board of Education.

Construction Management is accredited by the American Council for Construction Education.

Criminal Justice - Specialist is accredited by Michigan Law Enforcement Officer Training Council. The Criminal Justice - Corrections Officer program is accredited by Michigan Corrections Officer Training Council.

Tot's Place is accredited by the State of Michigan Department of Social Services.

The Social Work program is accredited by the Council on Social Work Education.

ADMISSIONS

Ferris State's diverse curricula allows it to maintain the tradition of admitting most mature, serious-minded applicants. Admission to certain programs must depend upon consideration of the applicant's qualifications for such a program. Specific program requirements are listed in the University catalog.

STUDENT COSTS

The average annual cost for a Michigan resident to attend Ferris (based upon 1994-95 rates), including tuition, room and board, fees, and estimated academic and personal expenses, is \$9,286.

1994-95 Costs	Semester	Year
Undergraduate (Michigan resident)		
Tuition (12-16 credit hours)	\$1,706.00	\$3,412.00
Room and Board (7-day plan)	\$2,085.50	\$4,171.00
Sub Total	\$3,791.50	\$7,583.00
Books and Supplies (estimate)	\$295.00	\$590.00
Personal Expenses (estimate)	\$541.00	\$1,082.00
Refundable Fees	\$15.50	\$31.00
 Michigan Undergraduate Total Expenses (estimated)	 \$4,643.00	 \$9,286.00
Undergraduate (non-resident)		
Tuition & Fees	\$3,455.50	\$6,911.00
Part-time Student (1-11 credit hours)		
Michigan Tuition	\$143 per credit hour	
Non-Resident Tuition	\$288 per credit hour	
Graduate Student		
Michigan Tuition	\$184 per credit hour	
Non-Resident Tuition	\$368 per credit hour	
Professional School Tuition (Doctor of Optometry & Doctor of Pharmacy)		
Michigan Resident	\$3,564/semester	\$7,128/year*
Non-Resident	\$7,206/semester	\$14,412/year*
*NOTE: The tuition for fourth professional year students in the Doctor of Optometry program is \$10,692/\$21,618. The year runs all three semesters.		
Family Apartments		
One Bedroom	\$326 per month	
Two Bedroom	\$347 per month	
Two Bedroom (new)	\$408 per month	
Three Bedroom (new)	\$458 per month	
Alternate Meal Plan		
Room and Board (5-day plan)	\$1,935.50	\$3,871.00
13 meal flex plan	\$1,982.50	\$3,965.00

GENERAL INFORMATION

FINANCIAL AID

More than 65 percent of the students presently enrolled at Ferris State receive some type of financial aid through federal, state and Ferris programs, including scholarships, grants, loans and student employment. Ferris State University awards more than \$28 million in student aid annually.

Most financial aid is based on need and is intended to assist students whose families cannot pay all or perhaps any of the college costs. Information on financial aid programs may be obtained by contacting the office of scholarships and financial aid.

HOUSING

Ferris State has 19 units of University-built residence halls which can accommodate approximately 5,200 students. Each has a hall director and student resident advisors responsible for its operation. The University also maintains dining service facilities for students living in the University-owned halls. Married students or students with dependents may apply for one of the 356 college apartments located on campus.

PLACEMENT

A Ferris State University education is supplemented by effective career planning resources and placement services. The career planning and placement office serves graduates searching for career employment and maintains a Career Information Center to assist students exploring career options and employment resources. Over 175 employer recruiting visits are made to campus each year for the purpose of interviewing candidates for job opportunities. Annual surveys of graduating students show that approximately 73 percent of FSU graduates find placement in occupations directly related to their major field of study. Last year's placement report showed many programs with an overall placement rate exceeding 89 percent. Alumni also are eligible to receive placement services at a nominal charge.

COMPUTING AND TELECOMMUNICATIONS FACILITIES

Computing laboratories are available to students in various locations on campus. A high speed, wide area network provides broad campus access to the labs, Internet, and other computing resources such as the library computer. A substantial number of mainframe, midrange and microcomputer systems are available for student, faculty and staff use. The instructional technology department facilitates distance learning activities to remote locations as well as provides media support for classroom instruction. The End-User Computing Support Department and the Lundberg Bookstore provide consulting services to assist users in the selection of computer hardware and software. The telecommunications department offers a variety of voice, video and data services to students, faculty and staff. The computer center houses the University's IBM 3090 200E mainframe computer which supports on-line processing for academic and administrative users.

CAMPUS MEDIA

Ferris offers students a variety of media, including a campus newspaper and local cable system (channel 7).

The Torch, which is published twice weekly, informs students of University news, events, and other related campus issues. FSU-TV Cable 7 serves the campus and community with educational and public service television programming.

The *FYI* is an internal newsletter published weekly for faculty and staff, and the *Crimson & Gold*, published three times yearly, is aimed at keeping alumni informed of campus events. Some of the colleges and programs on campus also publish their own alumni publications.

LIBRARY AND INSTRUCTIONAL SERVICES (LIS)

Serving all areas of the University, library and instructional services (LIS) offers access to more information from different sources on site and around the world in varying formats than ever before. Graduating from Ferris with a knowledge of how to find necessary information to solve problems is critical to becoming a contributing professional and citizen in a continuously changing global, pluralistic and technological information-based society.

The University library system, which consists of the Abigail S. Timme Library and a branch facility, the Health Sciences Library, houses a collection approaching three quarters of a million books, periodicals, Michigan and U.S. government documents, research reports, audio-visual and other materials. The libraries' holdings are integrated by format, and linked electronically through the online public access catalog (OPAC). The local area network (LAN) hosts an expanding collection of locally loaded commercial databases. Searching these sources is a viable option in various microcomputer labs and offices located around campus.

The Timme Library is a depository for U.S. Bureau of Census and State of Michigan publication, and shares this status with Northwestern Michigan College for other federal documents. It also is designated a Patent and Trademark Depository Library. The Timme Library houses the campus libraries' media collection and a microcomputer laboratory in an area called the Individualized Learning Center (ILC). The University Archives contains materials related to Ferris State University's history as well as official records and faculty publications.

Electronic access to the University's library collections as well as those of a growing number of other institutions in the northwest quadrant of lower Michigan is made possible through FerrisNet, which was established to foster interlibrary cooperation. The University is a member of MichNet and Internet, and as a subscriber to OCLC and its document delivery system, the Ferris library system is connected to more than 14,000 national and international libraries/information centers.

GENERAL INFORMATION

FERRIS STATE UNIVERSITY TIMME LIBRARY Fall, 1993

Holdings

Monograph Titles	180,480
Serial Titles	5,440
Periodical Subscriptions	3,976
Physical Volumes	234,956
Items Barcoded for Circulation	340,765
Microforms (pieces)	3,223,428
U.S. Documents	62,479
Cartographic Materials	6,231
Miscellaneous Media (pieces)	66,473
Manuscripts (linear feet)	821.5

Services Averaged by Week

Hours Open (with services)	79
Hours Open (additional hrs as study space)	5
Attendance Main Library	7,978
Attendance Health Science Library	1,627
Reference Transactions	989
Online Database Searches	1
CD-ROM Database Searches	1,888
Group Presentation	11
Interlibrary Borrowing	1,948
Interlibrary Lending	3,241

NOTE: Statistics reflect current IPEDS report.

Source: FSU Library

STUDENT ORGANIZATIONS

Student-related issues receive a great amount of attention from the student affairs department. Included in the student affairs division are the following units: Rankin Student Center, Birkam Health Center, Counseling Center, minority affairs, student judicial services, student leadership and activities, residential life, dining services, career planning and placement, intercollegiate athletics and university recreation.

To help students grow socially and culturally, as well as academically, Ferris State has more than 150 organizations on campus including 60 related to instructional programs. Another 23 are related to extracurricular interests. The Interfraternity Council oversees 15 social fraternities, and the Panhellenic Council oversees six social sororities. There are seven honor societies, ten professional fraternities and recognition groups and two service organizations. There are also 12 religious organizations.

ATHLETICS

The Ferris State University Bulldogs are members of the National Collegiate Athletic Association (NCAA). FSU varsity teams compete in the Central Collegiate Hockey Association (NCAA Division I) in ice hockey, the Midwest Intercollegiate Football Conference (NCAA Division II) in football and the Great Lakes Intercollegiate Athletic Conference (NCAA Division II).

Ferris students participate in 12 varsity sports.

Annually, more than half of the student body participates in organized recreational sports activities, including extensive intramural and club sport programs. Other students participate in informal recreation activities.

Ferris provides ample facilities for athletics and recreation, including a field house with pool, weight room, basketball and volleyball courts and indoor track; a golf course; a sports complex including full and half-size ice rinks and volleyball and wrestling facilities; racquetball courts and indoor and outdoor tennis courts.

CULTURAL EVENTS

Concerts by Ferris State Music Center organizations such as the West Central Concert Band, Chamber Orchestra, Jazz Ensemble, Concert Choir, and Ferris Wheels (men's glee club), and productions of Ferris Theatre are augmented by appearances of professional music, drama and dance organizations and other performing arts groups.

The Ferris Art Gallery features exhibits of paintings, prints, photography, sculpture and crafts, as well as special exhibits featuring leading Michigan artists, FSU faculty and students.

The Arts and Lectures Committee offers a schedule of lectures, concerts and films, while Entertainment Unlimited presents pop/rock and comedy concerts and other events of a contemporary nature.

GENERAL INFORMATION

Ferris also hosts the annual "Festival of the Arts," a month-long celebration featuring visiting artists, writers, arts presentations, workshops, lectures and other cultural events.

Four outdoor sculptures are on display on campus: "I'm Late," an abstract metal work; a bronze centennial memorial statue of founder Woodbridge N. Ferris; a large welded steel Bulldog, a rendition of the FSU athletic mascot; the World Sculpture. A bust of Ferris is on display in the Starr Educational Center in the G. Mennen Williams Auditorium lobby.

LIFELONG LEARNING

Lifelong Learning provides a wide range of continuing education and public service programs, conducted both for credit and non-credit, enabling many adults and youths to keep abreast of changes in their field of interest. Ferris offers a variety of conferences, institutes, seminars and workshops ranging from one day to three weeks in length. Opportunities for participation in nationwide teleconferences and telecourses are also provided.

The Evening College program is offered for area residents and others unable to attend college on a full-time basis who wish to pursue a degree or take classes for personal growth. Lifelong Learning provides logistical support for Ferris summer school programs.

Off-campus degree programs in selected curricula are offered at strategic sites throughout the state and are designed to meet the needs of the adult learner. Ferris off-campus programs are offered in cooperation with the academic colleges through the main campus and Regional Centers in Grand Rapids, Traverse City and Flint.

Business, industrial and labor education needs are served through customized training seminars. Faculty/trainers have industry-specific experience, offering valuable resources to training projects. Grant programs can provide assistance to qualifying industries.

Lifelong Learning serves a large number of people in its public service role. The Business Development Center, the Senior Employment Program, and the Learning/Nutrition Project activities all exist to help their constituents in a variety of ways.

TECHNOLOGY TRANSFER CENTER

Technology Transfer Center (TTC) is a department of the College of Technology which develops technical services and training opportunities for clients of the University. Services available through the TTC mirror the technical programming of the major degree programming areas within the College of Technology. Assistance is provided on a project-by-project basis through three TTC service divisions; Technical Services, Technical Training, and Entrepreneurial Services.

The skills and knowledge of College of Technology faculty are one reason TTC has served as a respected provider of essential services to over 900 manufacturing and technical service sector companies since 1984. The expertise of faculty, staff and senior level students are utilized to assist Michigan's manufacturing and commercial-industrial community. TTC technical services include ISO-9000 and quality improvement, cost reduction programs, product design assistance, on-site plant floor problem solving, plant layout design for synchronous manufacturing, automation design, project management, and state-of-the-art rapid prototyping. TTC custom technical training services include (but not limited to) plastics technology, building and highway construction quality, quality systems, welding technology, machine tool theory and practice, and CAD design.

GENERAL INFORMATION

TTC also specializes in the development of industry-specific training partnership programs through its highly successful Training Institute program. Partnerships between TTC and state agencies and associations include: Michigan Asphalt Paving Association, Michigan Mineral Resources Association, Michigan Department of Transportation, West Michigan Office Furniture Council, Greater Grand Rapids Manufacturers Association, Mecosta County Chamber of Commerce, Industrial Technology Center (Ann Arbor), Midwest Manufacturing Technology Center (NIST), Research and Technology Institute (Grand Rapids), and West Central Michigan Defense Procurement Center. TTC also has national partnerships with the Air Conditioning Contractors of America and the Management Association of Private Photogrammetric Surveyors.

Technology Transfer Center is located at 1020 East Maple Street near the Big Rapids Industrial Park, and at the Applied Technology Center in Grand Rapids, Michigan. Phone: 616-592-3774, Fax: 616-796-1448.

GENERAL INFORMATION

POINTS OF INTEREST

Alumni Building (1929) - The oldest building on campus, it contains administrative offices, recreation facilities, and faculty offices and classrooms for the College of Arts and Sciences..

Automotive Center (former Technical and Applied Arts Center) (1956) - Comprises the instructional and lecture facilities for automotive services, automotive body, automotive machine, and auto and heavy equipment management. Several of the automotive programs offer associate and bachelor degrees.

Business Building (1970) - Houses the auditorium, classrooms and offices of the College of Business. Extensive terminal and mainframe computer facilities include one of the state's largest "library concept" microcomputer laboratories used for educational purposes.

Bishop Hall/College of Education (1967) - Built as a residence hall, it was remodeled in 1986 to house the College of Education administrative offices and classrooms as well as such programs as Collegiate Skills and Intensive English.

Construction Technology Center (1962) - Provides lecture facilities for the energy systems technology and construction engineering technology program areas.

Creative Arts Center - This building houses the studios, classrooms, and faculty offices needed for the Studio Arts in the College of Arts and Sciences.

Ewigleben Sports Complex/Ice Arena - Comprises two indoor ice rinks and a recreational wing with facilities for intercollegiate hockey, recreational hockey and skating, basketball, and volleyball, all completed in 1975. An addition completed in 1981 includes a combatives room, fitness and sports medicine facilities and a mini-arena.

Heavy Equipment Technology Building (1987) - A 52,000-square-foot building accommodating students in the heavy equipment and auto programs. The HET building is the largest facility in the country dedicated to training heavy equipment and heavy duty engine technicians.

Holiday Inn Hotel and Conference Center (1993) - The facility is located adjacent to the Katke Golf Course and overlooks the campus. The complex houses 16,772 square-feet of meeting facilities, 118 guest rooms, banquet facilities and a restaurant. The conference facilities are used for continuing education activities, conferences and workshops.

Instructional Resource Center - contains large lecture halls, distance learning room, and media services for the whole campus.

Katke Golf Course (1975) - An 18-hole golf course on campus, it is used for instructional, athletic and recreational purposes.

Pennock Hall/College of Optometry (1968) - Built as a residence hall, it was renovated in 1977 to serve as the permanent home for the College of Optometry.

Pharmacy Building (1972) - Designed to house all operations of the College of Pharmacy, including specialized laboratories and the model pharmacy, and also contains an antique pharmacy exhibit.

Plastics Engineering Technology Center (1987) - Built with funds provided by the plastics industry, the center offers hands-on training in plastics processing, tool design and tool building, quality control and material and product testing.

Racquet Facility (acquired in 1980) - The facility contains tennis and racquetball courts and weight lifting and aerobics facilities for intramural and intercollegiate athletics and is open to the general public as well.

Rankin Center (1957) - Remodeled and updated in 1987, it is the hub of campus, housing the James L. Lundberg Bookstore, recreational facilities, offices for the student newspaper, student government and various other student organizations, catering/booking offices and the Ferris Art Gallery. On the administrative side, there are offices for minority affairs, student judicial services, student activities, career planning and placement, personal counseling, the vice president for student affairs and the dean of student life. Additional services include three dining facilities, meeting rooms and a large ballroom/banquet room.

Science Hall - Originally built in 1956 and remodeled and updated in 1967, this building provides specialized classrooms and laboratories for courses in mathematics and the physical and biological sciences. It also houses the Rawlinson Observatory.

Spathelf Center for Allied Health (1979) - This four-level structure contains the specialized classrooms, laboratories and offices for the students, faculty and administration of the College of Allied Health Sciences.

Starr Educational Center (1961) - Provides classrooms and offices for the College of Arts and Sciences, holds offices of the President and the Vice President of Academic Affairs, and houses the G. Mennen Williams Auditorium, seating 1,700.

Swan Technical Building (1966) - This five-story academic structure houses the majority of programs in the College of Technology, including the electronics, construction, graphic arts and manufacturing departments, along with CAD-CAM labs serving more than 2,000 students, automation labs and a resource center.

Technology Transfer Center (TTC) (donated in 1984 by Hitachi Metals International) - This 9,000-square-foot building located off campus on Big Rapids' east side contains a fully equipped machine shop, computer laboratory including computer aided design stations, classrooms, a conference room and offices. (see separate section on the Center's function)

Timme Library - Located at the center of campus, the 57,000 square foot, three-story Timme Library houses approximately 500,000 volumes with collections emphasizing health sciences, business and technology. There is an increasing array of electronic information sources and expert faculty and staff to assist the patron - student, faculty or community resident.

Tot's Place (instituted 1987) - Located on the first floor of Bishop Hall, it is the laboratory for the child development program. Tot's Place provides child care for children of students and faculty as well as Big Rapids community residents.

Wink Arena - located in the Health and Physical Education Building and named after the late James M. Wink.

GENERAL INFORMATION

GIFTS TO THE UNIVERSITY

Directed by the volunteer efforts of the Development Council and Ferris faculty and staff, private giving to the University in fiscal year 1993 totaled \$2,267,554 including cash contributions of \$1,015,226 and in-kind gifts of approximately \$1,252,328.

Contributions may be made in many ways:

- Phoenix Society: \$100,000 in cash or in-kind gifts or \$150,000 in deferred giving (individuals or companies);
- Phoenix Society Associates: \$50,000 cash or \$75,000 in deferred giving (individuals only);
- Presidents Club: \$10,000 in cash or in-kind gifts payable over a 10-year period, or a \$35,000 life insurance policy, charitable remainder trust or by other deferred acceptable arrangements;
- Endowment Society: Ferris is named as a beneficiary in estate plans;
- Fund for Excellence annual unrestricted giving: Century Club (\$100-\$499), University Club (\$500-\$999), Woodbridge N. Ferris Society (\$1,000+);
- Annual giving clubs for gifts restricted to an academic area or program: Lifetime Dean's Club (\$2,000 or \$500 per year for four years), Dean's Club (\$500+), Dean's Club Associates (\$100-\$499);
- Bulldog Club: Top Dog (\$1,000), Coach (\$500), Captain (\$250), Booster (\$100), Friend (\$50);
- Annual gifts under \$100;
- Gifts from parents and alumni;
- Gifts from business and industry, including cash, equipment and materials, and matching of employee financial gifts;
- Gifts and grants from foundations;
- Gifts in memory or in honor of individuals;
- Matching gifts (companies or corporate foundations match their employees gifts to Ferris from a one-to-one to a four-to-one ratio).

FERRIS STATE UNIVERSITY CALENDAR

Fall Semester, 1994-95

Aug. 25-26	Registration
Aug. 29	Classes begin
Sept. 5	Labor Day - no classes
Sept. 6	Classes resume
Oct. 19	Mid-term warnings due
Oct. 31	Last day for approved unqualified W grade
Nov. 24	Thanksgiving recess begins
Nov. 28	Classes resume
Dec. 9	Last day of classes
Dec. 12	Examination week begins
Dec. 16	Last day of examination week
Dec. 17	Fall Commencement

Winter Semester, 1995

Jan. 5-6	Registration
Jan. 9	Classes begin
Jan. 16	Martin Luther King Day - no classes
Jan. 17	Classes resume
Mar. 1	Mid-term warnings due
Mar. 4	Spring recess begins
Mar. 13	Classes resume
Mar. 20	Last day for approved unqualified W grade
Apr. 13	Easter recess begins
Apr. 17	Classes resume
Apr. 28	Last day of classes
May 1	Examination week begins
May 5	Last day of examination week
May 6	Spring Commencement

Summer Session, 1995

	Early Registration:
Mar. 20 - Apr. 21	Currently Enrolled Students
Apr. 10 - Apr. 21	Former Students
Apr. 10 - Apr. 21	Faculty/Staff
May 14	New Student Orientation
May 15	Walk-In Registration
May 16	Classes begin*
May 29	Memorial Day - no classes
July 3 - 4	Independence Day recess - no classes University Offices will be open July 3
July 11	Last day to drop class with "W" grade
Aug. 10	Last Day of Summer Semester Classes
Aug. 14	Faculty Grades for Summer Semester DUE (9:00 a.m., Registrar's Office)

*** Double Paced Classes:**

First Session: Begins May 16/ Ends June 27
 Second Session: Begins June 28/Ends August 10

GENERAL INFORMATION

FURTHER INFORMATION

Address all correspondence to the appropriate individual or department at: Ferris State University, 901 S. State Street, Big Rapids, MI 49307.

The telephone number for the Ferris State switchboard is (616) 592-2000, and the telephone operator can assist you. Most colleges, departments and offices also have their own numbers. Some frequently called numbers are listed below:

Academic Deans Offices

College of Allied Health Sciences.....	592-2269
College of Arts and Sciences	592-3661
College of Business	592-2422
College of Education.....	592-3648
College of Optometry.....	592-3703
College of Pharmacy	592-2254
College of Technology.....	592-2898

Student Services

Admissions	592-2100
Assessment Services & Enrollment Research	592-3628
Business Office.....	592-2125
Career Planning/Placement Services	592-2685
Financial Aid	592-2110
Orientation	592-2105
Registrar	592-2790
Residential Life (Housing)	592-3745

General

Alumni relations	592-2346
Athletic department.....	592-2860
Library	592-3602
Lifelong Learning	592-2340
Public Safety.....	592-5000
Rankin Center.....	592-5916
Student activities.....	592-5936
University Advancement.....	592-3815

EDUCATIONAL GRANTS AND SCHOLARSHIPS

FEDERAL The Federal Pell Grant
The Supplemental Educational Opportunity Grant

STATE The Michigan Educational Opportunity Grant Program
The Michigan Adult Part-Time Grant Program

INSTITUTIONAL

Woodbridge N. Ferris Scholarship Program:

Founder's Scholarship
President's Scholarship
Dean's Scholarship
Ferris Academic Opportunity Scholarship
Valedictorian/Salutatorian Award
Kelso Battle Scholarship
Community College Transfer Scholarship

Institutional Grants and Scholarships:

Administrative Management Society Junior Standing Achievement
Scholarship
Alumni Scholarship
American College of Health Care Admin's
American Society for Quality Control Scholarship
Andersen Consulting Exc. in Education
Architectural Building Products Scholarship
ASHRAE - American Society of Heating, Refrigeration and Air
Conditioning Engineers
Tommy Armour Golf Company Scholarship
The Blanche E. Arnold Scholarship
Athletic Grants
Bausch & Lomb "Contact with the Future" Educational Travel Grant
Bausch and Lomb Excellence in Academic Achievement Scholarship
Helen Bennett Memorial Award
Ken Betz Automotive Service Scholarship
Owen Bieber Scholarship
Thomas Bingman Memorial Scholarship
George Marcus Bowlby Scholarship for Non-traditional Students
John & Sue Bradac Criminal Justice
Butler Paper Scholarship
Cascade/Paragon Scholarship
John Celestino Endowed Scholarship
Brian Chapman Memorial Professional Golf Management Scholarship
The Elizabeth Claucherty Endowed Scholarship
College of Business Memorial Scholarship Fund
The Orrin B. Davenport Scholarship
Stanley J. Dean Memorial

GENERAL INFORMATION

EDUCATIONAL GRANTS AND SCHOLARSHIPS

INSTITUTIONAL, CONT.

The William Deck Scholarship Fund
Delta Dental Fund
The William E. Dengler Memorial Pharmacy Scholarship
Dental Hygiene Alumni Scholarship
DOW-Industrial Chemistry Technology Scholarship
Jas Draper & Keith Treiber Dental
Gregory Dreuth Memorial Scholarship
EDS Automotive/Heavy Equipment Management
Ewigleben International Student Endowed Scholarship
The Dean and Mrs. Ben Fairman Scholarship Fund
The Federated Garden Clubs of Michigan Scholarship
Ferris Grants-in-Aid
Phil Flanders Plastics Brotherhood Association Scholarship
The C. Jerry Ford and Mary E. Ford Memorial Scholarship
FSC Outstanding Minority Student
FSC Transfer Student
FSU Dining Service Scholarship
FSU Women's Intercollegiate Athletics
Richard Faber Loan
Farmers Insurance Group
Fenn & Associates
W. N. Ferris Scholarship
The Ernie Fuller Scholarship
Seymour Galina Grant
Debbie Garner Memorial Scholarship
General Mills "Hungry Minds"
Golf Manufacturers and Distributors Association Scholarship
The James A. Gould Memorial Pharmacy Student Assistance Fund
The Richard G. Hallisy Student Assistance Fund
H. S. Die & Engineering, Inc.
Charles Hampton Memorial Endowed Scholarship
Handicapped Student Scholarship
Head Golf Scholarship
Alan A. Heisler Memorial Scholarship
The Kurt Hellthaler Endowed Memorial Ophthalmic Dispensing Award
Hoexum Scholarship
Orville C. Hoffman, Jr. Endowed Scholarship
George N. Holcomb Memorial Scholarship Fund
Ansel C. Hook Memorial
John & Diana Hoyt Plastics Technology
Hurst Mechanical, Inc./Refrigeration Engineering, Inc. Scholarship
Independent Printing Co., Inc. Annual Scholarship
Ingersoll-Rand Heavy Equipment Technology Scholarship

EDUCATIONAL GRANTS AND SCHOLARSHIPS

INSTITUTIONAL, CONT.

Instrument Sales and Service Scholarship
Intensive English
Chas. Jehnsen Heavy Equipment Endowment
The Jerry Jourdain Endowed Memorial Scholarship
W. C. Judson Endowed Scholarship
Gordon Kamstra Memorial Endowed Scholarship
Karlis K. Kazerovskis Endowment
The Fred W. Kellogg Scholarship
The Maude Korstange Scholarship
Richard S. Labroff Endowed Scholarship
Jack and Karen LeBarre Scholarship
Lewis & Lewis Surveying Scholarship
Thomas F. Love Endowed Swimming Scholarship
The Ruby MacNeill Endowed Memorial Scholarship
Donald and E. Lyle Magee Scholarship
Dr. Vijay Mahida Surveying Scholarship
Minnie Mould Marsh Endowment
Stephen Edward Martin Memorial Award
The Jack Marvel Surveying Scholarship
The Julia B. McCormick Scholarship Fund
Michigan Association of Commercial Dental Labs Scholarship
Michigan Auto Parts Association Scholarship
Michigan Construction Equipment Dealers Association Scholarship
Michigan Optometric Association Auxiliary Scholarship
Michigan Society of Registered Land Surveyors Scholarship
Mid-Michigan Engineering & Survey Co., Inc. Scholarship
Colonel Charles A. Mount and Dorothy Mount Memorial Scholarship
Jack M. Newcomb
The Nordman Foundation Scholarship
Northamerican Heating and Air Conditioning Association Scholarship
Outer Drive Hospital Auxiliary Scholarship
Warren C. and Beverly A. Parker Scholarship Endowment
The Perialas Challenge
PGA Foundation Scholarship for Minority Students
Prakken Scholarship
The David P. Prior Scholarship
The Progressive Engineering Consultants of Grand Rapids, Inc.
Scholarship
The Allen Puterbaugh Scholarship
Mylo Ragan Endowed Scholarship
The Rautiola/Nartron Tennis Scholarship
Geff Reinke Endowed Scholarship
Vincent J. Salierno Scholarship

GENERAL INFORMATION

EDUCATIONAL GRANTS AND SCHOLARSHIPS

INSTITUTIONAL, CONT.

Joseph D. Sasaki Scholarship Fund
Donald G. Saum Surveying Scholarship
Bill & Lynne Scheible
Sarah Shell Scholarship Award
Mike Shira Health Systems Management Scholarship
Silhouette Optical Student Grant Program
John R. Smith Memorial Endowed Leadership Scholarship
S. Fl. Society of Plastics Engineers
Victor and Mercedes Spathelf Scholarship
Special Ability-Based Scholarship
SPE South Florida Section Scholarship
Harry S. Swartz Pharmacy Administration Award
Surveying Advisory Committee Scholarship
Walter J. Stevenson Scholarship Fund
James Stewart Memorial Fund Scholarship
Ronald Keith Strohkirch Memorial Scholarship
George Storm Memorial Tech'l Teacher Ed.
Harry S. Swartz Pharmacy Administration
Anne Szabunia Memorial Scholarship
Fred E. Taylor Endowed Scholarship
Jon C. and Margaret A. Taylor Student Assistance Fund
Tenth Congressional District Scholarship
Toyota Higher Ed Program
Trans-matic Manufacturing
C. Alan Tressler Memorial Scholarship Fund
Daniel Tyler Scholarship
Upjohn Biotechnology Control Scholarship and Internship
Upper Division Academic Scholarship
Urban Land Consultants Scholarship
Varilux II Student Grant
The Helen Ferris Vartan Scholarship Fund
Vision Service Plan Academic Achievement
Vision Service Plan Scholarship
WBDC Incorporated Scholarship
The Dr. Andrea L. Warfield Memorial Endowed Scholarship
Wayne County Society of Optometrists Scholarship
West Central Chapter of the Michigan Society of Registered Land
Surveyors Scholarship
West Michigan Dental Society
Dean A. Whitehead Memorial Scholarship
Robert F. Williams Scholarship
Wyatt Cafeterias Endowed Scholarship Fund

Source: 1993-1995 School Bulletin/Board-Approved Scholarship Funds List (Board of Control Office)

MICHIGAN ASSOCIATION OF GOVERNING BOARDS

The Michigan Association of Governing Boards (MAGB), an organization of the governing bodies of the thirteen State-supported colleges and universities of Michigan, has, since 1982, been hosting an awards convocation and dinner to honor students and faculty of member institutions for scholarly activity and public service.

Ferris State Faculty Honored Include:

1982	Gerald E. Lowther	Optometry
1982	Richard A. Santer	Arts & Sciences
1983	Herbert L. Carson	Arts & Sciences
1983	Nancy P. Uniacke	Optometry
1984	Everett J. Nienhouse	Arts & Sciences
1984	Ann Marie Remp	Business
1985	Ada Lou Carson	Arts & Sciences
1985	Robert E. Friar	Arts & Sciences
1986	Mary L. McCorriston	Arts & Sciences
1986	Michael E. Ryan	Arts & Sciences
1987	Charles R. Hurt	Arts & Sciences
1987	Mark L. Pletz	Optometry
1988	Robert J. Krueger	Pharmacy
1988	Rose Ann Swartz	Business
1989	Richard Pisacreta	Arts & Sciences
1989	Katherine Manley	Education
1990	Robert C. Ferguson	Arts & Sciences
1990	J. James Saladin	Optometry
1991	John P. Caserta	Arts & Sciences
1991	Gary C. Horn	Arts & Sciences
1992	Phillip Sterling	Arts & Sciences
1992	Elizabeth Turpin	Arts & Sciences
1993	Mark Curtis	Technology
1993	Marilyn Gillette	Arts & Sciences
1994	Lynn Bartholome	Arts & Sciences
1994	Michael P. Keating	Optometry

Student Recipients:

1982	Pamela Sue Fitch	Allied Health
1982	Steven Mark Harvey	Business
1983	Douglas Totten	Optometry
1983	Beth Trombley	Pharmacy
1984	Michele Behne	Arts & Sciences
1984	Kevin Lokar	Arts & Sciences
1985	David Gough	Business
1985	Kathleen Spuller	Arts & Sciences
1986	Bradford Krueger	Arts & Sciences
1986	Diedre Nordlund	Pharmacy
1987	Ann Marie Wilson	Pharmacy
1987	Mark Swan	Optometry
1988	Earl Heron	Technology
1988	Patricia Hoard	Optometry
1989	Lee Peplinski	Optometry
1989	Lisa Kluetz	Pharmacy
1990	Mary Jo Horn	Optometry
1990	David J. Miller	Pharmacy
1991	Alan R. Hopkins	Technology
1991	Brenda L. Spedowski	Business
1992	Jane A. Tughan	Allied Health Sciences
1992	Thomas C. Dowling	Pharmacy
1993	Steven Frederickson	Technology
1993	Ann Marie Boyke	Optometry
1994	Jennifer Pisano King	Arts & Sciences
1994	Chris Vsetula	Technology

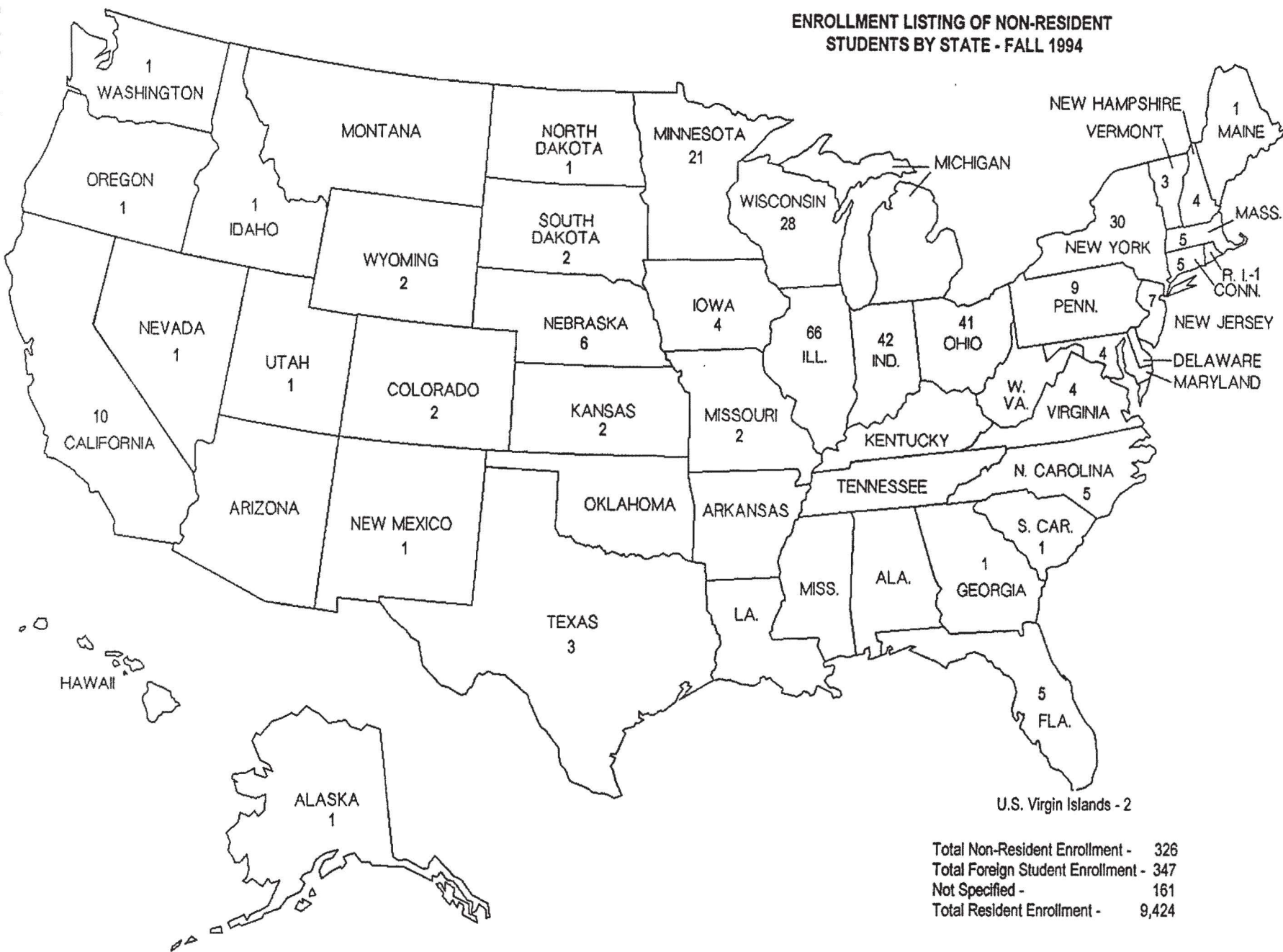
Source: Office of Academic Affairs

Students/Enrollment



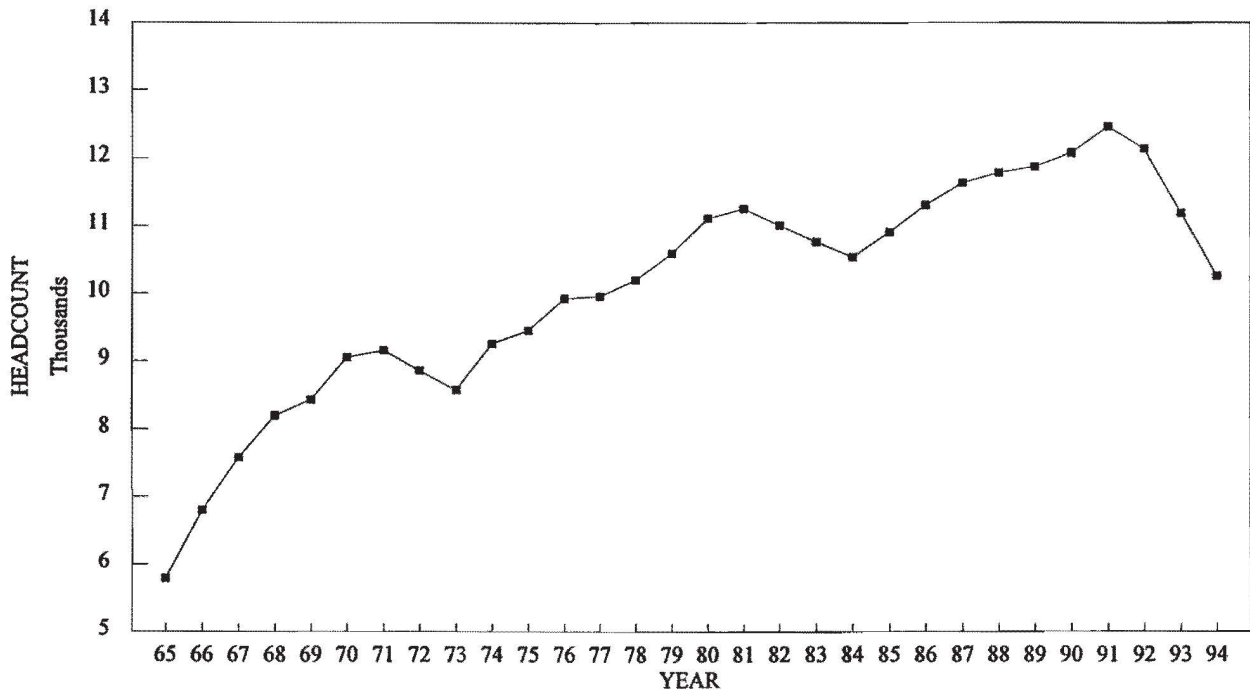
Source: Fall Semester Enrollment Report,
Office of the Registrar

ENROLLMENT LISTING OF NON-RESIDENT STUDENTS BY STATE - FALL 1994



Total Non-Resident Enrollment - 326
 Total Foreign Student Enrollment - 347
 Not Specified - 161
 Total Resident Enrollment - 9,424

TOTAL HEADCOUNT ENROLLMENT

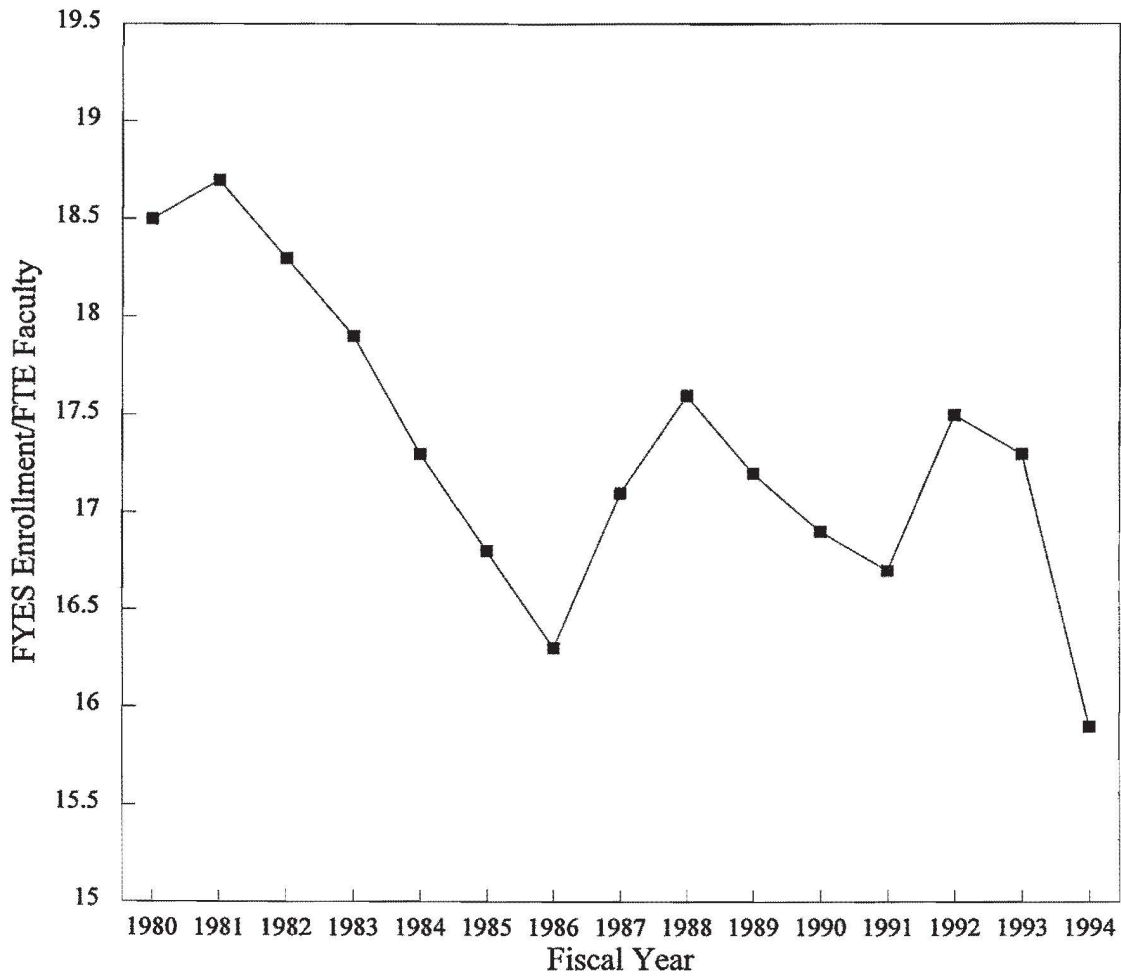


**TOTAL HEADCOUNT ENROLLMENT
FALL ENROLLMENT**

1965	5,787	1980	11,112
1966	6,801	1981	11,261
1967	7,581	1982	11,008
1968	8,200	1983	10,767
1969	8,439	1984	10,540
1970	9,057	1985	10,909
1971	9,161	1986	11,310
1972	8,864	1987	11,643
1973	8,584	1988	11,792
1974	9,264	1989	11,878
1975	9,460	1990	12,076
1976	9,934	1991	12,461
1977	9,965	1992	12,134
1978	10,208	1993	11,188
1979	10,596	1994	10,258

Source: Office of the Registrar

FERRIS STATE UNIVERSITY
FYES ENROLLMENT PER FTE FACULTY
1980 to 1994



Source: State of Michigan HEIDI Database, Budget Office

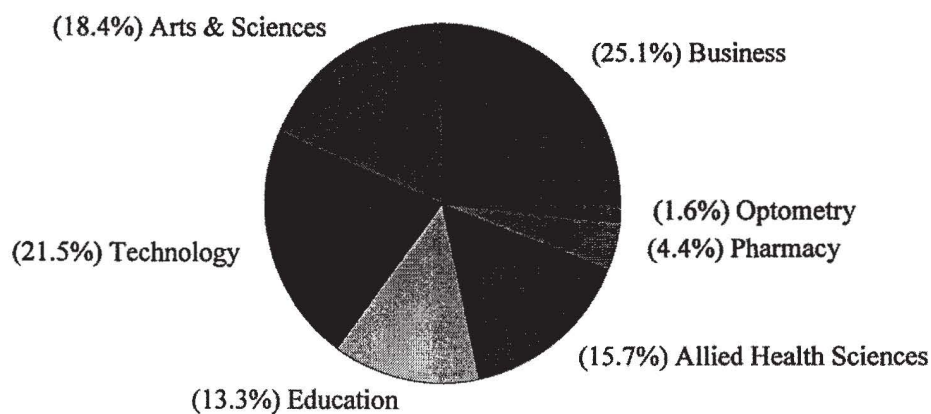
**FERRIS STATE UNIVERSITY
5-YEAR HEADCOUNT ENROLLMENT OVERVIEW BY COLLEGE
FALL TERM**

COLLEGE	1990-91	1991-92	1992-93	1993-94	1994-95
ALLIED HEALTH SCIENCES	1,082	1,302	1,495	1,514	1,610
ARTS & SCIENCES*	2,469	2,299	2,230	2,054	1,885
BUSINESS	4,336	4,384	3,864	3,151	2,579
EDUCATION	1,389	1,547	1,651	1,592	1,367
OPTOMETRY	169	174	187	186	167
PHARMACY	390	420	427	437	448
TECHNOLOGY	2,241	2,335	2,280	2,254	2,202
TOTAL	12,076	12,461	12,134	11,188	10,258

* During this time period, Arts and Sciences deliberately shifted significant numbers of students to Education (approximately 500), and Allied Health Sciences (approximately 400) through the creation of "Pre" programs.

Source: Fall Quarter/Semester Enrollment Report
Office of the Registrar
(90-91 thru 92-93 - Quarter System; 93-94 - Semester System)

**PERCENT OF STUDENTS BY COLLEGE
FALL SEMESTER 1994**



STUDENT ENROLLMENT BY COLLEGE

BUSINESS	2,579
ARTS & SCIENCES	1,885
TECHNOLOGY	2,202
EDUCATION	1,367
ALLIED HEALTH SCIENCE	1,610
PHARMACY	448
OPTOMETRY	167
TOTAL	10,258

Source: Fall Semester Enrollment Report
Office of the Registrar

COMPARATIVE ENROLLMENT REPORT BY COLLEGE

COLLEGE	MEN	WOMEN	1994 TOTAL	1993 TOTAL
BUSINESS	1,574	1,005	2,579	3,151
Masters Degree	43	27	70	54
Bachelor Degree	1,379	725	2,104	2,600
Associate Degree	135	232	367	424
Undeclared Major	15	20	35	73
Certificate	2	1	3	0
ARTS & SCIENCES	906	979	1,885	2,054
B.S. Degree	112	227	339	387
Associate Degree	694	631	1,325	1,511
Undeclared Major	100	121	221	156
TECHNOLOGY	2,020	182	2,202	2,254
B.S. Degree	816	67	883	815
Associate Degree	1,070	93	1,163	1,306
Undeclared Major	133	21	154	133
Certificate	1	1	2	0
EDUCATION	801	566	1,367	1,592
Masters Degree	19	22	41	74
B.S. Degree	436	269	705	861
Associate Degree	330	252	582	625
Undeclared Major	12	19	31	21
Non-degree Teacher Cert	4	4	8	11
ALLIED HEALTH SCIENCES	319	1,291	1,610	1,514
B.S. Degree	169	529	698	631
Associate Degree	150	750	900	871
Undeclared Major	0	12	12	12
PHARMACY	213	235	448	437
Pharm D Degree	6	9	15	15
B.S. Degree	207	226	433	422
OPTOMETRY	75	92	167	186
O.D. Degree	64	63	127	126
Associate Degree	11	29	40	60
TOTALS	5,908	4,350	10,258	11,188

Source: Fall Quarter Enrollment Report, Office of the Registrar
1993 Began Semester System

STUDENTS/ENROLLMENT

ENROLLMENT BY AGE UNDERGRADUATE STUDENTS - DEGREE SEEKING FALL 1994

AGE	FULL-TIME STUDENTS			PART-TIME STUDENTS		
	MALE	FEMALE	GRAND TOTAL	MALE	FEMALE	GRAND TOTAL
<18	4	3	7 0.09%			0 0.00%
18	545	483	1,028 12.91%	6	6	12 0.76%
19	827	555	1,382 17.35%	30	35	65 4.12%
20	753	520	1,273 15.98%	47	39	86 5.45%
21	723	502	1,225 15.38%	64	52	116 7.35%
22	620	348	968 12.15%	72	58	130 8.23%
23	456	202	658 8.26%	102	63	165 10.45%
24	251	106	357 4.48%	74	40	114 7.22%
25	149	71	220 2.76%	45	21	66 4.18%
26	100	56	156 1.96%	28	22	50 3.17%
27	51	43	94 1.18%	22	13	35 2.22%
28	40	28	68 0.85%	20	13	33 2.09%
29	36	31	67 0.84%	17	12	29 1.84%
30	29	29	58 0.73%	16	14	30 1.90%
31	25	18	43 0.54%	24	20	44 2.79%
32	20	18	38 0.48%	18	23	41 2.60%
33	14	21	35 0.44%	24	15	39 2.47%
34	21	14	35 0.44%	10	37	47 2.98%
35	23	24	47 0.59%	6	27	33 2.09%
36	16	20	36 0.45%	10	30	40 2.53%
37	6	10	16 0.20%	4	27	31 1.96%
38	4	14	18 0.23%	16	25	41 2.60%
39	9	12	21 0.26%	8	28	36 2.28%
40	6	14	20 0.25%	6	27	33 2.09%
41	5	8	13 0.16%	9	25	34 2.15%
42	5	11	16 0.20%	5	25	30 1.90%
43	14	4	18 0.23%	5	23	28 1.77%
44	6	6	12 0.15%	4	16	20 1.27%
45	3	4	7 0.09%	8	13	21 1.33%
46	3	4	7 0.09%	7	21	28 1.77%
47	1	3	4 0.05%	2	17	19 1.20%
48		1	1 0.01%	3	8	11 0.70%
49			0 0.00%	5	11	16 1.01%
50		3	3 0.04%	2	6	8 0.51%
51	2	2	4 0.05%	4	6	10 0.63%
52			0 0.00%		4	4 0.25%
53	1	2	3 0.04%	1	2	3 0.19%
54	1		1 0.01%	1	3	4 0.25%
55		1	1 0.01%		1	1 0.06%
56			0 0.00%			0 0.00%
57		1	1 0.01%			0 0.00%
58	1		1 0.01%			0 0.00%
59			0 0.00%			0 0.00%
60			0 0.00%			0 0.00%
61			0 0.00%		1	1 0.06%
62			0 0.00%			0 0.00%
63			0 0.00%			0 0.00%
64			0 0.00%			0 0.00%
>64		1	1 0.01%	1		1 0.06%
UNKNOWN	1	1	2 0.03%	15	9	24 1.52%
TOTAL	4,771	3,194	7,965 100.00%	741	838	1,579 100.00%

TOTAL FULL-TIME AND PART-TIME

	5,512	4,032	9,544
Average Age - Full-Time			22
Average Age - Part-Time			30
Average Age - Full-Time and Part-Time			23

STUDENTS/ENROLLMENT

ENROLLMENT BY AGE UNDERGRADUATE STUDENTS - NON-DEGREE SEEKING FALL 1994

AGE	FULL-TIME STUDENTS			PART-TIME STUDENTS		
	MALE	FEMALE	GRAND TOTAL	MALE	FEMALE	GRAND TOTAL
<18			0 0.00%	4	11	15 0.95%
18		1	1 0.01%	5	2	7 0.44%
19	3	4	7 0.09%	1	2	3 0.19%
20	4	4	8 0.10%	2	1	3 0.19%
21	2	4	6 0.08%		1	1 0.06%
22	3		3 0.04%	4	5	9 0.57%
23	3	1	4 0.05%	10	2	12 0.76%
24	3	3	6 0.08%	6	4	10 0.63%
25	1	1	2 0.03%	5	6	11 0.70%
26		1	1 0.01%	2	2	4 0.25%
27	4	1	5 0.06%	6	4	10 0.63%
28	1		1 0.01%	4	2	6 0.38%
29	1	2	3 0.04%	2	3	5 0.32%
30	1		1 0.01%	4	2	6 0.38%
31	1		1 0.01%	8	6	14 0.89%
32			0 0.00%	3	3	6 0.38%
33			0 0.00%	12	4	16 1.01%
34			0 0.00%	9	5	14 0.89%
35		1	1 0.01%	11	4	15 0.95%
36			0 0.00%	9	7	16 1.01%
37			0 0.00%	5	6	11 0.70%
38		1	1 0.01%	6	3	9 0.57%
39			0 0.00%	11	2	13 0.82%
40			0 0.00%	16	3	19 1.20%
41	1	1	2 0.03%	9	8	17 1.08%
42			0 0.00%	8	7	15 0.95%
43			0 0.00%	5	5	10 0.63%
44			0 0.00%	3	8	11 0.70%
45			0 0.00%	2	3	5 0.32%
46		1	1 0.01%	6	6	12 0.76%
47			0 0.00%	1	4	5 0.32%
48			0 0.00%	4	4	8 0.51%
49			0 0.00%	6		6 0.38%
50			0 0.00%	3	3	6 0.38%
51			0 0.00%	2	2	4 0.25%
52			0 0.00%	2	1	3 0.19%
53			0 0.00%	2	1	3 0.19%
54			0 0.00%	1		1 0.06%
55			0 0.00%	3	1	4 0.25%
56			0 0.00%		1	1 0.06%
57			0 0.00%	1	2	3 0.19%
58			0 0.00%	1	1	2 0.13%
59			0 0.00%	3	1	4 0.25%
60			0 0.00%	1		1 0.06%
61			0 0.00%			0 0.00%
62			0 0.00%		2	2 0.13%
63			0 0.00%			0 0.00%
64			0 0.00%			0 0.00%
>64			0 0.00%		2	2 0.13%
UNKNOWN			0 0.00%	22	11	33 2.09%
TOTAL	28	26	54 100.00%	230	163	393 100.00%
TOTAL FULL-TIME AND PART-TIME				258	189	447
				Average Age - Full-Time		25
				Average Age - Part-Time		36
				Average Age - Full-Time and Part-Time		35

STUDENTS/ENROLLMENT

ENROLLMENT BY AGE GRADUATE STUDENTS FALL 1994

AGE	FULL-TIME STUDENTS			PART-TIME STUDENTS		
	MALE	FEMALE	GRAND TOTAL	MALE	FEMALE	GRAND TOTAL
<18			0 0.00%			0 0.00%
18			0 0.00%			0 0.00%
19			0 0.00%			0 0.00%
20			0 0.00%			0 0.00%
21			0 0.00%			0 0.00%
22			0 0.00%		1	1 0.83%
23			0 0.00%	4	1	5 4.13%
24			0 0.00%	1	1	2 1.65%
25			0 0.00%	3	3	6 4.96%
26			0 0.00%	2	2	4 3.31%
27			0 0.00%	4	4	8 6.61%
28			0 0.00%	2	2	4 3.31%
29			0 0.00%		3	3 2.48%
30			0 0.00%	5		5 4.13%
31	1		1 25.00%	2		2 1.65%
32			0 0.00%	4	1	5 4.13%
33			0 0.00%	2	1	3 2.48%
34	1		1 25.00%	2		2 1.65%
35			0 0.00%	3	1	4 3.31%
36			0 0.00%	2	2	4 3.31%
37			0 0.00%		5	5 4.13%
38			0 0.00%	3	2	5 4.13%
39			0 0.00%	2	4	6 4.96%
40	1		1 25.00%	3	4	7 5.79%
41			0 0.00%	3	1	4 3.31%
42			0 0.00%	1	5	6 4.96%
43			0 0.00%		3	3 2.48%
44			0 0.00%	1	2	3 2.48%
45			0 0.00%	2		2 1.65%
46			0 0.00%	2		2 1.65%
47		1	1 25.00%	3	2	5 4.13%
48			0 0.00%	1	2	3 2.48%
49			0 0.00%		1	1 0.83%
50			0 0.00%	3		3 2.48%
51			0 0.00%		1	1 0.83%
52			0 0.00%	1		1 0.83%
53			0 0.00%			0 0.00%
54			0 0.00%			0 0.00%
55			0 0.00%	1		1 0.83%
56			0 0.00%			0 0.00%
57			0 0.00%	1		1 0.83%
58			0 0.00%			0 0.00%
59			0 0.00%			0 0.00%
60			0 0.00%			0 0.00%
61			0 0.00%		1	1 0.83%
62			0 0.00%			0 0.00%
63			0 0.00%			0 0.00%
64			0 0.00%			0 0.00%
>64			0 0.00%			0 0.00%
UNKNOWN			0 0.00%	1	2	3 2.48%
TOTAL	3	1	4 100.00%	64	57	121 100.00%
TOTAL FULL-TIME AND PART-TIME				67	58	125
				Average Age - Full-Time		38
				Average Age - Part-Time		36
				Average Age - Full-Time and Part-Time		36

STUDENTS/ENROLLMENT

ENROLLMENT BY AGE FIRST PROFESSIONAL STUDENTS FALL 1994

AGE	FULL-TIME STUDENTS			PART-TIME STUDENTS		
	MALE	FEMALE	GRAND TOTAL	MALE	FEMALE	GRAND TOTAL
<18			0 0.00%			0 0.00%
18			0 0.00%			0 0.00%
19		1	1 0.72%			0 0.00%
20			0 0.00%			0 0.00%
21	2	6	8 5.80%			0 0.00%
22	8	8	16 11.59%			0 0.00%
23	8	20	28 20.29%			0 0.00%
24	18	17	35 25.36%			0 0.00%
25	11	6	17 12.32%			0 0.00%
26	4	3	7 5.07%			0 0.00%
27	1	3	4 2.90%			0 0.00%
28	3	1	4 2.90%			0 0.00%
29	2		2 1.45%			0 0.00%
30	2	1	3 2.17%	1		1 0.72%
31	1	1	2 1.45%			0 0.00%
32	3	3	6 4.35%	1		1 0.72%
33	2		2 1.45%			0 0.00%
34		1	1 0.72%			0 0.00%
35	1		1 0.72%			0 0.00%
36	1		1 0.72%			0 0.00%
37			0 0.00%		1	1 0.72%
38			0 0.00%			0 0.00%
39			0 0.00%			0 0.00%
40			0 0.00%			0 0.00%
41			0 0.00%			0 0.00%
42			0 0.00%			0 0.00%
43			0 0.00%	1		1 0.72%
44			0 0.00%			0 0.00%
45			0 0.00%			0 0.00%
46			0 0.00%			0 0.00%
47			0 0.00%			0 0.00%
48			0 0.00%			0 0.00%
49			0 0.00%			0 0.00%
50			0 0.00%			0 0.00%
51			0 0.00%			0 0.00%
52			0 0.00%			0 0.00%
53			0 0.00%			0 0.00%
54			0 0.00%			0 0.00%
55			0 0.00%			0 0.00%
56			0 0.00%			0 0.00%
57			0 0.00%			0 0.00%
58			0 0.00%			0 0.00%
59			0 0.00%			0 0.00%
60			0 0.00%			0 0.00%
61			0 0.00%			0 0.00%
62			0 0.00%			0 0.00%
63			0 0.00%			0 0.00%
64			0 0.00%			0 0.00%
>64			0 0.00%			0 0.00%
UNKNOWN			0 0.00%			0 0.00%
TOTAL	67	71	138 100.00%	3	1	4

TOTAL FULL-TIME AND PART-TIME

70 72 142

Average Age - Full-Time 25

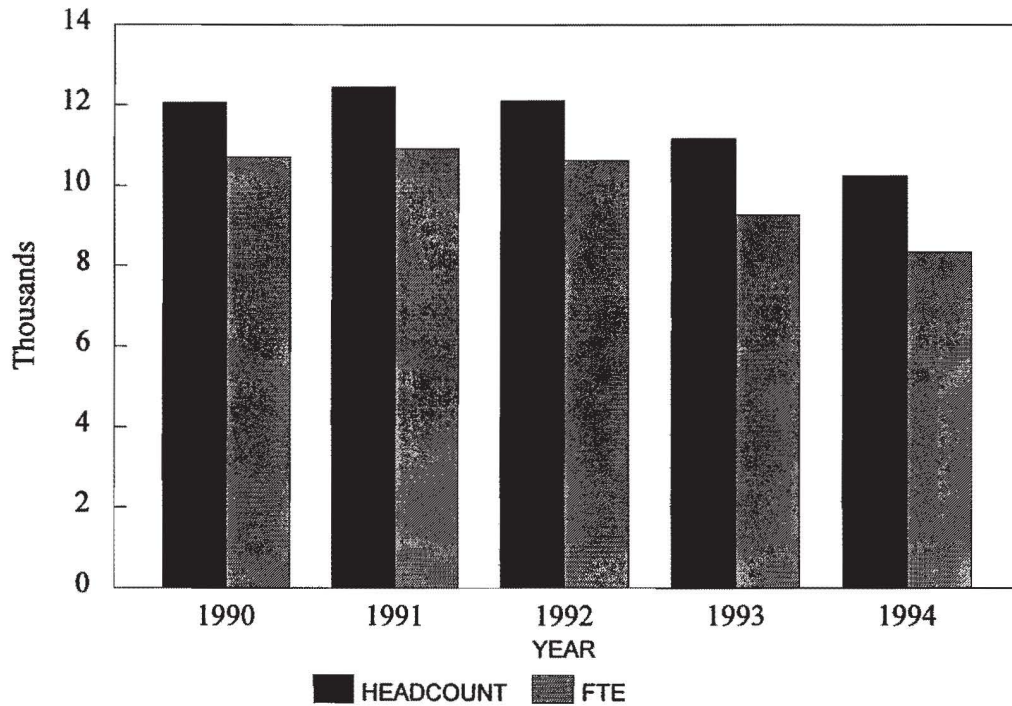
Average Age - Part-Time 36

Average Age - Full-Time and Part-Time 25

Source: SIS+ Download Fall 1994
IPEDS 94\FALLB

STUDENTS/ENROLLMENT

TOTAL FALL HEADCOUNT ENROLLMENT COMPARED TO FTE



FALL TERM	HEADCOUNT	FTE
1990	12,076	10,704
1991	12,461	10,922
1992	12,134	10,626
1993	11,188	9,294
1994	10,258	8,356

NOTE: FTE - Full-Time Equated Student, i.e., 2 Half-Time Students = 1 FTE
 FTE is calculated using Presidents Council definition.

Source: Office of Institutional Studies, Presidents Council Reports, 10/94

SCH/FTE/FYES

Student Credit Hours Produced By Student Level

Fall Term	Undergrad	Graduate	1st Prof	Total
1990	162,925.0	745.0	1,000.0	164,670.0
1991	166,593.0	509.0	1,990.5	169,092.5
1992	161,801.0	634.0	2,020.0	164,455.0
1993	141,069.0	611.0	2,624.0	144,304.0
1994	126,567.5	576.0	2,653.0	129,796.5

Full-Time Equated Student (FTE) By Student Level

Fall Term	Undergrad	Graduate	1st Prof	Total
1990	10,512	62	130	10,704
1991	10,747	42	133	10,922
1992	10,439	53	134	10,626
1993	9,102	51	141	9,294
1994	8,166	48	142	8,356

NOTE: FTE is calculated using Presidents Council definitions.

Source: Office of Institutional Studies, Presidents Council Reports, 10/94

Full-Year Equated Student (FYES)

Academic Year	FYES
90/91	11,076
91/92	11,310
92/93	10,917
93/94	9,868
94/95	9,011 (ESTIMATE)

Source: HEIDI, Appendix A

NOTE: 1993-94 changed to semester system

STUDENTS/ENROLLMENT

ETHNIC DISTRIBUTION: TOTAL UNIVERSITY ENROLLMENT FALL 1994 COMPARED WITH FALL 1993

	1994 TOTAL	1993 TOTAL	CHANGES
AMERICAN INDIAN/NATIVE ALASKAN	99	99	0
ASIAN OR PACIFIC ISLANDER	140	118	22
BLACK	1,072	1,056	16
FOREIGN	178	267	(89)
HISPANIC	130	120	10
WHITE	8,422	9,396	(974)
UNREPORTED	217	132	85
TOTAL	10,258	11,188	(930)

The following definitions are used in determining racial/ethnic designations:

American Indian or Alaskan Native: A person having origins in any of the original peoples of North America.

Asian or Pacific Islander: A person having origins in any of the original peoples of the Far East, Southeast Asia, the Indian Subcontinent, or the Pacific Islands.

Black (not of Hispanic Origin): A person having origins in any of the black racial groups of Africa.

Foreign: A person who is not a citizen of the United States, and who is in this country on a temporary basis and does not have a right to remain indefinitely.

Hispanic: A person of Mexican, Puerto Rican, Cuban, Central or South American or other Spanish culture or origin.

White (not of Hispanic origin): A person having origins in any of the original peoples of Europe, North Africa, or the Middle East.

Source: Fall Semester Enrollment Report, Office of the Registrar

STUDENTS/ENROLLMENT

ENROLLMENT BY PROGRAM FALL TERM

COLLEGE	1989/90	1990/91	1991/92	1992/93	1993/94	1994/95
ALLIED HEALTH SCIENCES						
ALLIED DENTAL						
Dental Assisting	28	25	14	2	0	0
Dental Hygiene	106	113	114	123	107	101
Dental Technology	48	42	31	29	40	40
DEPARTMENT TOTAL	182	180	159	154	147	141
ENVIRONMENTAL AND CLINICAL SCIENCE						
Industrial & Env Health Mgt	90	118	133	157	136	115
Medical Technology	50	49	54	51	52	73
Medical Lab Technology	19	29	17	12	14	25
DEPARTMENT TOTAL	159	196	204	220	202	213
HOSPITAL RELATED						
Nuclear Med 2-Yr	39	40	38	44	49	36
Nuclear Med 4-Yr	15	22	25	21	13	27
Radiography	86	110	109	141	121	111
Respiratory Care	24	24	25	47	48	46
DEPARTMENT TOTAL	164	196	197	253	231	220
NURSING						
Nursing 2-Yr	56	63	84	109	66	91
Nursing 4-Yr	13	13	6	10	4	1
Total	69	76	90	119	70	92
OFF-CAMPUS						
Nursing 4-Yr	145	147	147	165	226	289
Off-Campus Total	145	147	147	165	226	289
DEPARTMENT TOTAL	214	223	237	284	296	381
PRE-ALLIED HEALTH						
Pre-Dental Hygiene*	0	0	70	59	58	79
Pre-Dental Tech	0	0	0	0	0	0
Pre-Health Info Mgt	0	0	0	0	6	9
Pre-Health Info Tech	0	0	0	4	11	14
Pre-Health Systems	0	0	0	1	1	0
Pre-Industrial & Env Health*	0	0	7	5	2	1
Pre-Med Lab Tech 2-Yr*	0	0	6	7	12	12
Pre-Medical Tech*	0	0	7	12	9	9
Pre-Med Records T*	0	0	3	0	0	0
Pre-Nuclear Med 2-Yr*	0	0	4	8	30	32
Pre-Nuclear Med 4-Yr*	0	0	0	0	0	5
Pre-Nursing 2-Yr*	0	0	85	125	138	137
Pre-Radiography*	0	0	19	26	78	75
Pre-Respiratory Care*	0	0	3	12	25	34
DEPARTMENT TOTAL	0	0	204	259	370	407

STUDENTS/ENROLLMENT

COLLEGE	1989/90	1990/91	1991/92	1992/93	1993/94	1994/95
ALLIED HEALTH SCIENCES						
HEALTH MANAGEMENT						
Health Care Systems Admin	0	0	0	0	0	38
Health Info Tech 2-Yr	0	0	0	72	46	56
Health Info Mgt 4-Yr	0	0	0	53	55	43
Health Systems Mgt	50	50	48	68	74	44
Health Systems	0	1	0	0	0	0
Medical Records Tech	55	50	63	0	0	0
BS Medical Records	64	65	54	0	0	0
DEPARTMENT TOTAL	169	166	165	193	175	181
OFF-CAMPUS						
Undeclared	34	43	57	49	12	12
EXD Environmental Health	0	0	1	2	0	0
EXD Health Systems Mgt	25	23	34	55	68	0
EXD Undeclared	1	1	0	2	0	0
Health Care Systems Admin	0	0	0	0	0	28
Health Info Tech 2-Yr	0	0	0	0	10	11
Health Info Mgt 4-Yr	0	0	0	0	3	12
Health Systems Mgt	0	0	0	0	0	4
Medical Records Tech	0	20	28	12	0	0
BS Medical Records Adm	20	34	16	12	0	0
Off-Campus Total	80	121	136	132	93	67
ON-CAMPUS TOTAL	743	814	1,019	1,198	1,195	1,254
OFF-CAMPUS TOTAL	225	268	283	297	319	356
COLLEGE TOTAL	968	1,082	1,302	1,495	1,514	1,610

*Students are lacking prerequisite courses or have a low GPA in certain areas.

STUDENTS/ENROLLMENT

ENROLLMENT BY PROGRAM
FALL TERM

COLLEGE	1989/90	1990/91	1991/92	1992/93	1993/94	1994/95
ARTS & SCIENCES						
Evening College	207	170	132	110	98	155
Fast Track	0	0	0	0	0	19
Undeclared	0	0	0	0	1	0
Total	207	170	132	110	99	174
BIOLOGY						
Ornamental Hort 2-Yr	28	34	41	31	27	39
Applied Biology 4-Yr	89	107	117	98	106	92
Biotechnology	8	7	9	14	19	24
DEPARTMENT TOTAL	125	148	167	143	152	155
PHYSICAL SCIENCES						
Industrial Chemical Tech	22	20	20	25	18	13
DEPARTMENT TOTAL	22	20	20	25	18	13
MATHEMATICS						
Actuarial Science - Math	0	0	3	7	6	5
Applied Math	22	21	15	9	10	9
DEPARTMENT TOTAL	22	21	18	16	16	14
LANGUAGES & LITERATURE						
Journalism Associate	73	76	51	49	45	29
Technical Communications	16	12	13	13	20	21
DEPARTMENT TOTAL	89	88	64	62	65	50
SOCIAL SCIENCES						
BS Social Work	267	274	211	224	226	188
DEPARTMENT TOTAL	267	274	211	224	226	188
STUDENT DEVELOPMENT SERVICES						
Collegiate Skills	0	0	0	0	259	179
Directed Studies	0	0	0	0	322	273
Intensive English Program	50	67	68	98	57	47
General Studies	494	535	581	603	1	0
DEPARTMENT TOTAL	544	602	649	701	639	499
PRE-PROF NON-SCIENCES						
Pre-Arts/Liberal Arts**	250	252	413	296	269	255
Pre-Law	72	68	74	66	44	46
Pre-Teaching Elementary*	100	85	0	0	0	0
Pre-Teaching Secondary*	56	58	0	0	0	0
DEPARTMENT TOTAL	478	463	487	362	313	301

STUDENTS/ENROLLMENT

COLLEGE	1989/90	1990/91	1991/92	1992/93	1993/94	1994/95
ARTS & SCIENCES						
PRE-PROF SCIENCE						
Pre-Science	121	144	38	26	114	119
Pre-Dentistry	29	32	20	19	12	6
Pre-Engineering	54	45	40	30	10	8
Pre-Medicine	49	49	38	44	28	20
Pre-Mortuary Science	15	10	13	11	12	14
Pre-Veterinary Science	14	17	22	23	11	15
Pre-Optometry	130	120	114	131	88	70
Pre-Pharmacy	305	266	266	303	251	239
DEPARTMENT TOTAL	717	683	551	587	526	491
COLLEGE TOTAL	2,471	2,469	2,299	2,230	2,054	1,885

*Moved to College of Education 1991/92

**Pre-Arts changed to Liberal Arts 1992/93

STUDENTS/ENROLLMENT

ENROLLMENT BY PROGRAM
FALL TERM

COLLEGE	1989/90	1990/91	1991/92	1992/93	1993/94	1994/95
BUSINESS						
ACCOUNTANCY						
Master/Accountancy	10	7	9	8	3	0
Accountancy 4-Yr	311	319	335	253	180	138
Accountancy CIS 4-Yr	0	0	0	0	18	27
Accountancy Finance 4-Yr	54	56	54	47	28	15
Accountancy Transfer	24	26	30	28	26	20
Total	399	408	428	336	255	200
OFF-CAMPUS						
Accountancy 4-Yr	41	28	13	9	4	2
Accountancy Transfer	0	8	22	33	34	39
Undeclared	48	46	50	46	73	35
Off-Campus Total	89	82	85	88	111	76
DEPARTMENT TOTAL	488	490	513	424	366	276
MANAGEMENT						
Business Administration	609	592	554	468	368	258
Business Admin Transfer	73	68	71	75	48	28
Business Economics	13	16	15	4	0	0
Bus Economics Transfer	2	1	0	0	0	0
Finance 4-Yr	53	62	77	67	47	37
Finance Transfer	14	15	6	5	6	4
General Business	0	0	0	0	12	83
Human Resource Managemen	0	0	0	0	11	16
Human Res Mgt Transfer	0	0	0	0	1	2
Insurance 4-Yr	35	32	34	37	16	13
Insurance/Real Estate 4-Yr	27	37	30	21	20	15
Insurance Transfer	5	3	8	7	0	0
International Business	41	49	60	72	57	52
International Bus Transfer	3	2	6	6	5	4
Legal Assistant	65	88	96	79	62	33
Management	252	249	234	180	120	88
Mgt Transfer	27	23	26	26	19	8
Operations Management	0	0	0	0	8	12
Operations Mgt Transfer	0	0	0	0	2	6
Personnel Mgt/Ind Relations	25	31	40	40	16	4
Per Mgt/Ind Rel Transfer	8	8	7	6	6	1
Production Mgt 4-Yr	26	23	28	13	4	1
Production Mgt Transfer	31	23	14	13	3	1
Quantitative Business	6	4	5	6	4	2
Qnt Business Transfer	2	1	0	2	0	0
Real Estate 2-Yr	21	29	13	22	17	11
Small Business Mgt	62	57	58	61	39	27
Small Bus Mgt Transfer	14	12	23	19	11	11
Total	1,414	1,425	1,405	1,229	902	717
OFF-CAMPUS						
Business Administration	150	65	48	25	16	1
Bus Admin Transfer	0	65	118	141	128	131
International Business	0	0	0	0	0	2
Off-Campus Total	150	130	166	166	144	134
DEPARTMENT TOTAL	1,564	1,555	1,571	1,395	1,046	851
DIVERSIFIED BUSINESS						
Accelerated Business	2	1	0	0	0	0
Diversified Business	63	60	33	28	13	5
DEPARTMENT TOTAL	65	61	33	28	13	5

STUDENTS/ENROLLMENT

COLLEGE	1989/90	1990/91	1991/92	1992/93	1993/94	1994/95
EDUCATION						
CHILD DEVELOPMENT						
Child Development	57	97	77	89	74	68
DEPARTMENT TOTAL	57	97	77	89	74	68
CRIMINAL JUSTICE						
Criminal Justice	544	596	672	498	369	284
Pre-Criminal Justice AA	0	0	0	0	15	368
Pre-Criminal Justice AAS	0	0	0	309	397	5
Criminal Justice Specialist	0	0	2	2	0	0
DEPARTMENT TOTAL	544	596	674	809	781	657
ON-CAMPUS TOTAL	1,160	1,274	1,435	1,532	1,465	1,271
OFF-CAMPUS TOTAL	95	115	112	119	127	96
COLLEGE TOTAL	1,255	1,389	1,547	1,651	1,592	1,367

**ENROLLMENT BY PROGRAM
FALL TERM**

COLLEGE	1989/90	1990/91	1991/92	1992/93	1993/94	1994/95
OPTOMETRY						
PROFESSIONAL						
O.D. Optometry	125	124	121	123	126	127
DEPARTMENT TOTAL	125	124	121	123	126	127
TECHNICAL						
Optometric Tech	25	21	23	19	23	18
Opticianry	30	24	30	45	37	22
Undeclared	117	0	0	0	0	0
DEPARTMENT TOTAL	172	45	53	64	60	40
COLLEGE TOTAL	297	169	174	187	186	167

COLLEGE	1989/90	1990/91	1991/92	1992/93	1993/94	1994/95
PHARMACY						
BS PHARMACY						
BS Pharmacy	380	384	408	416	422	433
DEPARTMENT TOTAL	380	384	408	416	422	433
PHARMACY D						
Pharm D Add ON	0	6	12	4	6	10
Pharm D Track IN	0	0	0	7	9	5
Pharmacy D	0	0	0	11	0	0
DEPARTMENT TOTAL	0	6	12	22	15	15
COLLEGE TOTAL	380	390	420	438	437	448

Degrees

DEGREES/PROGRAMS

	1990-91			1991-92			1992-93			1993-94*		
	AS	BS	MS	AS	BS	MS	AS	BS	MS	AS	BS	MS
ALLIED HEALTH SCI												
HEALTH SYSTEMS MGT												
Environmental Health Tech		3										
Ind & Env Hlth Haz Waste								3				
Ind & Env Hlth Ind Hyg								1				
Ind & Env Hlth Safety								<u>2</u>				
TOTAL		3						6				
HOSPITAL RELATED												
Nuclear Med Tech (2)	17	12		14	11		18	13		15	5	
Radiography(2)	35			46			47			50		
Respiratory Care (2)	<u>8</u>			<u>13</u>			<u>11</u>			<u>24</u>		
TOTAL	60	12		73	11		76	13		89	5	
NURSING												
Nursing/Off Campus											58	
Nursing	<u>14</u>	<u>32</u>		<u>34</u>	<u>47</u>		<u>42</u>	<u>42</u>		<u>33</u>	<u>2</u>	
TOTAL	14	32		34	47		42	42		33	60	
COLLEGE TOTAL	184	150		226	155		248	183		233	162	

*Changed to Semester System Fall 1993

(1) Prior to semesters, program was in the Health Systems Management Department

(2) Prior to semesters, program was in the Hospital Related Department

**Medical Record Tech changed to Health Info Tech 1992-93

***Medical Record Adm changed to Health Info Mgt 1992-93

DEGREES CONFERRED BY PROGRAM

ACADEMIC YEAR (SUMMER QUARTER/SEMESTER--SPRING QUARTER/SEMESTER)

	1990-91			1991-92			1992-93			1993-94*		
	AS	BS	MS	AS	BS	MS	AS	BS	MS	AS	BS	MS
ARTS & SCIENCES												
BIOLOGICAL SCIENCES												
Applied Biology		25			33			34			22	
Biotechnology		3			1			4			7	
Ornamental Horticulture	7			14			8			15		
TOTAL	7	28		14	34		8	38		15	29	
GENERAL STUDIES												
Liberal Arts							46			42		
Pre-Arts	51			51			5					
Pre-Dentistry	2			1			1			1		
Pre-Engineering	4			1						2		
Pre-Law	6			8			13			10		
Pre-Medicine	4			1			7			1		
Pre-Mort Science	4			1			3			1		
Pre-Optometry	7			13			10			7		
Pre-Pharmacy	29			31			49			20		
Pre-Science	5			10			9			7		
Pre-Teach (Elementary)**	10			1								
Pre-Teach (Secondary)**	10											
Pre-Veterinary				1						3		
TOTAL	132			119			143			94		
LANG & LIT												
Journalism	10			12			20			8		
Technical Communication		4			4			6			3	
TOTAL	10	4		12	4		20	6		8	3	

DEGREES/PROGRAMS

	1990-91			1991-92			1992-93			1993-94*		
	AS	BS	MS	AS	BS	MS	AS	BS	MS	AS	BS	MS
ARTS & SCIENCES												
MATHEMATICS												
Actuarial Sci Math								2				3
Applied Math		<u>3</u>			<u>7</u>			<u>5</u>				<u>3</u>
TOTAL		3			7			7				6
PHYSICAL SCIENCES												
Industrial Chem Tech	<u>14</u>			<u>16</u>			<u>18</u>				<u>15</u>	
TOTAL	14			16			18				15	
SOCIAL SCIENCES												
Social Services Tech.		1			2						2	
Social Work		<u>57</u>			<u>58</u>			<u>70</u>			<u>38</u>	
TOTAL		58			60			70			2	38
STUDENT DEV SERV												
Directed Studies											2	
General Studies	<u>4</u>			<u>10</u>			<u>6</u>			<u>2</u>		
TOTAL	4			10			6			4		
COLLEGE TOTAL	167	93		171	105		195	121		138	76	

*Changed to semester system Fall 1993

**Pre-Teach Elementary & Secondary moved to College of Education in Fall, 1991

DEGREES CONFERRED BY PROGRAM

ACADEMIC YEAR (SUMMER QUARTER/SEMESTER—SPRING QUARTER/SEMESTER)

	1990-91			1991-92			1992-93			1993-94*		
	AS	BS	MS	AS	BS	MS	AS	BS	MS	AS	BS	MS
BUSINESS												
ACCOUNTANCY												
Accountancy		71			65			71				76
Accountancy/Finance												6
Accountancy/Masters			5			5			3			4
TOTAL		71	5		65	5		71	3			82
COMPUTER INFO SYS												
Admin Assistant (1)	14			15			24				13	
Computer Info Systems		54			73			52			54	9
CIS/Accountancy											6	
CIS/M											9	
Crt/Freelance Reprtng (1)	13			15			17				6	
Executive Secretary (1)	6			10			8				3	
Info Systems Management			3			5			6			1
Legal Secretary (1)	4			3			6				4	
Office Automation Sys (1)		9			3			6				11
TOTAL	37	63	3	43	76	5	55	58	6		26	80
MANAGEMENT												
Business Administration		204			210			220				206
Business Economics		2			3			1				
Diversified Business	26			27			9				16	
Finance		28			31			35				23
Insurance		20			19			30				13
Insurance/Real Estate		5			7			4				3
International Business		9			9			20				16
Legal Assistant	20			25			26				28	
Management		55			62			51				39
Personnel Mgt/Ind Rel		16			15			20				16
Production Management		25			17			20				8
Quantitative Business		3			3			4				2
Real Estate	16			8			14				5	
Small Business Mgt		13			12			18				19
TOTAL	62	380		60	388		49	423			49	345
Real Estate (Certificate)	7			11			6				8	

DEGREES/PROGRAMS

	1990-91			1991-92			1992-93			1993-94*		
	AS	BS	MS	AS	BS	MS	AS	BS	MS	AS	BS	MS
BUSINESS												
MARKETING												
Advertising		54			60			56			35	
Advertising/Public Relations												
Food Service Mgt	56			50			67			36		
Hospitality Management		26			40			47			38	
Marketing		44			64			43			41	
Marketing/PGM		66			55			72			63	
Marketing/PTM		4			9			7			18	
Marketing/Retail		23			18			18			14	
Marketing/Sales		53			51			52			36	
Public Relations		12			7			18			14	
Retail Fash Merch	24			16			14			14		
Retailing											1	
Visual Communication	<u>20</u>	<u>17</u>		<u>37</u>	<u>4</u>		<u>26</u>	<u>3</u>		<u>21</u>	<u>20</u>	
TOTAL	100	299		103	308		107	316		71	280	
COLLEGE TOTAL	199	813	8	206	837	10	211	868	9	146	787	14

CERTIFICATES

Real Estate	7	11	6	8
-------------	---	----	---	---

*Changed to semester system Fall 1993

(1) Prior to semesters, program was in the Office Administration Department

DEGREES CONFERRED BY PROGRAM

ACADEMIC YEAR (SUMMER QUARTER/SEMESTER--SPRING QUARTER/SEMESTER)

	1990-91			1991-92			1992-93			1993-94*		
	AS	BS	MS	AS	BS	MS	AS	BS	MS	AS	BS	MS
EDUCATION												
CHILD DEVELOPMENT												
Child Development	40			34			41			19		
TOTAL	40			34			41			19		
CRIMINAL JUSTICE												
Pre-Arts Criminal Justice				8			28			43		
Criminal Justice		95			141			143			181	
TOTAL		95		8	141		28	143		43	181	
LEISURE STUDIES & WELLNESS												
Rec Leadership & Mgt		16			20			19			27	
TOTAL		16			20			19			27	
OCCUPATIONAL EDUCATION (1)												
Allied Health Education		10			9			10			6	
Allied Health Educ/Off Camp											2	
Biology Education								11			5	
Business Education		25			18			18			12	
Business Education/Gen Bus											2	
Business Educ/Off Campus											1	
Career & Technical Educ												9
Chemistry Education								4				
Mathematics Education		5			7			12			10	
Mathematics Educ/Off Campus											1	
Occupational Education			23			26				29		2
Occ Education/Off Campus												2
Pre-Teach Elementary**				6			6			6		
Pre-Teach Secondary**				3			3			2		
Science Education		15			10							
Technical Education		23			30			19			10	
Technical Educ/Off Campus											8	
Training Bus & Industry					2			3			2	
Wage Earn Home Econ		1			3			3			4	
TOTAL		79	23	9	79	26	9	80	29	8	63	13

DEGREES/PROGRAMS

	1990-91			1991-92			1992-93			1993-94*		
	AS	BS	MS	AS	BS	MS	AS	BS	MS	AS	BS	MS
EDUCATION												
TELEVISION PROD												
Audio Visual Production	23			12			1			3		
TV Production	—	37		—	33		—	23		—	17	
TOTAL	23	37		12	33		1	23		3	17	
COLLEGE TOTAL	63	227	23	63	273	26	79	265	29	73	288	13

*Changed to semester system Fall 1993

(1) Formerly Teacher Education

**Pre-Teach Elementary & Secondary moved to College of Education in Fall 1991

DEGREES CONFERRED BY PROGRAM

ACADEMIC YEAR (SUMMER QUARTER/SEMESTER--SPRING QUARTER/SEMESTER)

	1990-91			1991-92			1992-93			1993-94*		
	AS	BS	OD	AS	BS	OD	AS	BS	OD	AS	BS	OD
OPTOMETRY												
Opticianry	9			1			11			11		
Optometric Tech	12			7			5			9		
Optometry			33			30			30			31
Vision Science		30			22			25			37	
COLLEGE TOTAL	21	30	33	8	22	30	16	25	30	20	37	31

DEGREES CONFERRED BY PROGRAM

ACADEMIC YEAR (SUMMER QUARTER/SEMESTER--SPRING QUARTER/SEMESTER)

	1990-91			1991-92			1992-93			1993-94*		
	AS	BS	Pharm D	AS	BS	Pharm D	AS	BS	Pharm D	AS	BS	Phar D
PHARMACY												
Pharmacy		104			108	6		138	5		120	
Pharmacy/Doctorate/Add-on												1
Pharmacy/Doctorate/Track-in												4
COLLEGE TOTAL		104	0		108	6		138	5		120	5

*Changed to semester system Fall 1993

DEGREES CONFERRED BY PROGRAM

ACADEMIC YEAR (SUMMER QUARTER/SEMESTER--SPRING QUARTER/SEMESTER)

	1990-91			1991-92			1992-93			1993-94*		
	AS	BS	MS	AS	BS	MS	AS	BS	MS	AS	BS	MS
TECHNOLOGY												
AUTOMOTIVE												
Automotive Body	23			24			16			14		
Auto & Heavy Equip Mgt		53			56			73			56	
Auto Machine Tech	8			17			10			2		
Auto Service Tech	64			74			58			53		
Heavy Duty Eng Tech	1			2			6					
Heavy Equipment Serv											4	
Heavy Equipment Tech	26			30			43			22		
TOTAL	122	53		147	56		133	73		91	60	
Auto Mach Tech (Cert)				1								
CONSTRUCTION												
Aerial Mapping Tech	2			1								
Architectural Tech	45			36			38			27		
Building Const Tech	26			35			49			18		
Civil Eng Tech										7		
Construction Eng Tech	4			13			13					
Construction Management		13			29			34			4	
Construction Mgt/Off Campus											1	
Construction Mgt/Transfer											34	
Energy Management		1										
Facilities Management		7			11			12			13	
HVACR Eng Tech		16			13			16			14	
HVACR Technology	42			27			34			33		
Surveying Engineering		12			22			15			18	
Surveying Tech	1			3			5			6		
TOTAL	120	49		115	75		139	77		91	84	
ELECT/ELECTRONICS												
Avionics Tech	1											
Broadcast Elect Tech		1										
Electrical Power Tech												
Elect/Electronics Eng Tech											2	
Electrical/Electronics Eng		20			20			15			23	
Industrial Elect Tech	32			24			24			18		
Radio & TV Serv				1								
TOTAL	33	21		25	20		24	15		18	25	

DEGREES/PROGRAMS

	1990-91			1991-92			1992-93			1993-94*		
	AS	BS	MS	AS	BS	MS	AS	BS	MS	AS	BS	MS
TECHNOLOGY												
COMP AIDED DESIGN												
Cosmetology							1					
TOTAL							1					
GRAPHIC ARTS												
Printing Management		19			29			21				18
Printing Tech	54			50			54			36		
TOTAL	54	19		50	29		54	21		36	18	
Graphic Reprod (Cert)		1										
MANUFACTURING ENGIN TECH												
Comp Numerical Control		1										
Mach Tool Technology		1										
Manufacturing Eng Tech		29			25			23				33
Manufacturing Tech		2			4							1
Manufacturing Tech/Off C												1
Mfg Tooling Tech	21			20			28			19		
Mech Eng Technology	8			6			17			12		
Plastics Engineering Tech		42			52			49				60
Plastics Technology	44			47			79			49		
Product Design Eng Tech		14			19			31				17
Tech Draft/Tool Design	34			37			44			28		
Technical Illustration	18			15			6			11		
Welding Eng Technology		16			10			9				20
Welding Technology	17			20			21			10		
TOTAL	144	103		145	110		195	112		129	132	
Mfg Tooling Tech (Cert)		1					1					
Welding Tech (Cert)				1								
COLLEGE TOTAL	473	245		482	290		546	298		365	319	

NOTE: Industrial and CAD were combined to create a new dept, Manufacturing Engineering Technology in 1990-91

CERTIFICATES

Auto Machine Tech				1								
Graphic Reproduction		1										
Mfg Tooling Tech		1										
Welding Tech				1			1					

Source: REGR2456, Report for Year End (1990-91 - 1992-93)

Source: Office of Institutional Studies, Paradox, GRADS9394.FBSTART.FSL 1993-94

*Changed to semester system Fall 1993

DEGREES/PROGRAMS

DEGREES CONFERRED AT FERRIS STATE UNIVERSITY

ACADEMIC YEAR (SUMMER QUARTER/SEMESTER - SPRING QUARTER/SEMESTER)

	CERTIFICATE	ASSOCIATE	BACHELOR	MASTERS	DOCTORATE
1986-1987	5	1,119	1,514	15	30
1987-1988	3	1,040	1,521	20	35
1988-1989	2	1,040	1,559	32	30
1989-1990	6	1,177	1,721	27	33
1990-1991	9	1,107	1,662	31	33
1991-1992	13	1,156	1,790	36	36
1992-1993	7	1,295	1,898	38	35
1993-1994	8	975	1,789	27	36

Note: Starting with Fall, 1993 changed to Semester System

Source: REGR 2456, Report for Year End, through 1992/93 year

Source: Office of Institutional Studies, Paradox, GRADS9394.FBSTART.FSL 1993/94 year

FERRIS STATE UNIVERSITY
APPROVED PROGRAMS

PROGRAM NAMES	COLLEGE	DEPARTMENT	DEGREE
Dental Hygiene	AHS	Allied Dental	AAS
Dental Technology	AHS	Allied Dental	AAS
Health Information Management	AHS	Health Management	BS
Health Information Technology	AHS	Health Management	AAS
Health Care Systems Administration	AHS	Health Management	BS
Industrial and Environmental Health Management	AHS	Environmental/Clinical Sciences	BS
Medical Laboratory Technology	AHS	Environmental/Clinical Sciences	AAS
Medical Technology	AHS	Environmental/Clinical Sciences	BS
Nuclear Medicine Technology	AHS	Hospital Related	AAS
Nuclear Medicine Technology	AHS	Hospital Related	BS
Nursing	AHS	Nursing	AAS
Nursing	AHS	Nursing	BSN
Radiography	AHS	Hospital Related	AAS
Respiratory Care	AHS	Hospital Related	AAS
Actuarial Science	A/S	Mathematics	BS
Applied Biology	A/S	Biological Sciences	BS
Applied Mathematics	A/S	Mathematics	BS
Biotechnology	A/S	Biological Sciences	BS
Industrial Chemistry Technology	A/S	Physical Sciences	AAS
Journalism	A/S	Language and Literature	AAA
Liberal Arts	A/S		AA
Pre-Dentistry	A/S		AS
Pre-Engineering	A/S		AS
Pre-Law	A/S		AA
Pre-Medicine	A/S		AS
Pre-Mortuary Science	A/S		AS
Pre-Optometry	A/S		AS
Pre-Pharmacy	A/S		AS
Pre-Veterinary Medicine	A/S		AS
Ornamental Horticulture Technology	A/S	Biological Sciences	AAS

DEGREES/PROGRAMS

PROGRAM NAMES	COLLEGE	DEPARTMENT	DEGREE
Social Work	A/S	Social Sciences	BSW
Technical and Professional Communication	A/S	Language and Literature	BS
Accountancy	BUS	Accountancy	BS
Accountancy/Computer Information Systems	BUS	Accountancy	BS
Accountancy/Finance	BUS	Accountancy	BS
Accountancy - Transfer	BUS	Accountancy	BS
Administrative Assistant	BUS	Computer Information Systems	AAS
Advertising	BUS	Marketing	BS
Business Administration	BUS	Management	BS
Computer Information Systems	BUS	Computer Information Systems	BS
Computer Information Systems/Management	BUS	Computer Information Systems	BS
Computer Information Systems/Marketing	BUS	Computer Information Systems	BS
Court and Freelance Reporting	BUS	Computer Information Systems	AAS
Finance	BUS	Management	BS
Food Service Management	BUS	Marketing	AAS
General Business	BUS	Management	AAS
Hospitality Management	BUS	Marketing	BS
Human Resource Management	BUS	Management	BS
Information Systems Management	BUS	Computer Information Systems	MS
Insurance	BUS	Management	BS
Insurance/Real Estate	BUS	Management	BS
International Business	BUS	Management	BS
International Business	BUS	Management	CERT.
Legal Assistant	BUS	Management	AAS
Management	BUS	Management	BS
Marketing	BUS	Marketing	BS
Marketing/Professional Golf Management	BUS	Marketing	BS
Marketing/Professional Tennis Management	BUS	Marketing	BS
Marketing/Sales	BUS	Marketing	BS
Master of Accountancy	BUS	Accountancy	M.Acc.
Office Automation Systems	BUS	Computer Information Systems	BS
Operations Management	BUS	Management	BS
Public Relations	BUS	Marketing	BS

DEGREES/PROGRAMS

PROGRAM NAMES	COLLEGE	DEPARTMENT	DEGREE
Quantitative Business	BUS	Management	BS
Real Estate	BUS	Management	AAS
Real Estate certificate	BUS	Management	CERT.
Retailing	BUS	Marketing	BS
Retailing	BUS	Marketing	AAS
Small Business Management	BUS	Management	BS
Visual Communication	BUS	Marketing	AAS
Visual Communication	BUS	Marketing	BS
Allied Health Education	EDU	Occupational Education	BS
Biology Education	EDU	Occupational Education	BS
Business Education	EDU	Occupational Education	BS
Career and Technical Education	EDU	Occupational Education	MS
Chemistry Education	EDU	Occupational Education	BS
Child Development	EDU	Child Development	AAS
Criminal Justice	EDU	Criminal Justice	BS
Mathematics Education	EDU	Occupational Education	BS
Pre-Criminal Justice	EDU	Criminal Justice	AA
Pre-Teaching Elementary	EDU	Occupational Education	AA
Pre-Teaching Secondary	EDU	Occupational Education	AA
Recreation Leadership and Management	EDU	Leisure Studies and Wellness	BS
Technical Education	EDU	Occupational Education	BS
Television Production	EDU	Television Production	BS
Training in Business and Industry	EDU	Occupational Education	BS
Wage Earning Home Economics Education	EDU	Occupational Education	BS
Optometry	OPT	Optometry	OD
Opticianry	OPT	Optometry	AAS
Optometric Technician	OPT	Optometry	AAS
Vision Science	OPT	Optometry	BS
Pharmacy	PHR	Pharmacy	BS
Doctor of Pharmacy/Add-on	PHR	Pharmacy	Pharm.D.
Doctor of Pharmacy/Track-in	PHR	Pharmacy	Pharm.D.
Architectural Technology	TEC	Construction	AAS
Automotive and Heavy Equipment Management	TEC	Automotive	BS

DEGREES/PROGRAMS

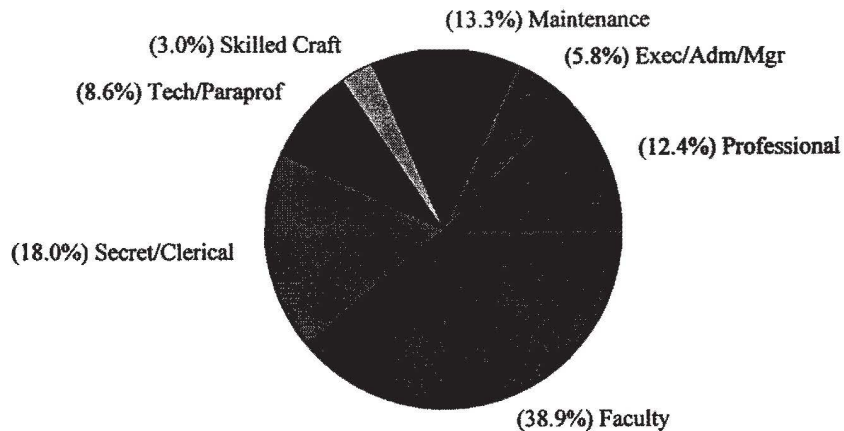
PROGRAM NAMES	COLLEGE	DEPARTMENT	DEGREE
Automotive Body	TEC	Automotive	AAS
Automotive Machine Technology	TEC	Automotive	AAS
Automotive Service Technology	TEC	Automotive	AAS
Building Construction Technology	TEC	Construction	AAS
Civil Engineering Technology	TEC	Construction	AAS
Construction Management	TEC	Construction	BS
Electrical/Electronics Engineering Technology	TEC	Electrical/Electronics	BS
Facilities Management	TEC	Construction	BS
Heavy Equipment Service Engineering Technology	TEC	Automotive	BS
Heavy Equipment Technology	TEC	Automotive	AAS
HVACR Engineering Technology	TEC	Construction	BS
HVACR Technology	TEC	Construction	AAS
Industrial Electronics Technology	TEC	Electrical/Electronics	AAS
Manufacturing Engineering Technology	TEC	Manufacturing Engineering Technology	BS
Manufacturing Tooling Technology	TEC	Manufacturing Engineering Technology	AAS
Mechanical Engineering Technology	TEC	Manufacturing Engineering Technology	AAS
Plastics Engineering Technology	TEC	Manufacturing Engineering Technology	BS
Plastics Technology	TEC	Manufacturing Engineering Technology	AAS
Printing Management	TEC	Graphic Arts	BS
Printing Technology	TEC	Graphic Arts	AAS
Product Design Engineering Technology	TEC	Manufacturing Engineering Technology	BS
Quality Technology	TEC	Manufacturing Engineering Technology	CERT.
Surveying Engineering	TEC	Construction	BS
Surveying Technology	TEC	Construction	AAS
Technical Drafting and Tool Design	TEC	Manufacturing Engineering Technology	AAS
Technical Illustration	TEC	Manufacturing Engineering Technology	AAS
Welding Engineering Technology	TEC	Manufacturing Engineering Technology	BS
Welding Technology	TEC	Manufacturing Engineering Technology	AAS

Source: p:\starr3\instud\shared\programs\master



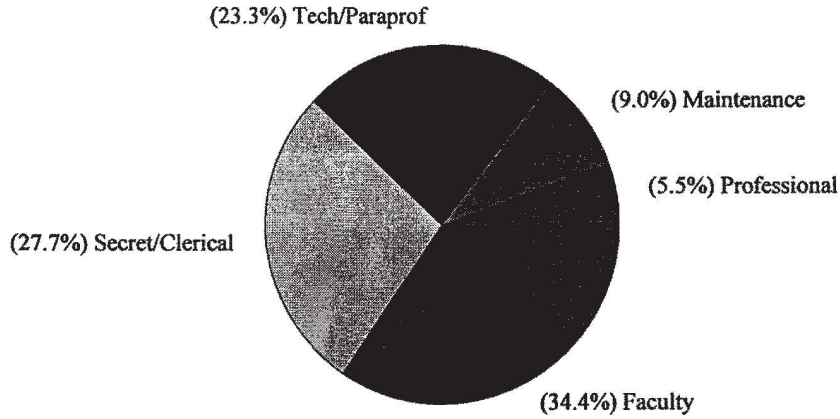
Faculty/Staff

**UNIVERSITY STAFF BY JOB CATEGORY AND SEX
FULL-TIME**



JOB CATEGORY	MALE		FEMALE		TOTAL	
	NUMBER	PERCENT	NUMBER	PERCENT	NUMBER	PERCENT
Professional	97	62.2%	59	37.8%	156	12.4%
Exec/Adm/Mgr	63	86.3%	10	13.7%	73	5.8%
Faculty	369	75.3%	121	24.7%	490	38.9%
Secret/Clerical	4	1.8%	222	98.2%	226	18.0%
Tech/Paraprof	51	47.2%	57	52.8%	108	8.6%
Skilled Craft	37	97.4%	1	2.6%	38	3.0%
Maintenance	83	49.4%	85	50.6%	168	13.3%
TOTAL	704	55.9%	555	44.1%	1,259	100.0%

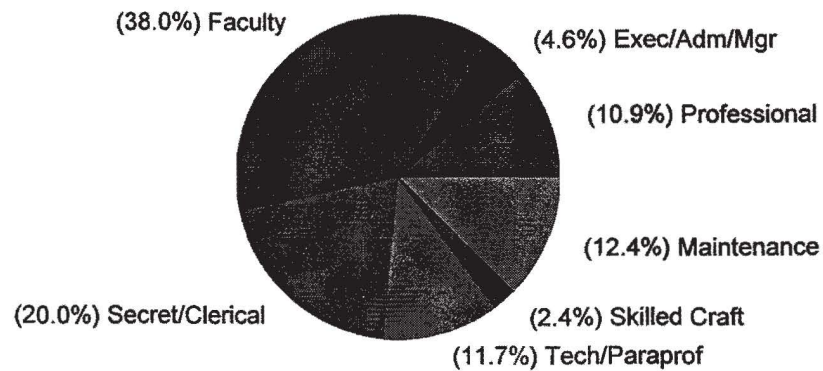
**UNIVERSITY STAFF BY JOB CATEGORY AND SEX
PART-TIME**



JOB CATEGORY	MALE		FEMALE		TOTAL	
	NUMBER	PERCENT	NUMBER	PERCENT	NUMBER	PERCENT
Professional	6	31.6%	13	68.4%	19	5.5%
Faculty	57	48.3%	61	51.7%	118	34.4%
Secret/Clerical	4	4.2%	91	95.8%	95	27.7%
Tech/Paraprof	31	38.8%	49	61.3%	80	23.3%
Maintenance	20	64.5%	11	35.5%	31	9.0%
TOTAL	118	34.4%	225	65.6%	343	100.0%

**TOTAL
UNIVERSITY STAFF BY JOB CATEGORY AND SEX**

JOB CATEGORY	MALE		FEMALE		TOTAL	
	NUMBER	PERCENT	NUMBER	PERCENT	NUMBER	PERCENT
Professional	103	58.9%	72	41.1%	175	10.9%
Exec/Adm/Mgr	63	86.3%	10	13.7%	73	4.6%
Faculty	426	70.1%	182	29.9%	608	38.0%
Secret/Clerical	8	2.5%	313	97.5%	321	20.0%
Tech/Paraprof	82	43.6%	106	56.4%	188	11.7%
Skilled Craft	37	97.4%	1	2.6%	38	2.4%
Maintenance	103	51.8%	96	48.2%	199	12.4%
TOTAL	822	51.3%	780	48.7%	1,602	100.0%



Source: Ferris State University, Office of Affirmative Action Report dated 9/26/94

FERRIS STATE UNIVERSITY
DISTINGUISHED TEACHER AWARDS

The Ferris State University Academic Senate oversees the selection of the Distinguished Teacher Awards. Teachers receiving this award have been nominated by their peers based on the following criteria: teaching excellence; participation in professional development activities; interest in students outside the classroom/laboratory; and exhibiting distinction as a member of the college community.

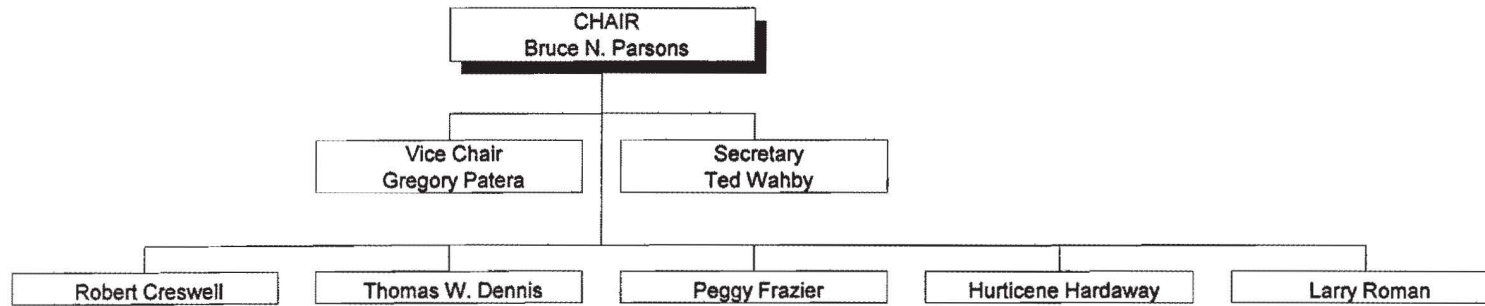
YEAR	AWARD RECIPIENT	COLLEGE
1963	Ralph E. Patullo	Arts and Sciences
1964	June B. Carr	Arts and Sciences
1965	Marguerite Jeserich	Arts and Sciences
1966	George Wells	Arts and Sciences
1967	Garnet Zimmerman	Technology
1968	Karlis Kazerovskis	Pharmacy
1969	Frank Karas	Arts and Sciences
1970	Robert K. Harry	Arts and Sciences
1971	Kenneth O. McManis	Arts and Sciences
1972	George N. Holcomb	Pharmacy
1973	Richard Hunter	Allied Health
1974	Roger F. Kennedy	Technology
1975	Everett J. Nienhouse	Arts and Sciences
1976	Barbara Sengelaub	Allied Health
1977	Max T. Yeley	Technology
1978	Richard L. Shaw	Technology
1979	Joseph J. Mitala	Pharmacy
1980	Sidney P. Sytsma	Business
1981	Richard A. Santer	Arts and Sciences
1982	Michael D. Ells	Allied Health
1982	Neill H. Nutter	Arts and Sciences
1983	Herbert L. Carson	Arts and Sciences
1984	Robert E. Friar	Arts and Sciences
1984	Newell H. Johnson	Technology
1985	Julia H. Bonkowski	Allied Health
1985	James P. Lehnert	Arts and Sciences
1986	Ada Lou Carson	Arts and Sciences
1987	Michael C. Cooper	Business
1987	Rose Ann Swartz	Business
1988	Robert C. Ferguson	Arts and Sciences
1988	Garth S. McHattie	Education
1989	Mark A. Curtis	Technology
1989	James D. Maas	Business
1990	Dr. Marilyn Keigley	Business
1990	Christine Towner	Allied Health
1991	Dr. Roxanne M. Cullen	Arts & Sciences
1991	Gary C. Horn	Arts & Sciences
1992	Bruce L. Beetley	Arts & Sciences
1992	John H. Landis	Allied Health Sciences
1993	Doug Fonner	Arts & Sciences
1993	Terry Nerbonne	Education
1994	Fred Lovgren	Business
1994	Edward Stuart	Technology

Source: Academic Senate



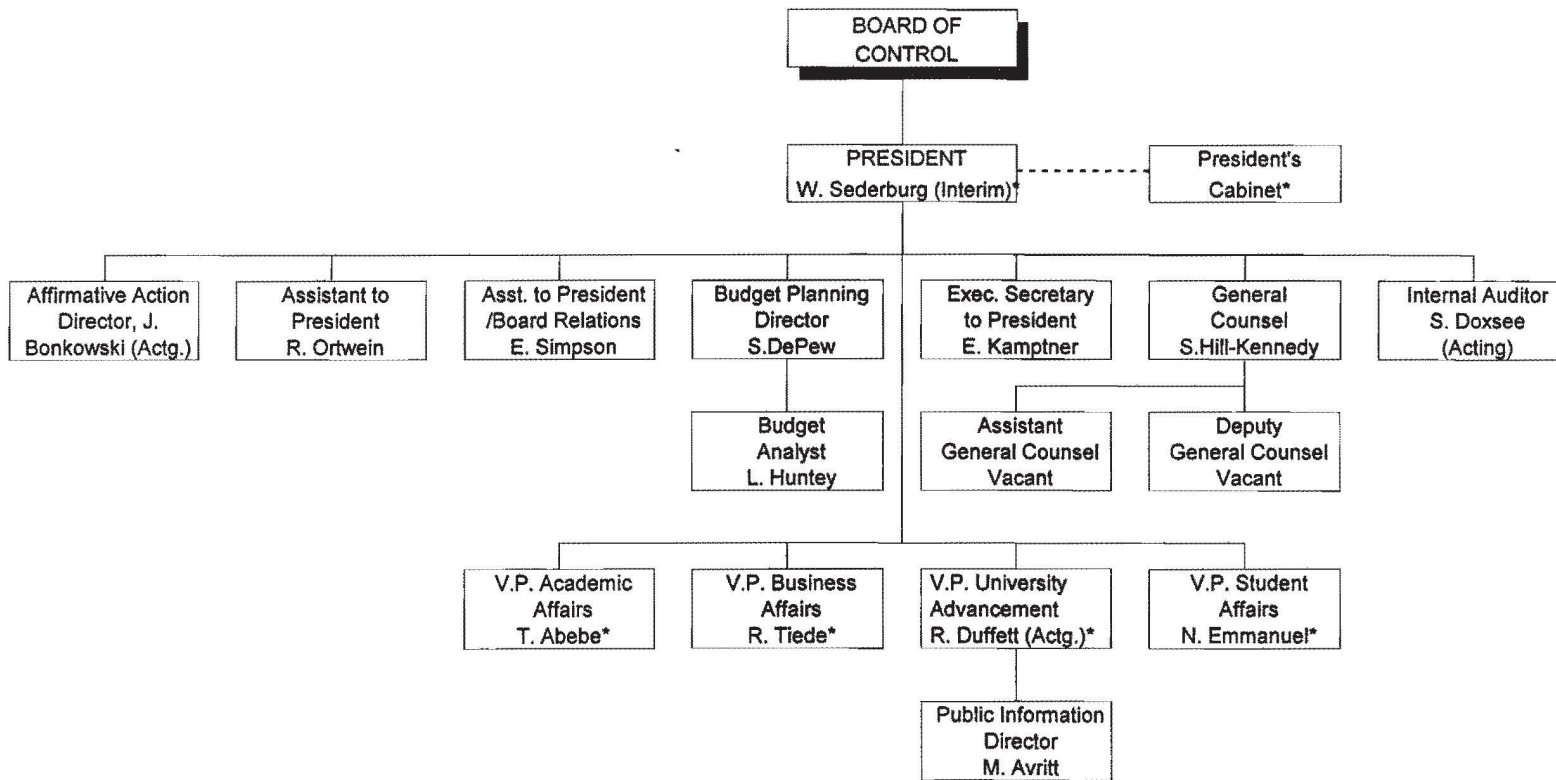
Organizational Charts

FERRIS STATE UNIVERSITY
BOARD OF CONTROL



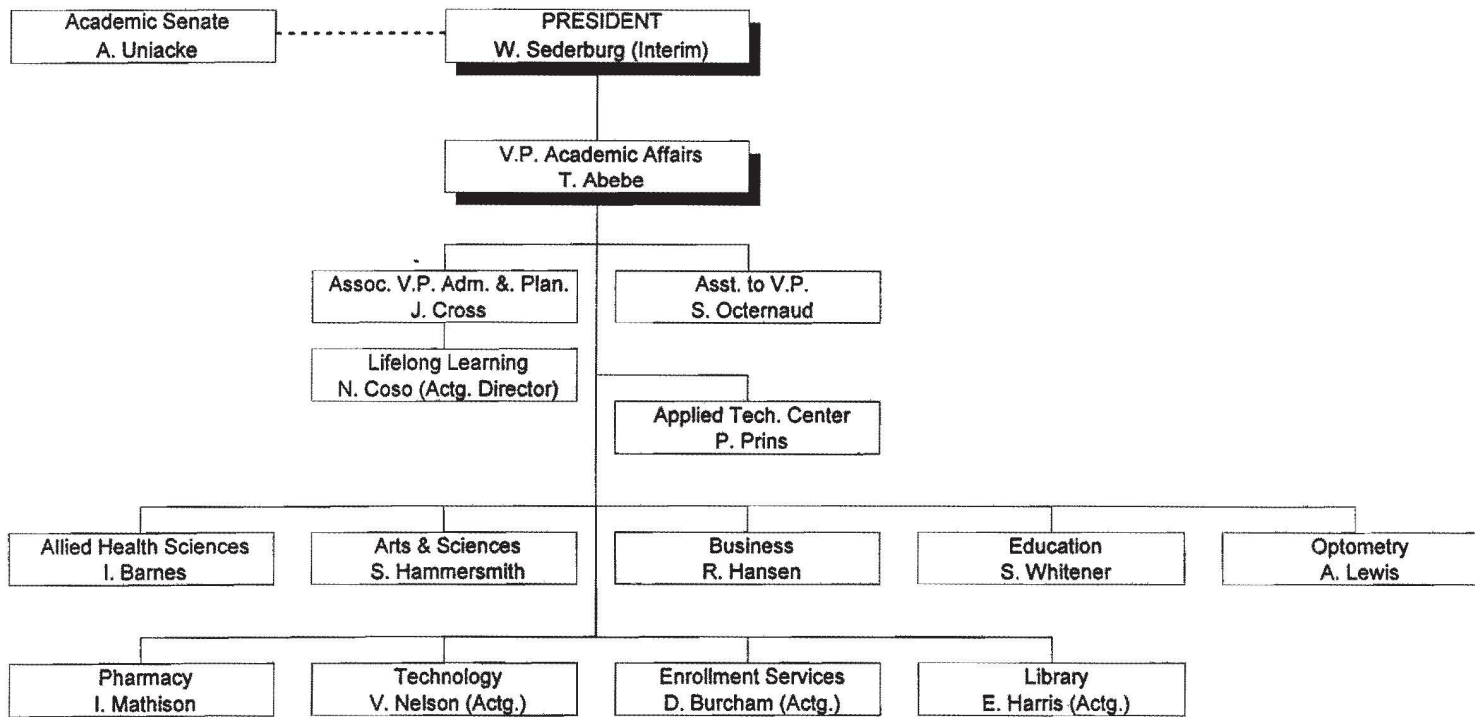
CURRENT AS OF DECEMBER 1, 1994

FERRIS STATE UNIVERSITY
BOARD OF CONTROL/EXECUTIVE DIVISION



CURRENT AS OF DECEMBER 1, 1994
 *CABINET MEMBERS

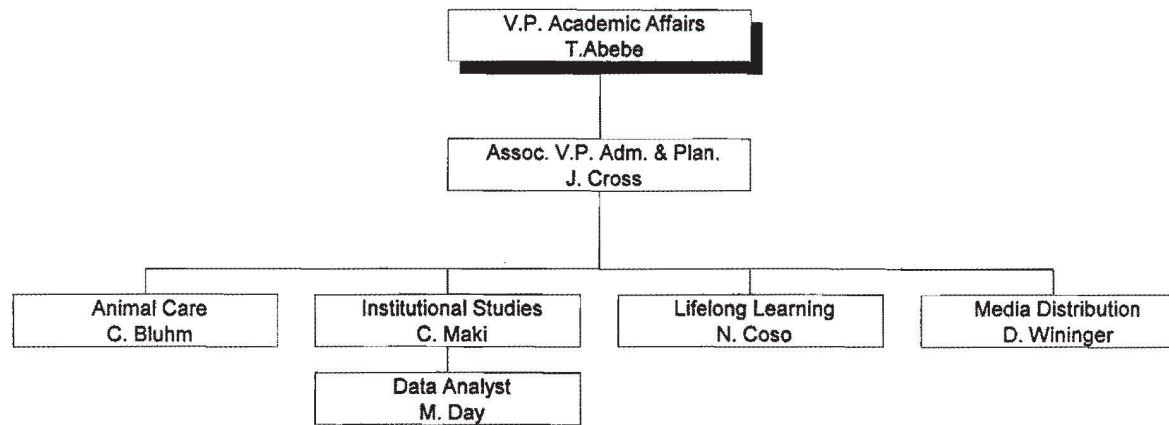
FERRIS STATE UNIVERSITY
ACADEMIC AFFAIRS DIVISION



CURRENT AS OF DECEMBER 1, 1994

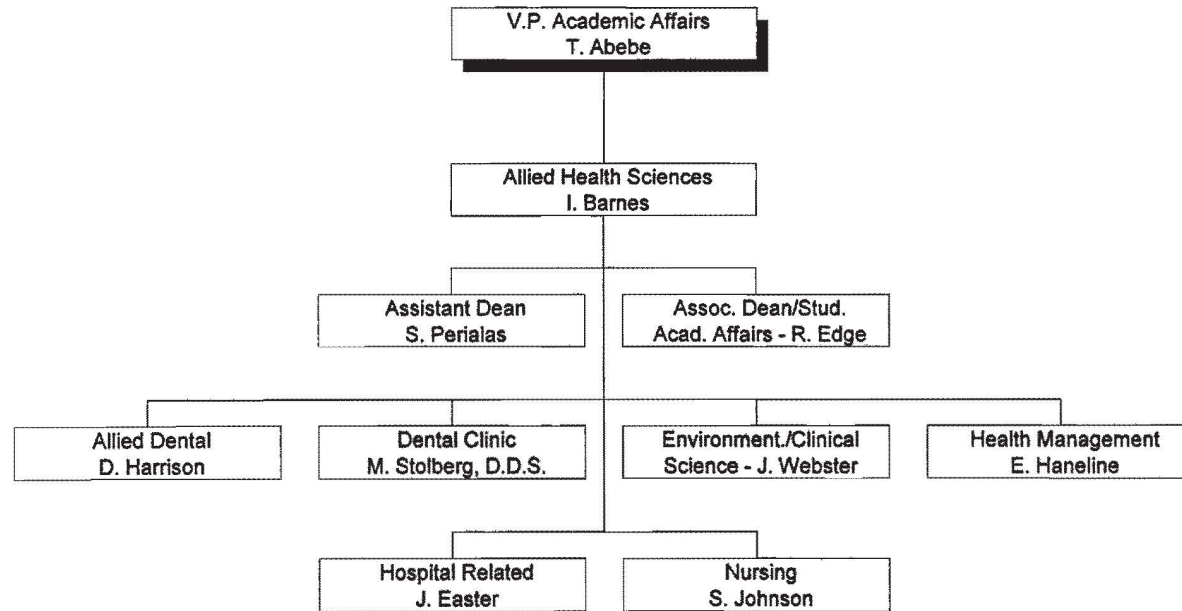
ORGANIZATIONAL CHARTS

FERRIS STATE UNIVERSITY
OFFICE OF ACADEMIC AFFAIRS



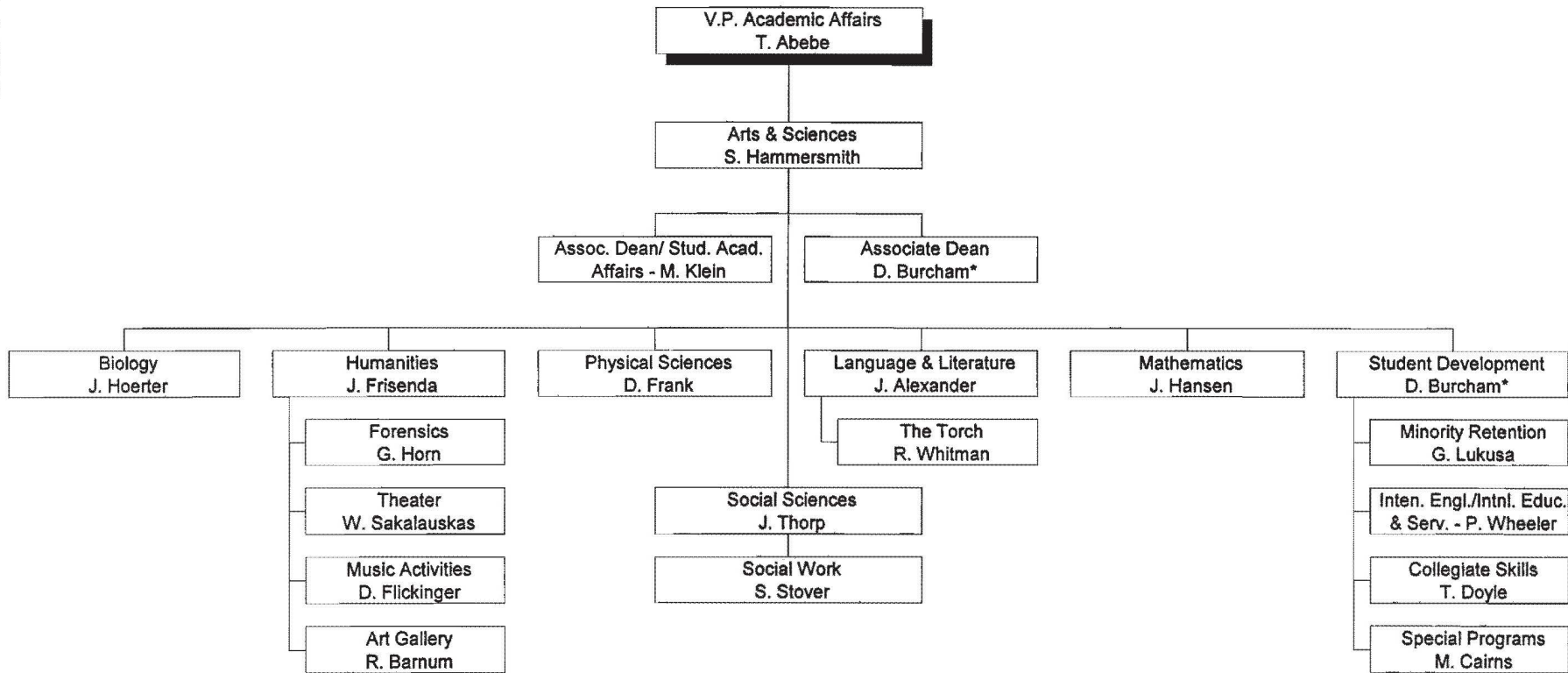
CURRENT AS OF DECEMBER 1, 1994

FERRIS STATE UNIVERSITY
ACADEMIC AFFAIRS DIVISION
COLLEGE OF ALLIED HEALTH SCIENCES



CURRENT AS OF DECEMBER 1, 1994

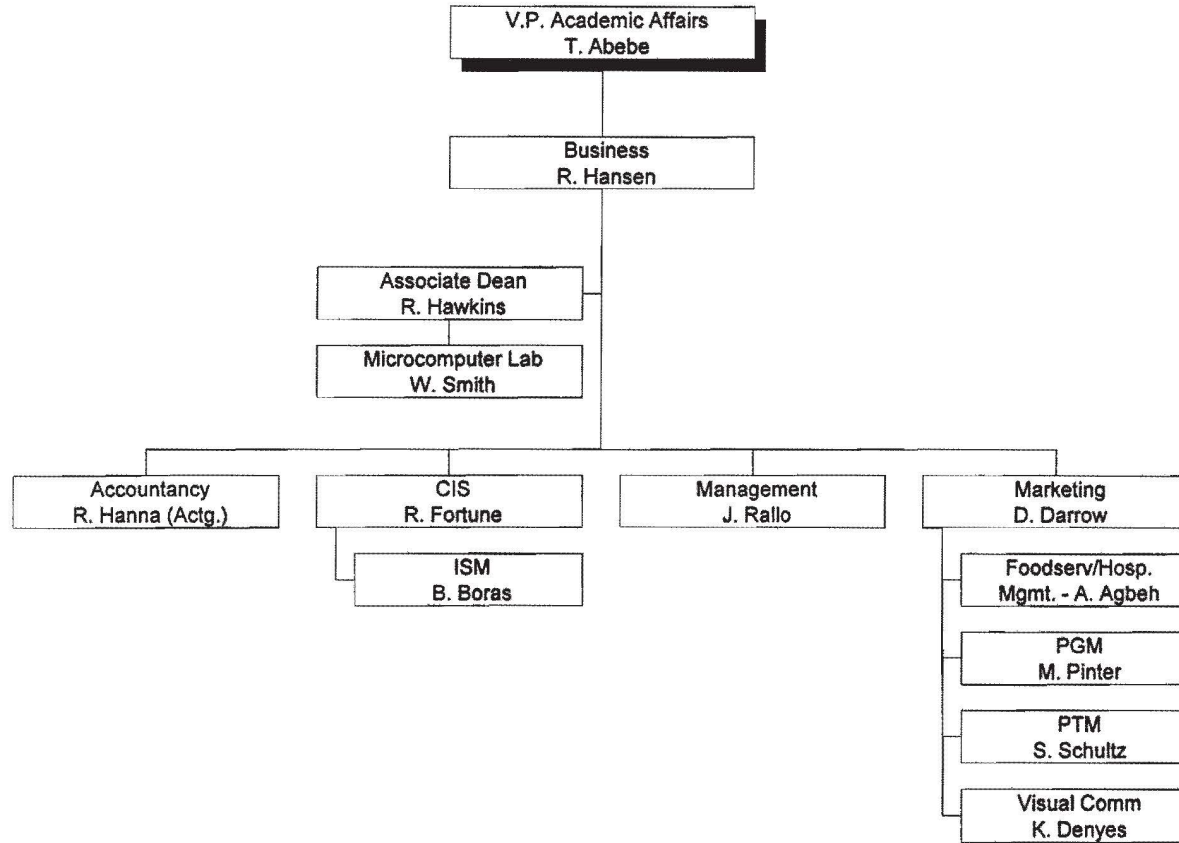
FERRIS STATE UNIVERSITY
ACADEMIC AFFAIRS DIVISION
COLLEGE OF ARTS & SCIENCES



CURRENT AS OF DECEMBER 1, 1994

*D. Burcham is currently released to the position of Dean for Enrollment Services for a six month period effective 9/2/94.

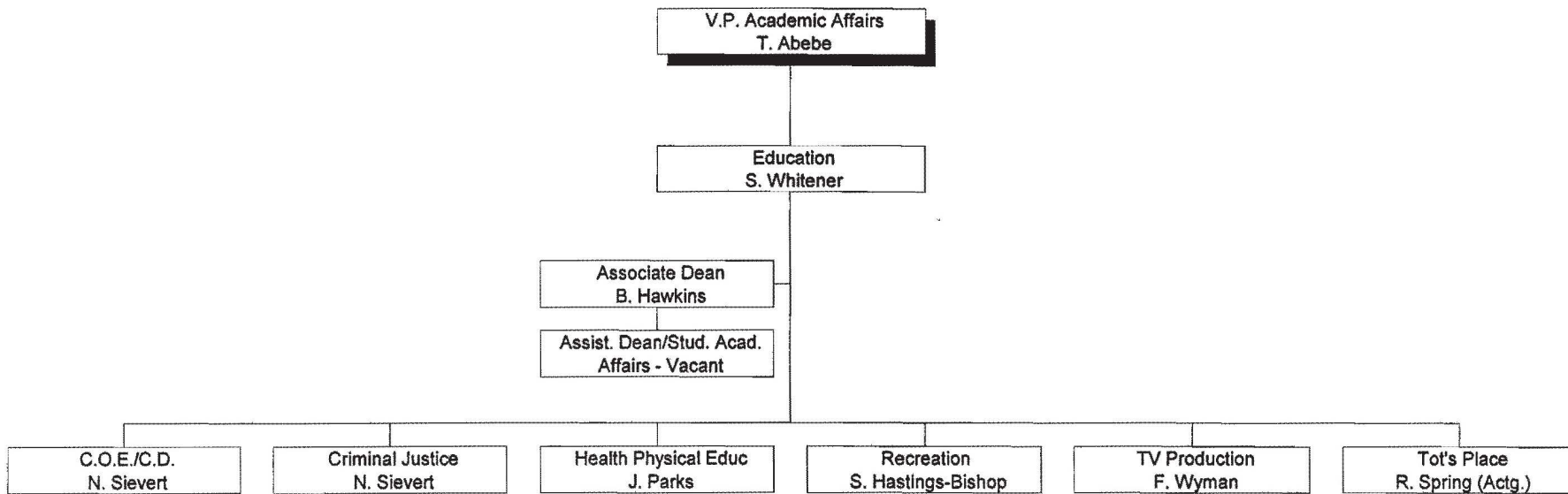
FERRIS STATE UNIVERSITY
ACADEMIC AFFAIRS DIVISION
COLLEGE OF BUSINESS



CURRENT AS OF DECEMBER 1, 1994

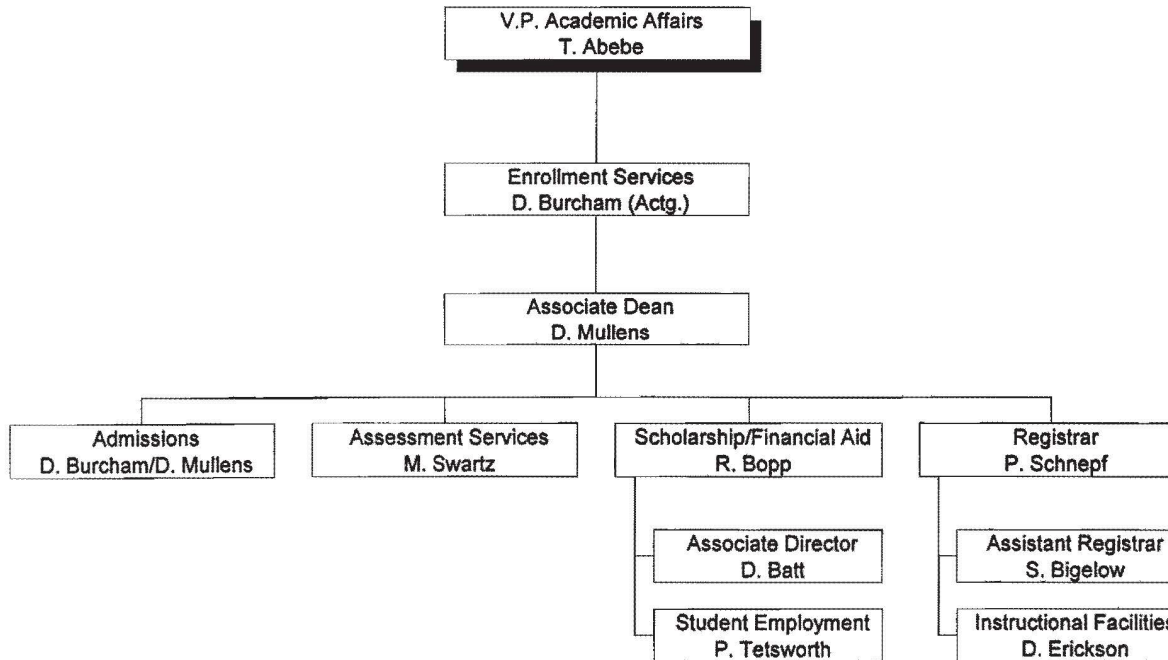
ORGANIZATIONAL CHARTS

FERRIS STATE UNIVERSITY
ACADEMIC AFFAIRS DIVISION
COLLEGE OF EDUCATION



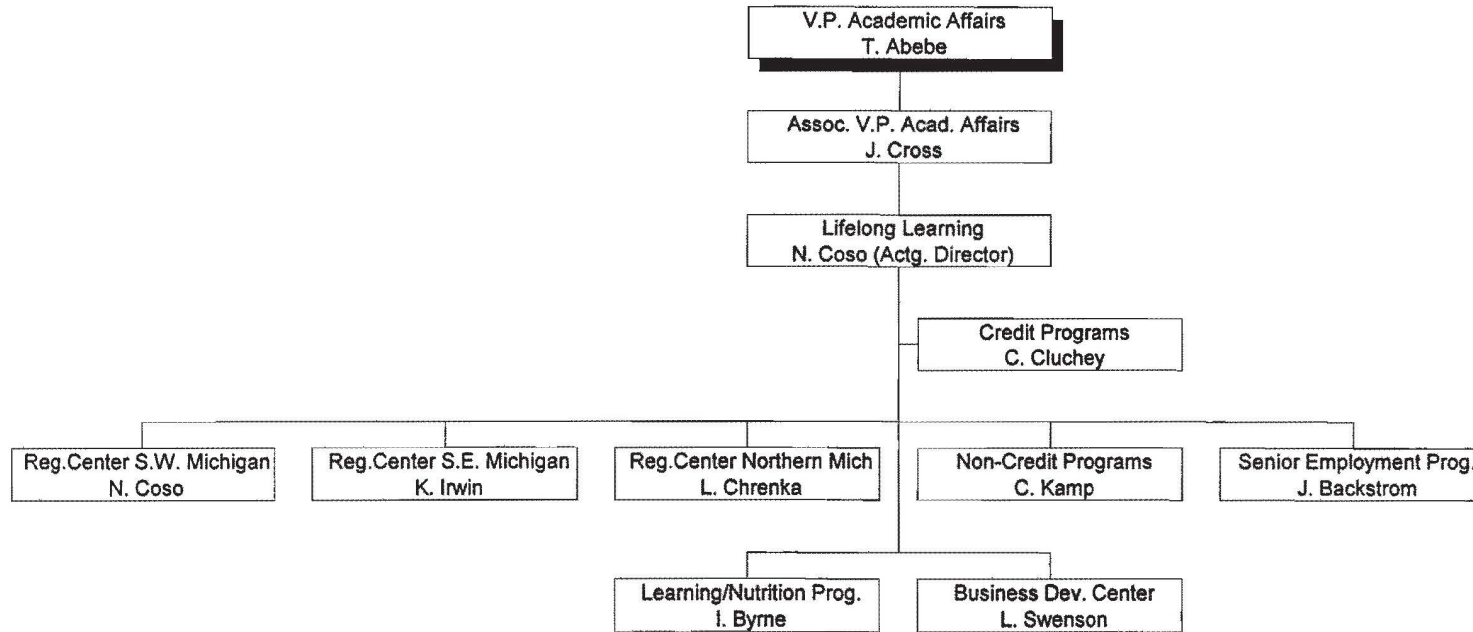
CURRENT AS OF DECEMBER 1, 1994

FERRIS STATE UNIVERSITY
ACADEMIC AFFAIRS DIVISION
ENROLLMENT SERVICES



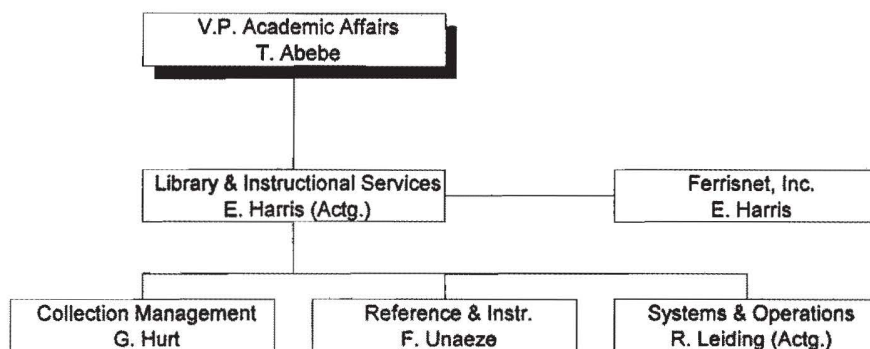
CURRENT AS OF DECEMBER 1, 1994

FERRIS STATE UNIVERSITY
ACADEMIC AFFAIRS DIVISION
LIFELONG LEARNING



CURRENT AS OF DECEMBER 1, 1994

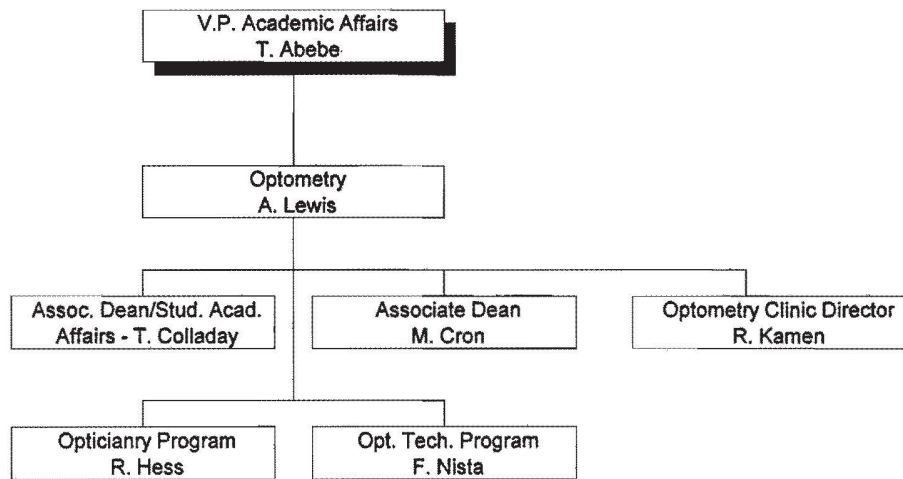
FERRIS STATE UNIVERSITY
ACADEMIC AFFAIRS DIVISION
LIBRARY & INSTRUCTIONAL SERVICES



CURRENT AS OF DECEMBER 1, 1994

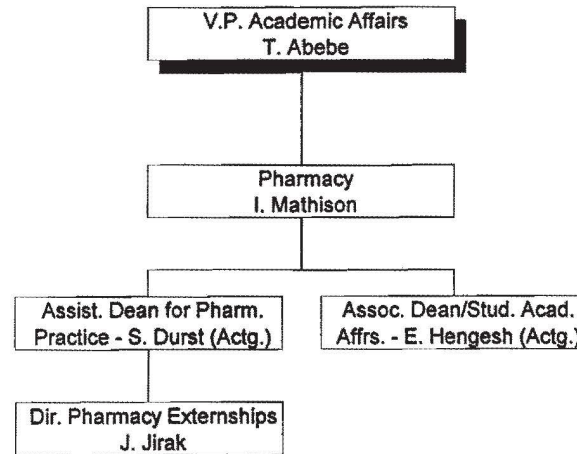
ORGANIZATIONAL CHARTS

FERRIS STATE UNIVERSITY
ACADEMIC AFFAIRS DIVISION
COLLEGE OF OPTOMETRY



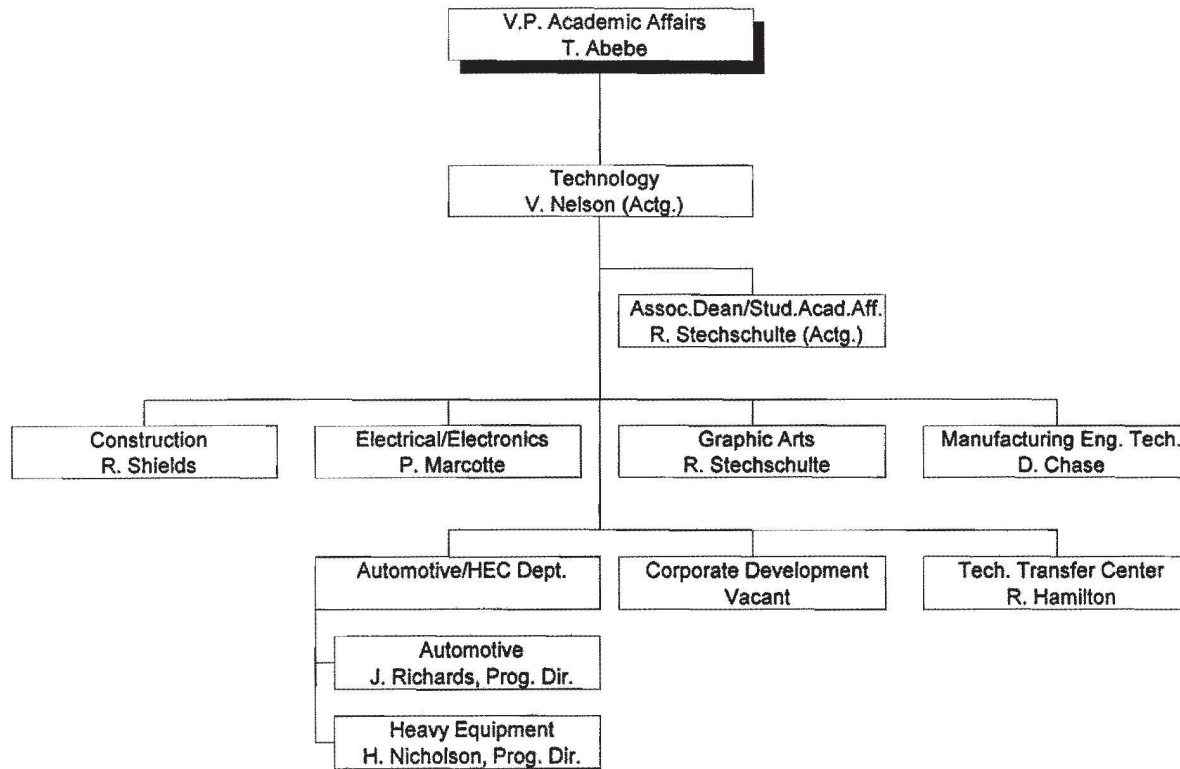
CURRENT AS OF DECEMBER 1, 1994

FERRIS STATE UNIVERSITY
ACADEMIC AFFAIRS DIVISION
COLLEGE OF PHARMACY



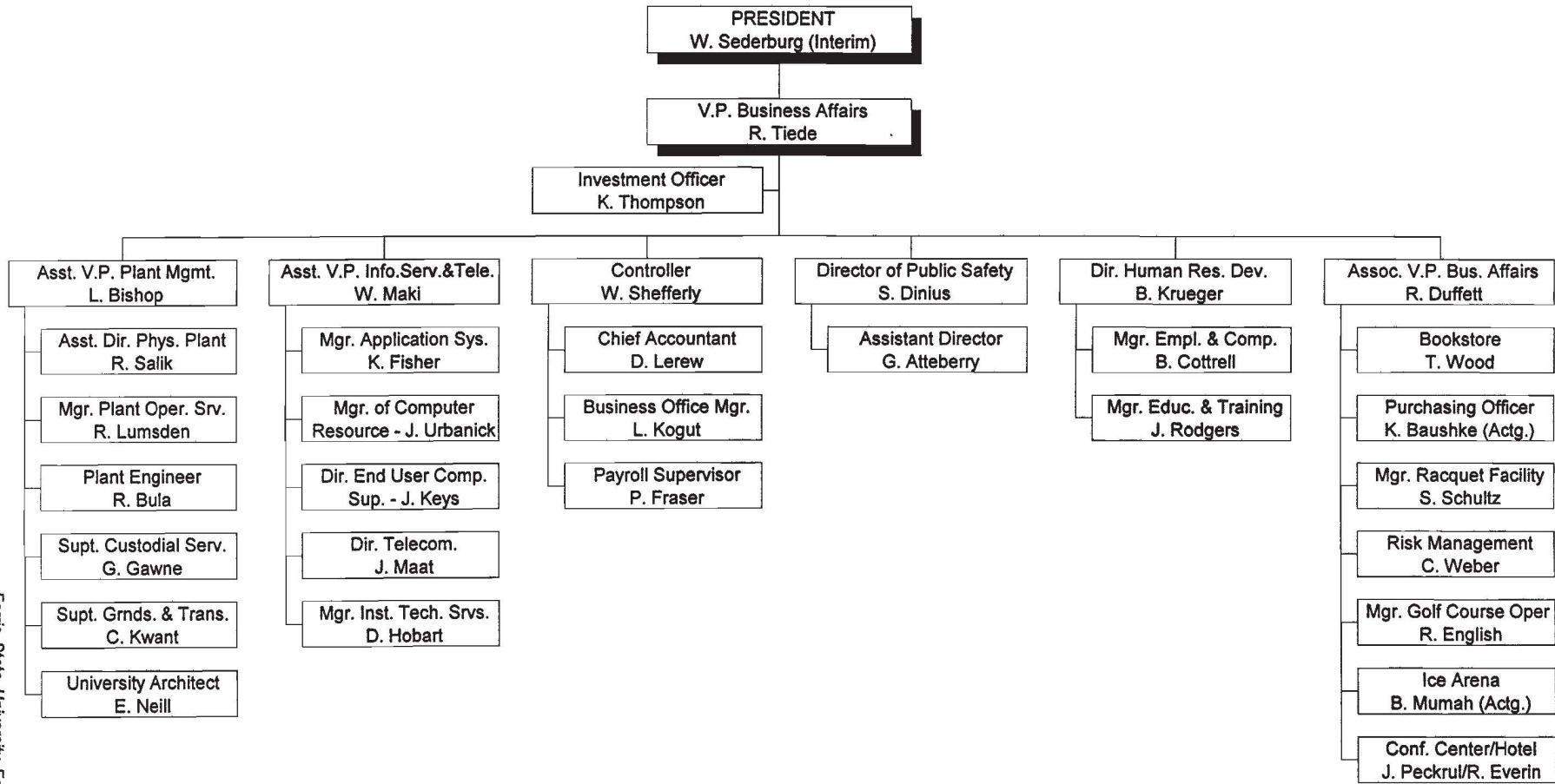
CURRENT AS OF DECEMBER 1, 1994

FERRIS STATE UNIVERSITY
ACADEMIC AFFAIRS DIVISION
COLLEGE OF TECHNOLOGY



CURRENT AS OF DECEMBER 1, 1994

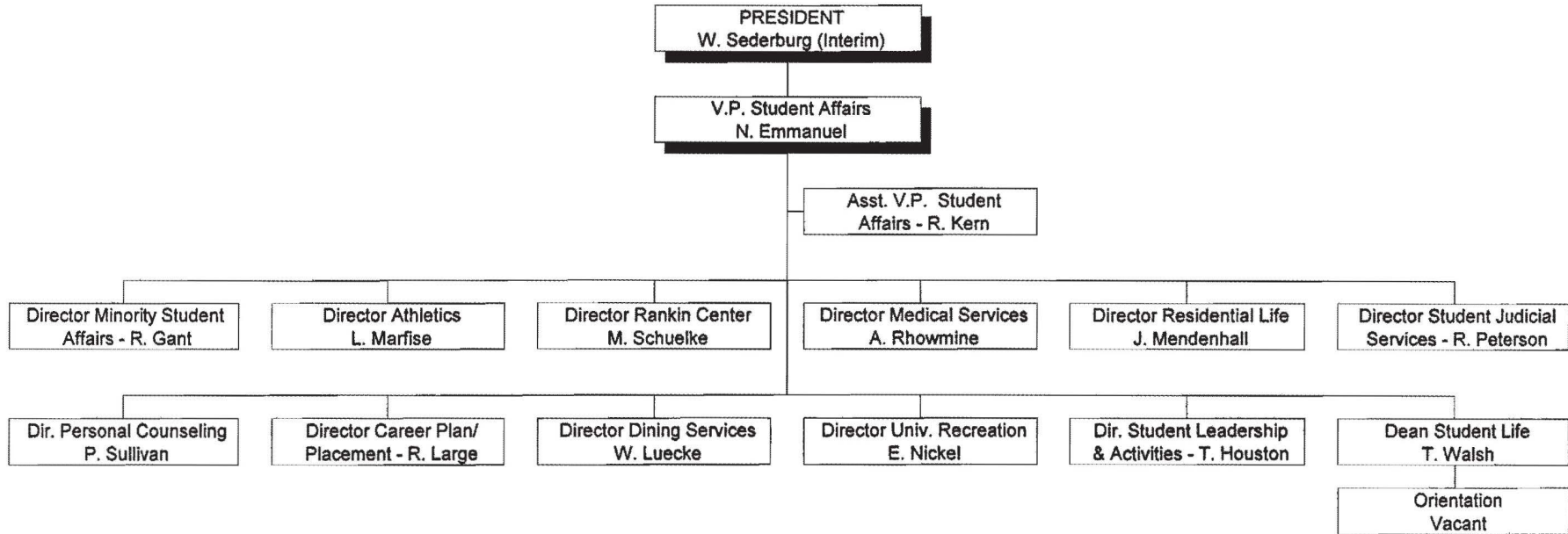
FERRIS STATE UNIVERSITY
BUSINESS AFFAIRS DIVISION



CURRENT AS OF DECEMBER 1, 1994

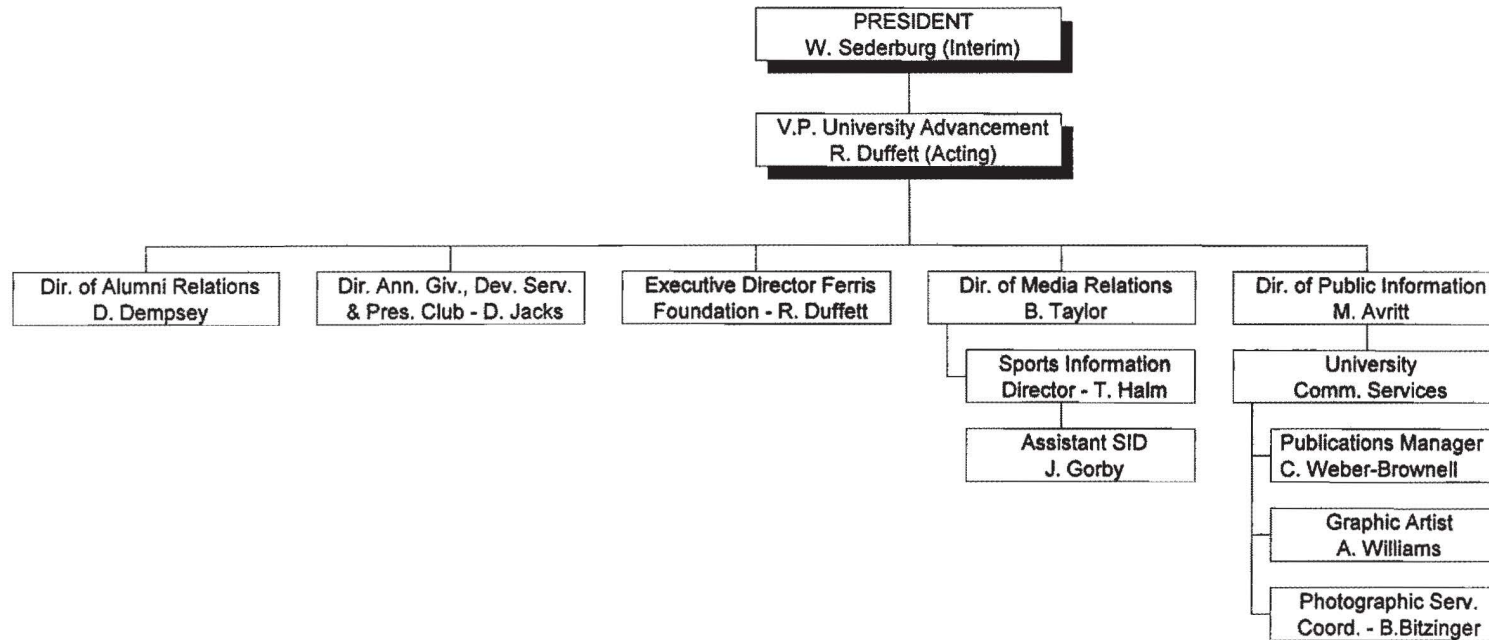
ORGANIZATIONAL CHARTS

FERRIS STATE UNIVERSITY STUDENT AFFAIRS DIVISION



CURRENT AS OF DECEMBER 1, 1994

FERRIS STATE UNIVERSITY
UNIVERSITY ADVANCEMENT DIVISION



CURRENT AS OF DECEMBER 1, 1994

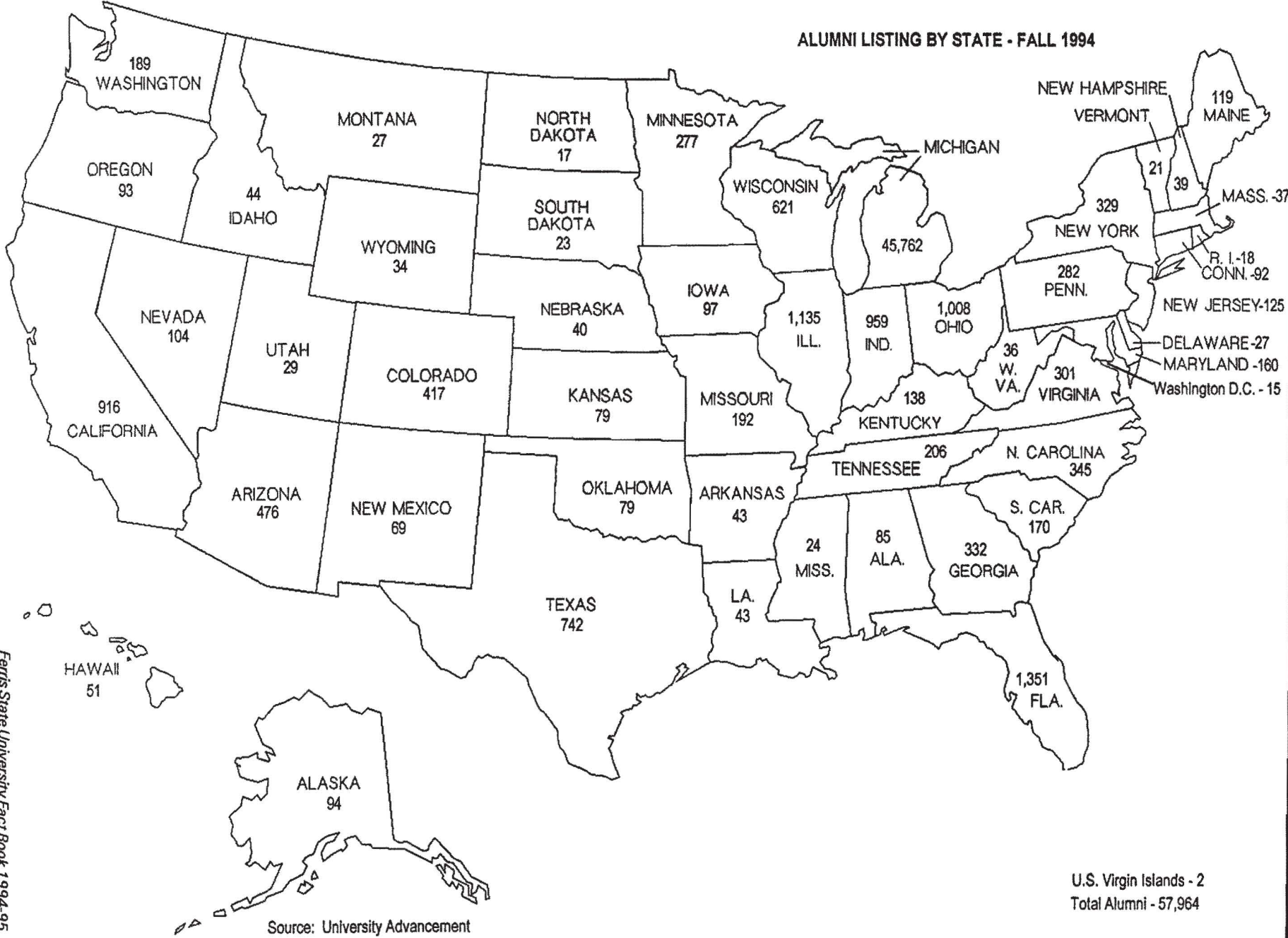
Alumni

FERRIS STATE UNIVERSITY SUMMARY OF PLACEMENT ACTIVITY FOR 1992-93 GRADUATES

SCHOOL/DEGREE	EMPLOYED				CONTINUING EDUCATION								Not Seeking Employment		Seeking Employment		TOTAL RESPONSE NUMBER	UNKNOWN NUMBER	RESPONSE RATE %	TOTAL GRADS NO.
	Related Field		Unrelated		FERRIS				OTHER INSTITUTION				NO.	%	NO.	%				
	NO.	%	NO.	%	Undergrad.	Graduate	Undergrad.	Graduate	Undergrad.	Graduate	Undergrad.	Graduate								
ALLIED HEALTH SCI																				
Baccalaureate	116	75.8	11	7.2	2	1.3	0	0.0	0	0.0	5	3.3	0	0.0	19	12.4	153	32	82.7	185
Associate	136	66.3	6	2.9	44	21.5	0	0.0	2	1.0	0	0.0	4	2.0	13	6.3	205	43	82.7	248
ARTS & SCIENCES																				
Baccalaureate	44	43.6	14	13.9	2	2.0	3	3.0	3	3.0	13	12.9	2	2.0	20	19.8	101	20	83.5	121
Associate	17	9.6	6	3.4	126	70.8	0	0.0	22	12.4	0	0.0	1	0.6	6	3.4	178	17	91.3	195
BUSINESS																				
Masters	3	60.0	2	40.0	0	0.0	0	0.0	0	0.0	0	0.0	0	0.0	0	0.0	5	4	55.6	9
Baccalaureate	392	60.8	104	16.1	0	0.0	6	0.9	3	0.5	4	0.6	9	1.4	127	19.7	645	225	74.1	870
Associate	40	20.7	15	7.8	124	64.2	0	0.0	7	3.6	0	0.0	0	0.0	7	3.6	193	19	91.0	212
EDUCATION																				
Masters	21	95.5	1	4.5	0	0.0	0	0.0	0	0.0	0	0.0	0	0.0	0	0.0	22	7	75.9	29
Baccalaureate	111	48.9	35	15.4	0	0.0	0	0.0	2	0.9	7	3.1	4	1.8	68	30.0	227	38	85.7	265
Associate	15	20.3	2	2.7	41	55.4	0	0.0	14	18.9	0	0.0	1	1.4	1	1.4	74	5	93.7	79
OPTOMETRY																				
O.D.	25	100.0	0	0.0	0	0.0	0	0.0	0	0.0	0	0.0	0	0.0	0	0.0	25	5	83.3	30
Baccalaureate	0	0.0	0	0.0	0	0.0	25	100.0	0	0.0	0	0.0	0	0.0	0	0.0	25	0	100.0	25
Associate	11	73.3	0	0.0	2	13.3	0	0.0	2	13.3	0	0.0	0	0.0	0	0.0	15	1	93.8	16
PHARMACY																				
Pharm.D.	3	100.0	0	0.0	0	0.0	0	0.0	0	0.0	0	0.0	0	0.0	0	0.0	3	2	60.0	5
Baccalaureate	105	92.9	0	0.0	0	0.0	5	4.4	0	0.0	1	0.9	0	0.0	2	1.8	113	25	81.9	138
TECHNOLOGY																				
Baccalaureate	233	86.9	15	5.6	1	0.4	0	0.0	0	0.0	1	0.4	2	0.7	16	6.0	268	34	88.7	302
Associate	111	21.9	19	3.7	353	69.5	0	0.0	12	2.4	0	0.0	1	0.2	12	2.4	508	40	92.7	548
TOTAL/AVG. % Placement for 91-92 Graduates	1,383	50.1	230	8.3	695	25.2	39	1.4	67	2.4	31	1.1	24	0.9	291	10.5	2,760	517	84.2	3,277
	1,267	50.4	231	9.2	614	24.4	32	1.3	48	1.9	31	1.2	13	0.5	279	11.1	2,515	502	83.4	3,017

Source: 1992-1993 Graduates and Their Beginning Salaries
Career Planning and Placement Services

ALUMNI LISTING BY STATE - FALL 1994



Source: University Advancement

U.S. Virgin Islands - 2
Total Alumni - 57,964

**FERRIS STATE UNIVERSITY
BEGINNING ANNUAL SALARIES FOR ASSOCIATE DEGREE GRADUATES
FOR THE YEAR 1992-1993**

<u>SCHOOL/CURRICULUM</u>	<u>NUMBER REPORTING</u>	<u>AVERAGE SALARY</u>	<u>80% RANGE</u>	
			<u>HIGH</u>	<u>LOW</u>
ALLIED HEALTH SCIENCES				
Dental Hygiene	10	31,740	36,400 -	27,664
Health Information Tech	5	16,043	19,200 -	13,020
Nuclear Medicine Tech	5	27,679	28,840 -	26,400
Nursing Tech	8	27,491	29,515 -	23,306
Radiography (X-Ray)	8	21,404	22,880 -	19,760
ARTS & SCIENCES				
Industrial Chemistry	8	21,983	22,740 -	22,000
BUSINESS				
Food Service Management	5	18,340	22,100 -	13,000
EDUCATION				
	N/A			
OPTOMETRY				
	N/A			
TECHNOLOGY				
Automotive Service	7	21,211	27,000 -	15,600
Heavy Equipment Service	12	22,394	31,720 -	16,640
Manufacturing Tooling	7	18,527	22,048 -	16,640
Refrig, Htg and A/C	7	18,076	21,000 -	16,000

NOTE : The above table includes only those curriculums where salary information was received from five or more students employed in positions related to their major. Figures do not include any incentive income over and above base salary. (It should be noted that many grads receive additional compensations, such as bonuses and overtime pay.)

Source: 1992-1993 Graduates and Their Beginning Salaries

**FERRIS STATE UNIVERSITY
BEGINNING ANNUAL SALARIES FOR BACCALAUREATE GRADUATES
FOR THE YEAR 1992-1993**

<u>SCHOOL/CURRICULUM</u>	<u>NUMBER REPORTING</u>	<u>AVERAGE SALARY</u>	<u>80% RANGE</u>	
			<u>HIGH</u>	<u>LOW</u>
ALLIED HEALTH SCIENCES				
Health Information Mgt	11	23,296	26,932 -	20,800
Health Systems Mgt	7	22,583	25,000 -	22,000
Ind & Env Health Mgt	10	25,763	31,000 -	20,800
Medical Technology	8	27,407	28,080 -	26,364
ARTS & SCIENCES				
Applied Biology	5	24,925	26,884 -	25,948
Social Work	10	18,825	24,960 -	15,600
BUSINESS				
Accounting	14	24,505	36,000 -	12,960
Advertising	6	20,103	29,000 -	14,440
Business Administration	28	21,240	27,000 -	12,480
Computer Info Systems	20	27,649	30,663 -	24,960
Finance	8	27,063	33,000 -	16,000
Hospitality Management	17	22,111	26,400 -	16,400
Insurance	10	21,996	24,960 -	16,500
Management	10	22,098	28,000 -	16,800
Marketing	10	20,640	23,000 -	16,500
Marketing/Pro Golf Mgt	23	17,364	24,000 -	12,000
Marketing/Sales	13	20,380	27,000 -	15,000
EDUCATION				
Criminal Justice	18	18,680	22,800 -	13,832
TV Production	7	20,366	22,000 -	20,800
OPTOMETRY	N/A			
PHARMACY				
Registered	58	45,643	50,000 -	43,500
Intern Status	21	27,957	31,200 -	24,000
TECHNOLOGY				
Auto & Heavy Equip Mgt	48	25,859	33,280 -	15,600
Construction Mgt	22	26,601	30,000 -	21,840
HVACR Engr Tech	12	30,273	32,500 -	28,000
Manufacturing Engr Tech	5	31,060	34,000 -	32,000
Plastics Engr Tech	24	30,915	36,000 -	25,000
Printing Management	8	18,345	20,800 -	15,600
Product Design Engr Tech	11	26,480	30,420 -	22,500
Surveying Engineering	8	28,605	30,000 -	25,000
Welding Engineering Tech	7	31,200	33,500 -	28,000

NOTE : The above table include only those curriculums where salary information was received from five or more students employed in positions related to their major. Figures do not include any incentive income over and above base salary. (It should be noted that many grads receive additional compensations, such as bonuses and overtime pay.)

RECIPIENTS OF ALUMNI AWARDS

Since 1956, Commencement week activities have included the presentation by the Ferris State University Alumni Association of Distinguished Alumni Awards recognizing exceptional career success and noteworthy fidelity and devotion to the University. Distinguished Alumni Award recipients are:

1956
Frederick L. Caldena
Ralph Pino
Nate S. Shapero

1957
Walter R. Braund
Jean DeBoer
Edward M. Sharpe

1958
C. V. Burnett
John H. Butts
Ray M. Hardy
Maurice C. LaClaire
Charles W. Martin
Fred B. Post
W. C. Taggart
Robert H. Wisner

1959
Howard C. Grimes
James T. Jones
Willard J. Nash
Arthur R. Sherk

1960
Manley M. Ellis
Thomas F. Heatley
Thaddeus B. Taylor

1961
C. V. Buttleman
Merta L. Reed
Gideon E. Smith

1962
Walter Armbruster
Joseph C. Hirschfield
Hattie Smith Lear Baribeau

1963
Clare F. Jarecki
Charles S. Neithercut
John W. Tenny

1964
Bess Rose Fishman
Lewie H. Hull
J. Arthur Pino

1965
Leo F. Duggan
C. Gordon Phillips
George C. Quinnell

1966
L. Dale Faunce
Carlton H. Runcieman

1967
Albert F. Cleveland
Roy A. Darling
James C. Finney, Sr.
Willard J. Nash

1968
Norman E. Borgerson
Ann W. Sawasky
Reuben E. Trippensee

1969
Carroll Boutell
Elmon Cataline

1970
Charles E. Fairman
Ethel Taylor Pierce
John Stahlin

1971
Stanley J. Byington
Gerald McKessy
Raymond Sines

1972
Clarence Freeman
Delbert Long
Ramsay Wardrop

1973
Bert C. Brennan
Albert B. Doherty, III
John W. Spicer
Fred A. Westerman

1974
Frank Curtis
Phillip Runkel
Colin Smith

1975
Rex O. Graff
Fred Schnarr
Chester I. Williams

1976
S. John Byington
Gerald L. DeHaan
Clare G. Johnson
H. James Renaud

1977
James R. Hess
Florence I. Holden
Robert J. Norsworthy

1978
Ruth Gibson Butler
Leonard W. Gopp
Robert C. Redman

1979
Peggy A. Frazier
Thomas P. Scholler
Lee A. Westberg

1980
E. Elaine Davies
Kuno Hammerberg
John F. Mangrum

1981
Alvin L. Burrige
Floyd E. Curtis
Avis J. Ericson

1982
Howard L. Dell
Jack M. Newcomb
Rena D. Westra

1983
Douglas W. Call
Darnell E. Cole
Margaret Ethel Denise
Elton "Ott" Gingrich

1984
Richard C. Andresen
Edmund D. Farhat
Kenneth J. Hicks

1985
Jean D. Deupree
Arnold L. Johnson
Bruce N. Parsons

1986
Richard L. Antonini
Bertil G. Carlson
Kenneth L. Cook
Jack D. Lewis

1987
Maurice Q. Bectel
Roger W. Anderson
H. Kearney Walters

1988
Marjorie L. Fleming
George H. Ryan, Sr.
Gordon E. Kamstra
Charles E. Lippert

1989
Albert J. Coudron
Kenneth W. Kirk
George J. Menoutes
Jerry R. Tubbs

1990
Philip E. Hoffman
Dennis B. Lerner
Roger G. Stoll
Clinton L. Swinehart

1991
Darroll Z. Howard
Jane Reagan Jones
Kenneth E. McCourt

1992
Paul E. Boyer
Richard E. Hurst
Carolyn C. Kilpatrick
James Middaugh

1993
Eugene A. DeFouw
Douglas P. Johnson
Barbara L. Ottinger
Louis M. Sesti

1994
Joseph C. Barney, Jr.
Vernita Burrows
R. Thomas Cook
Kenneth Hoexum
Robert N. Tenney

Source: Spring Commencement Program

Budget

**BUDGETARY PLANNING AND ANALYSIS
SUMMARY OF 1994-95 TUITION/FEES AND ROOM/BOARD
MICHIGAN PUBLIC UNIVERSITIES**

	FY-95 TUITION	TUITION RANK	FY-95 RM/BRD	ROOM/ BOARD RANK	FY-95 TOTAL COST	TOTAL COST RANK
University of Michigan	5,472	1	4,659	1	10,131	1
Michigan State	4,797	2	3,734	12	8,531	2
Michigan Tech	3,636	4	3,978	8	7,614	3
Ferris	3,412	6	4,171	3	7,583	4
Lake Superior	3,312	9	4,186	2	7,498	5
Eastern Michigan	3,299	10	4,148	4	7,447	6
Western Michigan	3,330	8	4,097	5	7,427	7
Oakland	3,353	7	4,030	7	7,383	8
Grand Valley	3,030	14	4,060	6	7,090	9
Central Michigan	3,036	13	3,900	10	6,936	10
Saginaw Valley	3,103	11	3,820	11	6,923	11
Northern Michigan	2,778	15	3,965	9	6,743	12
Wayne State	3,442	5				
UM - Flint	3,092	12				
UM - Dearborn	3,721	3				
UNWEIGHTED AVERAGE	3,521		4,062		7,609	

Sources: Presidents Council, State Universities of Michigan
Summary of Tuition/Housing Charges, 11/4/94

BUDGET

The general fund operating budget information was not available at the time of publication. Therefore, it was not included in this year's Fact Book.

Facilities

**SUMMARY OF ON CAMPUS FACILITIES OWNED OR RENTED
BY FERRIS STATE UNIVERSITY**

BUILDING	SQUARE FEET	CUBIC FEET	YEAR CONSTRUCTED OR IMPROVED
GENERAL FUNDED FACILITIES			
ALUMNI BUILDING	34,600	510,000	1929
AUTOMOTIVE CENTER	77,000	1,235,400	1956-88
BISHOP HALL	50,900	480,600	1968-87
BUSINESS BUILDING	90,600	700,000	1970
CARILLON TOWER	100	4,900	1968
CONSTRUCTION TECHNOLOGY	23,400	500,000	1962
CREATIVE ARTS	7,200	93,900	1965
DEPT OF PUBLIC SAFETY	4,400	35,000	1959-83
EWIGLEBEN SPORTS COMPLEX	39,800	567,950	1974-82
GENERAL SERVICES BLDG	27,143	490,330	1984-88
GROUNDS FACILITIES	9,032	98,856	1979
HEALTH CENTER (50%)	9,200	91,250	1959-67
HEALTH & PHYS EDUC	96,300	2,220,000	1962
HEAVY EQUIPMENT TECH	52,000	1,188,000	1987
INSTR RESOURCE CENTER	54,700	630,000	1969
JOHNSON HALL	33,600	328,600	1959
LIBRARY	57,000	723,900	1967
MUSIC CENTER	10,000	137,900	1962
PENNOCK HALL	50,900	480,600	1968-77
PHARMACY BUILDING	62,200	1,214,300	1972
PLASTICS TECHNOLOGY	18,800	230,700	1987
POWER PLANT	19,900	421,900	1955-88
PRAKKEN BUILDING	42,100	503,900	1952
SCIENCE BUILDING	107,300	1,680,000	1955-67
STARR BUILDING	86,400	1,607,200	1962
SWAN BUILDING	131,600	1,685,400	1966-88
TOP TAGGART EAST	400	3,000	1965
TOP TAGGART WEST	800	6,000	1970
UNIVERSITY RESIDENCE	6,140	49,120	1958-84
VFS ALLIED HEALTH BLDG	67,400	1,493,800	1979
WEST BUILDING	23,700	292,500	1952-85
WEST COMMONS	19,800	269,300	1968
TOTAL GENERAL FUNDED	1,314,415	19,974,306	
FSU'S GRAND TOTAL	3,013,183	41,413,545	

Source: University Architect

FACILITIES

SUMMARY OF ON CAMPUS FACILITIES OWNED OR RENTED BY FERRIS STATE UNIVERSITY

<u>BUILDING</u>	<u>SQUARE FEET</u>	<u>CUBIC FEET</u>	<u>YEAR CONSTRUCTED OR IMPROVED</u>
NON-GENERAL FUNDED FACILITIES			
BOND HALL	90,500	820,400	1966
BROPHY HALL	47,000	482,750	1962
CARLISLE HALL	47,200	423,000	1957
CLARK HALL	41,500	360,900	1960
CONFERENCE CENTER	25,238	380,000	1990
COPY CENTER	3,380	34,400	1969
COUNTY STORAGE (RENTED)	20,000	240,000	1989
CRAMER HALL	91,700	824,700	1969
EAST CAMPUS APARTMENTS	72,600	636,200	1955
HALLISY HALL	44,700	406,000	1958
HEALTH CENTER (50%)	9,200	91,250	1959-67
HELEN FERRIS HALL	44,300	383,000	1956
HENDERSON HALL	44,900	405,500	1965
HOLIDAY INN HOTEL COMPLEX	72,789	582,000	1990
ICE ARENA	64,900	925,850	1974
KATKE GOLF CART STORAGE	2,800	27,600	1984
KATKE CLUBHOUSE/MAINT BLDG	5,600	83,200	1974
KNOLLCREST COMMONS	11,094	292,860	1961
MASSELINK COMPLEX	104,700	942,300	1955-58
MCKESSY HOUSE	6,534	52,000	1989
MCNERNEY HALL	47,000	482,750	1962
MERRILL HALL	51,700	515,050	1961
MILLER HALL	47,382	444,245	1963
PICKELL HALL	50,400	468,600	1964
PUTERBAUGH HALL	46,400	436,400	1965
RACQUET BALL FACILITY	38,800	994,000	1980-87
RANKIN CENTER	109,100	1,385,900	1958-87
SOUTH CAMPUS APARTMENTS	53,200	466,400	1958
SOUTH COMMONS	14,664	161,895	1963
SOUTHWEST COMMONS	19,500	253,600	1965-86
SOUTHWEST POWER PLANT	2,200	33,200	1964
TECHNOLOGY TRADE CENTER	16,836	192,612	1985-87
TAGGART HALL	47,800	450,600	1964
TRAVIS HALL	51,700	515,050	1961
VANDERCOOK HALL	42,350	394,000	1957
WARD HALL	41,320	407,260	1963
WEST CAMPUS APARTMENTS	258,281	5,443,767	1993-94
TOTAL NON-GENERAL FUNDED	1,698,768	21,439,239	

Ferris State University Campus Map Key

BUILDING	ABBREVIATION	COORDINATES	BUILDING	ABBREVIATION	COORDINATES	BUILDING	ABBREVIATION	COORDINATES
Austin Building (Lifelong Learning)	ALU	A2	Hudson Hall	HEN	F4	(College of Arts & Sciences)	SCA	F2
Braham Health Center	BHC	D2	Jordan Hall	JOH	D2	South Commons	SC	F2
B-stop Hall (College of Education)	BIS	F6	(College of Technology)	KAT	D10	Student Services	SS	F4
Blair Clark Center	BCC	F5	Knollcrest Commons	KNC	O3	(Housing Office)	SHC	F4
Bond Hall North	BON-N	F5	Library	LIB	D3	Southwest Commons	SWC	F4
Bond Hall South	BON-S	F5	Manufacturing Resource & Productivity Center	MRPC	E Complex & Area Map	Star Educational Center (College of Arts & Sciences Administration)	STR	C3
Brophy Hall	BRO	G2	Massena Commons	MAS	B9	Swain Building (College of Technology)	SWN	C1
Carleton Hall	CAR	B2	Massena Hall East	MAS-E	B1	Tappan Hall	TAG	F3
Central Heating Plant	CHP	B2	Massena Hall West	MAS-W	B2	Automotive Center	AC	A2
Clark Hall	CLA	D1	McKasey House	MCK	R3	(College of Technology)	CTC	A2
Conference Center	CCN	C10	McHenry Hall	MCN	G2	Construction Technology Center	CTC	A2
Cozy Center	CCP	D2	Merrill Hall	MER	O3	Tava Hall	TRV	G3
COP			Miller Hall	MIL	O3	Van Hook Hall	VAN	E9
Cramer Hall	CRH	D4	Mus Center (College of Arts & Sciences)	MUS	D9	Victor F. Spafford Center (College of Arts & Sciences)	VFS	E4
CTA			Parrock Hall	PEN	E6	Ward Hall	WAR	F3
Creative Arts Center (College of Business)	CAC	F5	Pickell Hall	PIC	F3	West Building	WES	A2
East Campus Apartments	ECA	D1	Plattus Technology (College of Technology)	PTC	C2	West Campus Apartments	WCA	F7
Englebert Sports Complex (Ice Area)	ESC	G4	Pratkan Building (Admissions)	PRK	A1	West Commons (Food Service Mgt. Prog.)	WC	E5
Hacomb & Fitness Club	ROT	STR	Public Center (Financial Aid Office)	PCS	L8	Work Areas	WA	H9
General Services Building (1100, 1101, 1102, 1103)	STR	STR	Purbaugh Hall	PUR	F4	PLACES		
General Services Building (1104, 1105, 1106, 1107)	STR	STR	Ramen Center (FSU Bookstore)	RUC	C2	Commons Plaza (D.W. Ferris Statue)	CP	F2
General Services Building (1108, 1109, 1110, 1111)	STR	STR	Science Building	SCB	E5	East Intramural Fields	EIF	H5
GRO						PAN Fitness Course Start	PFC	F2
Health & Phys. Ed. Bldg (F-110 House)	HAL	D3				Tennis Courts	TC	O2, E6, D2
Health & Phys. Ed. Bldg (F-111 House)	HPE	E2				Top Tappan Field	TFP	D2
HEQ						West Intramural Fields	WIF	D6
Hobby Equipment Tech	HET	H6						
HFE								

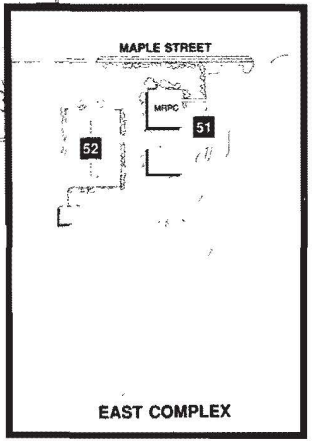
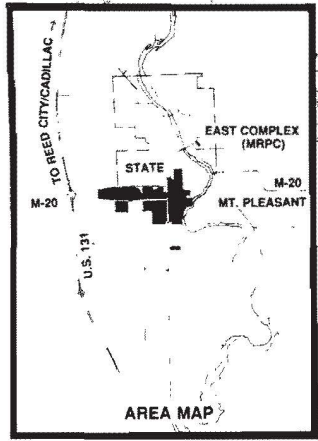
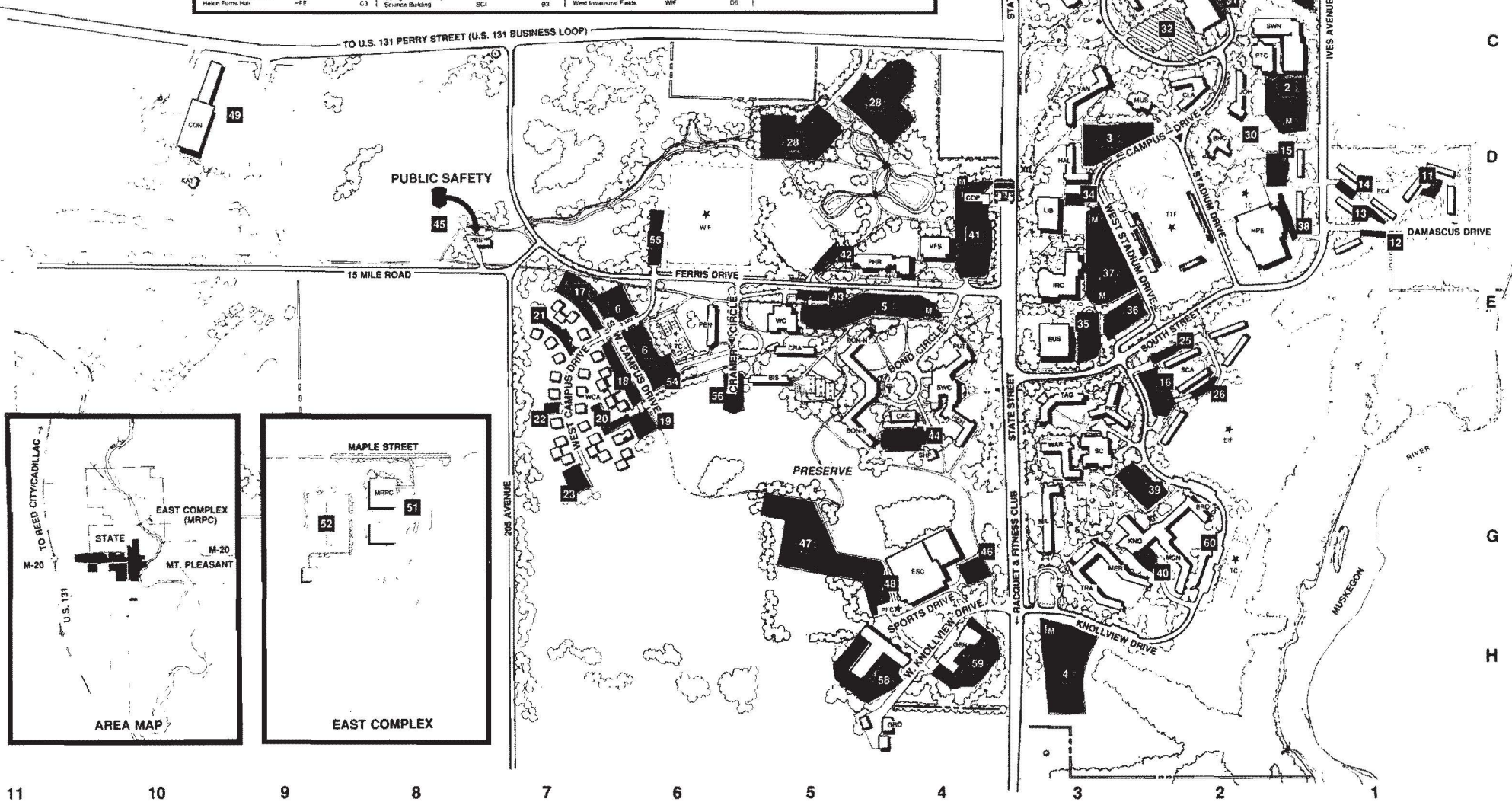
Pay Lot

Motorcycle Parking -

Meter Parking -

Handicap Parking - Only persons bearing State Handicapper permits are allowed to park in marked handicap spaces.

BUS STOP





FERRIS STATE UNIVERSITY
Big Rapids, Michigan 49307

Ferris State University is an Equal Opportunity/Affirmative Action institution. Ferris complies with all applicable laws, including Title IX of the Education Amendments of 1972 and the Rehabilitation Act of 1973, which prohibit discrimination in educational programs or admissions on the basis of age, sex, color, race, national origin, handicap or other prohibited matters. Inquiries may be addressed to Affirmative Action and Title IX Compliance Office, 210F Prakken Building, Ferris State University, 420 Oak Street, Big Rapids, MI 49307-2020.