

December 1999

Dear Colleague:

The *Ferris State University Fact Book 1999-00* is published for you, the students, faculty, staff, alumni, and friends of the University, who seek accurate information about Ferris. This project was conducted as a service to the University community by the Office of Institutional Research in the Division of Student Affairs. This ninth edition is a document that is designed to answer the most frequently asked questions about FSU.

It is with pleasure that we share the information with you. We encourage you to review this work and solicit your suggestions for improvement of future issues. We are currently in the process of putting this year's *Fact Book* on the Internet.

Our appreciation is extended to the many offices that assisted us with the development of the information, including Media Production's cover design. Special thanks goes to Nina Worth for her assistance in putting together this *Fact Book*.

Carol L. Maki
Director, Institutional Research

Mitzi A. Day
Research Analyst

Ferris State University
Division of Student Affairs
Office of Institutional Research
Big Rapids, MI 49307
(231) 591-3801

TABLE OF CONTENTS

GENERAL INFORMATION

Mission Statement	1
Facts and Figures (History/Campus Size/Academic Divisions).....	1
Location/Educational Programs/Admissions.....	2
Accreditation	3
Student Costs	5
Financial Aid/Housing.....	6
Career Resources/Computing & Telecomm. Facilities.....	7
Student Affairs/Athletics/Sports/Cultural Events.....	8
International Affairs/University Center for Extended Learning/Campus Media	9
Technology Transfer Center	10
Ferris-Grand Rapids/Library	11
Points of Interest.....	14
Gifts to the University.....	18
Ferris State University Calendar	19
Telephone Numbers (frequently used)	20
Educational Grants and Scholarships.....	21
MAGB Ferris State Faculty Honored.....	29
MAGB Ferris State Student Recipients.....	30

STUDENTS/ENROLLMENT

Enrollment of Resident Students by County	1
Enrollment of Non-Resident Students by State	2
Total Headcount Enrollment, Fall 1969-1999	3
FYES Enrollment Per FTE Faculty.....	4
5-Year Enrollment by College	5
Percent of Students by College	6
Enrollment Summary	7
Comparative Enrollment Report by College.....	8
Enrollment by Age (Undergraduate Students Degree Seeking)	9
Enrollment by Age (Undergraduate Students Non-Degree Seeking).....	10
Enrollment by Age (Graduate Students).....	11
Enrollment by Age (First Professional Students)	12
Average Age by Educational Level & Full-Time, Part-Time Status	13
Total Headcount Enrollment Compared to FTE	14
SCH/FTE/FYES	15
Ethnic Distribution.....	16
Ethnic Distribution by College.....	17
Enrollment by Program (Allied Health Sciences)	18
Enrollment by Program (Arts & Sciences).....	20
Enrollment by Program (Business)	22
Enrollment by Program (Education).....	26
Enrollment by Program (Optometry/Pharmacy)	28
Enrollment by Program (Technology)	29
Enrollment by Program (University College).....	34
ACT Scores	35

TABLE OF CONTENTS

DEGREES

Degrees Conferred by Program (Allied Health Sciences).....	1
Degrees Conferred by Program (Arts & Sciences)	2
Degrees Conferred by Program (Business)	3
Degrees Conferred by Program (Education).....	4
Degrees Conferred by Program (Optometry/Pharmacy).....	5
Degrees Conferred by Program (Technology).....	6
Degrees Conferred at FSU	8
Approved Programs	9

FACULTY/STAFF

Full-time University Staff by Job Category & Sex	1
Part-time University Staff by Job Category & Sex	2
Total University Staff by Job Category & Sex	3
Distinguished Teacher Awards	4

ORGANIZATIONAL CHARTS

Board of Trustees.....	1
Board of Trustees/Executive Division	2
Academic Affairs Division.....	3
Office of Academic Affairs.....	4
Academic Affairs Division/College of Allied Health Sciences	5
Academic Affairs Division/College of Arts & Sciences	6
Academic Affairs Division/College of Business.....	7
Academic Affairs Division/College of Education	8
Academic Affairs Division/Library and Instructional Services	9
Academic Affairs Division/Michigan College of Optometry at F.S.U.	10
Academic Affairs Division/College of Pharmacy	11
Academic Affairs Division/College of Technology.....	12
Academic Affairs Division/University Center for Extended Learning.....	13
Academic Affairs Division/University College	14
Office of Vice President for Administration and Finance Division	15
External Affairs Division	16
Student Affairs Division.....	17
Student Affairs Division/Enrollment Service.....	18
University Advancement and Marketing Division	19

TABLE OF CONTENTS

ALUMNI

Alumni Listing by State.....	1
Alumni by College	2
Placement Rates	3
Annual Salaries for Associate Degree Graduates for 1997-98	4
Annual Salaries for Doctorate, Master, and Bachelor Degree Graduates for 1997-98	5
Recipients of Alumni Awards	6

BUDGET

Summary of 1999-2000 Tuition/Fees & Room/Board.....	1
FY 1999-2000 General Fund Operating Budget	2
Revenue Summary.....	3
Expenditure Summary	4

FACILITIES

Summary of Facilities Owned or Rented by FSU (Non-General Fund).....	1
Summary of Facilities Owned or Rented by FSU (General Fund)	2
Ferris State University Campus Map	3

General Information

MISSION STATEMENT

Ferris State University will be a national leader in providing opportunities for innovative teaching and learning in career-oriented, technological and professional education.

FACTS AND FIGURES

HISTORY

One of Michigan's 15 public universities, Ferris State University is recognized for its career-oriented educational programs that are designed to meet the technology and work force demands of business and industry, the health-care professions, and society in general through applied research and practical education. Founded in 1884 on the concept of providing students with marketable skills, Ferris was established by Woodbridge N. Ferris (1853-1928), a distinguished Michigan educator and politician who served two terms as the state's governor and was elected a United States senator. Ferris was a private institute until 1950, when it joined the state higher education system. The college obtained university status in 1987.

CAMPUS SIZE 600 acres

ACADEMIC DIVISIONS

- College of Allied Health Sciences
- College of Arts & Sciences
- College of Business
- College of Education
- Michigan College of Optometry at F.S.U.
- College of Pharmacy
- College of Technology
- University College

GENERAL INFORMATION

LOCATION

The Ferris State University campus is located in Big Rapids, a west-central Michigan city of approximately 12,600 in the vacation-recreation region. The campus is readily accessible by the US-131 expressway and state highway M-20. Big Rapids is 55 miles north of Grand Rapids and within 200 miles of Chicago and Detroit.

In an effort to keep pace with changing needs and advances in technology, the Ferris campus has been updated and renovated over the years. The 600 acres of rolling hills along the western bank of the Muskegon River is dotted with 114 modern campus buildings.

EDUCATIONAL PROGRAMS

Ferris offers more than 100 educational programs through the Colleges of Allied Health Sciences, Arts and Sciences, Business, Education, Pharmacy, Technology, Michigan College of Optometry at Ferris State University, and University College. These offerings lead to bachelor and associate degrees and certificates and master degrees in information systems management, career and technical education and criminal justice. Doctorate degrees in optometry and pharmacy are also offered.

Each college encompasses a cluster of related programs that are targeted to prepare students for specific careers. The colleges operate in facilities that have been specially designed and equipped to support their missions.

Ferris is a national leader in the development of the concept of laddering, which enables students to advance their careers by building on previous training. For example, an individual who has gained employment after completing a two-year degree may later seek career advancement by returning to Ferris and earning a bachelor degree. This concept also permits students to readily transfer into Ferris programs.

ADMISSIONS

Ferris State's diverse curricula allows it to maintain the tradition of admitting most mature, serious-minded applicants. Admission to certain programs must depend upon consideration of the applicant's qualifications for such a program. Specific program requirements are listed in the University catalog.

GENERAL INFORMATION

FERRIS STATE UNIVERSITY ACCREDITATION

<u>Accreditation/Approval Agencies</u>	<u>Academic Program/Service Area</u>
American Council on Pharmaceutical Education	Pharmacy, 1939/1991-92 B.S. 1993-94 Pharm.D. (began 1990)
Council on Optometric Education	Optometry, 1999
American Dental Association/Commission on Dental Accreditation	Dental Hygiene, 1967/1992/1999
National Environmental Health Sciences Protection Accreditation Council	Industrial and Environmental Health, 1972/1990
Committee on Allied Health Education and Accreditation	Medical Record Administration, 1978/1993 Medical Record Technology, 1975/1993
National Accreditation Agency for Clinical Sciences	Medical Laboratory Technology, 1978/1994 Medical Technology, 1978/1994
Joint Review Committee on Education Programs in Radiologic Technology	Radiography, 1972/1992/1997
Joint Review Committee on Educational Programs in Nuclear Medicine Technology	Nuclear Medicine Technology A.A.S. 1976/ 1992/1997 B.S. 1978/1992/1997
Commission on Opticianry Accreditation	Opticianry, 1992
Michigan Board of Nursing	Nursing - A.A.S. Degree, 1969/1992
National League for Nursing	Nursing - B.S.N. Degree, October 1988/1997
State Board of Accountancy	Accountancy (approved by State Licensing Bureau)
American Bar Association	Legal Assistant, 1978/1988/1995
Accreditation Board for Engineering and Technology	Surveying Engineering, 1987/1993 Electrical/Electronics Engr. Tech. 1995 Mechanical Engineering Tech. 1997

GENERAL INFORMATION

ACCREDITATION CONT.

State Approval Agency for the Department of Education and the Dept. of Veterans Affairs, Michigan Department of Education	Education and Training of Veterans Annual review/approval for veteran benefits
Michigan Department of Education/Michigan State Board of Education	Teacher Education (approved by State, not accredited)
American Council for Construction Education	Construction Management, 1993
Michigan Commission on Law Enforcement Standards	Criminal Justice – Law Enforcement Specialist
Michigan Corrections Officers' Training Council	Criminal Justice - Corrections
Bureau of Regulatory Services Division of Child Day Care Licensing	Tot's Place (child care center)
Council on Social Work Education	Social Work, 1989/1995
American Chemical Society/Chemical Technology Program Approval Service	Industrial Chemistry Technology, 1996
International Facility Management Association	Facilities Management, 1996
Joint Review Commission on Educational Programs in Respiratory Therapy	Respiratory Care, 1975/1991/1997
Association of Collegiate Business Schools and Programs	College of Business Programs (candidate for accreditation 1998)
NAMBI (National Affiliated Music Business Institutions)	Music Industry Management
Accrediting Council for Collegiate Graphic Communications	Printing and Digital Graphic Imaging (candidate 1999) Printing Management (candidate 1999)
National Automotive Technician Education	Auto Service, GM, Ford, Chrysler (candidate 1999)
National Recreation and Parks Association/ American Alliance for Leisure and Recreation Accreditation Council	Recreation Leadership and Management

Source: Academic Affairs

GENERAL INFORMATION

STUDENT COSTS

The average annual cost for a Michigan resident to attend Ferris (based upon 2000-00 rates), including tuition, room and board, fees, estimated academic and personal expenses, is \$11,317.

1999-00 Costs	Semester	Year
Undergraduate (Michigan resident)		
Tuition (12-16 credit hours)	\$2,059.00	\$4,118.00
Room and Board (19 meal plan)	\$2,555.00	\$5,110.00
Sub Total	\$4,614.00	\$9,228.00
Books and Supplies (estimate)	\$400.00	\$800.00
Personal Expenses (estimate)	\$606.00	\$1,212.00
*Refundable Fees	\$38.50	\$77.00
Total Expenses (estimated)	\$5,658.50	\$11,317.00

*If requested, the Racquet Facility fee, Student Activity fee and Health Center fee will be deleted from the student's account. Cash refunds will only be granted for the Racquet Facility fee and the Student Activity fee if the student's account is paid in full.

Undergraduate (non-resident)		
Tuition & Fees	\$4,401.50	\$8,803.00
Undergraduate (non-resident MSEP)**		
Tuition & Fees	\$3,127.00	\$6,254.00

Part-time Student (1-11 credit hours)	
Michigan Tuition	\$172 per credit hour
Non-Resident Tuition	\$366 per credit hour
Non-Resident MSEP**	\$258.00 per credit hour
Graduate Student	
Michigan Tuition	\$230 per credit hour
Non-Resident Tuition	\$470 per credit hour
Non-Resident MSEP	\$345 per credit hour

**Students are eligible for the MSEP (Midwest Student Exchange Program) rate if they live in one of the following states: Illinois, Indiana, Kansas, Minnesota, Missouri, Nebraska, Ohio, Wisconsin. Not available for students enrolled in Doctor of Optometry, Doctor of Pharmacy, Pharmacy B.S. or Professional Golf Management.

Professional School Tuition

(Doctor of Optometry & Doctor of Pharmacy)

Michigan Resident	\$4,367.00/semester	\$8,734.00/year***
Non-Resident	\$8,941.50/semester	\$17,883.00/year***

***NOTE: The tuition for fourth professional year students in the Doctor of Optometry program is \$13,101 for Michigan residents, \$26,824.50 for non-residents. The year runs all three semesters.

Family Apartments	12 month contract
One Bedroom	\$5,078.00
Two Bedroom	\$5,656.00
Two Bedroom (townhouse)	\$6,235.00
Three Bedroom (townhouse)	\$6,813.00

Alternate Meal Plan

Room and Board (12 meal plan) \$4,864.00

Other meal plans available for non-traditional and deluxe halls.

GENERAL INFORMATION

FINANCIAL AID

More than 70 percent of the students presently enrolled at Ferris State receive some type of financial aid through federal, state and Ferris programs, including scholarships, grants, loans and student employment. Ferris State University awards more than \$45 million in student aid annually.

Most financial aid is based on need and is intended to assist students whose families cannot pay all or perhaps any of the college costs. Information on financial aid programs may be obtained by contacting the Office of Scholarships and Financial Aid at 1-800-940-4AID.

HOUSING

Ferris State University residence halls provide students with convenience and the opportunity to pursue their studies in an environment that supports the academic mission of the University. Various halls are designed to cater to specific interests and needs. Among them are halls for non-traditional students, a substance free hall, smoke free hall, private room options, apartment style hall, and the Honors Hall. All residence halls offer challenge and a variety of growth experiences including considerable employment opportunities.

Special services within the halls include mini-computer labs and individual student rooms that are data connective and have television, RHA movie channel, washers and dryers, cooking capabilities, direct long distance dialing, referral desk and night security. Social, recreational and educational programming are routinely provided. Each hall has a hall director and student resident advisors.

The University apartments consist of the west campus townhouses, and the east and south complexes. The west campus complex has 150 two bedroom and 50 three bedroom unfurnished townhouses which are designed to provide a family atmosphere to students with families. Handicapped accessible townhouses are also available in which the entire living area is on a mall level, with full basement and laundry facilities.

The east and south complexes consist of 188 one and two bedroom units. They are designed for married couples with no more than one child and have laundry facilities in each building.

All apartments provide computer network connections to access the Internet, library and the University mainframe. Telephone and cable television and cable television connections are also provided. A community center in the center of the west campus complex houses a computer lab, meeting rooms and a large multipurpose room where educational, social and children's programs are held.

GENERAL INFORMATION

CAREER RESOURCES AT FSU

A Ferris State University education is complimented by the array of career resources available including Career Services, educational counselors, the Educational and Career Counseling Center, and UNIV 102, a course in career and educational planning.

CAREER SERVICES

The Career Services Office assists students with their career and job search. The office maintains a career and employer library for students exploring career options and employment opportunities.

Career connections, a state-of-the-art internet-based software package gives students/alumni their own personal web site to create/upload their resume and forward to Career Services for inclusion in the Web Resume Book. Students/alumni can view jobs on the Web Job List, sign up for on-campus interviewing on line or view their own schedule of events to keep on track with their job search. Annual studies of employed alumni indicate that 91% are employed in occupations related to their major field of study at Ferris and 98% of graduates are working or continuing their education. Ninety-nine percent of graduates seeking employment found jobs. All seven colleges had a 95% or higher placement rate. Job search workshops, walk-in resume review hours and mock interviews help give students both immediate and comprehensive assistance in meeting their career goals.

EDUCATIONAL AND CAREER COUNSELING

Educational counselors provide information on all academic programs in Ferris' eight colleges. These counselors are located in the Educational and Career Counseling Center, and in the colleges of Allied Health Sciences, Arts and Sciences, Business, Education and Technology.

In addition to providing academic counseling, the Educational and Career Counseling Center (ECCC) offers assistance in making career choices. Finding the right career depends on several factors. Two strong factors are personality and interests. Students can receive an evaluation in these areas by taking the Myers Briggs Type Inventory and the Strong Interest Inventory through the ECCC in ASC 1048. An educational counselor interprets the results with the student and provides information on careers that are aligned with the student's personality and interests.

Career undecided students also benefit from UNIV 102, Career and Educational Planning, offered by the faculty of University College.

COMPUTING AND TELECOMMUNICATIONS FACILITIES

A high-speed, wide-area network provides broad campus access to academic servers, the Internet, and other computing resources such as Timme Library. The University has installed Ethernet connections in each of the 3,000 residence hall rooms and student apartments on campus. Every residence hall is equipped with a computer lab. In addition, there are large computing laboratories available to students in various locations on the Ferris State University campus. The Instructional Technologies Department provides media support for classroom instruction and facilitates distance learning activities to off-campus locations. The Telecommunications Department offers a variety of voice, video and data services. The University's IBM enterprise server supports online processing for academic and administrative users. Lotus Notes electronic mail and calendar service is available to all students, faculty and staff. The Ferris Web site (<http://www.ferris.edu>) provides information about the University and is used to support student Web services.

GENERAL INFORMATION

STUDENT AFFAIRS

The division of Student Affairs provides a variety of services for students through the following departments: Birkham Health Center, Career Services, Counseling Center, Enrollment Services, Minority Affairs, Rankin Student Center, Student Leadership & Activities, and University Recreation. All of these departments work with students to enhance their university experience.

The Office of Student Leadership & Activities helps students use and grow their talents through campus and community involvement. To keep students involved and connected to the University, there are more than 170 registered student organizations (RSOs), including sports clubs, Greek-letter organizations, religious groups, academic societies and professional associations. The Student Volunteer Center refers hundreds of Ferris students each year to area agencies seeking volunteers. A variety of leadership programs are offered throughout the year to help students develop marketable leadership and management skills.

ATHLETICS

The Ferris State University Bulldogs are members of the National Collegiate Athletic Association (NCAA). Varsity teams compete in the Central Collegiate Hockey Association (NCAA Division I) in ice hockey, the Great Lakes Intercollegiate Athletic Conference (NCAA Division II) in all other sports.

Ferris students participate in 15 varsity sports: golf, tennis, basketball, track, cross country for men and women; softball, soccer, and volleyball for women; hockey and football for men.

INTRAMURAL AND RECREATIONAL SPORTS

Annually, more than half of the student body participates in organized recreational sports activities, including extensive intramural and club sport programs. Other students participate in informal recreation activities. Ferris provides ample facilities for athletics and recreation, including a Student Recreation Center with pool, weight room, basketball and volleyball courts and indoor track; a golf course; a sports complex including full and half-size ice rinks, additional basketball and volleyball courts; racquetball courts and indoor and outdoor tennis courts.

CULTURAL EVENTS

Concerts by Ferris State Music Center organizations such as the West Central Concert Band, Chamber Orchestra, Jazz Ensemble, Concert Choir, and Ferris Wheels (men's glee club), and productions of the University Theater are augmented by appearances of professional music, drama and dance organizations and other performing arts groups.

The Ferris Art Gallery features exhibits of paintings, prints, photography, sculpture and crafts, as well as special exhibits featuring leading Michigan artists, FSU faculty and students.

The Arts and Lectures Committee offers a schedule of lectures, concerts and films, while Entertainment Unlimited presents pop/rock and comedy concerts and other events of a contemporary nature.

The Center for International Education's "International Festival of Cultures" brings the world to Big Rapids with students, faculty, staff, and community members presenting cultural displays, performances, and food from more than fifty countries worldwide.

GENERAL INFORMATION

INTERNATIONAL AFFAIRS

The office of International Affairs is located on the third floor of Bishop Hall. It is responsible for the administration of international programs. The office has four primary areas: 1) the Intensive English Program which provides international students with training in English to prepare them for entering the University; 2) Study Abroad and International Exchange Programs, allowing Ferris students to study in destinations throughout the world; 3) advising of all international students, and assisting departments in bringing international scholars to campus; 4) recruitment and admissions of all international students.

UNIVERSITY CENTER FOR EXTENDED LEARNING

Emerging technologies, the rapid proliferation of knowledge, and a global economic environment characterized by continuous change, make lifetime access to the most current education and training opportunities critical for individuals and industries throughout Michigan. The mission of the *University Center for Extended Learning* (UCEL) is to facilitate the rapid transfer of knowledge and technology from the university to the workplace and to provide first-class education and training to location-bound and non-traditional students throughout the state. The objective of UCEL is to provide the people of Michigan with marketable and updated skills for a changing society.

UCEL strives to realize its mission and objective by supporting and working with faculty in the development of innovative courses and workshops, utilizing distance learning technologies and other means for delivering the latest information to those who need it, and by forging educational partnerships with business and industry. UCEL programs extend a wide range of opportunities:

- Off-campus credit courses and degree programs are offered at strategic sites throughout the state via a variety of delivery methods and are designed to meet needs of the adult learner. These programs are administered through regional centers in Traverse City, Flint, Dowagiac/Niles and Muskegon.
- Conferences and professional development programs offer opportunities for continuing education and professional growth to individuals of all ages and backgrounds.
- The Technology Transfer Center provides business and industry with innovative, customized training in new and emerging technologies.
- Non-credit programs provide high quality, innovative, cost-effective and customer-focused training and consulting solutions to meet the management and professional needs of business, industry, non-profit organizations, and government agencies throughout Michigan.
- Grant supported programs provide service to a wide range of constituents.

CAMPUS MEDIA

Ferris offers students a variety of media, including a campus newspaper and local cable system (Channel 7) *The Torch*, which is published twice weekly, informs students of University news, events, and other related campus issues. FSU-TV Cable 7 serves the campus and community with educational and public service television programming. The *FYI* is an internal newsletter published weekly for faculty and staff with limited student distribution, and the *Crimson & Gold*, published three times yearly, is aimed at keeping alumni and other key audiences informed. Some of the colleges and programs on campus also publish their own alumni publications.

GENERAL INFORMATION

TECHNOLOGY TRANSFER CENTER

Ferris State University's Technology Transfer Center (TTC) has been involved in partnerships to help businesses with solutions to training and industrial process needs since 1984. Over 1,000 companies have taken advantage of the skills and facilities offered.

TTC is known for its ability to partner with business and industry to tackle issues related to custom training, process consulting, certification, and assessment. Through the establishment of institutes, training and certification needs can be solved at a state and national level. Work is accomplished by contracting with the TTC to create the proper partnership between the company, Ferris State University faculty and staff, outside resources, and students to complete the project goals.

TTC offers custom assessment and technical training solutions to company-specific product, process, and equipment for return on investment of training dollars. Training can be delivered at the training facilities located at the main complex in Big Rapids, or at the company's plant site.

TTC facilities are air conditioned and equipped with audio visual equipment. Computers and related equipment may be provided. Training on hundreds of technical topics may be serviced. Training may also involve participant assessment and certification as required. TTC has invested in the future of training by creating the capacity for development of computer interactive training for business and industry.

In order to keep cost down (through long term delivery methods) and keep training value high (while providing a customized training program) TTC may create custom or standard training modules, which utilize computer interactive theoretical training combined with hands-on applied training. This type of training has been successfully completed for Evert Products-Extron to teach plastic injection mold operation, D-M-E Company, Inc. to teach injection mold base technology, and custom automated production line training for FIAMM Technologies Incorporated.

New trends in industry are showing that the new workforce requires more technical training and employers are wanting to pay for skill, not time-in-task. Therefore, certification tools have become an important part of TTC's offerings. A good example of certification is the national training and assessment programs developed for the Rubber Manufacturers Association, Molding Operator training packages.

In the area of grant writing services, TTC has been successful in helping gain support for industrial and business projects. In the past ten years, TTC has managed over \$2.5 million in grants. Through the State Workforce Commission-Economic Development Job Training Grants, seven companies have obtained a total of over \$750,000 in grants to provide needed training to upgrade their workforce. The providing of delivery services has also been completed in many community college held grants.

The Technology Transfer Center may provide custom and institute-based training and certification, grant writing services, computer interactive training and multimedia services, and manufacturing consulting and assessments to meet the needs of business and industry.

The Technology Transfer Center is located at 1020 East Maple Street near the Big Rapids Industrial Park. Phone 231-591-5800, Fax 231-796-1448.

GENERAL INFORMATION

FERRIS-GRAND RAPIDS

Ferris-Grand Rapids campus includes the Applied Technology Center at 151 Fountain St. NE and the Kendall/Ferris building at 17 Fountain St. NW Both facilities are conveniently located in downtown Grand Rapids.

The ATC offers 170,000 square feet of instructional and office space including computer, computer aided design, electronics, manufacturing, materials testing, plastics and heating, air conditioning and refrigeration labs. In addition, the ATC houses an auditorium, banquet and teleconferencing facilities.

In 1996 the Board of Trustees of Kendall College of Art and Design voted to merge Kendall with Ferris State University, a process that will be completed in August 2000. This decision initiated a greater commitment on behalf of Ferris to expand programming in Grand Rapids and resulted in the purchase of an additional facility at 110 Ionia NW.

The Kendall/Ferris building offers classrooms, gallery space, and IBM and MAC computer lab facilities and houses the Kendall/Ferris bookstore and programs of Kendall College of Art and Design.

Kendall College of Art and Design educates its students to be leaders in the arts. It provides a dynamic learning environment that prepares its students to be “working artists” and to achieve professional careers in art and design.

Today Ferris-Grand Rapids offers more than 25 professional development certificate, associate, bachelor and master degree programs and serves as a model for Ferris’ growth across the State of Michigan.

LIBRARY AND INSTRUCTIONAL SERVICES (LIS)

Serving the University community, Library and Instructional Services (LIS) offers access to vast collections onsite and through rapidly changing networks, databases and online services including Internet/Web in support of the institutional mission. LIS is committed to helping all users develop the necessary information access knowledge and skills through its instruction/reference program to become successful practitioners in their chosen careers as well as respected citizens.

Liaisons/Subject Specialists – Through the LIS liaison program, departments/schools/colleges are assigned a librarian/information specialist who works with the unit’s faculty/staff in the areas of library instruction including Internet/Web workshops, program planning/review, materials acquisition, distance education, research consultations, assessment and other related reference services to meet curricula/program needs.

Information Literacy – Experience of classroom and LIS faculty alike indicate that systematic library instruction in information access procedures can enhance the quality of work students produce. The information literacy program starts with the basics in FSUS courses and becomes more advanced as students progress in their college experience.

Individual Assistance – Since emerging technologies create constant change, and a continual influx of new materials exists, traditional and electronic (netref@lib01.ferris.edu) accessible (<http://library.ferris.edu>) reference services are available. Scheduling an appointment with a subject-specialist librarian for individual assistance is another option for user convenience.

GENERAL INFORMATION

LIBRARY AND INSTRUCTIONAL SERVICES (LIS) CONT.

Distance Learning – Provision is made for students enrolled in off-campus courses to use the Ferris Libraries' sources and services including personal assistance from subject-specialist librarians and direct document delivery of materials held. Access to the online catalog is available from the regional centers and home computers.

Facilities, Computers and Collections –

- The University libraries, which consist of the Abigail S. Timme Library and a branch facility, the Health Sciences Library, house collections in excess of ¾ million books, periodicals, Michigan and U. S. government documents, research reports, media, and other materials. This number excludes collections like ERIC where individual items are not added to a central database. Taking this factor into account, the overall number will surpass 2 million items.
- A new digitalized library, FLITE (Ferris State University Library for Information, Technology and Education), which will enhance the University's leadership role in teaching, learning and technology, is scheduled to open in 2001.
- For government information resources, the Libraries are one of three Michigan sites designated as a Patent & Trademark Depository Library, a depository for U.S. Bureau of Census and state of Michigan publications, and share this status with Northwestern Michigan College for other federal documents.
- University Archives functions as the collection and organizational point to preserve information related to Ferris State's history.

Information Accessibility – The Libraries' local area network (LAN) features Web-based database access, CD-ROM products, the Ferris online catalog (which also lists Kendall College of Art & Design Library resources) and Internet/Web. It is accessible in computer labs, residence halls and offices throughout campus. Except for occasional maintenance, the LAN is operational on a 24/7 basis.

Circulation/Document Delivery – In addition to borrowing books and government documents, and/or photocopying/printing/downloading/e-mailing periodical articles, Ferris State students, faculty and staff may request to use item(s) from another library/information center. To fill these requests, the Interlibrary Loan/Document Delivery staff use state-of-the-art technologies and sources.

GENERAL INFORMATION

Library and Instructional Services (LIS) 1998-99 Statistics

Services

Hours Open	88/week	
Attendance Main Library		149,461
Attendance Health Sciences Library		34,803
Computer Usage (Individualized Learning Center)		10,179
Library Instruction Sessions		263
Students Participating in Sessions		5,203
Reference, Instructional & Directional Transactions		33,773
Circulation		180,002
Interlibrary Borrowing		1,712
Interlibrary Lending		4,768
Materials Requests (off-campus students)		147

Access/Holdings

Book Titles		191,582
Periodical Subscriptions (paper & microform)		2,002
Full-text Periodical Databases		8
U.S. and Michigan Government Document Titles		73,297
Web-based Databases		65
CD-ROM databases		14
Manuscripts (linear feet)		891.1
Public Computer Workstations		47

Source: LIS

GENERAL INFORMATION

POINTS OF INTEREST

Alumni Building (1929) - The oldest building on campus, it contains administrative offices, recreation facilities, and faculty offices and classrooms for the College of Arts and Sciences.

Arts and Sciences Commons (1996) - This building houses faculty and administration offices for the College of Arts and Sciences and the University College, student academic support services such as tutoring, the Writing Center, the Card Wildlife Education Center, the MOISD Math/Science/Technology Center, an educational counseling center, and a number of computer laboratories. It also contains art works by Michigan artists and "The Visionary," a major mural by resident artist Robert Barnum.

Automotive Center (former Technical and Applied Arts Center) (1956) - Comprises the instructional and lecture facilities for automotive services, automotive body, and auto and heavy equipment management. Several of the automotive programs offer associate and bachelor degrees.

Business Building (1970) - Houses the auditorium, classrooms and offices of the College of Business. Extensive terminal and mainframe computer facilities include one of the state's largest "library concept" microcomputer laboratories used for educational purposes.

Bishop Hall/College of Education (1967) - Built as a residence hall, it was remodeled in 1986 to house the College of Education administrative offices and classrooms and the Intensive English program. It also houses the office of the President, Academic Affairs, and Budgetary Planning.

Construction Technology Center (1962) - Provides lecture facilities for the energy systems technology and construction engineering technology program areas.

Creative Arts Center (1965) - This building houses the studios, classrooms, and faculty offices needed for the Studio Arts in the College of Arts and Sciences.

Ewigleben Sports Complex/Ice Arena - Comprises two indoor ice rinks and a recreational wing with facilities for intercollegiate hockey, recreational hockey and skating, basketball, and volleyball, all completed in 1975. An addition completed in 1981 includes a combatives room, fitness and sports medicine facilities and a mini-arena.

G. Mennon Williams Auditorium (1962) – This facility houses FSU's theater program and also serves as the major multipurpose auditorium for the FSU campus. With seating for 1,799, Williams Auditorium hosts musical, dramatic, cultural, and convocation events throughout the year. It also is available for public rental use when scheduling allows.

Heavy Equipment Center (1987) - A 52,000-square-foot building accommodating students in the heavy equipment and auto programs. The HEC building is the largest facility in the country dedicated to training heavy equipment and heavy duty engine technicians.

GENERAL INFORMATION

Holiday Inn Hotel and Conference Center (1993) - The facility is located adjacent to the Katke Golf Course and overlooks the campus. The complex houses 16,772 square-feet of meeting facilities, 118 guest rooms, banquet facilities and a restaurant. The conference facilities are used for continuing education activities, conferences and workshops.

Instructional Resource Center (1969) - Contains large lecture halls, distance learning room, and media services for the whole campus.

Katke Golf Course (1975) - Katke is a full service 18 hole championship golf course that measures 6,729 yards from the back tees, 6,108 from the middle tees and 5,344 from the forward tees. Our state-of-the-art practice facility includes 100,000 square feet of grass teeing space, six target greens, a 10,000 square foot practice putting, chipping and bunker area. The entire practice facility is encompassed by a three hole practice course which includes two par 4's and a par 3. Our full service clubhouse sits atop the highest point in Mecosta County, the golf shop is stocked all year with merchandise to satisfy all of your golfing needs. Our staff includes two PGA Golf Professionals available for clinics, video lessons and club fittings by appointment.

Michigan Art Walk (1996) - The Ferris Renaissance is a 20-year vision for aesthetically improving the Ferris State University campus. The Michigan Art Walk is one component of Ferris Renaissance whereby original pieces of art work created by Michigan artists are installed throughout campus and linked by a meandering pathway, ultimately reaching into the Big Rapids community. The inaugural sculpture of the Michigan Art Walk, by Ann Arbor-based artist Barron Naegel, was installed in the fall of 1996. Also installed as part of Ferris Renaissance in the fall of 1996 were a wall sculpture by Daniel Roache, under the auspices of the Presidential Art Collection, and the main panel of Robert Barnum's "The Visionary," which depicts the history of Ferris State University. Ferris Renaissance continued with the unveiling of "Escape," an outdoor sculpture by R. Farrington Sharp, on October 17, 1997. The side panels of "The Visionary" were unveiled on February 20, 1998, completing Barnum's triptych. "Totem Stack," a sculpture by Ferndale artist Albert Young, was unveiled on May 7, 1998. "Muse" by Irina A. Koukhanova is the latest addition to the Michigan Art Walk, and was dedicated on November 19, 1998.

Music Center (1962) – The Music Center is located at the heart of the campus at the foot of the Carillon Clock Tower on the south end of the quad "green space" and just north of Top Taggart Field (football stadium). This facility offers rehearsal and practice space for all varieties of ensembles. The band room can accommodate groups of up to 100 musicians and the Choral Room provides room for 60 musicians. Private practice rooms are available and are ideal for individual practice or small groups of 2-3 persons. Each practice room contains an acoustic piano. The Humanities Department as a service to currently enrolled students maintains these instruments (regular tuning, etc.) The piano lab has 12 stations (full size keyboards) that are used for group instruction and practice for those enrolled in music classes. The music faculty and ensemble director's offices are also in the Music Center.

National Elastomer Center for Rubber and Plastics Technology (1998) - This state-of-the-art facility was opened in September 1998, the only one of its kind in the nation. Elastomers are a combination of rubber and plastic compounds used in a variety of applications in the automotive, defense, appliance and other industries.

GENERAL INFORMATION

Pennock Hall/College of Optometry (1968) - Built as a residence hall, it was renovated in 1977 to serve as the permanent home for the Michigan College of Optometry at F.S.U.

Pharmacy Building (1972) - Designed to house all operations of the College of Pharmacy, including specialized laboratories and the model pharmacy, and also contains an antique pharmacy exhibit.

Presidential Art Collection (1996) - Daniel Roache was chosen as the first contributor for a collection featuring commissioned works by Michigan artists honoring Ferris presidents. His aluminum, wall-mounted sculpture representing the seven academic colleges hangs in the Williams Auditorium lobby. A bronze bust of President Byron Brophy by sculptor James S. Hopfensperger, was dedicated on April 30, 1999. It is on display in the Timme Library.

Racquet Facility (acquired in 1980) - The facility contains tennis and racquetball courts and weight lifting and aerobics facilities for intramural and intercollegiate athletics and is open to the general public.

Rankin Center (1957) - Remodeled and updated in 1987, it is the hub of campus, housing the James L. Lundberg Bookstore, recreational facilities, offices for the student newspaper, student government and various other student organizations, catering/booking offices and the Ferris Art Gallery. On the administrative side, there are offices for minority affairs, student judicial services, student activities, career services, personal counseling, the vice president for student affairs and the dean of student life. Additional services include three dining facilities, meeting rooms and a large ballroom/banquet room.

Science Building - Originally built in 1956, remodeled and expanded in 1967, completely renovated in 1997, this building provides teaching auditoria, classrooms, and science laboratories for the College of Arts and Sciences, as well as the Rawlinson Observatory and Shattner Greenhouse.

Spathelf Center for Allied Health (1979) - This four-level structure contains the specialized classrooms, laboratories and offices for the students, faculty and administration of the College of Allied Health Sciences.

Starr Building (1961) - FSU's largest general classroom building, Starr was built in 1961 and completely renovated in 1995. It provides classrooms for the College of Arts and Sciences and University College, student lounges and study rooms.

Student Convocation Center/Wink Arena (1999) – The 42,000 square foot facility, located adjacent to the Ewigleben Ice Arena, will seat 2,400, including prime sections of chair-back seating. The building complex features an expanded lobby that adjoins the Ice Arena with a new pro shop, concession stands, and a display for the Bulldog Hall of Fame. This new center will serve as the home for the FSU men's and women's basketball programs, and will also be used for commencement exercises, major concerts, and special events.

Student Recreational Center (1998) - The former HPE/Wink Arena building was remodeled and reopened August 30, 1998. The facility gives students, faculty, and staff a modern gymnasium, weight room, aerobic room, exercise machines and elevated track. A student lounge, indoor swimming pool, spa, and 40-foot climbing wall was completed in 1999.

GENERAL INFORMATION

Swan Technical Center (1966) - Many College of Technology department offices, classrooms, and laboratories designed specifically for engineering technology instruction are located in this building.

Technology Transfer Center (TTC) (donated in 1984 by Hitachi Metals International) - This 9,000-square-foot building located off campus on Big Rapids' east side, contains a fully equipped multi-media computer laboratory, classrooms, a conference room and offices. (for more information see page 10)

Timme Library (1967) - The Abigail S. Timme Library, which bears the name of a Ferris alumna and benefactress, is a 57,000 square foot, three-level building situated in the heart of campus. As the campus information resource center, the Library offers full-scale information/reference/research assistance, instruction, onsite collections, Internet/Web access and other services. The Timme building will be converted into a Student Services Building when FLITE (Ferris Library for Information, Technology, and Education) is completed in 2001.

Tot's Place (instituted 1987) - Located on the first floor of Bishop Hall, it is the laboratory for the child development program. Tot's Place provides childcare for children of students and faculty/staff as well as Big Rapids community residents.

West Commons - Part of West Commons is dedicated to the Health Sciences Library. This library provides information/reference/research assistance, instruction, onsite collections, Internet/Web access and other services primarily in support of Allied Health, Optometry, and Pharmacy curricula/programs.

GENERAL INFORMATION

GIFTS TO THE UNIVERSITY

Directed by the Ferris faculty and staff, private giving to the University in fiscal year 1999 totaled \$5,807,967 including cash contributions of \$2,104,506 and in-kind gifts of \$3,703,461.

Contributions may be made in many ways:

- Phoenix Society: \$100,000 in cash or in-kind gifts or \$150,000 in irrevocable deferred giving (individuals or companies)
- Old Main Society: \$50,000 cash or \$75,000 in irrevocable deferred giving (individuals only)
- Founder's Club: \$25,000 in cash or pledge to be paid over 10 years, or \$75,000 irrevocable deferred gift
- Presidents Club: \$10,000 in cash or in-kind gifts payable over a 10-year period, or a \$35,000 life insurance policy, charitable remainder trust or by other irrevocable deferred arrangements (individuals only)
- Annual giving clubs: Dean's Club (\$500-\$999) with funding designated to a specific College or program
- Bulldog Club: Gifts designated to support athletic programs. Top Dog (\$1,000), Coach (\$500), Captain (\$250), Booster (\$100), friend (\$50)
- Gifts from alumni and parents
- Gifts from business and industry, including cash, equipment and materials
- Gifts and grants from foundations
- Matching gifts (companies or corporate foundations match their employees' gifts to Ferris from a one-to-one to a four-to-one ratio)
- Gifts in memory or in honor of individuals
- Gifts through the naming of Ferris State University as a beneficiary in estate plans

FERRIS STATE UNIVERSITY CALENDAR

Fall Semester, 1999

Aug. 26-27	Registration
Aug. 30	Classes begin
Sept. 6	Labor Day - no classes
Sept. 7	Classes resume
Oct. 20	Mid-term warnings due
Nov. 1	Last day for approved unqualified W grade
Nov. 25	Thanksgiving recess begins
Nov. 29	Classes resume
Dec. 10	Last day of classes
Dec. 13	Examination week begins
Dec. 17	Last day of examination week
Dec. 18	Fall Commencement

Winter Semester, 2000

Jan. 6-7	Registration
Jan. 10	Classes begin
Jan. 17	Martin Luther King Day - no classes
Mar. 4	Spring recess begins
Mar. 13	Classes resume
Apr. 20	Easter recess begins
Apr. 24	Classes resume
Apr. 28	Last day of classes
May 1	Examination week begins
May 5	Last day of examination week
May 6	Spring Commencement

Summer Semester, 2000

May 15	Registration
May 16	Classes begin
May 29	Memorial Day - no classes
May 30	Classes resume
July 3-4	Independence Day recess - no classes
Aug. 10	Last Day of Summer Semester Classes

GENERAL INFORMATION

TELEPHONE NUMBERS (frequently used)

The telephone number for the Ferris State switchboard is (231) 591-2000, the telephone operator can assist you. Most colleges, departments and offices also have their own numbers. Some frequently called numbers are listed below:

Academic Deans Offices

College of Allied Health Sciences	591-2269
College of Arts and Sciences	591-3661
College of Business	591-2420
College of Education	591-3648
Michigan College of Optometry at F.S.U.	591-3703
College of Pharmacy	591-2254
College of Technology	591-2898
University College.....	591-2428

Student Services

Admissions.....	591-2100
Assessment Services & Enrollment Research....	591-3628
Business Office	591-2125
Career Services.....	591-2685
Financial Aid.....	591-2110
Orientation.....	591-2105
Registrar	591-2790
Residential Life (Housing).....	591-3745

General

Alumni Relations.....	591-2346
Athletic Department	591-2860
Library	591-3602
University Center for Extended Learning.....	591-2340
Public Safety	591-5000
Rankin Center	591-5916
Student Activities.....	591-5936
University Advancement & Marketing.....	591-3815

World Wide Web Homepage Address - <http://www.ferris.edu/>

The 1999-2000 Fact Book will be available at this address –
<http://www.ferris.edu/htmls/othersrv/factbook/homepage.htm>
go to Ferris' homepage, select Other Services, select Ferris Fact Books

EDUCATIONAL GRANTS AND SCHOLARSHIPS

FEDERAL

The Federal Pell Grant
The Supplemental Educational Opportunity Grant

STATE

The Michigan Educational Opportunity Grant Program
The Michigan Adult Part-Time Grant Program

INSTITUTIONAL

Founder's Scholarship
President's Scholarship
Dean's Scholarship
Valedictorian/Salutatorian Award

INSTITUTIONAL GRANTS AND SCHOLARSHIPS

1968 Football Scholarship
Allen and Hanburys Scholarship Award
Alumni Scholarship
Amer Fed of State, County & Municipal Employees
American College of Health Care Admin's
American Society for Quality Control Scholarship
American Welding Society-Detroit Section Award
Amerikam Scholarship
Andersen Consulting Exe. in Education
Architectural Building Products Scholarship
ASHRAE - American Society of Heating, Refrigeration & Air Cond. Engrs.
Tommy Armour Golf Company Scholarship
The Blanche E. Arnold Scholarship
Athletic Grants (Individual Sports)
Automotive Service Industry Association Scholarship Fund
Avery Silent Supporter Alumni Award
Avon Golf Grip Scholarship
Bausch and Lomb Excellence in Academic Achievement Scholarship
The W.J. Beegle Memorial Scholarship
Helen Bennett Memorial Award
Bernell Clinical Optometry Award
The P. Berry Intensive English Scholarship
Ken Betz Automotive Service Scholarship
Owen Bieber Scholarship
Thomas Bingman Memorial Scholarship
J. L. Bishop Surveying Scholarship
George Marcus Bowlby Scholarship for Non-traditional Students
Dick Brammer Scholarship

GENERAL INFORMATION

INSTITUTIONAL GRANTS AND SCHOLARSHIPS CONT.

Robert J. Brauer Memorial Accountancy Award
Curtis Brown Scholarship
Burroughs Wellcome Company Scholarship Awards
R.C. Burtch Surveying Scholarship
Col. of Business Student Emergency Loan Fund
College of Business Memorial Scholarship Fund
Robert Byrd Scholarship
Campus Safety Association Scholarship
Cap Reg. Comm. Fund Scholarship
Cascade/Paragon Scholarship
John Celestino Endowed Scholarship
Brian Chapman Memorial Professional Golf Management Scholarship
Chrysler Apprentice Scholarship
The Elizabeth Claucherty Endowed Scholarship
Gilbert Cobb Scholarship
Computer Information Systems Faculty Award (CIS)
Frances Carnahan Chapman-Margaret Carnahan Court Scholarship
Alfred S. Cramer Memorial Accountancy Award
Creswell, Mary Scholarship
Cummings Scholarship
Daudi Book Scholarship
Davenport, O. Foundation
Stanley J. Dean Memorial
Delta Dental Fund
The William E. Dengler Memorial Pharmacy Scholarship
Dental Hygiene Alumni Scholarship
Disabled Student Scholarship
Wm. J. Donahue Vocal Music Endowment
Paul Douglas Teacher Scholarship Awards
DOW-Industrial Chemistry Technology Scholarship
J. P. Draugalis Endowment
Gregory Dreuth Memorial Scholarship
Dystra Food Service Scholarship
EDS Automotive/Heavy Equipment Management
Ewicleben, Esther Memorial Scholarship
Ewicleben International Student Endowed Scholarship
The Dean and Mrs. Ben Fairman Scholarship Fund
Steven Falcone Memorial Scholarship Award
The Federated Garden Clubs of Michigan Scholarship
Mary C. Feindt Surveying Scholarship
Ferris Grants-in-Aid
The C. Jerry Ford and Mary E. Ford Memorial Scholarship
FSC Scholarship
FSU Dining Service Scholarship
Farmers Insurance Group
Fenn & Associates
Finishmaster Automotive/Heavy Equipment Scholarship
Fonte, J. Prof. Tensch

INSTITUTIONAL GRANTS AND SCHOLARSHIPS CONT.

Ford Motor Company Scholarship
D. Froelich Memorial Scholarship
The Ernie Fuller Scholarship
Seymour Galina Grant
W.S. Garrison Living Scholarship
Harold E. Glass Pharmacy Student Assistance Fund
Golf Manufacturers and Distributors Association Scholarship
The James A. Gould Memorial Pharmacy Student Assistance Fund
Governors Career Scholarship
Grand Rapids Mech. Cont. Association
Susan Greene Memorial Scholarship
Edward M. Griffin Memorial Education Scholarship
HS Die Engineering, Inc.
Charles Hampton Scholarship
Ed Harris Memorial Scholarship
Mary Ann Hashimi Endowment
Heat, Vent, Air, Refrigeration Scholarship
Alan A. Heisler Memorial Scholarship (CIS Development-College of Business)
The Kurt Helthaler Endowed Memorial Ophthalmic Dispensing Award
Willis J. Heyl Award in Pharmacognosy
Hoexum Scholarship
Orville C. Hoffman, Jr. Endowed Scholarship
George N. Holcomb Memorial Scholarship Fund
Home Builders of Mecosta County
Hospitality Management Scholarship
John & Diana Hoyt Plastics Technology
Humiston-Keeling Scholarship Award
Hurst Mechanical, Inc./Refrigeration Engineering, Inc. Scholarship
Independent Printing Co., Inc. Annual Scholarship
Insurance Scholarship
Intensive English
International Association of Plastics Dist. Scholarship
Chas. Jehnsen Heavy Equipment Endowment
Jordan, R & A Scholarship
The Jerry Jourdain Endowed Memorial Scholarship
W. C. Judson Endowed Scholarship
J.M. Juran Scholarship
Victoria Kam Scholarship
Gordon Kamstra Memorial Endowed Scholarship
Dee Kap Memorial Scholarship
Karlis K. Kazerovskis Endowed Scholarship
The Fred W. Kellogg Scholarship
Kelso-Battle Scholarship
King, M.L./Alpha Phi Scholarship
Charles J. Kodis Advanced Indust'l Automation
Korean Students Scholarship
The Maude Korstange Scholarship

GENERAL INFORMATION

INSTITUTIONAL GRANTS AND SCHOLARSHIPS CONT.

Richard S. Labroff Endowed Scholarship
Marty Lass Golf Scholarship
Jack and Karen LeBarre Scholarship
Lewis & Lewis Surveying Scholarship
Thomas F. Love Endowed Swimming Scholarship
The Ruby MacNeill Endowed Memorial Scholarship
Donald and E. Lyle Magee Scholarship
Dr. Vijay Mahida Surveying Scholarship
Marriott Golf Scholarships
Minnie Mould Marsh Endowed Scholarship
Stephen Edward Martin Memorial Award
The Julia B. McCormick Scholarship Fund
McCree, W. Supplement Scholarship
McNaughton/McKay Scholarship
Mechanical SVC Cont-Am Scholarship
Mecosta County General Hospital Auxiliary Health Careers Scholarship
Meijer Inc. Pre-Senior Scholarship Award
Michigan Air Conditioning Scholarship
Michigan Association of Commercial Dental Labs Scholarship
Michigan Association of Crown & Bridge Endowed Scholarship
Michigan Construction Equipment Dealers Association Scholarship
Michigan Dairy/Kroger Scholarship
Michigan Mech Cont. Association Scholarship
Michigan Optometric Association Auxiliary Scholarship
Michigan Society of Registered Land Surveyors Scholarship
Mid Michigan Engineering & Survey Co., Inc. Scholarship
Mid Michigan MSCA Scholarship
Mid-Michigan Pharmacists Association Scholarship
Minority Student Academic Opportunity
Moffett, R. FFA Scholarship
M.O.I.S.D. Scholarship
Colonel Charles A. Mount and Dorothy Mount Memorial Scholarship
National Housing Endowment Lee S. Evans Scholarship
National Service Education Scholarship
National Society of Plastics Engineers
Jack M. Newcomb
The Nordman Foundation Scholarship
North American Heating and Air Conditioning Association Scholarship
Oakland Area Scholarship Award
Olofsson Corporation Scholarship
Opticians Association of Michigan Ed Marek Award
Outer Drive Hospital Auxiliary Scholarship
Outside Scholarship
Outside Scholarship YR-00
P & S Local 190 Scholarship
Warren C. and Beverly A. Parker Scholarship Endowment
R. Parks & M.L. King Scholarship
The Perialas Challenge

INSTITUTIONAL GRANTS AND SCHOLARSHIPS CONT.

PGA Foundation Scholarship for Minority Students
Pharmacists Mutual Scholarship Award
Plastics Institute of America
Popovich Academic Scholarship
Prakken Scholarship
Pro Golf Management Scholarship
The David P. Prior Scholarship
The Progressive Engineering Consultants of Grand Rapids, Inc. Scholarship
The Allen Puterbaugh Scholarship
RC/FSU Dist. Alumni Scholarship
Mylo Ragan Endowed Scholarship
Ed Redwood Scholarship
Geff Reinke Endowed Scholarship
Reith Riley Construction Scholarship
Thomas Reuther Scholarship
W. Ritchie Cr VICA Scholarship
Rite-Aid Junior Scholarship Award
Rought Surveying Scholarship
Rowe Inc. Scholarship
Saginaw Valley Safety and Health Council Scholarship Program
Vincent J. Salierno Scholarship
Joseph D. Sasaki Scholarship Fund
Donald G. Saum Surveying Scholarship
Bill & Lynne Scheible
H. & B. Schwarzbach Scholarship
Jim Shane Scholarship
Sarah Shell Scholarship Award
Shellenarger Engineering and Surveying PC Grant
Mike Shira Health Systems Management Scholarship
Shopko Pharmacy Scholarship Award
Norm Sievert Memorial Scholarship
Silhouette Optical Student Grant Program
Sloan Transportation Products Heavy Equipment Scholarship
John R. Smith Memorial Endowed Leadership Scholarship
Society for Information Management Scholarship
Victor & M. Spathelf Scholarship
Special Ability-Based Scholarship
Carl Starkey Endowed Memorial Loan Fund
M.G. Stauffer & PW Scholarship
Walter J. Stevenson Scholarship Fund
James Steward Memorial Fund Scholarship
Harry S. Swartz Pharmacy Administration Award
Ronald Keith Strohkirch Memorial Scholarship
George Storm Memorial Tech'l Teacher Ed.
Anne Szabunia Memorial Scholarship
Fred E. Taylor Endowed Scholarship
Jon C. and Margaret A. Taylor Student Assistance Fund
Tech Edu Scholarship

GENERAL INFORMATION

INSTITUTIONAL GRANTS AND SCHOLARSHIPS CONT.

Tenth Congressional District Scholarship
Thapa K. Surveying Scholarship
Toyota Higher Ed Program
C. Alan Tressler Memorial Scholarship Fund
Daniel Tyler Scholarship
Upper Division Academic Scholarship
Upper Peninsula Mi Pharmacy Association Scholarship
Urban Land Consultants Scholarship
Jacob and Gertrude Van Dyke Scholarship
Dr. Robert VanHoven Memorial Award
Varilux II Student Grant
The Helen Ferris Vartan Scholarship Fund
Vision Service Plan Academic Achievement
Vision Service Plan Scholarship
Wal-Mart Pharmacy Scholarship Award
The Dr. Andrea L. Warfield Memorial Endowed Scholarship
Wayne County Society of Optometrists Scholarship
Weeks-Lakin Optometry Scholarship
Dieter H. Weiss Award
W. Central Chapter of MI Society of Registered Land Surveyors Scholarship
West Michigan Land Surveyors Scholarship
J. J. Wheeler Scholarship
Dean A. Whitehead Memorial Scholarship
Robert F. Williams Scholarship
Wisconsin Independent Pharmacist Buying Group Inc. Award
Wollin Products Scholarship
Zakov Family Endowed Scholarship

INSTITUTIONAL LOANS

Roger Allen Student Assistance Fund
Allied Health Loan
Alumni Loan
Roy Alvarado Memorial Loan Fund
Walter Armbruster Memorial Loan Fund
Asian Student Loan
Bernice Behrens Student Assistance Fund
G. Berden Loan
Glenn C. Bond Memorial Loan Fund
Steve Bordano Memorial Loan Fund
Alden W. Brown Student Loan Fund
Fern & William Brown Loan Fund
A.G. Buchman Student Loan Fund
Robert Gertrude Burns Memorial Loan Fund
College of Business Memorial Loan Fund
Bush Memorial Loan Fund
Addie & Earl Campbell Memorial Loan Fund

INSTITUTIONAL LOANS CONT.

Carlisle Memorial Fund
Carr/South Emergency Loan
Claus Grad. Loan
Perry E. Converse Memorial Pharmacy Student Loan Fund
Lynn H. Cook Memorial Loan Fund
Lee W. Cookson Memorial Loan Fund
Cronk Loan
Cummings Loan
Matilda Ann Dell Pharmacy Student Loan Fund
Lowell DeMoss Memorial Student Loan Fund
David M. Denbrock Memorial Loan Fund
Dental Technician Student Loan Fund
Discretionary Loan Fund
Emergency Loan
Ewingleben R & S Loan
Richard Faber Loan
Carlton G. Ferris Student Loan Fund
M. Lewis Fishman Memorial Loan Fund
Walter H. Gillette Memorial Loan Fund
Graphic Art Loan Fund
Clyde C. Heinonen Memorial Loan Fund
Kurt Hellthaler Loan Fund
Fern R. Holden Student Loan Fund
Regina L. Stevenson Holt Memorial Loan Fund
Ansel C. Hook Memorial
Nancy Ingall Memorial Loan Fund
Jordan, R & A Loan
Karlis K. Kazerovski Endowment Loan
Richard S. Labroff Loan
Will Lane Pharmacy Student Assistance Fund
Louis E. Legg Student Assistance Fund
Lithocrafters and Bookcrafters Loan Fund
Henry Lowsma Memorial Loan Fund
Geraldine Travis MacGregor Memorial Loan Fund
Herbert H. Martz Student Assistance fund for Pharmacy Students
Gerrit Masselink Memorial Loan Fund
Earl H. McCormick Memorial Loan Fund
Michigan Association of Educational Secretaries Memorial Loan Fund
Michigan Construction Equipment Dealers Association Scholarship
Michigan State Federation of Women's Clubs Student Loan Fund
William C. Moore Memorial Loan Fund
Richard J. and Marion Morley Memorial Loan Fund
James Morton Memorial Loan Fund
Northern Michigan Road Commissioners Association Loan Fund
Charles S. Neithercut Student Loan Fund
College of Optometry Student Emergency Loan Fund
Arthur E. Ormsbee Memorial Loan Fund
Jay Oviatt Pharmacy Student Loan Fund

GENERAL INFORMATION

INSTITUTIONAL LOANS CONT.

Helena E. Paris Loan Fund
Perry Drug Stores, Inc. Loan Fund
College of Pharmacy Student Emergency Loan Fund
Dr. Ralph Pino Memorial Loan Fund
Francis R. Piper Loan Fund
Orval Plank Memorial Loan Fund
Leon Probst Memorial Loan Fund
Dean Donald Rankin Loan Fund
Redman Agency Inc. Student Loan Fund
Residential Life Scholarship
Dr. P & L Scholler Fund
V.R. Sines Memorial Fund
Max E. Smith Memorial Loan Fund
Ronald M. Solomon Memorial Loan Fund
Victor and Mercedes Spathelf Scholarship
Special Loan Fund
Kenneth Spoerk Memorial Loan Fund
Raymond W. Starr Student Loan Fund
Fred W. Swan Memorial Student Assistance Fund
Augusta Taisey memorial Loan Fund
Abigail Timme Endowed Student Loan Fund
Townsend and Buttum, Inc. Student Loan Fund
Rueben E. & Gertrude A. Trippensee Memorial Loan Fund
Alma Lidell Tufveson Memorial Loan Fund
Roy Clark Vandercook Memorial Loan Fund
William C, Wolfinger Memorial Loan Fund
Wolverine Club Student Loan Fund
R.M. Wylie Student Loan Fund

source: Investment/Grants Office May 1999

GENERAL INFORMATION

MICHIGAN ASSOCIATION OF GOVERNING BOARDS

The Michigan Association of Governing Boards (MAGB), is an organization of the governing bodies of the thirteen state-supported colleges and universities of Michigan. Since 1982, the MAGB has been hosting an awards convocation and dinner to honor students and faculty of member institutions for scholarly activity and public service.

Ferris State Faculty Honored Include:

1982	Gerald E. Lowther	Optometry
1982	Richard A. Santer	Arts & Sciences
1983	Herbert L. Carson	Arts & Sciences
1983	Nancy P. Uniacke	Optometry
1984	Everett J. Nienhouse	Arts & Sciences
1984	Ann Marie Remp	Business
1985	Ada Lou Carson	Arts & Sciences
1985	Robert E. Friar	Arts & Sciences
1986	Mary L. McCorriston	Arts & Sciences
1986	Michael E. Ryan	Arts & Sciences
1987	Charles R. Hurt	Arts & Sciences
1987	Mark L. Pletz	Optometry
1988	Robert J. Krueger	Pharmacy
1988	Rose Ann Swartz	Business
1989	Richard Pisacreta	Arts & Sciences
1989	Katherine Manley	Education
1990	Robert C. Ferguson	Arts & Sciences
1990	J. James Saladin	Optometry
1991	John P. Caserta	Arts & Sciences
1991	Gary C. Horn	Arts & Sciences
1992	Phillip Sterling	Arts & Sciences
1992	Elizabeth Turpin	Arts & Sciences
1993	Mark Curtis	Technology
1993	Marilyn Gillette	Arts & Sciences
1994	Lynn Bartholome	Arts & Sciences
1994	Michael P. Keating	Optometry
1995	Adnan Dakkuri	Pharmacy
1995	Chryl Irvine	Arts & Sciences
1996	Susan Fogarty	Allied Health Sciences
1996	Khagendra Thapa	Technology
1997	Olukemi Adewusi	Arts & Sciences
1997	David Russell	Arts & Sciences
1998	Mary Murnik	Arts & Sciences
1998	David Pilgrim	Arts & Sciences
1999	Walter Hoeksema	Arts & Sciences
1999	Caroline Stern	Arts & Sciences

GENERAL INFORMATION

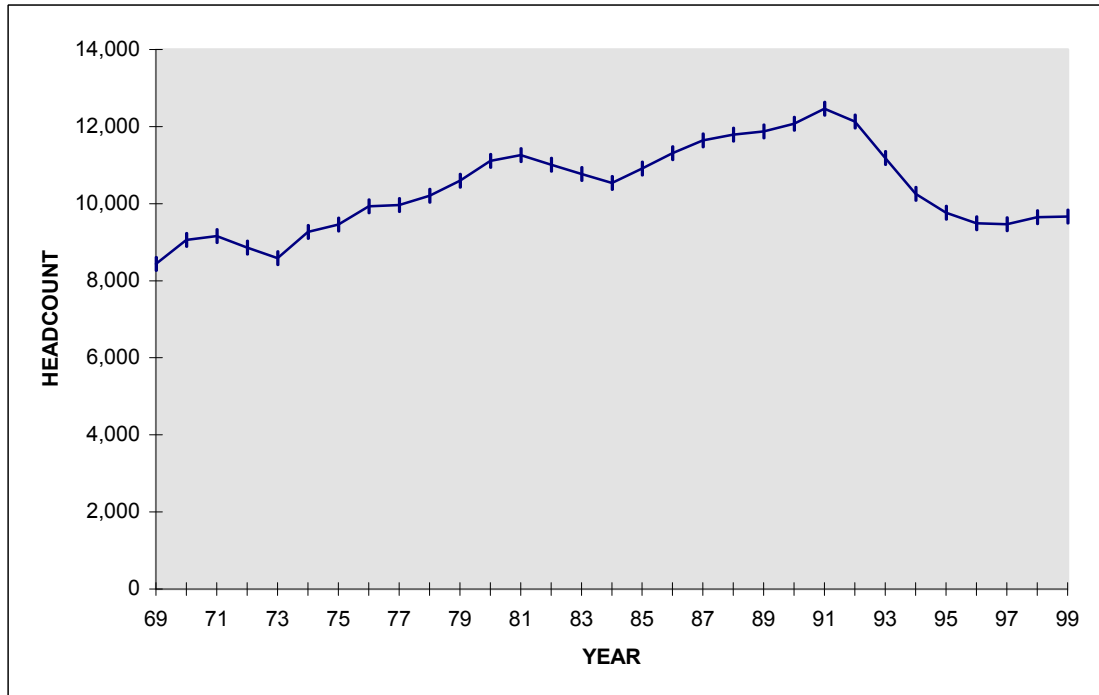
MICHIGAN ASSOCIATION OF GOVERNING BOARDS CONT.

Ferris State Student Recipients:

1982	Pamela Sue Fitch	Allied Health
1982	Steven Mark Harvey	Business
1983	Douglas Totten	Optometry
1983	Beth Trombley	Pharmacy
1984	Michele Behne	Arts & Sciences
1984	Kevin Lokar	Arts & Sciences
1985	David Gough	Business
1985	Kathleen Spuller	Arts & Sciences
1986	Bradford Krueger	Arts & Sciences
1986	Diedre Nordlund	Pharmacy
1987	Ann Marie Wilson	Pharmacy
1987	Mark Swan	Optometry
1988	Earl Heron	Technology
1988	Patricia Hoard	Optometry
1989	Lee Peplinski	Optometry
1989	Lisa Kluetz	Pharmacy
1990	Mary Jo Horn	Optometry
1990	David J. Miller	Pharmacy
1991	Alan R. Hopkins	Technology
1991	Brenda L. Spedowski	Business
1992	Jane A. Tughan	Allied Health Sciences
1992	Thomas C. Dowling	Pharmacy
1993	Steven Frederickson	Technology
1993	Ann Marie Boyke	Optometry
1994	Jennifer Pisano King	Arts & Sciences
1994	Chris Vsetula	Technology
1995	Anthony Hatfield	Business
1995	Leslie Hatfield	Business
1996	Susan Essebaggers	Pharmacy
1996	Brook Ward	Allied Health Sciences
1997	Kathy Baker	Technology
1997	Jeremy B. Thompson	Technology
1998	Dan K. Roberts	Education
1998	Melissa Joy Ryba	Arts & Sciences
1999	Tony L Ferrante	Technology
1999	Cynthia L. Bultman	Education

Students/Enrollment

TOTAL HEADCOUNT ENROLLMENT



FALL ENROLLMENT 1969 - 1999

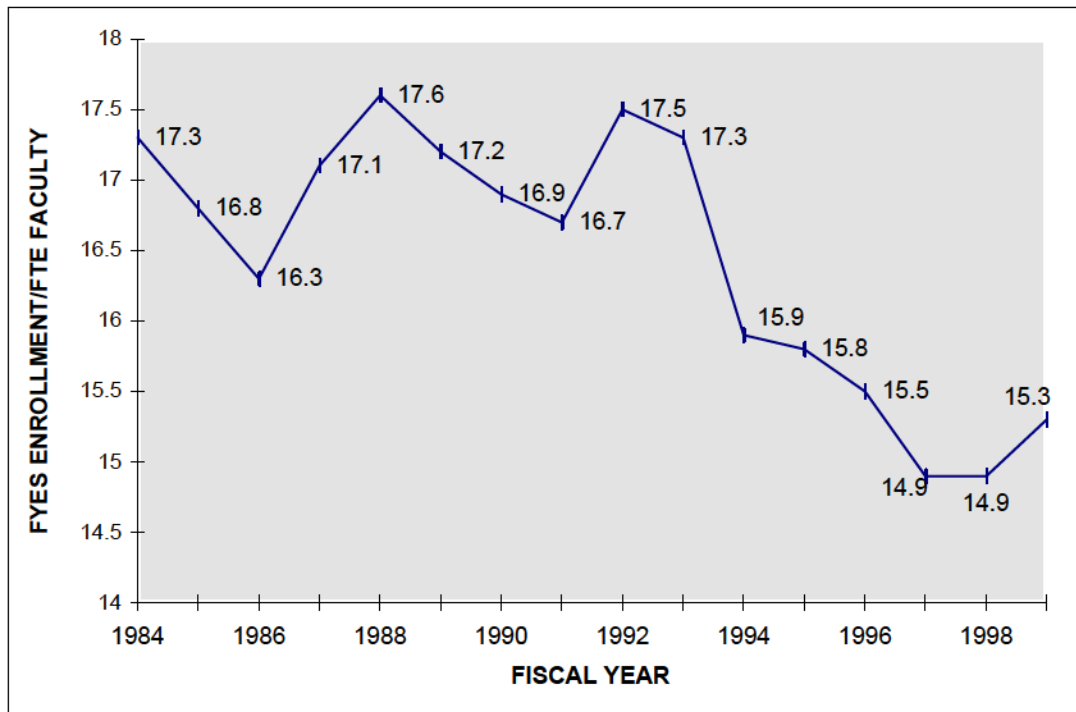
1969	8,439	1984	10,540
1970	9,057	1985	10,909
1971	9,161	1986	11,310
1972	8,864	1987	11,643
1973	8,584	1988	11,792
1974	9,264	1989	11,878
1975	9,460	1990	12,076
1976	9,934	1991	12,461
1977	9,965	1992	12,134
1978	10,208	1993	11,188
1979	10,596	1994	10,258
1980	11,112	1995	9,767
1981	11,261	1996	9,495
1982	11,008	1997	9,468
1983	10,767	1998	9,651
		1999	9,668

Source: Office of the Registrar/Office of Institutional Research

STUDENTS/ENROLLMENT

FULL YEAR EQUATED STUDENT (FYES) ENROLLMENT PER FULL TIME EQUATED (FTE) FACULTY

1984 to 1999



Source: State of Michigan HEIDI Database, Budget Office

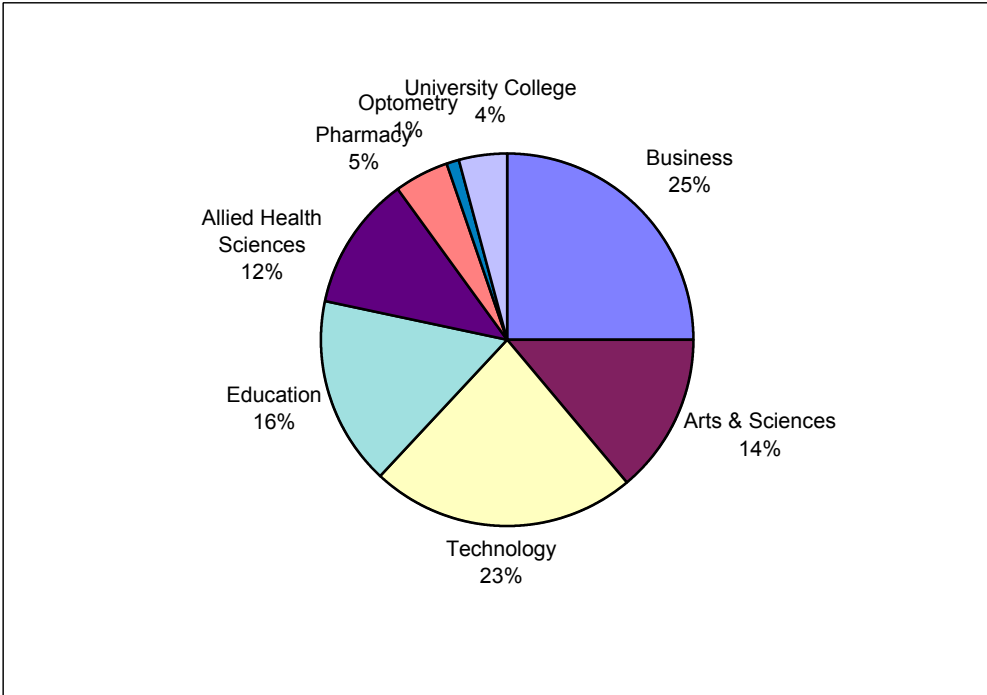
**5-YEAR ENROLLMENT BY COLLEGE
FALL SEMESTER**

COLLEGE	1995-96	1996-97	1997-98	1998-99	1999-00
ALLIED HEALTH SCIENCES	1,568	1,498	1,361	1,282	1,146
ARTS & SCIENCES	1,881	1,787	1,315	1,328	1,346
BUSINESS	2,342	2,136	2,208	2,360	2,419
EDUCATION	1,301	1,234	1,338	1,432	1,575
OPTOMETRY	157	152	152	152	123
PHARMACY	441	450	431	427	437
TECHNOLOGY	2,077	2,238	2,204	2,234	2224
UNIVERSITY COLLEGE	0	0	459	436	398
TOTAL	9,767	9,495	9,468	9,651	9,668

Source: Fall Semester Enrollment Report, Office of the Registrar

STUDENTS/ENROLLMENT

PERCENT OF STUDENTS BY COLLEGE FALL SEMESTER 1999



STUDENT ENROLLMENT BY COLLEGE

ALLIED HEALTH SCIENCES	1,146
ARTS & SCIENCES	1,346
BUSINESS	2,419
EDUCATION	1,575
OPTOMETRY	123
PHARMACY	437
TECHNOLOGY	2,224
UNIVERSITY COLLEGE	398
TOTAL	9,668

Source: Fall Semester Enrollment Report, Office of the Registrar

ENROLLMENT SUMMARY

FALL 1999

	<u>FULL-TIME</u>	<u>PART-TIME</u>	<u>TOTAL</u>
UNDERGRADUATE STUDENTS	7231	1960	9191
GRADUATE STUDENTS	78	236	314
FIRST PROFESSIONAL STUDENTS	162	1	163
ALL STUDENTS	7471	2197	9668
FTIAC'S * (INCLUDED WITH UNDERGRADUATES)	1900	208	2108

* IPEDS FTIACS include students who enrolled in summer and continued into fall

	<u>MEN</u>	<u>WOMEN</u>	<u>TOTAL</u>
TOTAL FULL-TIME	4318	3153	7471
TOTAL PART-TIME	1046	1151	2197
TOTALS	5364	4304	9668

Source: IPEDS 1999

STUDENTS/ENROLLMENT

COMPARATIVE ENROLLMENT REPORT BY COLLEGE- FALL 1999

<u>COLLEGE</u>	<u>MEN</u>	<u>WOMEN</u>	<u>1999 TOTAL</u>	<u>1998 TOTAL</u>
ALLIED HEALTH SCIENCES	143	1,003	1,146	1,282
Bachelor Degree	84	384	468	513
Associate Degree	59	611	670	761
Undeclared Major	0	6	6	8
Certificate	0	2	2	0
ARTS & SCIENCES	504	842	1,346	1,328
Bachelor Degree	146	317	463	427
Associate Degree	221	339	560	584
Undeclared Major	137	186	323	317
BUSINESS	1,430	989	2,419	2,360
Masters Degree	80	45	125	117
Bachelor Degree	1,153	704	1,857	1,828
Associate Degree	146	198	344	344
Undeclared Major	20	18	38	67
Certificate	31	24	55	4
EDUCATION	790	785	1,575	1,432
Masters Degree	80	79	159	105
Bachelor Degree	417	343	760	727
Associate Degree	250	291	541	472
Undeclared Major U.G.	9	20	29	36
Undeclared Major Grad.	11	19	30	31
Spec. Stu. (non-degree cert.)	23	33	56	61
OPTOMETRY	51	72	123	152
O.D. Degree	51	72	123	124
Associate Degree	0	0	0	28
PHARMACY	207	230	437	427
Pharm D Degree	16	24	40	27
Bachelor Degree	191	206	397	400
TECHNOLOGY	2,012	212	2,224	2,234
Bachelor Degree	918	90	1,008	960
Associate Degree	1,049	115	1,164	1,218
Undeclared Major	25	4	29	41
Certificate	20	3	23	15
UNIVERSITY COLLEGE	227	171	398	436
Associate Degree	227	171	398	436
TOTALS	5,364	4,304	9,668	9,651

Source: Fall Semester Enrollment Report, Office of the Registrar

STUDENTS/ENROLLMENT

ENROLLMENT BY AGE UNDERGRADUATE STUDENTS - DEGREE SEEKING FALL 1999

AGE	FULL-TIME STUDENTS				PART-TIME STUDENTS			
	MALE	FEMALE	GRAND TOTAL		MALE	FEMALE	GRAND TOTAL	
<18	1	4	5	0.07%	27	44	71	4.19%
18	558	493	1,051	14.62%	26	28	54	3.19%
19	900	626	1,526	21.23%	23	23	46	2.72%
20	669	516	1,185	16.49%	58	43	101	5.96%
21	604	415	1,019	14.18%	74	37	111	6.55%
22	489	309	798	11.10%	64	50	114	6.73%
23	309	167	476	6.62%	71	43	114	6.73%
24	168	90	258	3.59%	45	45	90	5.31%
25	112	59	171	2.38%	39	35	74	4.37%
26	74	51	125	1.74%	30	27	57	3.36%
27	58	30	88	1.22%	27	19	46	2.72%
28	51	26	77	1.07%	30	21	51	3.01%
29	33	28	61	0.85%	23	32	55	3.25%
30	26	23	49	0.68%	16	36	52	3.07%
31	14	18	32	0.45%	19	17	36	2.13%
32	16	13	29	0.40%	19	15	34	2.01%
33	14	16	30	0.42%	14	16	30	1.77%
34	9	16	25	0.35%	12	15	27	1.59%
35	10	17	27	0.38%	18	27	45	2.66%
36	3	20	23	0.32%	13	21	34	2.01%
37	11	9	20	0.28%	11	16	27	1.59%
38	9	10	19	0.26%	19	21	40	2.36%
39	5	5	10	0.14%	9	17	26	1.53%
40	3	8	11	0.15%	19	17	36	2.13%
41	7	5	12	0.17%	11	27	38	2.24%
42	8	6	14	0.19%	11	20	31	1.83%
43	3	4	7	0.10%	7	19	26	1.53%
44		6	6	0.08%	11	26	37	2.18%
45	2	3	5	0.07%	7	17	24	1.42%
46		2	2	0.03%	4	17	21	1.24%
47	2	4	6	0.08%	8	18	26	1.53%
48	2	1	3	0.04%	9	12	21	1.24%
49	2	3	5	0.07%	1	7	8	0.47%
50		1	1	0.01%	4	9	13	0.77%
51	2	1	3	0.04%	2	9	11	0.65%
52	1	1	2	0.03%	2	3	5	0.30%
53	2	1	3	0.04%	3	3	6	0.35%
54		2	2	0.03%	1	2	3	0.18%
55			0	0.00%		2	2	0.12%
56			0	0.00%		1	1	0.06%
57			0	0.00%			0	0.00%
58			0	0.00%			0	0.00%
59			0	0.00%		3	3	0.18%
60			0	0.00%	1	1	2	0.12%
61			0	0.00%			0	0.00%
62			0	0.00%			0	0.00%
63			0	0.00%			0	0.00%
64		1	1	0.01%			0	0.00%
>64			0	0.00%	1	1	2	0.12%
UNKNOWN		1	1	0.01%	22	21	43	2.54%
TOTAL	4,177	3,011	7,188	100.00%	811	883	1,694	100.00%

Note: For age summary see page 13

STUDENTS/ENROLLMENT

ENROLLMENT BY AGE UNDERGRADUATE STUDENTS - NON-DEGREE SEEKING FALL 1999

AGE	FULL-TIME STUDENTS			PART-TIME STUDENTS				
	MALE	FEMALE	GRAND TOTAL	MALE	FEMALE	GRAND TOTAL		
<18			0	0.00%	7	5	12	4.51%
18			0	0.00%	4	4	8	3.01%
19	2		2	4.65%		1	1	0.38%
20	2	1	3	6.98%	6		6	2.26%
21		2	2	4.65%	3	2	5	1.88%
22		3	3	6.98%	4	2	6	2.26%
23	4	1	5	11.63%	4	2	6	2.26%
24	1	1	2	4.65%	2	4	6	2.26%
25	1	1	2	4.65%	6	7	13	4.89%
26		3	3	6.98%	3		3	1.13%
27	1		1	2.33%	2	5	7	2.63%
28	2	1	3	6.98%	1	4	5	1.88%
29	2	2	4	9.30%	4	5	9	3.38%
30	1		1	2.33%	2	5	7	2.63%
31	2		2	4.65%	2	4	6	2.26%
32		2	2	4.65%	4	3	7	2.63%
33			0	0.00%		3	3	1.13%
34			0	0.00%	2	5	7	2.63%
35	1	1	2	4.65%	2	5	7	2.63%
36			0	0.00%	1	1	2	0.75%
37	1		1	2.33%	2	5	7	2.63%
38		1	1	2.33%	5	4	9	3.38%
39			0	0.00%	5	5	10	3.76%
40			0	0.00%		4	4	1.50%
41		1	1	2.33%	2	5	7	2.63%
42	2	1	3	6.98%	1	5	6	2.26%
43			0	0.00%	4	6	10	3.76%
44			0	0.00%	4	5	9	3.38%
45			0	0.00%	5	2	7	2.63%
46			0	0.00%	1	4	5	1.88%
47			0	0.00%	4	3	7	2.63%
48			0	0.00%	1	1	2	0.75%
49			0	0.00%	2	7	9	3.38%
50			0	0.00%	3	2	5	1.88%
51			0	0.00%	1	3	4	1.50%
52			0	0.00%	2	3	5	1.88%
53			0	0.00%	1		1	0.38%
54			0	0.00%		1	1	0.38%
55			0	0.00%	2		2	0.75%
56			0	0.00%		3	3	1.13%
57			0	0.00%		2	2	0.75%
58			0	0.00%			0	0.00%
59			0	0.00%			0	0.00%
60			0	0.00%			0	0.00%
61			0	0.00%	2		2	0.75%
62			0	0.00%			0	0.00%
63			0	0.00%		1	1	0.38%
64			0	0.00%	1		1	0.38%
>64			0	0.00%	3		3	1.13%
UNKNOWN			0	0.00%	7	11	18	6.77%
TOTAL	22	21	43	100.00%	117	149	266	100.00%

Note: For age summary see page 13

**ENROLLMENT BY AGE
GRADUATE STUDENTS
FALL 1999**

AGE	FULL-TIME STUDENTS			PART-TIME STUDENTS				
	MALE	FEMALE	GRAND TOTAL	MALE	FEMALE	GRAND TOTAL		
<18			0	0.00%			0	0.00%
18			0	0.00%			0	0.00%
19			0	0.00%			0	0.00%
20			0	0.00%			0	0.00%
21	3		3	3.85%			0	0.00%
22	3	2	5	6.41%	1		1	0.42%
23	6	2	8	10.26%	3	1	4	1.69%
24	8	4	12	15.38%	3	4	7	2.97%
25	1	3	4	5.13%	5	5	10	4.24%
26	6	4	10	12.82%	4	3	7	2.97%
27			0	0.00%	7	6	13	5.51%
28	5	1	6	7.69%	3	8	11	4.66%
29	5		5	6.41%	5	5	10	4.24%
30			0	0.00%	7	2	9	3.81%
31			0	0.00%	5	2	7	2.97%
32	1		1	1.28%	10	4	14	5.93%
33	1	2	3	3.85%	2	5	7	2.97%
34			0	0.00%	3	3	6	2.54%
35	2	2	4	5.13%	2	3	5	2.12%
36	2	1	3	3.85%	2	5	7	2.97%
37			0	0.00%	4	5	9	3.81%
38	2		2	2.56%	1	5	6	2.54%
39	2		2	2.56%	2	4	6	2.54%
40		1	1	1.28%	3	3	6	2.54%
41			0	0.00%	7	5	12	5.08%
42		1	1	1.28%	5	8	13	5.51%
43		1	1	1.28%	4	4	8	3.39%
44			0	0.00%	6	4	10	4.24%
45	1	1	2	2.56%	3	4	7	2.97%
46	1		1	1.28%	2	2	4	1.69%
47			0	0.00%	1	4	5	2.12%
48			0	0.00%	3	2	5	2.12%
49		1	1	1.28%		3	3	1.27%
50			0	0.00%	3	2	5	2.12%
51			0	0.00%	2		2	0.85%
52			0	0.00%		2	2	0.85%
53	2		2	2.56%	3	1	4	1.69%
54			0	0.00%	1	1	2	0.85%
55			0	0.00%	1		1	0.42%
56	1		1	1.28%	1	1	2	0.85%
57			0	0.00%			0	0.00%
58			0	0.00%	2	1	3	1.27%
59			0	0.00%			0	0.00%
60			0	0.00%			0	0.00%
61			0	0.00%			0	0.00%
62			0	0.00%		1	1	0.42%
63			0	0.00%			0	0.00%
64			0	0.00%			0	0.00%
>64			0	0.00%			0	0.00%
UNKNOWN			0	0.00%	2		2	0.85%
TOTAL	52	26	78	100.00%	118	118	236	100.00%

Note: For age summary see page 13

STUDENTS/ENROLLMENT

ENROLLMENT BY AGE FIRST PROFESSIONAL STUDENTS FALL 1999

AGE	FULL-TIME STUDENTS			PART-TIME STUDENTS				
	MALE	FEMALE	GRAND TOTAL	MALE	FEMALE	GRAND TOTAL		
<18			0	0.00%			0	0.00%
18			0	0.00%			0	0.00%
19			0	0.00%			0	0.00%
20		1	1	0.62%			0	0.00%
21	1	4	5	3.09%			0	0.00%
22	10	18	28	17.28%			0	0.00%
23	15	20	35	21.60%			0	0.00%
24	10	11	21	12.96%			0	0.00%
25	10	14	24	14.81%			0	0.00%
26	8	5	13	8.02%			0	0.00%
27	4	3	7	4.32%			0	0.00%
28	1	5	6	3.70%			0	0.00%
29	2	4	6	3.70%			0	0.00%
30		3	3	1.85%			0	0.00%
31	1	4	5	3.09%		1	1	100.00%
32		1	1	0.62%			0	0.00%
33		1	1	0.62%			0	0.00%
34		1	1	0.62%			0	0.00%
35	1		1	0.62%			0	0.00%
36			0	0.00%			0	0.00%
37			0	0.00%			0	0.00%
38	1		1	0.62%			0	0.00%
39	1		1	0.62%			0	0.00%
40	1		1	0.62%			0	0.00%
41	1		1	0.62%			0	0.00%
42			0	0.00%			0	0.00%
43			0	0.00%			0	0.00%
44			0	0.00%			0	0.00%
45			0	0.00%			0	0.00%
46			0	0.00%			0	0.00%
47			0	0.00%			0	0.00%
48			0	0.00%			0	0.00%
49			0	0.00%			0	0.00%
50			0	0.00%			0	0.00%
51			0	0.00%			0	0.00%
52			0	0.00%			0	0.00%
53			0	0.00%			0	0.00%
54			0	0.00%			0	0.00%
55			0	0.00%			0	0.00%
56			0	0.00%			0	0.00%
57			0	0.00%			0	0.00%
58			0	0.00%			0	0.00%
59			0	0.00%			0	0.00%
60			0	0.00%			0	0.00%
61			0	0.00%			0	0.00%
62			0	0.00%			0	0.00%
63			0	0.00%			0	0.00%
64			0	0.00%			0	0.00%
>64			0	0.00%			0	0.00%
UNKNOWN			0	0.00%			0	0.00%
TOTAL	67	95	162	100.00%	0	1	1	100.00%

Note: For age summary see page 13

Source: SIS+ Download Fall 1999, IPEDS 99/FALL B

**AVERAGE AGE BY EDUCATIONAL LEVEL
AND FULL-TIME, PART-TIME STATUS**

FALL 1999

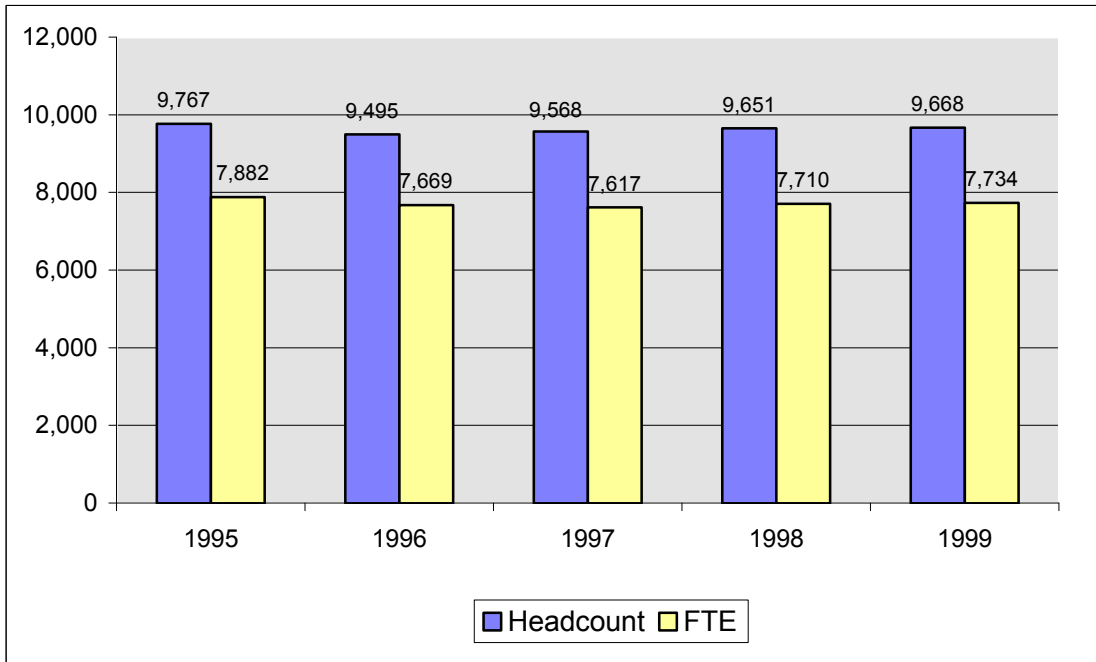
Average Age

		FULL-TIME AND <u>FULL-TIME PART-TIME PART-TIME</u>	
UNDERGRADUATE STUDENTS (DEGREE SEEKING)	21.5	28.7	22.8
UNDERGRADUATE STUDENTS (NON-DEGREE SEEKING)	27.7	33.3	32.5
GRADUATE STUDENTS	29.8	36.8	35.1
FIRST PROFESSIONAL STUDENTS	25	31	25.1
ALL STUDENTS	22.1	30.1	23.8

Source: IPEDS 1999

STUDENTS/ENROLLMENT

TOTAL FALL HEADCOUNT ENROLLMENT COMPARED TO FTE



<u>Fall Semester</u>	<u>Headcount</u>	<u>FTE</u>
1995	9,767	7,882
1996	9,495	7,669
1997	9,568	7,617
1998	9,651	7,710
1999	9,668	7,734

Note: FTE - Full-Time Equated Student, i.e. , 2 Half-Time Students = 1 FTE
 FTE is calculated using Presidents Council definition.

Source: Office of Institutional Research, Presidents Council Report 10/99

SCH/FTE/FYES

Student Credit Hours (SCH) Produced By Student Level

Fall Semester	Undergrad	Graduate	1st Prof	Total
1995	118,990.5	699.0	2,677.0	122,366.5
1996	115,598.5	734.0	2,739.0	119,071.5
1997	114,110.0	1,317.0	2,616.0	118,043.0
1998	115,270.5	1,470.0	2,751.0	119,491.5
1999	115,032.5	1,797.0	3,062.0	119,891.5

Full-Time Equated Student (FTE) By Student Level

Fall Semester	Undergrad	Graduate	1st Prof	Total
1995	7,677	58	147	7,882
1996	7,458	61	150	7,669
1997	7,362	110	145	7,617
1998	7,436	123	151	7,710
1999	7,421	150	163	7,734

Source: Office of Institutional Research, Presidents Council Reports, 10/99

Full-Year Equated Student (FYES)

Academic Yr.	FYES
95/96	8,434
96/97	8,229
97/98	8,164
98/99	8,227
99/00	8,254 (ESTIMATE)

Source: State of Michigan HEIDI Database, Appendix A, Budget Office

STUDENTS/ENROLLMENT

COMPARATIVE ENROLLMENT BY RACE/ETHNIC ORIGIN Fall 1998/Fall 1999

	1998 TOTAL	1999 TOTAL	CHANGES
AMERICAN INDIAN/NATIVE ALASKAN	103	82	-21
ASIAN OR PACIFIC ISLANDER	197	191	-6
BLACK	936	978	42
FOREIGN	279	291	12
HISPANIC	123	119	-4
WHITE	7663	7630	-33
UNREPORTED	350	377	27
TOTAL	9,651	9,668	17

The following definitions are used in determining racial/ethnic designations:

American Indian or Alaskan Native: A person having origins in any of the original peoples of North America.

Asian or Pacific Islander: A person having origins in any of the original peoples of the Far East, Southeast Asia, the Indian Subcontinent, or the Pacific Islands.

Black (not of Hispanic Origin): A person having origins in any of the black racial groups of Africa.

Foreign: A person who is not a citizen of the United States, and who is in this country on a temporary basis and does not have a right to remain indefinitely.

Hispanic: A person of Mexican, Puerto Rican, Cuban, Central or South American or other Spanish culture or origin.

White (not of Hispanic origin): A person having origins in any of the original peoples of Europe, North Africa, or the Middle East.

Source: Fall Semester Enrollment Report, Office of the Registrar

STUDENTS/ENROLLMENT

ETHNIC DISTRIBUTION BY COLLEGE FALL 1999 ENROLLMENT

<u>COLLEGE</u>	American Indian/Native <u>Alaskan</u>	Asian or Pacific <u>Islander</u>	<u>Black</u>	<u>Foreign</u>	<u>Hispanic</u>	<u>White</u>	Not <u>Reported</u>	<u>Total</u>
<u>Allied Health Sciences</u>								
Female	11	13	84	9	8	846	32	1,003
Male	0	1	17	7	5	109	4	143
Total	11	14	101	16	13	955	36	1,146
<u>Arts & Sciences</u>								
Female	4	12	109	28	14	627	48	842
Male	4	11	56	29	5	363	36	504
Total	8	23	165	57	19	990	84	1,346
<u>Business</u>								
Female	12	11	148	35	14	738	31	989
Male	10	16	116	85	19	1,144	40	1,430
Total	22	27	264	120	33	1,882	71	2,419
<u>Education</u>								
Female	10	1	134	5	13	579	43	785
Male	13	9	98	9	11	617	33	790
Total	23	10	232	14	24	1,196	76	1,575
<u>Optometry</u>								
Female	0	4	0	2	0	63	3	72
Male	0	0	0	2	0	45	4	51
Total	0	4	0	4	0	108	7	123
<u>Pharmacy</u>								
Female	1	40	5	19	2	151	12	230
Male	1	41	5	27	0	122	11	207
Total	2	81	10	46	2	273	23	437
<u>Technology</u>								
Female	2	2	21	4	2	168	13	212
Male	10	24	94	28	19	1,779	58	2,012
Total	12	26	115	32	21	1,947	71	2,224
<u>University College</u>								
Female	3	4	46	0	4	111	3	171
Male	1	2	45	2	3	168	6	227
Total	4	6	91	2	7	279	9	398
Total Female	43	87	547	102	57	3,283	185	4,304
Total Male	39	104	431	189	62	4,347	192	5,364
Total	82	191	978	291	119	7,630	377	9,668

Source: Office of Institutional Research

STUDENTS/ENROLLMENT

ENROLLMENT BY PROGRAM FALL SEMESTER

COLLEGE	1995/96	1996/97	1997/98	1998/99	1999/00
ALLIED HEALTH SCIENCES					
ALLIED DENTAL					
Dental Hygiene	110	107	113	124	107
Dental Technology	26	22	27	6	0
<i>DEPARTMENT TOTAL</i>	136	129	140	130	107
ENVIRONMENTAL & CLINICAL SCIENCES					
Indust & Environmental Health Mgt	110	88	62	40	37
Medical Technology	70	63	60	50	47
Medical Laboratory Technology	28	31	24	19	12
<i>DEPARTMENT TOTAL</i>	208	182	146	109	96
HOSPITAL RELATED					
Nuclear Medicine 2-Yr	30	34	21	23	28
Nuclear Medicine 4-Yr	33	32	35	42	28
Opticianry**	0	0	0	0	25
Radiography	113	119	109	110	106
Respiratory Care	32	39	34	26	35
<i>DEPARTMENT TOTAL</i>	208	224	199	201	222
NURSING					
Nursing 2-Yr	95	95	106	94	63
Nursing 4-Yr	11	12	1	2	0
On-Campus Total	106	107	107	96	63
OFF-CAMPUS					
Nursing 4-Yr	244	237	209	214	233
Off-Campus Total	244	237	209	214	233
<i>DEPARTMENT TOTAL</i>	350	344	316	310	296
PRE-ALLIED HEALTH					
Pre-Dental Hygiene*	81	103	106	110	91
Pre-Health Care Systems Admin*	0	3	0	2	2
Pre-Health Information Management*	4	3	1	1	0
Pre-Health Information Technology*	9	10	0	3	2
Pre-Health Systems*	1	0	0	0	0
Pre-Indus Environmental Health Mgt*	0	3	3	1	3
Pre-Medical Laboratory Tech 2-Yr*	9	6	4	3	3
Pre-Medical Technology*	10	4	2	4	2
Pre-Medical Technology Transfer*	0	1	0	0	0
Pre-Nuclear Medicine 2-Yr*	31	31	21	13	8
Pre-Nuclear Medicine 4-Yr*	7	10	8	8	2
Pre-Nursing 2-Yr*	173	165	131	149	115
Pre-Opticianry **	0	0	0	0	2
Pre-Radiography*	59	37	65	48	39
Pre-Respiratory Care*	37	26	9	8	10
<i>DEPARTMENT TOTAL</i>	421	402	350	350	279

STUDENTS/ENROLLMENT

COLLEGE	1995/96	1996/97	1997/98	1998/99	1999/00
ALLIED HEALTH SCIENCES					
HEALTH MANAGEMENT					
Health Care Systems Admin	70	82	90	87	68
Health Information Technology 2-Yr	50	30	35	18	19
Health Information Mgt 4-Yr	42	49	44	41	35
Health Systems Management	20	7	2	1	0
On-Campus Total	182	168	171	147	122
OFF-CAMPUS					
Undeclared	12	9	4	8	6
Coding/Reimbursement Specialist Cert	0	0	0	0	2
EXD Environmental Health	0	0	1	0	0
Health Care Systems Admin	32	24	25	13	11
Health Information Technology 2-Yr	11	12	4	7	5
Health Information Mgt 4-Yr	7	4	5	7	0
Health Systems Management	1	0	0	0	0
Off-Campus Total	63	49	39	35	24
<i>DEPARTMENT TOTAL</i>	245	217	210	182	146
ON-CAMPUS TOTAL	1,261	1,212	1,113	1,033	889
OFF-CAMPUS TOTAL	307	286	248	249	257
COLLEGE TOTAL	1,568	1,498	1,361	1,282	1,146

* These curricula are a subset of the base programs and are utilized by students who are academically admissible and are waiting to enter the technical phase of the program or by students who are fulfilling academic requirements for program admission.

**Opticianry moved from Michigan College of Optometry to College of Allied Health Sciences beginning Fall 1999

STUDENTS/ENROLLMENT

ENROLLMENT BY PROGRAM FALL SEMESTER

COLLEGE	1995/96	1996/97	1997/98	1998/99	1999/00
ARTS & SCIENCES					
Evening College	168	114	105	158	128
Fast Track	25	52	80	96	118
Undeclared	81	149	0	0	40
On-Campus Total	274	315	185	254	286
OFF-CAMPUS					
Undeclared	0	63	72	36	3
Off-Campus Total	0	63	72	36	3
<i>DEPARTMENT TOTAL</i>	274	378	257	290	289
BIOLOGY					
Ornamental Horticulture	28	27	26	28	35
Applied Biology	82	71	51	45	47
Applied Biology/Environ Biology Trac	0	0	0	0	3
Applied Biology/Pre-Dentistry Track	0	15	11	17	21
Applied Biology/Pre-Medicine Track	0	21	29	35	42
App Biol/Pre-Phys Therapy Track	0	2	10	6	16
Applied Biology/Pre-Vet Med Track	0	9	16	18	17
Applied Biology/Sports Med Track	0	3	11	12	6
Biotechnology	42	38	28	26	24
<i>DEPARTMENT TOTAL</i>	152	186	182	187	211
HUMANITIES					
Applied Speech Communication AA	0	0	1	5	8
Applied Speech Communication BS	0	0	17	27	38
<i>DEPARTMENT TOTAL</i>	0	0	18	32	46
LANGUAGES & LITERATURE					
Journalism	7	2	1	0	0
Technical & Prof Communication	19	22	23	18	24
<i>DEPARTMENT TOTAL</i>	26	24	24	18	24
MATHEMATICS					
Actuarial Science***	6	7	4	5	0
Applied Mathematics	5	9	3	5	6
Applied Math/Actuarial Science Tra	0	0	0	0	4
Applied Math/Statistics Track	0	0	0	0	1
<i>DEPARTMENT TOTAL</i>	11	16	7	10	11
PHYSICAL SCIENCES					
Industrial Chemistry Technology	16	12	10	11	16
<i>DEPARTMENT TOTAL</i>	16	12	10	11	16

STUDENTS/ENROLLMENT

COLLEGE	1995/96	1996/97	1997/98	1998/99	1999/00
ARTS & SCIENCES					
SOCIAL SCIENCES					
Social Work	173	174	129	132	123
Public Administration	0	0	11	21	32
Intensive English Program **	0	0	43	27	34
On-Campus Total	173	174	183	180	189
OFF-CAMPUS					
Social Work	30	41	61	60	59
Off-Campus Total	30	41	61	60	59
<i>DEPARTMENT TOTAL</i>	203	215	244	240	248
STUDENT DEVELOPMENT SERVICES					
Collegiate Skills *	215	174	0	0	0
Directed Studies *	157	171	0	0	0
Intensive English Program **	47	55	0	0	0
<i>DEPARTMENT TOTAL</i>	419	400	0	0	0
PRE-PROF NON-SCIENCES					
Liberal Arts	262	106	99	58	53
Liberal Arts/TV Production	0	14	7	0	0
Pre-Law	39	42	26	33	33
Pre-Social Work	24	26	30	34	42
Pre-Technical Communications	0	1	4	0	0
<i>DEPARTMENT TOTAL</i>	325	189	166	125	128
PRE-PROF SCIENCE					
Pre-Dentistry	12	0	0	0	0
Pre-Engineering	6	6	10	6	7
Pre-Medicine	27	1	0	0	0
Pre-Mortuary Science	13	9	8	8	4
Pre-Optometry	72	68	68	88	85
Pre-Pharmacy	192	161	181	199	164
Pre-Science	119	121	140	114	113
Pre-Veterinary Medicine	14	1	0	0	0
<i>DEPARTMENT TOTAL</i>	455	367	407	415	373
ON-CAMPUS TOTAL	1,851	1,683	1,182	1,232	1,284
OFF-CAMPUS TOTAL	30	104	133	96	62
COLLEGE TOTAL	1,881	1,787	1,315	1,328	1,346

* Under University College beginning Winter 1997

** Moved to Social Sciences Dept. Winter 1997

***Actuarial Science is a track in Applied Math beginning Fall 1999

STUDENTS/ENROLLMENT

ENROLLMENT BY PROGRAM FALL SEMESTER

COLLEGE	1995/96	1996/97	1997/98	1998/99	1999/00
BUSINESS					
ACCOUNTANCY *					
Accountancy 4-Yr	133	0	0	0	0
Accountancy CIS 4-Yr	25	0	0	0	0
Accountancy Finance 4-Yr	18	0	0	0	0
Accountancy Transfer	16	0	0	0	0
On-Campus Total	192	0	0	0	0
OFF-CAMPUS					
Accountancy 4-Yr	2	0	0	0	0
Accountancy Transfer	42	0	0	0	0
Undeclared	62	0	0	0	0
Off-Campus Total	106	0	0	0	0
<i>DEPARTMENT TOTAL</i>	298	0	0	0	0
COMPUTER INFORMATION SYSTEMS *					
Administrative Assistant	4	0	0	0	0
CIS 4-Yr	149	0	0	0	0
CIS 4-Yr Transfer	31	0	0	0	0
CIS Accounting 4-Yr	4	0	0	0	0
CIS Management 4-Yr	18	0	0	0	0
CIS Marketing 4-Yr	2	0	0	0	0
Court Reporting	9	0	0	0	0
Master CIS Mgt Conditional	1	0	0	0	0
Masters Info Sys Mgt	5	0	0	0	0
Masters Info Sys Mgt Conditional	10	0	0	0	0
Office Auto Systems Transfer	6	0	0	0	0
Office Automation Systems	2	0	0	0	0
On-Campus Total	241	0	0	0	0
OFF-CAMPUS					
CIS 4-Yr	12	0	0	0	0
Master CIS Conditional	5	0	0	0	0
Masters Information Systems Mgt	25	0	0	0	0
Masters Info Sys Mgt Conditional	21	0	0	0	0
Off-Campus Total	63	0	0	0	0
<i>DEPARTMENT TOTAL</i>	304	0	0	0	0

STUDENTS/ENROLLMENT

COLLEGE	1995/96	1996/97	1997/98	1998/99	1999/00
BUSINESS					
ACCOUNTANCY/CIS*					
Accntncy (Public Acct.Track) B.E.S.T.	0	0	0	1	2
Accountancy 4-Yr	0	107	91	88	94
Accountancy CIS 4-Yr	0	31	20	28	28
Accountancy Finance 4-Yr	0	19	23	23	17
Accountancy Transfer	0	10	5	3	1
Administrative Assistant	0	2	0	0	0
CIS 4-Yr	0	173	185	209	257
CIS 4-Yr Transfer	0	25	15	2	2
CIS/Management B.E.S.T.	0	0	0	1	0
CIS Management 4-Yr	0	11	8	15	10
CIS Marketing 4-Yr	0	2	5	5	9
Computer Literacy	0	0	1	0	0
Master CIS Management Cond	0	1	0	0	0
Masters Info Sys Mgt Conditional	0	3	1	1	44
Masters Information Systems Mgt	0	2	0	0	22
Office Automation Systems	0	3	2	1	0
Office Automation Systems Transfer	0	2	0	0	0
Quality & Productivity Management	0	0	0	0	1
On-Campus Total	0	391	356	377	487
OFF-CAMPUS					
AS/400 Computer Programming	0	0	0	0	37
CIS 4-Yr	0	24	45	47	67
Accountancy 4-Yr	0	4	8	1	1
Accountancy Transfer	0	42	44	39	43
Undeclared	0	29	52	67	38
Masters Information Systems Mgt	0	30	108	73	34
Masters Info Systems Mgt Cond	0	36	0	43	25
Off-Campus Total	0	165	257	270	245
 <i>DEPARTMENT TOTAL</i>	 0	 556	 613	 647	 732

*Accountancy Dept. & CIS Dept. changed to Accountancy/CIS Dept. (one dept) Winter Semester 1996

STUDENTS/ENROLLMENT

COLLEGE	1995/96	1996/97	1997/98	1998/99	1999/00
BUSINESS					
MANAGEMENT					
Business Administration	201	148	156	192	183
Business Admin Transfer	38	33	18	4	2
Finance 4-Yr	35	20	27	37	38
Finance Transfer	4	4	0	0	0
General Business 2-Yr	119	123	146	144	143
General Business Certificate	0	0	2	2	1
Human Resource Mgt	24	36	27	60	58
Human Resource Mgt Transfer	3	6	6	1	0
Insurance 4-Yr	7	11	12	14	10
Insurance/Real Estate 4-Yr	12	14	14	11	11
Insurance Transfer	2	1	0	0	0
International Business	50	41	43	34	27
International Business Transfer	3	1	1	0	0
International Business Studies Cert	1	1	2	0	0
Legal Assistant	35	26	29	30	37
Management	61	64	64	67	52
Management Transfer	8	10	5	2	1
Operations Management	5	2	4	3	3
Operations Management Transfer	4	1	0	0	0
Personnel Mgt/Ind Relations	1	0	0	0	0
Quantitative Business	1	2	2	0	0
Real Estate 2-Yr	11	7	5	6	7
Real Estate Certificate	1	1	0	0	0
Small Business Management Cert	0	1	0	0	0
Small Business Management 4-Yr	34	33	35	40	39
Small Business Management Trans	8	9	5	3	5
On-Campus Total	668	595	603	650	617
OFF-CAMPUS					
Business Administration	1	7	6	2	1
Business Administration Transfer	126	88	76	94	95
International Business Studies Cert	5	2	1	1	0
Off-Campus Total	132	97	83	97	96
<i>DEPARTMENT TOTAL</i>	800	692	686	747	713
DIVERSIFIED BUSINESS					
Accelerated Business	0	1	1	1	0
Diversified Business	1	0	0	0	0
<i>DEPARTMENT TOTAL</i>	1	1	1	1	0

STUDENTS/ENROLLMENT

COLLEGE	1995/96	1996/97	1997/98	1998/99	1999/00
BUSINESS					
MARKETING					
Advertising	72	59	68	79	76
Advertising Certificate	0	0	1	0	0
Advertising Transfer	13	7	3	1	1
Food Service Management **	57	62	56	56	0
Hospitality Management *	59	34	25	27	0
Hotel Management *	0	0	0	0	24
Marketing Cert	0	0	0	1	0
Marketing PGM 4-Yr	281	262	287	290	293
Marketing PTM 4-Yr	69	65	73	74	71
Marketing 2-Yr	1	0	0	0	0
Marketing 4-Yr	76	82	83	106	91
Marketing Transfer	7	7	3	1	0
Marketing Retail	4	1	0	0	0
Marketing Sales	35	30	33	39	43
Marketing Sales Transfer	5	6	0	0	0
Music Industry Management	1	10	15	35	49
Pre-PGM	77	78	54	41	37
Public Relations	33	35	33	32	39
Public Relations Transfer	5	3	1	1	0
Resort Management	0	0	0	0	3
Restaurant & Food Industry Mgmt **	0	0	0	0	51
Retailing 2-Yr	7	4	4	2	6
Retailing 4-Yr	15	14	17	16	17
Retailing Transfer	1	1	0	0	0
Pre-Visual Communications	0	0	0	0	1
Visual Communications 2-Yr	70	84	102	106	99
Visual Communications 4-Yr	36	36	29	36	43
On-Campus Total	924	880	887	943	944
OFF-CAMPUS					
Advan Studies in Global Logistics	0	0	0	0	8
Marketing Transfer	15	7	15	16	13
Marketing	0	0	1	1	0
Multimedia Production Cert	0	0	0	0	9
Visual Communications	0	0	5	5	0
Off-Campus Total	15	7	21	22	30
DEPARTMENT TOTAL	939	887	908	965	974
ON-CAMPUS TOTAL	2,026	1,867	1,849	1,971	2,048
OFF-CAMPUS TOTAL	316	269	361	389	371
COLLEGE TOTAL	2,342	2,136	2,210	2,360	2,419

* Hospitality Management changed to Hotel Management Fall 1999

** Food Service Management changed to Restaurant & Food Industry Management Fall 1999

STUDENTS/ENROLLMENT

ENROLLMENT BY PROGRAM FALL SEMESTER

COLLEGE	1995/96	1996/97	1997/98	1998/99	1999/00
EDUCATION					
OCCUPATIONAL EDUCATION					
Allied Health Education	9	8	5	7	6
Biology Education	33	39	41	48	52
Business Education	54	51	48	36	29
Business Edu Gen Business	3	1	1	0	0
Certification	6	9	17	24	12
Certification Graduate	0	0	0	0	1
Chemistry Education	6	7	6	9	9
Curriculum and Instruction	0	0	0	0	28
English Education	0	0	71	102	129
Master Career/Technical Edu	17	14	20	15	21
Master Career/Tech Educ Prov	9	5	1	1	1
Mathematics Education	58	47	57	65	58
Pre-Teaching Elementary	63	61	65	63	87
Pre-Teaching Secondary	70	67	52	48	70
Science Education	0	2	0	0	0
Technical Education	16	13	16	13	22
Training in Business & Industry	2	2	1	2	2
Undeclared	1	1	0	0	0
Wage Earning Home Econ	2	5	4	2	3
On-Campus Total	349	332	405	435	530
OFF-CAMPUS					
Allied Health Education	7	9	7	4	4
Biology Education	6	6	4	7	6
Business Education	15	13	13	12	12
Certification	10	20	18	36	42
Certification Graduate	1	0	0	1	1
Chemistry Education	2	2	2	2	3
English Education	0	0	15	22	24
Master Career/Technical Edu	25	25	37	46	52
Master Occupational Education	0	9	5	4	1
Master Occupational Edu Prov	5	0	0	0	1
Mathematics Education	8	7	10	15	11
Technical Education	8	7	8	18	19
Training in Business & Industry	2	0	0	0	0
Undeclared - Undergrad	18	19	24	31	29
Undeclared - Graduate	25	28	45	36	30
Wage Earning Home Econ	3	3	0	4	3
Off-Campus Total	135	148	188	238	238
DEPARTMENT TOTAL	484	480	593	673	768

STUDENTS/ENROLLMENT

COLLEGE	1995/96	1996/97	1997/98	1998/99	1999/00
EDUCATION					
TELEVISION PRODUCTION					
Television Production	77	42	38	57	66
<i>DEPARTMENT TOTAL</i>	77	42	38	57	66
LEISURE STUDIES					
Recreation Leadership & Mgt	82	89	77	77	73
<i>DEPARTMENT TOTAL</i>	82	89	77	77	73
CHILD DEVELOPMENT					
Child Development	59	61	60	58	63
<i>DEPARTMENT TOTAL</i>	59	61	60	58	63
CRIMINAL JUSTICE					
Criminal Justice	225	208	214	225	221
Pre-Criminal Justice AA	374	354	325	303	321
Master Criminal Justice Admin	0	0	31	30	34
On-Campus Total	599	562	570	558	576
OFF-CAMPUS					
Criminal Justice	0	0	0	0	8
Master Criminal Justice Admin	0	0	0	9	21
Off-Campus Total	0	0	0	9	29
<i>DEPARTMENT TOTAL</i>	599	562	570	567	605
ON-CAMPUS TOTAL	1,166	1,086	1,150	1,185	1,308
OFF-CAMPUS TOTAL	135	148	188	247	267
COLLEGE TOTAL	1,301	1,234	1,338	1,432	1,575

STUDENTS/ENROLLMENT

ENROLLMENT BY PROGRAM FALL SEMESTER

COLLEGE	1995/96	1996/97	1997/98	1998/99	1999/00
OPTOMETRY					
PROFESSIONAL					
O.D. Optometry	130	130	127	124	123
<i>DEPARTMENT TOTAL</i>	130	130	127	124	123
TECHNICAL					
Optometric Technician	4	0	0	0	0
Opticianry *	23	22	25	28	0
<i>DEPARTMENT TOTAL</i>	27	22	25	28	0
COLLEGE TOTAL	157	152	152	152	123

* Opticianry moved to College of Allied Health Sciences beginning Fall 1999

COLLEGE	1995/96	1996/97	1997/98	1998/99	1999/00
PHARMACY					
BS PHARMACY					
BS Pharmacy	424	430	413	400	397
<i>DEPARTMENT TOTAL</i>	424	430	413	400	397
PHARMACY D					
Pharm D Add On*	9	13	14	11	8
Pharm D Track In*	8	7	4	16	32
<i>DEPARTMENT TOTAL</i>	17	20	18	27	40
COLLEGE TOTAL	441	450	431	427	437

*Pharm D Add On and Track In options belong to Pharmacy D program

STUDENTS/ENROLLMENT

COLLEGE	1995/96	1996/97	1997/98	1998/99	1999/00
TECHNOLOGY					
ELECTRICAL					
Elec/E'tronics Eng Tech	66	0	0	0	0
Industrial Electronics	68	0	0	0	0
Pre-Elec/E'tronics Eng	3	0	0	0	0
Pre-Indust Elect Tech	14	0	0	0	0
On-Campus Total	151	0	0	0	0
OFF-CAMPUS					
Elec/E'tronics Eng Tech	9	0	0	0	0
Off-Campus Total	9	0	0	0	0
<i>DEPARTMENT TOTAL</i>	160	0	0	0	0
PRINTING					
Printing Technology	85	0	0	0	0
Printing Management	46	0	0	0	0
<i>DEPARTMENT TOTAL</i>	131	0	0	0	0
MANUFACTURING ENG					
Manufacturing Engineering	49	0	0	0	0
Manufacturing Tool	36	0	0	0	0
Mechanical Engineering	59	0	0	0	0
Plastics Tech 2-Yr	109	0	0	0	0
Plastics Eng Tech 4-Yr	93	0	0	0	0
Pre-Mechanical Eng	6	0	0	0	0
Pre-Mfg Engineering Tech	4	0	0	0	0
Pre-Mfg Tooling	3	0	0	0	0
Pre-Plastics Engineering	37	0	0	0	0
Pre-Plastics Tech	33	0	0	0	0
Pre-Product Design Eng	2	0	0	0	0
Pre-Tech Draft /Tool	2	0	0	0	0
Pre-Welding Eng	2	0	0	0	0
Product Design Eng	43	0	0	0	0
Technical Drafting	71	0	0	0	0
Technical Illustration	3	0	0	0	0
Welding 2-Yr	54	0	0	0	0
Welding 4-Yr	39	0	0	0	0
On-Campus Total	645	0	0	0	0
OFF-CAMPUS					
Manufacturing Eng	60	0	0	0	0
Plastic Eng Tech 4-Yr	5	0	0	0	0
Product Design Eng	18	0	0	0	0
Quality Tech	5	0	0	0	0
Off-Campus Total	88	0	0	0	0
<i>DEPARTMENT TOTAL</i>	733	0	0	0	0
UNDECLARED	75	0	0	0	0
ON-CAMPUS TOTAL	1,935	0	0	0	0
OFF-CAMPUS TOTAL	142	0	0	0	0
COLLEGE TOTAL	2,077	0	0	0	0

STUDENTS/ENROLLMENT

COLLEGE	1995/96	1996/97	1997/98	1998/99	1999/00
TECHNOLOGY					
CONSTRUCTION & FACILITIES*					
Architectural Technology	0	88	95	87	85
Building Construction Technology	0	39	43	50	48
Civil Engineering Technology	0	14	13	11	16
Construction Management	0	124	141	160	181
Construction Management Transfer	0	2	0	0	0
Facilities Management	0	13	18	20	20
HVACR Engineering Tech	0	50	61	62	70
HVACR Technology	0	72	89	86	65
Pre-Architectural Technology	0	20	10	20	11
Pre-Building Construction Tech	0	16	19	9	7
Pre-Civil Engineering Technology	0	5	3	5	4
Pre-Construction Management	0	24	17	26	22
Pre-Facilities Management	0	1	4	2	0
Pre-HVACR Engineering Tech	0	2	1	0	1
Pre-HVACR Technology	0	36	24	18	21
Pre-Surveying Engineering	0	4	3	5	3
Pre-Surveying Technology	0	3	2	2	3
Surveying Engineering	0	80	81	80	83
Surveying Technology	0	28	17	12	12
On-Campus Total	0	621	641	655	652
OFF-CAMPUS					
Construction Administration Cert	0	5	4	3	10
Construction Management	0	16	18	12	15
Facilities Management	0	13	5	1	1
Facilities Management Certificate	0	0	11	10	13
HVACR Engineering	0	23	18	23	23
Off-Campus Total	0	57	56	49	62
 <i>DEPARTMENT TOTAL</i>	 0	 678	 697	 704	 714

STUDENTS/ENROLLMENT

COLLEGE	1995/96	1996/97	1997/98	1998/99	1999/00
TECHNOLOGY					
DESIGN, MFG & GRAPHIC ARTS*					
Manufacturing Engineering Tech	0	51	41	43	46
Manufacturing Tooling Tech	0	62	68	58	65
Mechanical Engineering Tech	0	51	45	46	47
Plastics Engineering Technology	0	88	75	58	75
Plastics Technology	0	116	132	141	130
Pre-Mechanical Engineering	0	10	6	7	5
Pre-Manufacturing Engineer Tech	0	1	2	3	3
Pre-Manufacturing Tooling Tech	0	4	1	1	2
Pre-Plastics Engineering	0	26	16	9	2
Pre-Plastics Technology Tech	0	34	13	17	19
Pre-Product Design Engineering	0	2	3	6	4
Pre-Technical Draft /Tool Design	0	4	2	5	4
Pre-Welding Tech	0	2	0	2	1
Printing Management	0	34	34	33	34
Printing & Digital Graphic Imaging Tech	0	84	61	82	84
Product Design Engineering Tech	0	47	52	49	42
Rubber Technology	0	0	0	13	42
Technical Drafting & Tool Design	0	67	71	69	67
Technical Illustration	0	2	0	0	0
Welding Technology	0	58	43	53	55
Welding Technology Cert.	0	0	0	1	0
Welding Engineering Technology	0	43	43	46	55
On-Campus Total	0	786	708	742	782
OFF-CAMPUS					
Manufacturing Engineering Tech	0	69	62	60	55
Plastic Engineering Technology	0	4	3	4	2
Product Design Engineering Tech	0	40	31	26	30
Quality Engineering Technology	0	8	7	13	6
Quality Technology Cert.	0	5	2	1	0
Off-Campus Total	0	126	105	104	93
<i>DEPARTMENT TOTAL</i>	0	912	813	846	875

STUDENTS/ENROLLMENT

COLLEGE	1995/96	1996/97	1997/98	1998/99	1999/00
TECHNOLOGY					
TRANSPORTATION & ELECTRONICS*					
Automotive Body	0	42	41	50	39
Auto & Heavy Equipment Mgt	0	84	66	66	79
Automotive Machine Technology	0	1	0	0	0
Automotive Service Technology	0	148	166	167	162
Computer Networks & Systems	0	17	43	60	70
Electrical/Electronics Eng Tech	0	44	39	38	32
Heavy Equipment Service Eng Tech	0	18	33	29	21
Heavy Equipment Technology	0	107	114	80	72
Industrial Electronics Technology	0	63	76	74	54
Pre-Auto & Heavy Equipment Mgt	0	0	2	2	3
Pre-Automotive Service Technology	0	5	13	14	7
Pre-Computer Networks & Systems	0	2	8	5	15
Pre-Electrical/Electronics Eng Tech	0	2	2	1	2
Pre-Heavy Equipment Service Eng Tech	0	0	0	0	1
Pre-Heavy Equipment Technology	0	0	0	15	22
Pre-Industrial Electronics Tech	0	25	16	24	15
On-Campus Total	0	558	619	625	594
OFF-CAMPUS					
Auto & Heavy Equipment Mgt	0	12	15	17	11
Electrical/Electronics Eng Tech	0	10	6	1	1
Off-Campus Total	0	22	21	18	12
<i>DEPARTMENT TOTAL</i>	0	580	640	643	606
UNDECLARED - OFF CAMPUS	0	68	54	41	29
ON-CAMPUS TOTAL	0	1,965	1,968	2,022	2,028
OFF-CAMPUS TOTAL	0	273	236	212	196
COLLEGE TOTAL	2,077	2,238	2,204	2,234	2,224

*Department reorganization effective Fall 1996

STUDENTS/ENROLLMENT

Average HSGPA and ACT Scores Fall 1995 - 1999

	<u>1995</u>	<u>1996</u>	<u>1997</u>	<u>1998</u>	<u>1999</u>
<u>High School GPA</u>	2.70	2.70	2.80	2.82	2.85
<u>ACT</u>					
Composite:	18.4	18.4	19.2	19.0	19.2
English:	17.2	17.1	17.9	17.8	17.9
Math:	17.8	18.1	19.0	19.0	19.1
Reading:	18.6	18.6	19.3	19.9	19.2
Sci. Reasoning:	19.4	19.5	20.2	19.0	19.9

Source: Assessment Services and Enrollment Research

Degrees

DEGREES/PROGRAMS

DEGREES CONFERRED BY PROGRAM ACADEMIC YEAR (SUMMER, FALL, WINTER SEMESTERS)

	1996-97				1997-98				1998-99			
	CERT	AS	BS	MS	CERT	AS	BS	MS	CERT	AS	BS	MS
ALLIED HEALTH SCI												
ALLIED DENTAL												
Dental Hygiene		54				55				62		
Dental Technician		<u>8</u>				<u>12</u>				<u>6</u>		
TOTAL		62				67				68		
ENVIRONMENTAL/CLINICAL SCI												
Ind & Env Health Mgt			23				32				22	
Medical Lab Tech		12				17				11		
Medical Tech		<u> </u>	<u>10</u>			<u> </u>	<u>26</u>			<u> </u>	<u>19</u>	
TOTAL		12	33			17	58			11	41	
HEALTH MANAGEMENT												
Health Care Systems Admin			27				32				38	
Health Info Mgt			20				18				14	
Health Info Tech		<u>36</u>	<u> </u>			<u>24</u>	<u> </u>			<u>25</u>	<u> </u>	
TOTAL		36	47			24	50			25	52	
HOSPITAL RELATED												
Nuclear Med Tech		20	11			21	10			18	12	
Radiography		50				50				49		
Respiratory Care		<u>19</u>	<u> </u>			<u>14</u>	<u> </u>			<u>17</u>	<u> </u>	
TOTAL		89	11			85	10			84	12	
NURSING												
Nursing		<u>37</u>	<u>49</u>			<u>49</u>	<u>53</u>			<u>59</u>	<u>62</u>	
TOTAL		37	49			49	53			59	62	
COLLEGE TOTAL		236	140			242	171			247	167	

DEGREES/PROGRAMS

DEGREES CONFERRED BY PROGRAM ACADEMIC YEAR (SUMMER, FALL, WINTER SEMESTERS)

	1996-97				1997-98				1998-99			
	CERT	AS	BS	MS	CERT	AS	BS	MS	CERT	AS	BS	MS
ARTS & SCIENCES												
BIOLOGICAL SCIENCES												
Applied Biology			25				31				27	
Biotechnology			9				9				7	
Ornamental Horticulture		10				8				11		
TOTAL		<u>10</u>	<u>34</u>			<u>8</u>	<u>40</u>			<u>11</u>	<u>34</u>	
GENERAL STUDIES												
Liberal Arts		33				16				28		
Pre-Dentistry		1				2						
Pre-Engineering		1										
Pre-Law						3						
Pre-Mort Science		2										
Pre-Optometry		8				5				3		
Pre-Pharmacy		5				9				10		
Pre-Science		7				7				3		
Pre-Veterinary		1										
TOTAL		<u>58</u>				<u>42</u>				<u>44</u>		
HUMANITIES												
Applied Speech Comm						6					8	
TOTAL						<u>6</u>					<u>8</u>	
LANGUAGE & LITERATURE												
Journalism		3				3				1		
Technical Communication			5				5				2	
TOTAL		<u>3</u>	<u>5</u>			<u>3</u>	<u>5</u>			<u>1</u>	<u>2</u>	
MATHEMATICS												
Actuarial Sci Math			1				2					
Applied Math			4									
TOTAL			<u>5</u>				<u>2</u>					
PHYSICAL SCIENCES												
Industrial Chem Tech		14				12				8		
TOTAL		<u>14</u>				<u>12</u>				<u>8</u>		
SOCIAL SCIENCES												
Public Administration											2	
Social Work			40				42				33	
TOTAL			<u>40</u>				<u>42</u>				<u>35</u>	
COLLEGE TOTAL		85	84			71	89			64	79	

DEGREES CONFERRED BY PROGRAM
ACADEMIC YEAR (SUMMER, FALL, WINTER SEMESTERS)

	1996-97				1997-98				1998-99			
	CERT	AS	BS	MS	CERT	AS	BS	MS	CERT	AS	BS	MS
BUSINESS												
ACCOUNTANCY/CIS												
Accountancy			46				42				30	
Accountancy/Finance			2				3				5	
Admin Assistant		3										
Accountancy/CIS			6				3				2	
AS/400 Computer Programming									8			
Computer Info Systems			33				36				52	
CIS/M			3								3	
Computer Literacy					1							
Court/Freelance Reporting		3										
Executive Secretary										1		
Info Systems Management				23				74				52
Midrange Computer									1			
Office Automation Sys			2				3					
Quality Improvement for Manage	<u>1</u>				<u>2</u>				<u>2</u>			
TOTAL	1	6	92	23	3		87	74	11	1	92	52
MANAGEMENT												
Accelerated Business											1	
Business Administration			108				80				73	
Business Skills Applied Math	10											
Finance			9				7				6	
General Business		18				29				33		
Human Resource Mgt			9				14				9	
Insurance			5				4				4	
Insurance/Real Estate			3				4				2	
International Business	10		10		5		7		5		4	
Legal Assistant		9				8				6		
Management			15				10				8	
Operations Mgt			3				3				3	
Quantitative Business							1					
Real Estate	8	9			2	2			1	3		
Small Business Mgt	1		12		4		6		4		5	
Supervision					3							
TOTAL	29	36	174		14	39	136		10	42	115	
MARKETING												
Advanced Studies Global Logistics									1			
Advertising			21				18				8	
Direct Marketing					1				10			
Food Service Mgt		18				13				15		
Hospitality Management			25				19				7	
Marketing	1		22				17		4		24	
Marketing/PGM			80				56				46	
Marketing/PTM			12				16				9	
Marketing/Sales			15				9		1		11	
Multimedia Production	1				3				5			
Music Industry Mgt							1				1	
Public Relations			10				5				6	
Retailing	19		7		18	2	1		13	1		
Visual Communication		<u>13</u>	<u>16</u>			<u>12</u>	<u>12</u>			<u>17</u>	<u>8</u>	
TOTAL	21	31	208		22	27	154		34	33	120	
COLLEGE TOTAL	51	73	474	23	39	66	377	74	55	76	327	52

DEGREES/PROGRAMS

DEGREES CONFERRED BY PROGRAM ACADEMIC YEAR (SUMMER, FALL, WINTER SEMESTERS)

	1996-97				1997-98				1998-99				
	CERT	AS	BS	MS	CERT	AS	BS	MS	CERT	AS	BS	MS	
EDUCATION													
CHILD DEVELOPMENT													
Child Development		<u>8</u>				<u>17</u>				<u>13</u>			
TOTAL		8				17				13			
CRIMINAL JUSTICE													
Criminal Justice Administration												3	
Criminal Justice			103			102				92			
Forensics Science									1				
Pre-Criminal Justice		<u>70</u>				<u>84</u>				<u>83</u>			
TOTAL		70	103			84	102		1	83	92	3	
LEISURE STUDIES & WELLNESS													
Recreation Leadership & Mgt			<u>12</u>			<u>17</u>				<u>20</u>			
TOTAL			12			17				20			
OCCUPATIONAL EDUCATION													
Allied Health Education			5			4				2			
Biology Education			13			3				6			
Business Education			10			16				9			
Career & Technical Education				20			23					28	
Chemistry Education			3										
English Education						1				13			
Mathematics Education			7			10				8			
Pre-Teach Elementary		5			6				3				
Pre-Teach Secondary		11			5				5				
Technical Education			7			10				7			
Training Bus & Industry Edu			2			1							
Wage Earning Home Econ Edu			<u>2</u>			<u>1</u>				<u>4</u>			
TOTAL		16	49	20		11	46	23		8	49	28	
TELEVISION PRODUCTION													
TV Production			<u>18</u>			<u>19</u>				<u>11</u>			
TOTAL			18			19				11			
COLLEGE TOTAL													
		94	182	20		112	184	23		1	104	172	31

DEGREES/PROGRAMS

DEGREES CONFERRED BY PROGRAM ACADEMIC YEAR (SUMMER, FALL, WINTER SEMESTERS)

	1996-97				1997-98				1998-99			
	CERT	AS	BS	OD	CERT	AS	BS	OD	CERT	AS	BS	OD
OPTOMETRY												
Opticianry		8				9				7		
Optometry				32				34				32
Visual Science			13				20				9	
COLLEGE TOTAL		8	13	32		9	20	34		7	9	32

DEGREES CONFERRED BY PROGRAM ACADEMIC YEAR (SUMMER, FALL, WINTER SEMESTERS)

	1996-97				1997-98				1998-99			
	CERT	AS	BS	Pharm D	CERT	AS	BS	Pharm D	CERT	AS	BS	Pharm D
PHARMACY												
Pharmacy			141	9			127	6			116	9
COLLEGE TOTAL			141	9			127	6			116	9

DEGREES/PROGRAMS

DEGREES CONFERRED BY PROGRAM ACADEMIC YEAR (SUMMER, FALL, WINTER SEMESTERS)

	1996-97				1997-98				1998-99			
	CERT	AS	BS	MS	CERT	AS	BS	MS	CERT	AS	BS	MS
TECHNOLOGY												
CONSTRUCTION & FACILITIES												
Advanced Construction Mgmt										2		
Architectural Tech		28				28				27		
Building Const Tech		22				9				27		
Civil Eng Tech		12				4				9		
Construction Administration					9							
Construction Management			34				30				26	
Facilities Management	9		8		9		15		19		12	
Field Engineering					4				1			
Geographic Information									12			
HVACR Eng Tech			19				31				22	
HVACR Technology		20				32				39		
Project Management	3				1							
Surveying Engineering			20				21				23	
Surveying Tech		4				3				3		
TOTAL	12	86	81		23	76	97		34	105	83	
DESIGN, MFG & GRAPHIC ARTS												
Mfg Tooling Tech		5				20				15		
Manufacturing Eng Tech			24				16				31	
Mech Eng Technology		17				11				13		
Plastics Engineering Tech			69				55				46	
Plastics Technology		52				49				55		
Printing Management			21				17				14	
Printing & Digital Graphic Imaging		19				13				20		
Product Design Eng Tech			23				36				23	
Quality Technology	8				14				4			
Tech Draft/Tool Design		17				27				25		
Technical Illustration		2				1				2		
Welding Eng Technology			16				22				18	
Welding Technology		14				22				10		
TOTAL	8	126	153		14	143	146		4	140	132	

DEGREES/PROGRAMS

DEGREES CONFERRED BY PROGRAM ACADEMIC YEAR (SUMMER, FALL, WINTER SEMESTERS)

	1996-97				1997-98				1998-99			
	CERT	AS	BS	MS	CERT	AS	BS	MS	CERT	AS	BS	MS
TECHNOLOGY												
TRANSPORTATION & ELECT												
Automotive Body		3				15				13		
Auto & Heavy Equip Mgt			36				33				24	
Auto Machine Tech		1										
Auto Service Tech		22				52				39		
Avionics Tech		1										
Computer Networks & Systems			1				3				2	
Electrical/Electronics Eng			18				24				16	
Electrical Power Generation					6				2			
Heavy Equipment Serv			5				10				13	
Heavy Equipment Tech		34				26				33		
Industrial Elect Tech		<u>17</u>	<u> </u>		<u> </u>	<u>11</u>	<u> </u>		<u> </u>	<u>11</u>	<u> </u>	
TOTAL		78	60		6	104	70		2	96	55	
COLLEGE TOTAL	20	290	294		43	323	313		40	341	270	

Source: Office of Institutional Research, Paradox, GRADS/9899/degbyprg.rsl (1998-99)

Source: Office of Institutional Studies, Paradox, GRADS/9798/degbyprg.rsl (1997-98)

Source: Office of Institutional Studies, Paradox, GRADS/9697/degbyprg.rsl (1996-97)

DEGREES/PROGRAMS

DEGREES CONFERRED AT FERRIS STATE UNIVERSITY

ACADEMIC YEAR (SUMMER, FALL, WINTER SEMESTERS)

	CERT	ASSOCIATE	BACHELOR	MASTERS	DOCTORATE	TOTAL
1986-1987	5	1,119	1,514	15	30	2,683
1987-1988	3	1,040	1,521	20	35	2,619
1988-1989	2	1,040	1,559	32	30	2,663
1989-1990	6	1,177	1,721	27	33	2,964
1990-1991	9	1,107	1,662	31	33	2,842
1991-1992	13	1,156	1,790	36	36	3,031
1992-1993	7	1,295	1,898	38	35	3,273
1993-1994	8	975	1,789	27	36	2,835
1994-1995	11	948	1,661	34	40	2,694
1995-1996	53	860	1,438	40	35	2,426
1996-1997	71	786	1,328	43	41	2,269
1997-1998	82	823	1,281	97	40	2,323
1998-1999	96	839	1,140	83	41	2,199

Source: Office of Institutional Research, Paradox, grads/9899/degbyprg.rsl

Source: Office of Institutional Studies, Paradox, grads/9798/degbyprg.rsl

Source: Office of Institutional Studies, Paradox, grads/9697/degbyprg.rsl

Source: Office of Institutional Studies, Paradox, grads/9596/degbyprg.rsl

Source: Office of Institutional Studies, Paradox, GRADS.FBSTART.FSL beginning with 1992-93

Source: REGR 2456, Report for Year End, through 1992/93 year

*Changed to semester system Fall 1993

DEGREES/PROGRAMS

FERRIS STATE UNIVERSITY			
APPROVED PROGRAMS			
PROGRAM NAMES	COLLEGE	DEPARTMENT	DEGREE
Dental Hygiene	AHS	Allied Dental	AAS
Health Information Management	AHS	Health Management	BS
Health Information Technology	AHS	Health Management	AAS
Health Care Systems Administration	AHS	Health Management	BS
Indust & Environ Hlth Mgt/Gen Environ Hlth opt	AHS	Environmental/Clinical Sci	BS
Indust & Environ Hlth Mgt/Haz Waste Mgt opt	AHS	Environmental/Clinical Sci	BS
Indust & Environ Hlth Mgt/Indust Hygiene opt	AHS	Environmental/Clinical Sci	BS
Indust & Environ Hlth Mgt/Indust Safety opt	AHS	Environmental/Clinical Sci	BS
Medical Laboratory Technology	AHS	Environmental/Clinical Sci	AAS
Medical Technology (Career Mobility)	AHS	Environmental/Clinical Sci	BS
Medical Technology (Integrated)	AHS	Environmental/Clinical Sci	BS
Nuclear Medicine Technology	AHS	Hospital Related	AAS
Nuclear Medicine Technology	AHS	Hospital Related	BS
Nursing	AHS	Nursing	AAS
Nursing	AHS	Nursing	BSN
Opticianry	AHS	Hospital Related	AAS
Radiography	AHS	Hospital Related	AAS
Respiratory Care	AHS	Hospital Related	AAS
Applied Biology	A/S	Biological Sciences	BS
Applied Biology/Environmental Biology track	A/S	Biological Sciences	BS
Applied Biology/Pre-Dentistry track	A/S	Biological Sciences	BS
Applied Biology/Pre-Medicine track	A/S	Biological Sciences	BS
Applied Biology/Pre-Physical Therapy track	A/S	Biological Sciences	BS
Applied Biology/Pre-Veterinary Medicine track	A/S	Biological Sciences	BS
Applied Biology/Sports Medicine track	A/S	Biological Sciences	BS
Applied Speech Communication	A/S	Humanities	AA
Applied Speech Communication	A/S	Humanities	BS
Applied Mathematics	A/S	Mathematics	BS
Applied Mathematics/Actuarial Science track	A/S	Mathematics	BS
Applied Mathematics/Computer Science track	A/S	Mathematics	BS
Applied Math/Operations Research track	A/S	Mathematics	BS
Applied Math/Statistics track	A/S	Mathematics	BS
Biotechnology	A/S	Biological Sciences	BS
French Culture	A/S	Language and Literature	CERT
Industrial Chemistry Technology	A/S	Physical Sciences	AAS

DEGREES/PROGRAMS

PROGRAM NAMES	COLLEGE	DEPARTMENT	DEGREE
Liberal Arts	A/S		AA
Ornamental Horticulture Technology	A/S	Biological Sciences	AAS
Pharmaceutical Chemical Technical	A/S	Physical Sciences	CERT
Pre-Engineering	A/S		AS
Pre-Law	A/S		AA
Pre-Mortuary Science	A/S		AS
Pre-Optometry	A/S		AS
Pre-Pharmacy	A/S		AS
Pre-Science	A/S	Mathematics	AS
Public Administration	A/S	Social Sciences	BS
Social Work	A/S	Social Sciences	BSW
Technical and Professional Communication	A/S	Language and Literature	BS
Accountancy/Cost/Managerial track	BUS	Accountancy/CIS	BS
Accountancy/Professionally Directed track	BUS	Accountancy/CIS	BS
Accountancy/Public Accounting track	BUS	Accountancy/CIS	BS
Accountancy/Computer Information Systems	BUS	Accountancy/CIS	BS
Accountancy/Finance	BUS	Accountancy/CIS	BS
Advertising	BUS	Marketing	BS
Advertising	BUS	Marketing	CERT
AS/400 Programing	BUS	Accountancy/CIS	CERT
Business Administration	BUS	Management	BS
Computer Information Systems	BUS	Accountancy/CIS	BS
Computer Information Systems/Mgmt	BUS	Accountancy/CIS	BS
Computer Information Systems/Marketing	BUS	Accountancy/CIS	BS
Computer Literacy	BUS	Accountancy/CIS	CERT
Direct Marketing	BUS	Marketing	CERT
Finance	BUS	Management	BS
Restaurant and Food Industry Management	BUS	Marketing	AAS
Restaurant and Food Industry Management	BUS	Marketing	CERT
General Business	BUS	Management	AAS
Global Logistics	BUS	Management	CERT
Hotel Management	BUS	Marketing	BS
Hotel Management	BUS	Marketing	CERT
Human Resource Management	BUS	Management	BS

DEGREES/PROGRAMS

PROGRAM NAMES	COLLEGE	DEPARTMENT	DEGREE
Info Systems Mgmt/Info Systems emphasis	BUS	Accountancy/CIS	MS
Info Systems Mgmt/Quality Improv emphasis	BUS	Accountancy/CIS	MS
Insurance	BUS	Management	BS
Insurance	BUS	Management	CERT
Insurance/Real Estate	BUS	Management	BS
International Business	BUS	Management	BS
International Business	BUS	Management	CERT
Investment Analysis	BUS	Management	CERT
Legal Assistant	BUS	Management	AAS
Mainframe Computer Programming	BUS	Accountancy/CIS	CERT
Management	BUS	Management	BS
Manufacturing Operations Management	BUS	Management	CERT
Marketing	BUS	Marketing	BS
Marketing	BUS	Marketing	CERT
Marketing/Music Industry Management	BUS	Marketing	BS
Marketing/Professional Golf Management	BUS	Marketing	BS
Marketing/Professional Tennis Management	BUS	Marketing	BS
Marketing Research	BUS	Marketing	CERT
Marketing/Sales	BUS	Marketing	BS
Marketing/Sales	BUS	Marketing	CERT
Midrange Computer	BUS	Accountancy/CIS	CERT
Multimedia Production	BUS	Marketing	CERT
Operations Management	BUS	Management	BS
Public Relations	BUS	Marketing	BS
Public Relations	BUS	Marketing	CERT
Quality & Productivity Management	BUS	Accountancy/CIS	BS
Quality Improvement for Managers	BUS	Economics and Applied Statistics	CERT
Real Estate	BUS	Management	AAS
Real Estate	BUS	Management	CERT
Resort Management	BUS	Marketing	BS
Small Business Management	BUS	Management	BS
Small Business Management	BUS	Management	CERT
Visual Communication	BUS	Marketing	AAS
Visual Communication	BUS	Marketing	BS
Allied Health Education	EDU	Occupational Education	BS
Athletic Coaching	EDU	Leisure Studies & Wellness	CERT

DEGREES/PROGRAMS

PROGRAM NAMES	COLLEGE	DEPARTMENT	DEGREE
Biology Education	EDU	Occupational Education	BS
Business Education/Mktg/Distributive	EDU	Occupational Education	BS
Business Education/General Business	EDU	Occupational Education	BS
Master of Sci in Career & Tech Edu/Admin Cert option	EDU	Occupational Education	MS
Master of Sci in Career & Tech Edu/Career & Tech Inst	EDU	Occupational Education	MS
Master of Sci in Career & Tech Edu/Educational Tech o	EDU	Occupational Education	MS
Master of Sci in Career & Tech Edu/Human Resource D	EDU	Occupational Education	MS
Master of Sci in Career & Tech Edu/Postsec Admin opt	EDU	Occupational Education	MS
Chemistry Education	EDU	Occupational Education	BS
Child Development	EDU	Child Development	AAS
Criminal Justice/Corrections option	EDU	Criminal Justice	BS
Criminal Justice/Generalist option	EDU	Criminal Justice	BS
Criminal Justice/Law Enforcement option	EDU	Criminal Justice	BS
Criminal Justice Administration	EDU	Criminal Justice	MS
English Education	EDU	Occupational Education	BS
Forensics Sciences/Clinical Crime Investigation	EDU	Criminal Justice	CERT
Master of Education/Secondary Certification opt	EDU	Occupational Education	MS
Master of Education/Subject Area opt	EDU	Occupational Education	MS
Mathematics Education	EDU	Occupational Education	BS
Pre-Criminal Justice	EDU	Criminal Justice	AA
Pre-Teaching Elementary	EDU	Occupational Education	AA
Pre-Teaching Secondary	EDU	Occupational Education	AA
Rec Leadership & Mgmt/Corp Fitness track	EDU	Leisure Studies & Wellness	BS
Rec Leadership & Mgmt/Leisure Serv Prog track	EDU	Leisure Studies & Wellness	BS
Rec Leadership & Mgmt/Outdoor/Adv Edu track	EDU	Leisure Studies & Wellness	BS
Rec Leadership & Mgmt/Sports Mgt track	EDU	Leisure Studies & Wellness	BS
Technical Education	EDU	Occupational Education	BS
Television Production	EDU	Television Production	BS
Training in Business and Industry	EDU	Occupational Education	BS
Wage Earning Home Economics Education	EDU	Occupational Education	BS
Optometry	OPT	Optometry	OD
Visual Science	OPT	Optometry	BS
Pharmacy	PHR	Pharmacy	BS
Doctor of Pharmacy	PHR	Pharmacy	Pharm.D.
Architectural Technology	TEC	Construction & Facilities	AAS
Automotive and Heavy Equipment Mgmt	TEC	Transportation & Elec	BS
Automotive Body	TEC	Transportation & Elec	AAS
Automotive Service Technology	TEC	Transportation & Elec	AAS
Automotive Serv Tech (Chrys Apprentice Program)	TEC	Transportation & Elec	AAS
Automotive Serv Tech (Ford ASSET)	TEC	Transportation & Elec	AAS
Automotive Serv Tech (General Motors ASEP)	TEC	Transportation & Elec	AAS

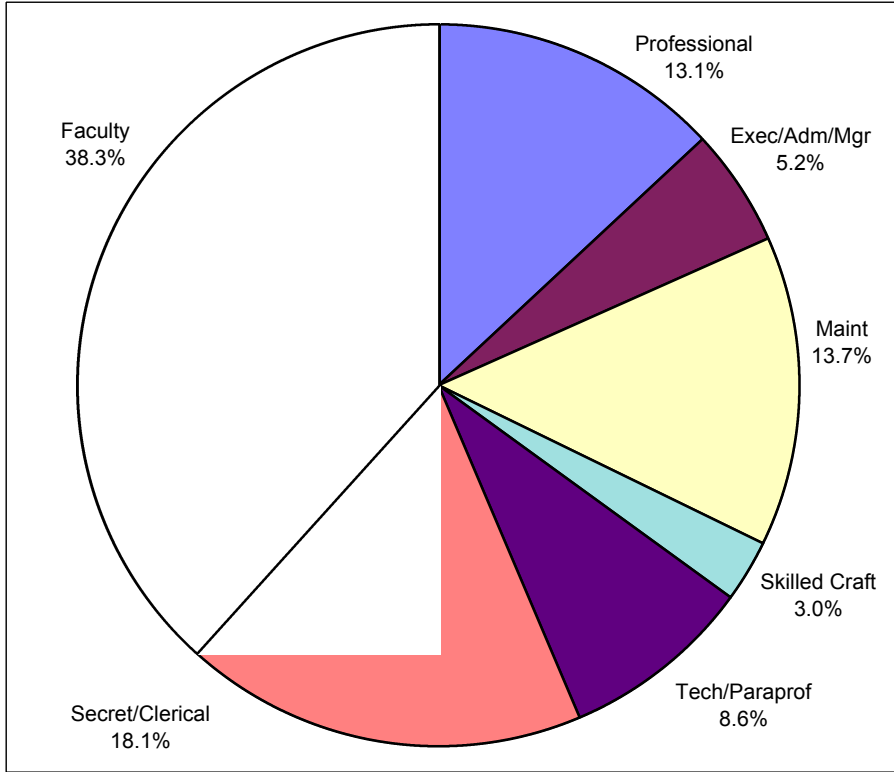
DEGREES/PROGRAMS

PROGRAM NAMES	COLLEGE	DEPARTMENT	DEGREE
Building Construction Technology	TEC	Construction & Facilities	AAS
Civil Engineering Technology	TEC	Construction & Facilities	AAS
Computer Networks & Systems/Communications	TEC	Transportation & Electronics	BS
Computer Networks & Systems/Embedded Systems	TEC	Transportation & Electronics	BS
Computer Networks & Systems/Industrial Automation	TEC	Transportation & Electronics	BS
Computer Networks & Systems/Information Systems	TEC	Transportation & Electronics	BS
Construction Administration	TEC	Construction & Facilities	CERT
Construction Management	TEC	Construction & Facilities	BS
Construction Mgmt/Highway/Bridge track	TEC	Construction & Facilities	BS
Construction Mgmt/Comm/Indust Bldg track	TEC	Construction & Facilities	BS
Customer Energy Specialist	TEC	Transportation & Electronics	CERT
Electrical/Electronics Eng Tech/Indust Automation track	TEC	Transportation & Electronics	BS
Electrical/Electronics Eng Tech//Communications track	TEC	Transportation & Electronics	BS
Electrical/Electronics Eng Tech/Digital track	TEC	Transportation & Electronics	BS
Facilities Management	TEC	Construction & Facilities	BS
Field Engineering	TEC	Construction & Facilities	CERT
Geographic Information System	TEC	Construction & Facilities	CERT
Heavy Equip Serv Engr Tech/Maint & Repair opt	TEC	Transportation & Electronics	BS
Heavy Equip Serv Engr Tech/Mfg option	TEC	Transportation & Electronics	BS
Heavy Equipment Technology	TEC	Transportation & Electronics	AAS
HVACR Engineering Technology	TEC	Construction & Facilities	BS
HVACR Technology	TEC	Construction & Facilities	AAS
Industrial Electronics Technology	TEC	Transportation & Electronics	AAS
Komatsu Equipment	TEC	Transportation & Electronics	CERT
Manufacturing Engineering Technology	TEC	Design, Mfg & Graphic Arts	BS
Manufacturing Tooling Technology	TEC	Design, Mfg & Graphic Arts	AAS
Mechanical Engineering Technology	TEC	Design, Mfg & Graphic Arts	AAS
Performance Machining	TEC	Transportation & Electronics	CERT
Plastics Engineering Technology	TEC	Design, Mfg & Graphic Arts	BS
Plastics Technology	TEC	Design, Mfg & Graphic Arts	AAS
Printing Management	TEC	Design, Mfg & Graphic Arts	BS
Printing & Digital Graphic Imaging Technology	TEC	Design, Mfg & Graphic Arts	AAS
Product Design Engineering Technology	TEC	Design, Mfg & Graphic Arts	BS
Project Management	TEC	Construction & Facilities	CERT
Quality Engineering Technology	TEC	Design, Mfg & Graphic Arts	BS
Quality Technology	TEC	Design, Mfg & Graphic Arts	CERT
Rubber Engineering Technology	TEC	Design, Mfg & Graphic Arts	BS
Rubber Technology	TEC	Design, Mfg & Graphic Arts	AAS
Surveying Engineering	TEC	Construction & Facilities	BS
Surveying Technology	TEC	Construction & Facilities	AAS
Technical Drafting and Tool Design	TEC	Design, Mfg & Graphic Arts	AAS
Welding Engineering Technology	TEC	Design, Mfg & Graphic Arts	BS
Welding Technology	TEC	Design, Mfg & Graphic Arts	AAS

Source: Academic Affairs, Fall 1999

Faculty/Staff

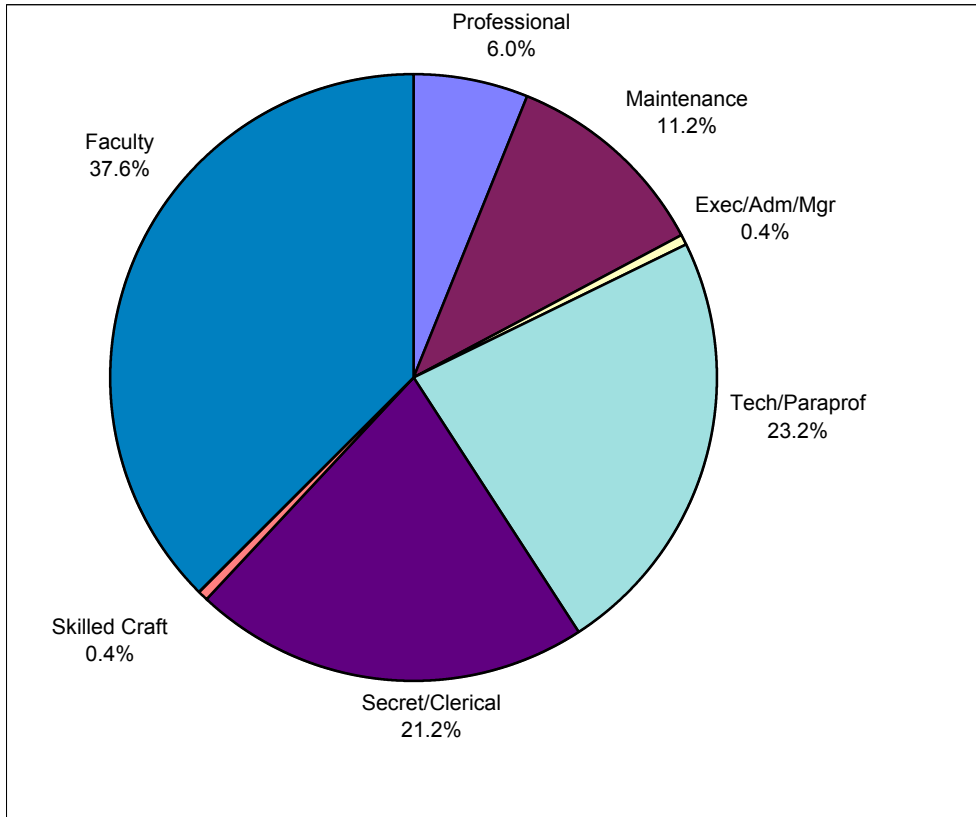
**UNIVERSITY STAFF BY JOB CATEGORY AND SEX
FULL-TIME**



JOB CATEGORY	MALE		FEMALE		TOTAL	
	NUMBER	PERCENT	NUMBER	PERCENT	NUMBER	PERCENT
Professional	91	60.3%	60	39.7%	151	13.1%
Exec/Adm/Mgr	43	71.7%	17	28.3%	60	5.2%
Faculty	336	76.4%	104	23.6%	440	38.3%
Secret/Clerical	3	1.4%	205	98.6%	208	18.1%
Tech/Paraprof	51	51.5%	48	48.5%	99	8.6%
Skilled Craft	33	97.1%	1	2.9%	34	3.0%
Maintenance	75	47.5%	83	52.5%	158	13.7%
TOTAL	632	55.0%	518	45.0%	1,150	100.0%

FACULTY/STAFF

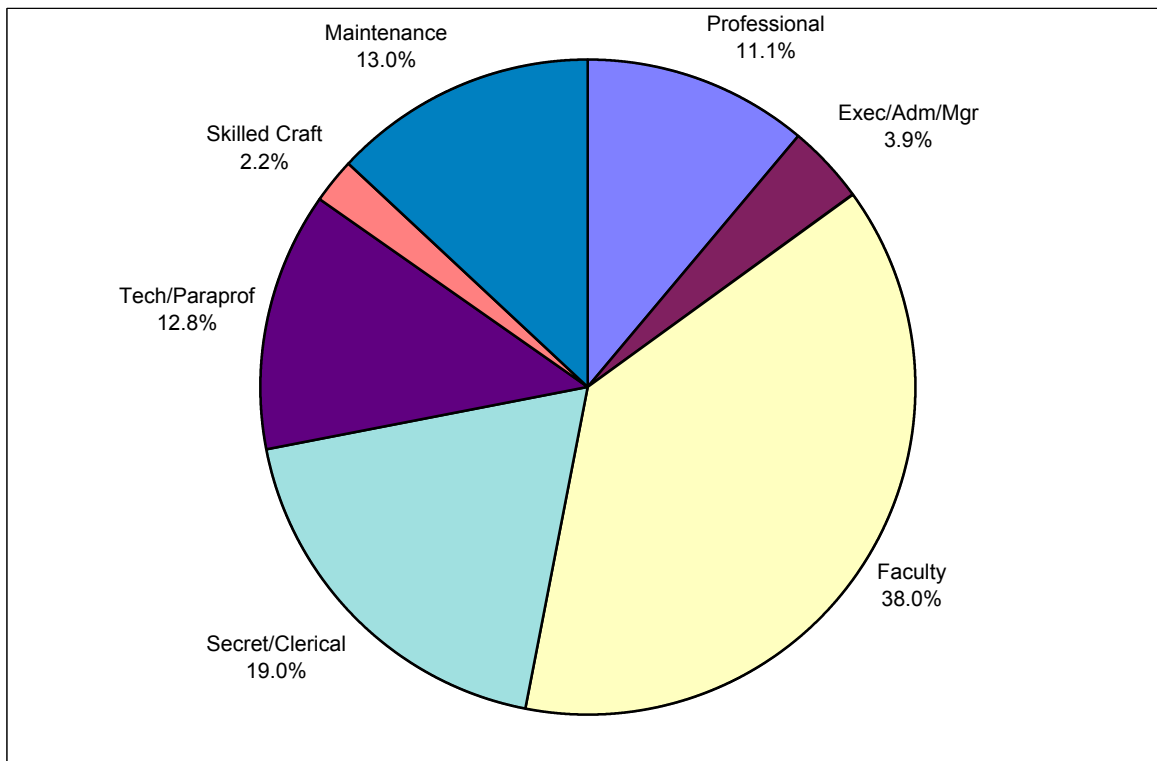
UNIVERSITY STAFF BY JOB CATEGORY AND SEX PART-TIME



JOB CATEGORY	MALE		FEMALE		TOTAL	
	NUMBER	PERCENT	NUMBER	PERCENT	NUMBER	PERCENT
Professional	12	44.4%	15	55.6%	27	6.0%
Exec/Adm/Mgr	2	100.0%	0	0.0%	2	0.4%
Faculty	82	47.7%	90	52.3%	172	37.6%
Secret/Clerical	4	4.1%	93	95.9%	97	21.2%
Tech/Paraprof	50	47.2%	56	52.8%	106	23.2%
Skilled Craft	2	100.0%	0	0.0%	2	0.4%
Maintenance	24	47.1%	27	52.9%	51	11.2%
TOTAL	176	38.5%	281	61.5%	457	100.0%

**UNIVERSITY STAFF BY JOB CATEGORY AND SEX
TOTAL**

JOB CATEGORY	MALE		FEMALE		TOTAL	
	NUMBER	PERCENT	NUMBER	PERCENT	NUMBER	PERCENT
Professional	103	57.9%	75	42.1%	178	11.1%
Exec/Adm/Mgr	45	72.6%	17	27.4%	62	3.9%
Faculty	418	68.3%	194	31.7%	612	38.0%
Secret/Clerical	7	2.3%	298	97.7%	305	19.0%
Tech/Paraprof	101	49.3%	104	50.7%	205	12.8%
Skilled Craft	35	97.2%	1	2.8%	36	2.2%
Maintenance	99	47.4%	110	52.6%	209	13.0%
TOTAL	808	50.3%	799	49.7%	1,607	100.0%



Source: Office of Human Resource Development

FACULTY/STAFF

DISTINGUISHED TEACHER AWARDS

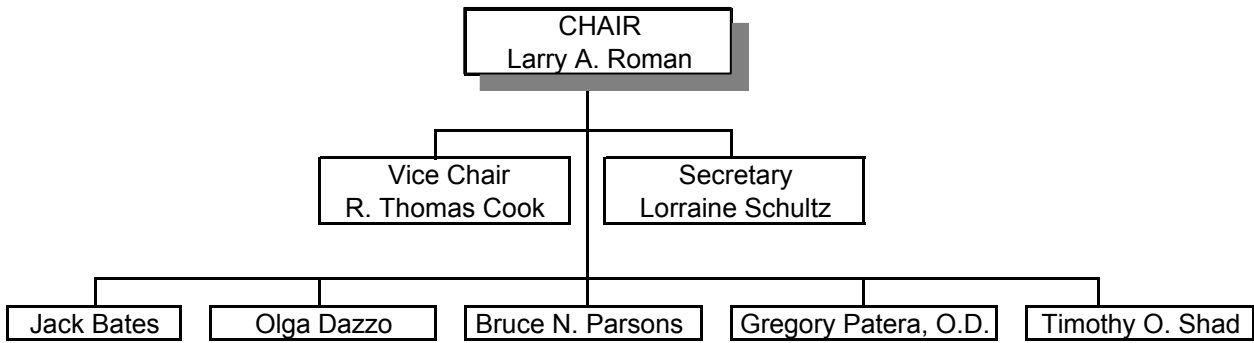
The Ferris State University Academic Senate oversees the selection of the Distinguished Teacher Awards. Teachers receiving this award have been nominated by their peers based on the following criteria: teaching excellence; participation in professional development activities; interest in students outside the classroom/laboratory; and exhibiting distinction as a member of the college community.

YEAR	RECIPIENT	COLLEGE	YEAR	RECIPIENT	COLLEGE
1963	Ralph E. Patullo	Arts & Sciences	1990	Dr. Marilyn Keigley	Business
1964	June B. Carr	Arts & Sciences	1990	Christine Towner	Allied Health
1965	Marguerite Jeserich	Arts & Sciences	1991	Dr. Roxanne M. Cullen	Arts & Sciences
1966	George Wells	Arts & Sciences	1991	Gary C. Horn	Arts & Sciences
1967	Garnet Zimmerman	Technology	1992	Bruce L. Beetley	Arts & Sciences
1968	Karlis Kazerovskis	Pharmacy	1992	John H. Landis	Allied Health Sciences
1969	Frank Karas	Arts & Sciences	1993	Doug Fonner	Arts & Sciences
1970	Robert K. Harry	Arts & Sciences	1993	Terry Nerbonne	Education
1971	Kenneth O. McManis	Arts & Sciences	1994	Fred Lovgren	Business
1972	George N. Holcomb	Pharmacy	1994	Edward Stuart	Technology
1973	Richard Hunter	Allied Health	1995	Maude Bigford	Arts & Sciences
1974	Roger F. Kennedy	Technology	1995	Judy Schottle	Allied Health Sciences
1975	Everett J. Nienhouse	Arts & Sciences	1996	Michael Keating	MI College of Opt. at F.S.U.
1976	Barbara Sengelaub	Allied Health	1996	Caroline Stern	Arts & Sciences
1977	Max T. Yeley	Technology	1997	Dr. J. Randall Vance	MI College of Opt. at F.S.U.
1978	Richard L. Shaw	Technology	1998	Dr. Walt Hoeksema	Arts & Sciences
1979	Joseph J. Mitala	Pharmacy	1998	Mitchell LeClaire	Technology
1980	Sidney P. Sytsma	Business	1999	Maryanne Heidemann	Arts & Sciences
1981	Richard A. Santer	Arts & Sciences	1999	James (Ted) Walker	Arts & Sciences
1982	Michael D. Eills	Allied Health			
1982	Neill H. Nutter	Arts & Sciences			
1983	Herbert L. Carson	Arts & Sciences			
1984	Robert E. Friar	Arts & Sciences			
1984	Newell H. Johnson	Technology			
1985	Julia H. Bonkowski	Allied Health			
1985	James P. Lehnert	Arts & Sciences			
1986	Ada Lou Carson	Arts & Sciences			
1987	Michael C. Cooper	Business			
1987	Rose Ann Swartz	Business			
1988	Robert C. Ferguson	Arts & Sciences			
1988	Garth S. McHattie	Education			
1989	Mark A. Curtis	Technology			
1989	James D. Maas	Business			

Organizational Charts

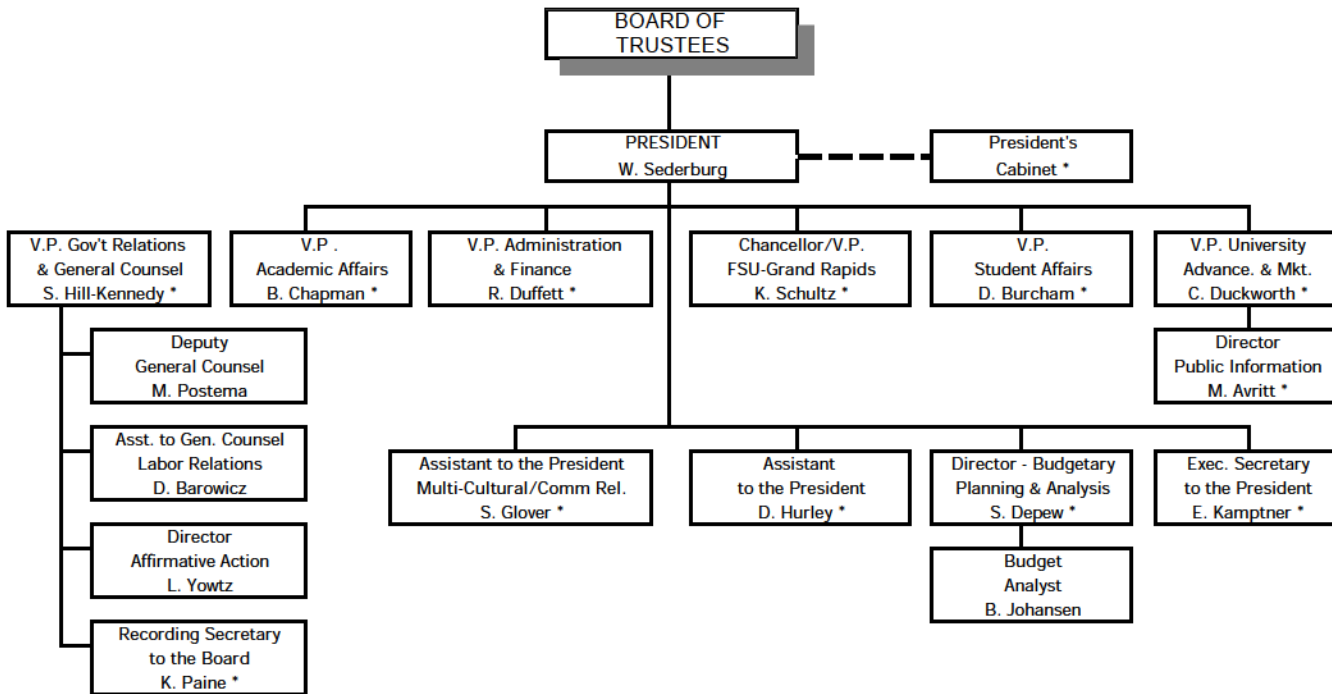
FERRIS STATE UNIVERSITY

BOARD OF TRUSTEES



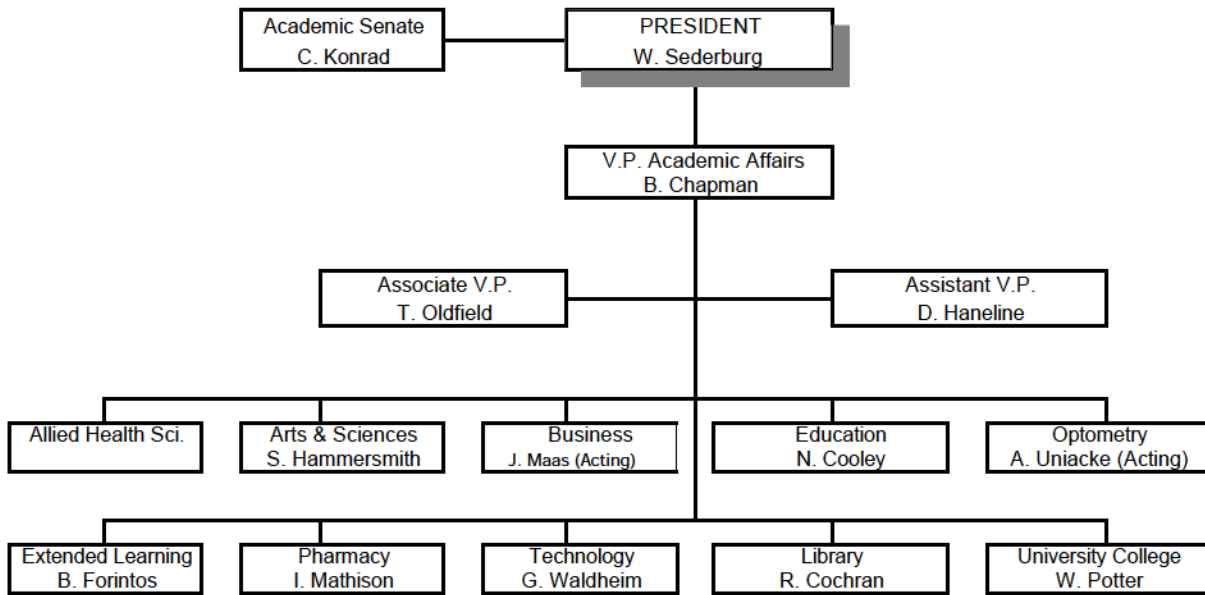
ORGANIZATIONAL CHARTS

FERRIS STATE UNIVERSITY BOARD OF TRUSTEES/EXECUTIVE DIVISION



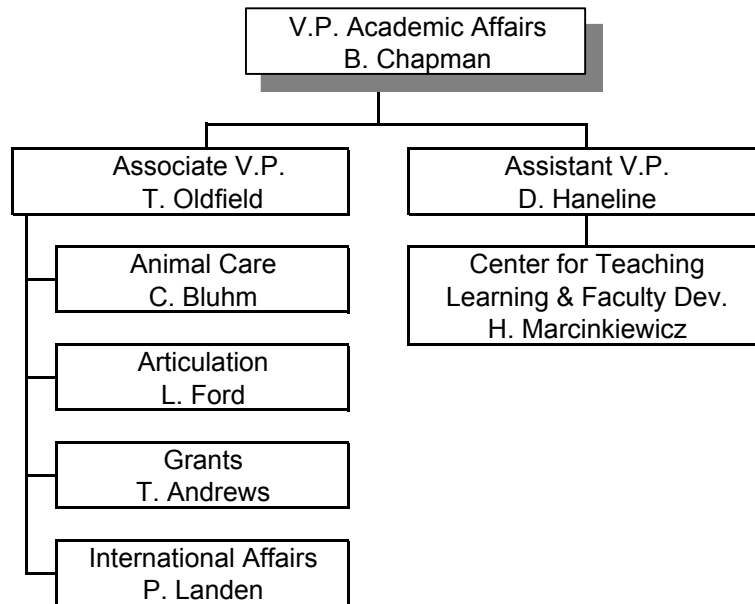
* Cabinet Members

FERRIS STATE UNIVERSITY
ACADEMIC AFFAIRS DIVISION



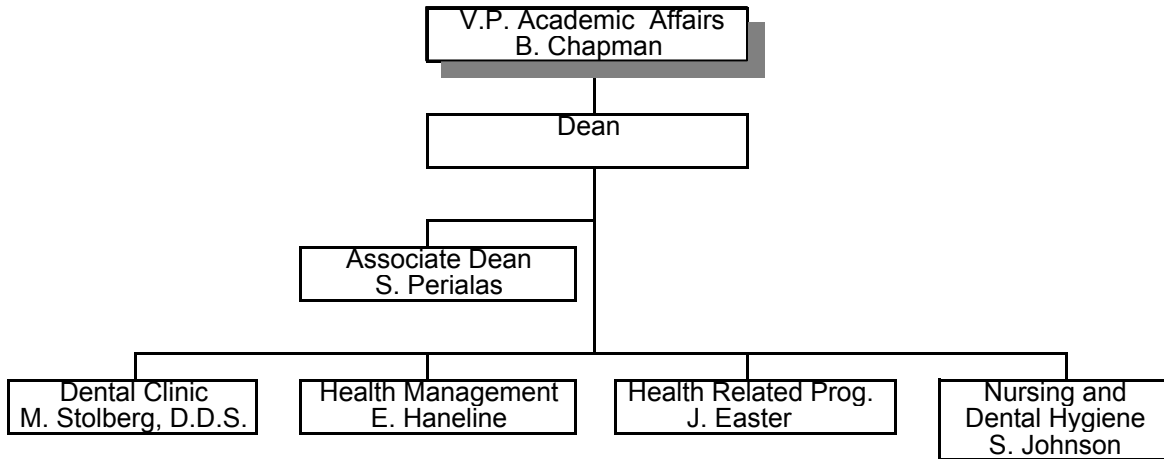
ORGANIZATIONAL CHARTS

FERRIS STATE UNIVERSITY OFFICE OF ACADEMIC AFFAIRS



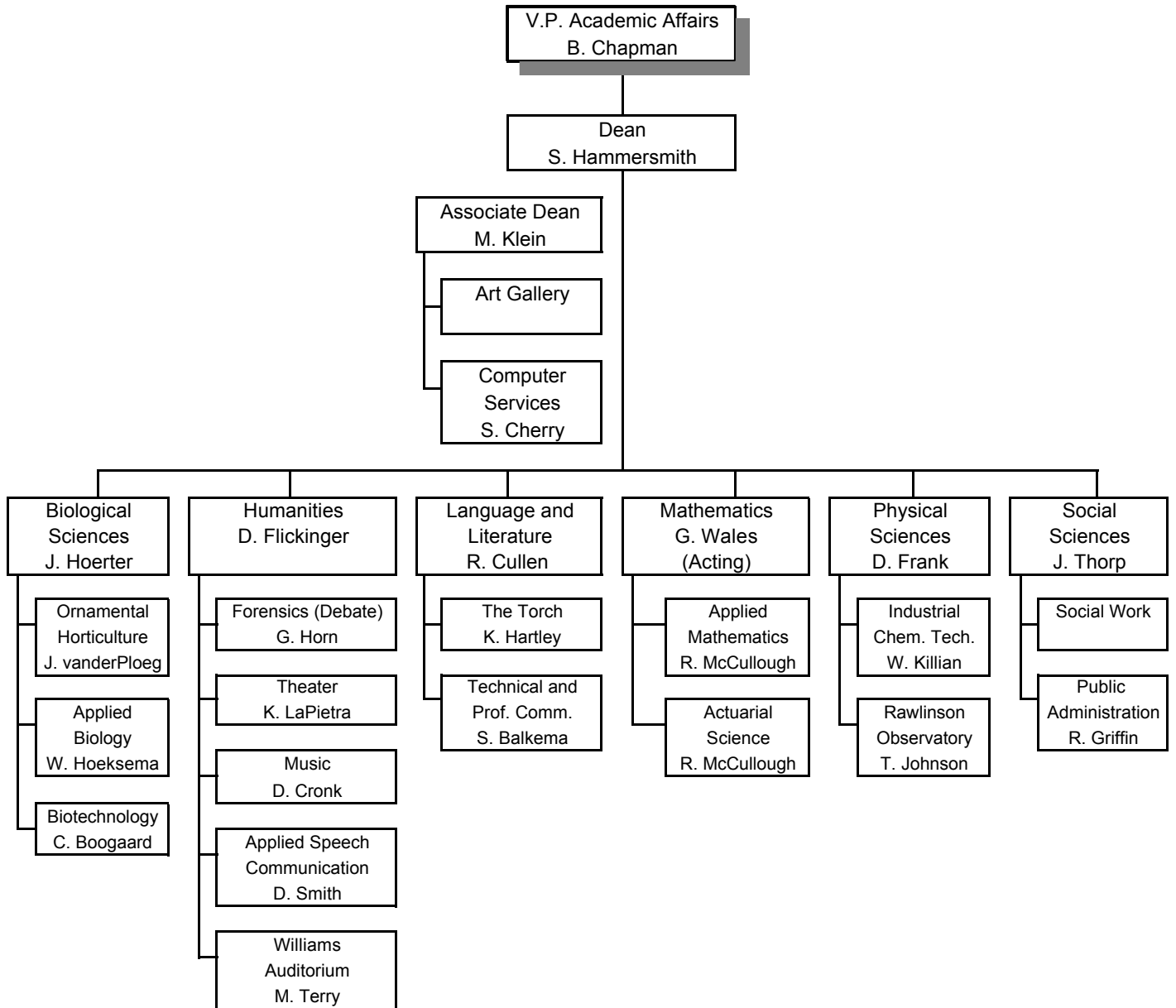
ORGANIZATIONAL CHARTS

FERRIS STATE UNIVERSITY
ACADEMIC AFFAIRS DIVISION
COLLEGE OF ALLIED HEALTH SCIENCES



ORGANIZATIONAL CHARTS

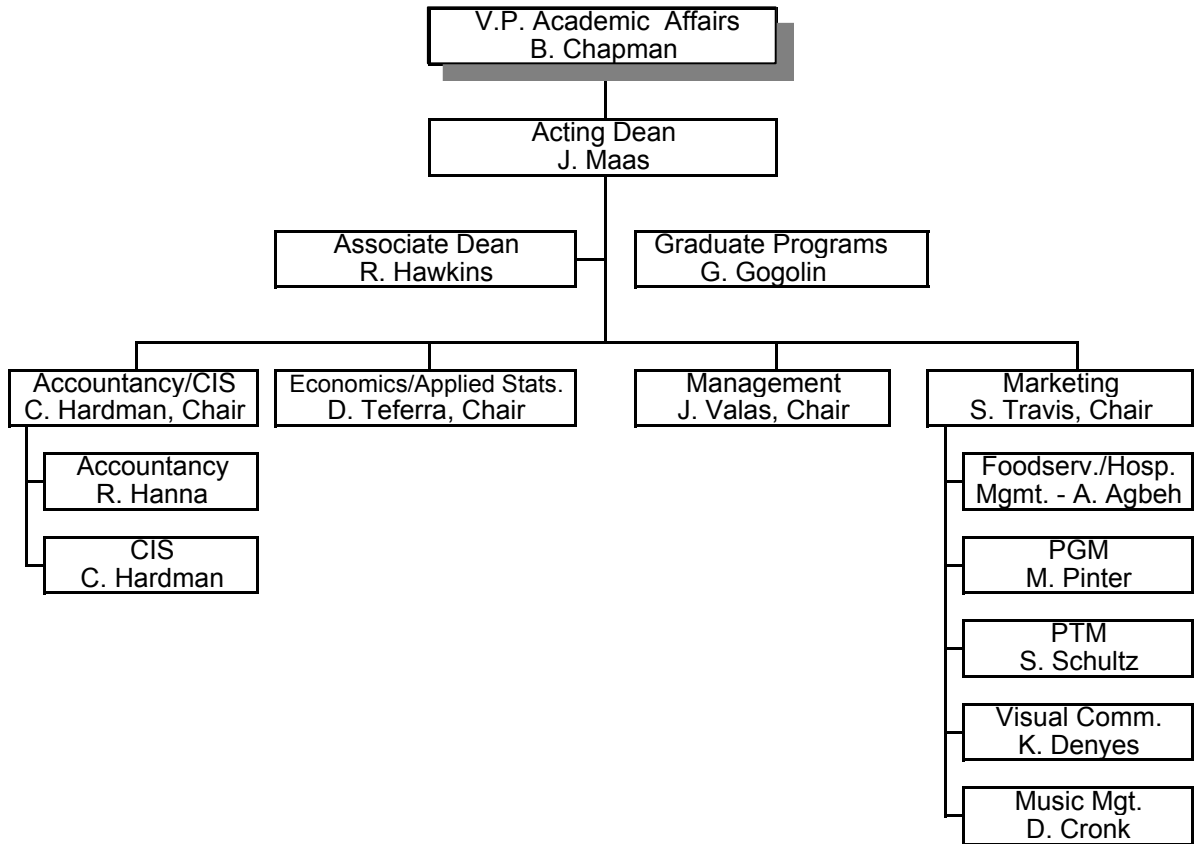
FERRIS STATE UNIVERSITY ACADEMIC AFFAIRS DIVISION COLLEGE OF ARTS & SCIENCES



ORGANIZATIONAL CHARTS

FERRIS STATE UNIVERSITY ACADEMIC AFFAIRS DIVISION

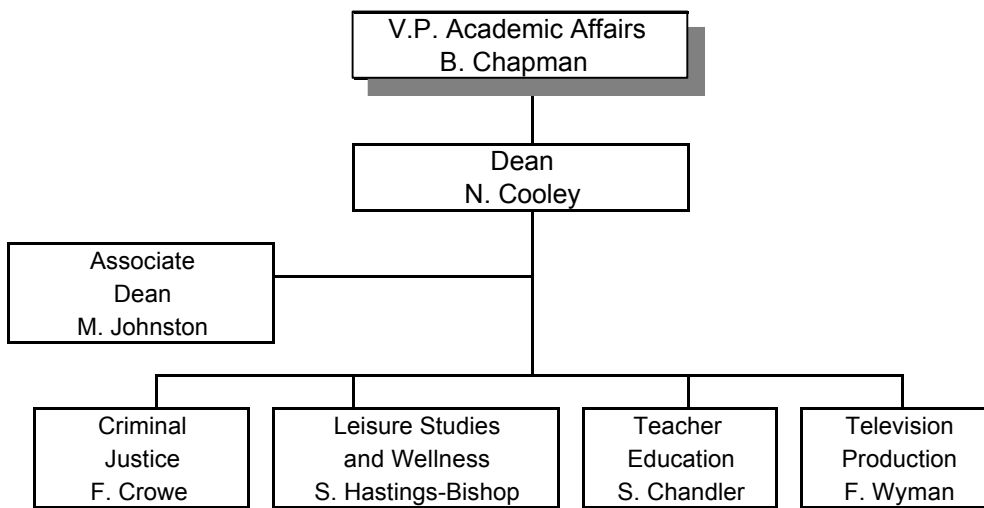
COLLEGE OF BUSINESS



ORGANIZATIONAL CHARTS

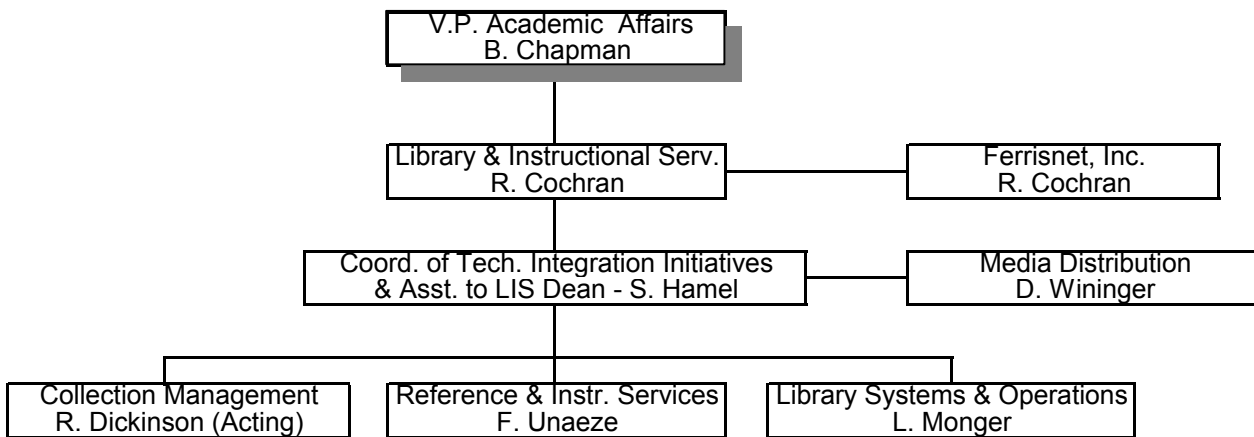
FERRIS STATE UNIVERSITY ACADEMIC AFFAIRS DIVISION

COLLEGE OF EDUCATION



FERRIS STATE UNIVERSITY
ACADEMIC AFFAIRS DIVISION

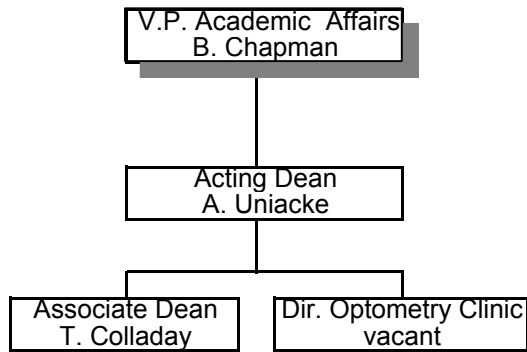
LIBRARY & INSTRUCTIONAL SERVICES



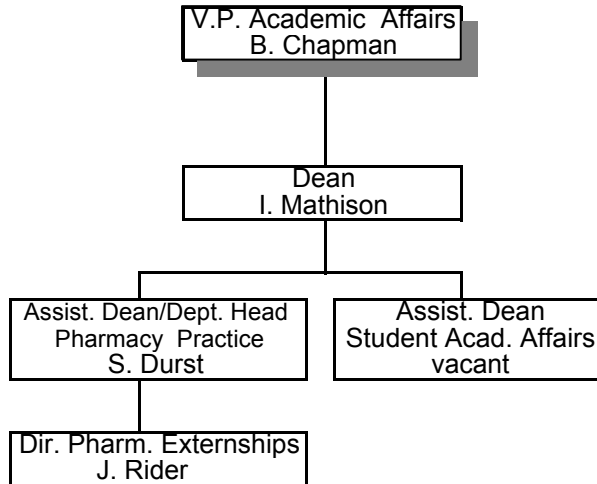
ORGANIZATIONAL CHARTS

FERRIS STATE UNIVERSITY ACADEMIC AFFAIRS DIVISION

MICHIGAN COLLEGE OF OPTOMETRY AT F.S.U.

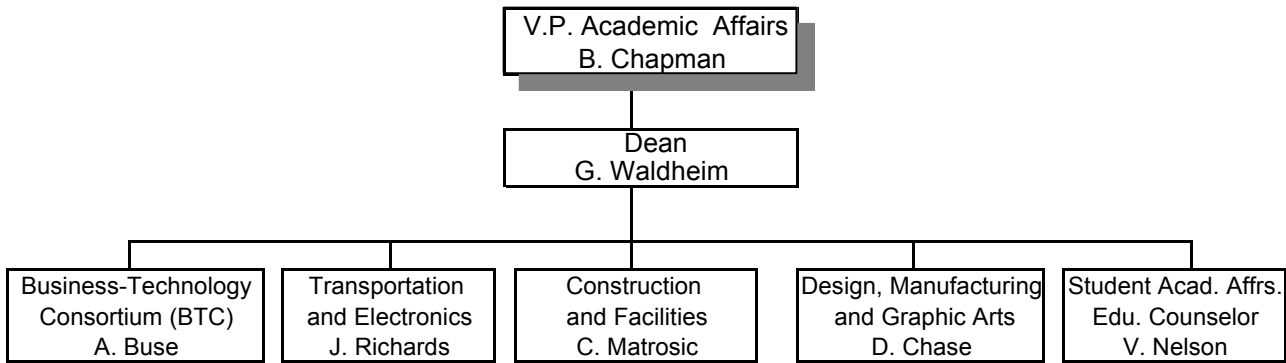


FERRIS STATE UNIVERSITY
ACADEMIC AFFAIRS DIVISION
COLLEGE OF PHARMACY



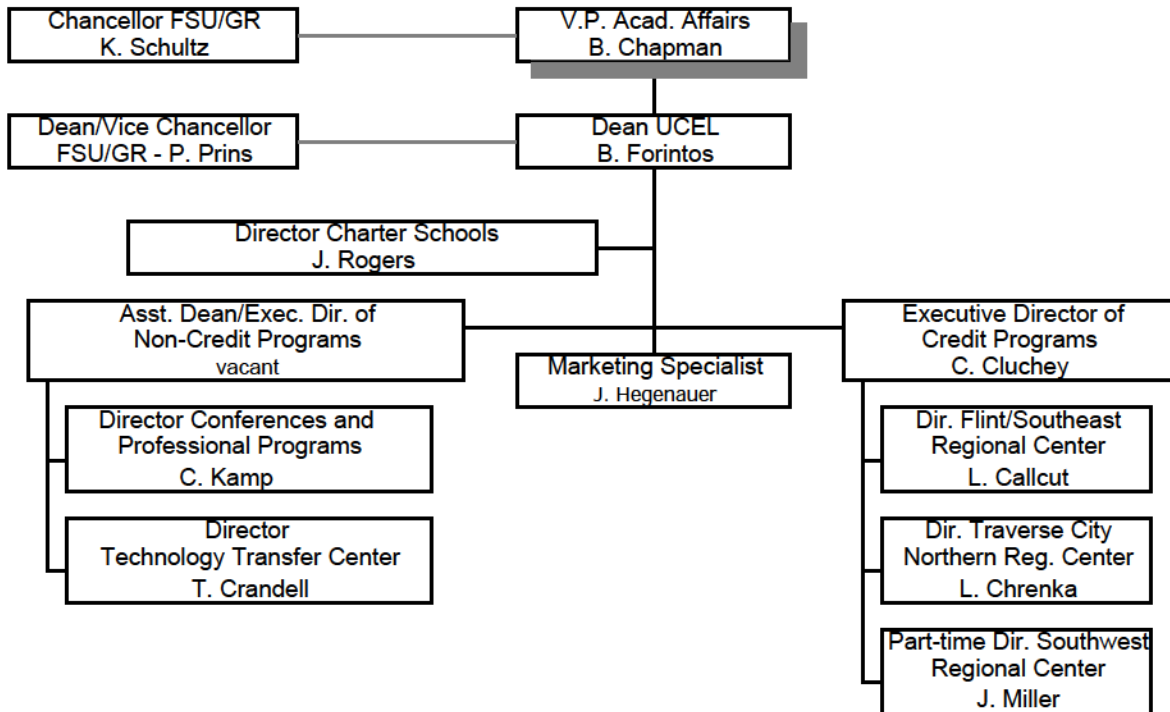
ORGANIZATIONAL CHARTS

FERRIS STATE UNIVERSITY ACADEMIC AFFAIRS DIVISION COLLEGE OF TECHNOLOGY



FERRIS STATE UNIVERSITY
ACADEMIC AFFAIRS DIVISION

UNIVERSITY CENTER FOR EXTENDED LEARNING

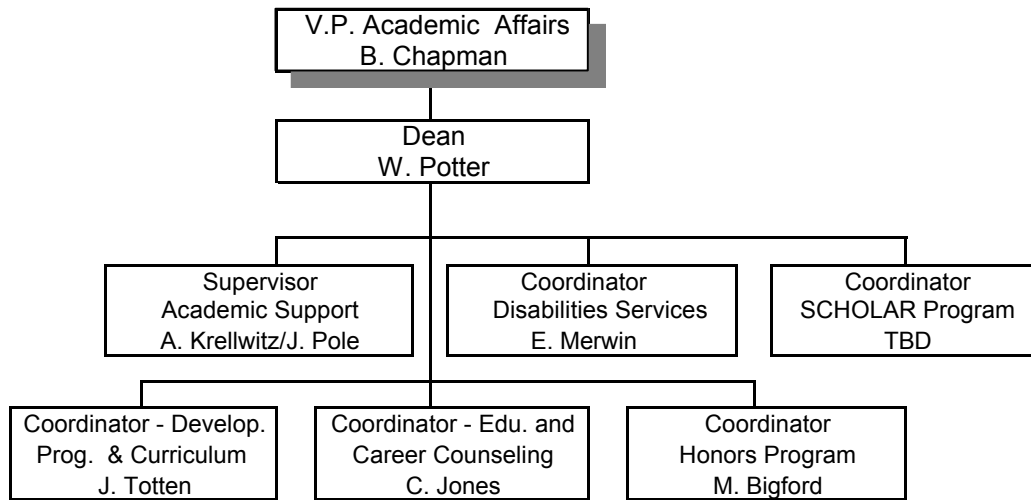


ORGANIZATIONAL CHARTS

FERRIS STATE UNIVERSITY

ACADEMIC AFFAIRS DIVISION

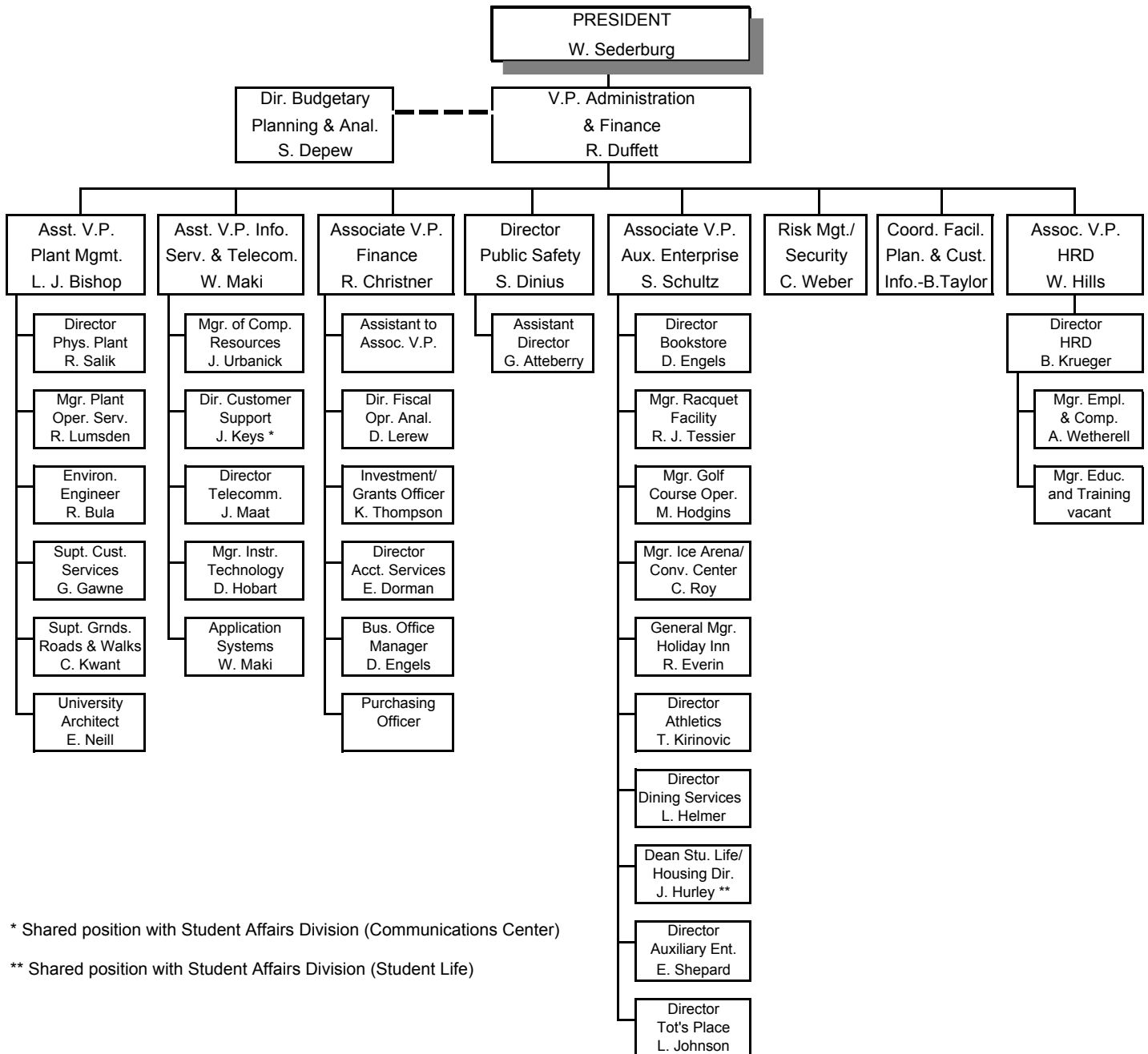
UNIVERSITY COLLEGE



ORGANIZATIONAL CHARTS

FERRIS STATE UNIVERSITY

OFFICE OF VICE PRESIDENT FOR ADMINISTRATION AND FINANCE DIVISION

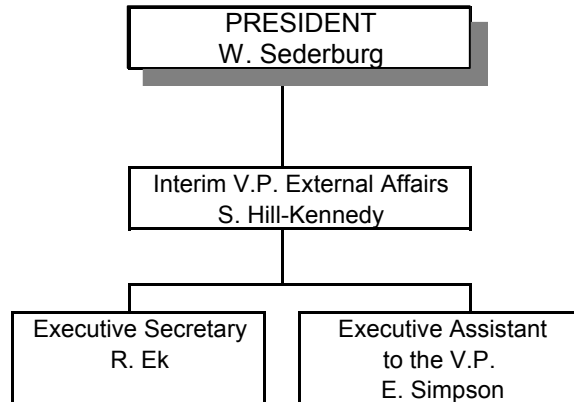


* Shared position with Student Affairs Division (Communications Center)

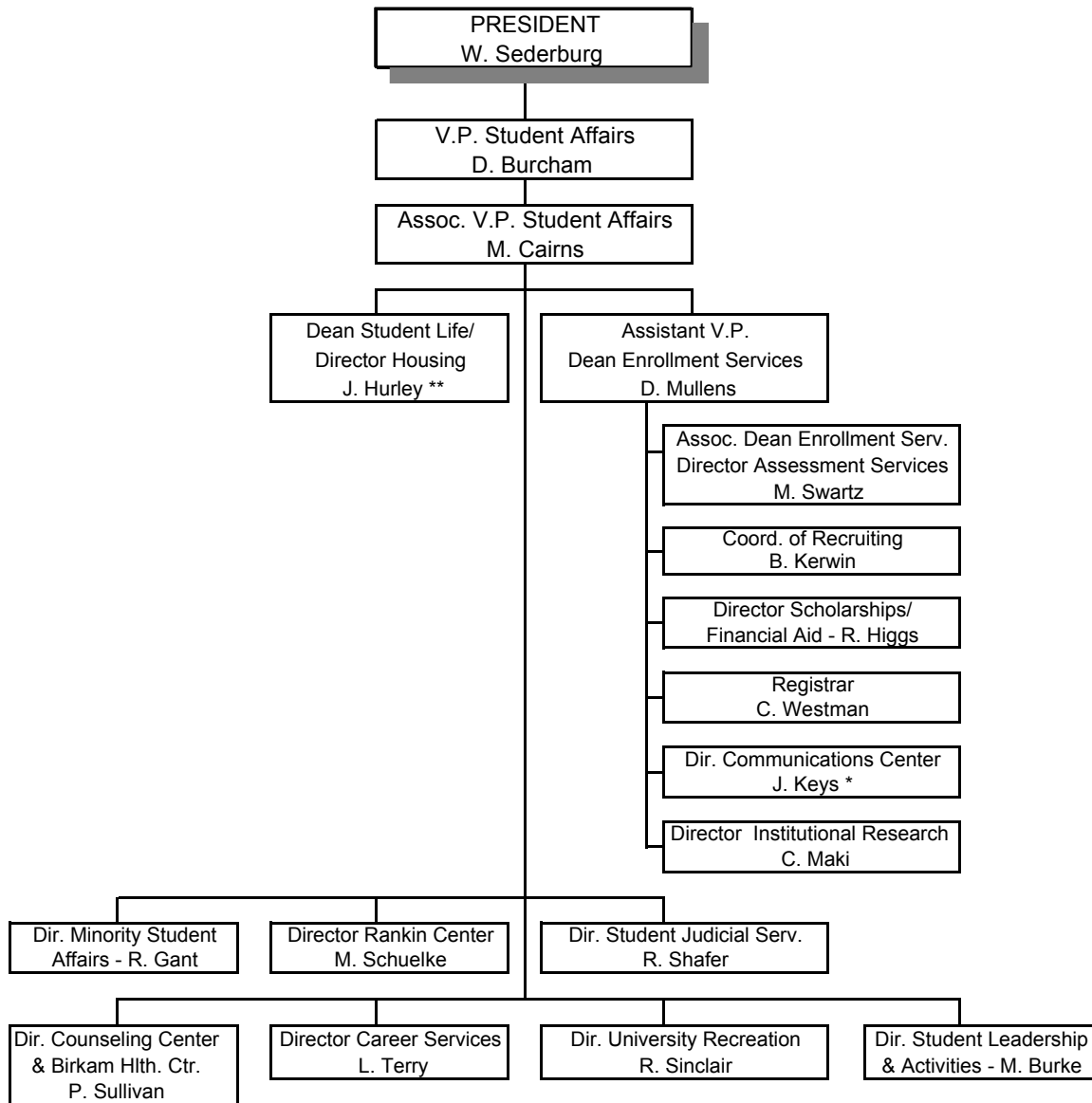
** Shared position with Student Affairs Division (Student Life)

ORGANIZATIONAL CHARTS

FERRIS STATE UNIVERSITY EXTERNAL AFFAIRS DIVISION



FERRIS STATE UNIVERSITY
STUDENT AFFAIRS DIVISION

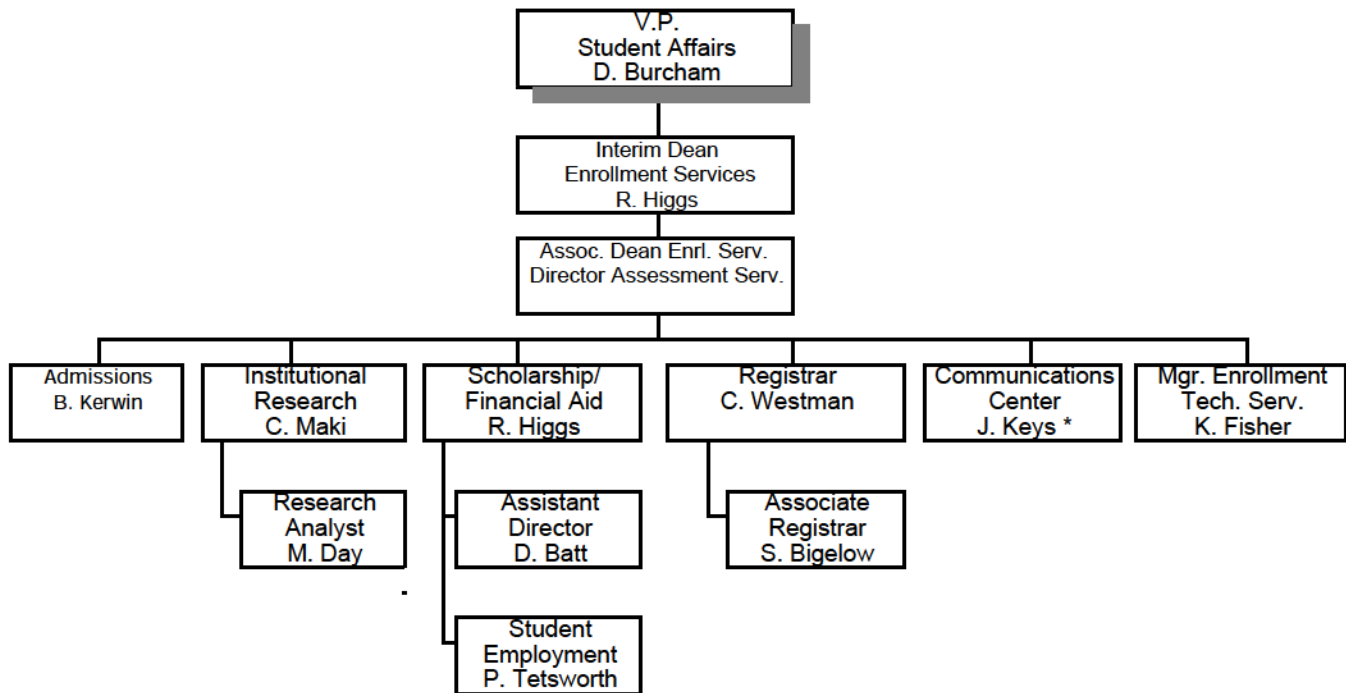


* Shared position with Administration & Finance Division (IS&T)

** Shared position with Administration & Finance Division (Housing)

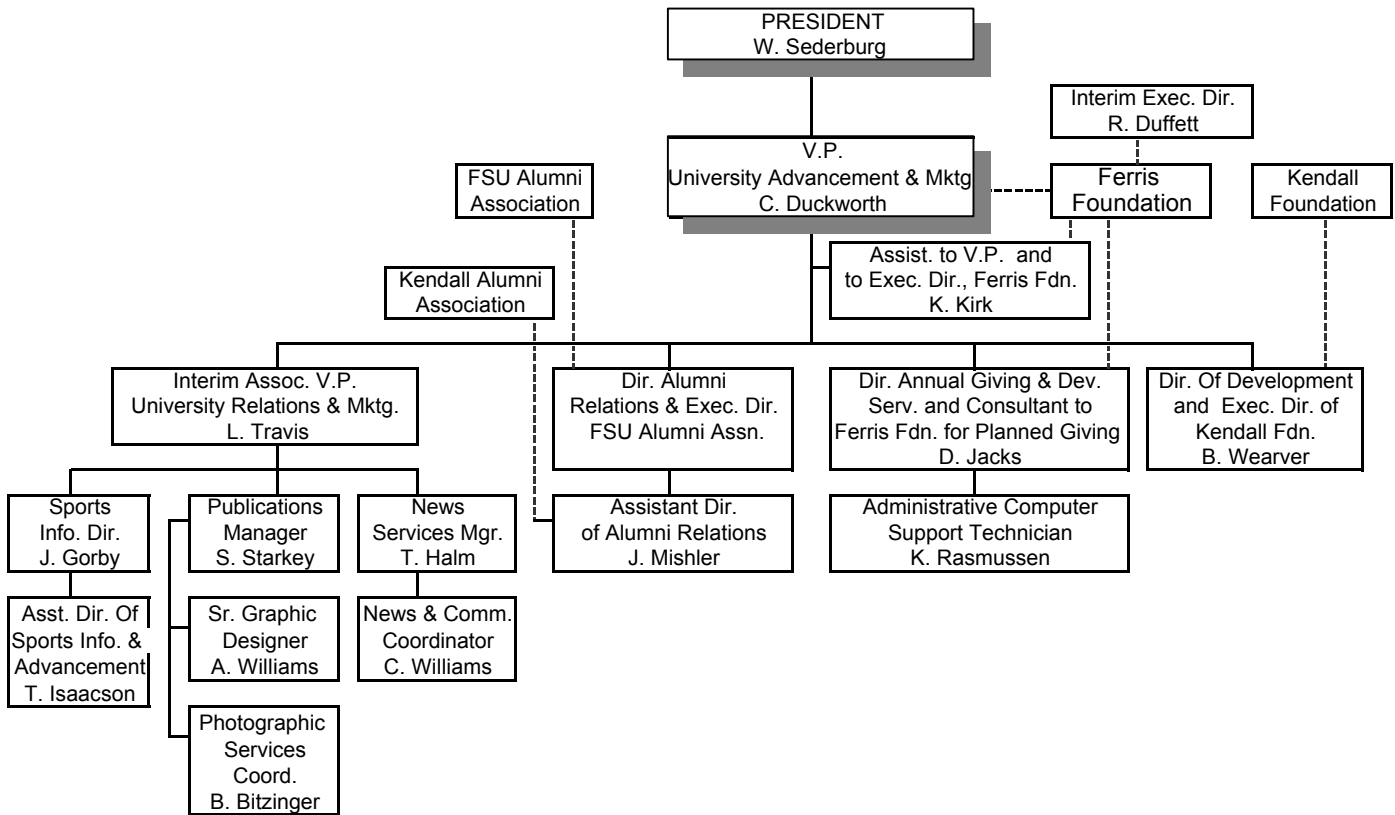
ORGANIZATIONAL CHARTS

FERRIS STATE UNIVERSITY STUDENT AFFAIRS DIVISION ENROLLMENT SERVICES



* Shared position with Administration & Finance Division (IS&T)

FERRIS STATE UNIVERSITY
UNIVERSITY ADVANCEMENT AND MARKETING DIVISION



Alumni

ALUMNI

ALUMNI BY COLLEGE

1998

	<u>Active Alumni</u>	<u>Total Alumni</u>
Allied Health Sciences	9,092	12,236
Arts & Sciences	7,438	15,347
Business	24,533	37,161
Education	7,102	9,307
Optometry	1,790	2,239
Pharmacy	4,718	7,369
Technology	17,821	24,910
Total	72,494	108,569

Total Alumni Donations - Fiscal Year 1998 \$3,588,867

Numbers may be duplicated if a degree was earned from more than one college.

Data for 1999 was not available at time of printing

Source: University Advancement

PLACEMENT RATES

<u>Categories</u>	<u>1997-98</u>	<u>1996-97</u>	<u>1995-96</u>	<u>1994-95</u>
Placement rate includes grads who are continuing their education or are employed.	98%	97%	97%	93%
Individuals in job market who found jobs.	99%	98%	98%	92%
Grads in job market employed in their field.	91%	88%	89%	89%
Response rate of grads completing follow-up survey.	51.5%	61%	52%	77%

Associate Degree students continuing their education	69%	68%	69%	61%
--	-----	-----	-----	-----

In 1997-98 66.5% continued at Ferris
 In 1997-98 2.1% transferred to another institution

Respondents who are working and continuing their education concurrently are reported in both of these categories. The placement rate includes individuals only once.

Source: Career Services

ALUMNI

Beginning Annual Full-Time Salaries for Associate Degree Graduates For The Year 1997-98

COLLEGE/CURRICULUM	NUMBER REPORTING	AVERAGE SALARY	MEDIAN SALARY RANGE	LOW	HIGH
<u>ALLIED HEALTH SCIENCES</u>					
Dental Hygiene	17	\$34,676	\$32,000 - 35,000	\$20,000	55,000
Health Information Tech	6	19,333	16,000 - 19,000	10,000	35,000
Nuclear Medicine Tech	6	29,500	29,500 - 33,500	16,000	39,000
Nursing, Tech	10	27,500	21,500 - 25,500	13,000	43,000
Radiography	10	22,350	21,500 - 25,500	10,000	35,000
<u>ARTS & SCIENCES</u>					
	N/A	N/A	N/A	N/A	N/A
<u>BUSINESS</u>					
	N/A	N/A	N/A	N/A	N/A
<u>EDUCATION</u>					
Child Development	9	20,611	20,000 - 23,000	13,000	35,000
<u>OPTOMETRY</u>					
Opticianry	5	22,300	20,000 - 23,000	13,000	31,000
<u>TECHNOLOGY</u>					
Heavy Equipment Tech	8	23,688	24,000 - 27,000	10,000	31,000
Manufacturing Tooling Tec	12	28,417	32,000 - 35,000	10,000	39,000

Salary ranges not calculated for programs with less than four salaries reported.

Source: Career Services

**Beginning Annual Full-Time Salaries for
Doctorate, Master, and Bachelor Degree Graduates
For the Year 1997-98**

COLLEGE/CURRICULUM	NUMBER REPORTING	AVERAGE SALARY	MEDIAN SALARY RANGE	RANGE	
				LOW	HIGH
<u>ALLIED HEALTH SCIENCES</u>					
<u>Bachelors</u>					
Health Care Systems Admin	11	\$28,909	\$24,000 - 27,000	\$10,000	47,000
Health Information Mgt	6	24,833	24,000 - 27,000	16,000	31,000
Indust & Environ Health Mgt	12	34,500	29,500 - 33,500	24,000	55,000
Medical Technology	10	28,300	29,500 - 33,500	13,000	35,000
Nursing, Professional	16	39,000	40,000 - 43,000	13,000	55,000
<u>ARTS & SCIENCES</u>					
<u>Bachelors</u>					
Social Work	16	23,250	20,000 - 23,000	13,000	47,000
<u>BUSINESS</u>					
<u>Masters</u>					
Information Systems Mgt	10	46,050	52,000 - 55,000	10,000	55,000
<u>Bachelors</u>					
Accountancy	12	26,833	25,500 - 29,500	20,000	35,000
Advertising	5	24,700	24,000 - 27,000	20,000	27,000
Business Administration	20	29,500	25,500 - 29,500	13,000	55,000
Computer Info Systems	14	38,071	35,500 - 37,500	28,000	55,000
Hospitality Management	4	25,500	17,500 - 33,500	13,000	39,000
Marketing	7	28,929	28,000 - 31,000	24,000	35,000
Marketing/Pro Golf Mgt	11	23,318	24,000 - 27,000	13,000	31,000
Marketing/Pro Tennis Mgt	6	34,833	36,000 - 39,000	16,000	43,000
Visual Communication	5	25,500	24,000 - 27,000	20,000	31,000
<u>EDUCATION</u>					
<u>Masters</u>					
Career & Technical Educatior	12	41,167	33,500 - 45,500	24,000	55,000
<u>Bachelors</u>					
Business Education	4	30,500	28,000 - 31,000	28,000	35,000
Criminal Justice	21	28,167	28,000 - 31,000	16,000	39,000
Technical Education	5	29,500	28,000 - 31,000	24,000	35,000
<u>OPTOMETRY</u>					
<u>Doctorate</u>					
O.D.	17	49,500	55,000 - 60,000	20,000	55,000
<u>PHARMACY</u>					
<u>PharmD</u>					
Pharmacy	4	35,500	28,000 - 31,000	28,000	55,000
<u>Bachelors</u>					
Pharmacy	42	53,214	55,000 - 60,000	20,000	55,000
<u>TECHNOLOGY</u>					
<u>Bachelors</u>					
Auto & Heavy Equip Mgt	27	34,833	32,000 - 35,000	24,000	47,000
Construction Mgt	15	34,033	32,000 - 35,000	28,000	43,000
Elec/Electronics Engr Tech	7	36,357	36,000 - 39,000	28,000	51,000
Facilities Management	6	30,833	28,000 - 31,000	24,000	39,000
HVACR Engr Tech	18	37,056	36,000 - 39,000	20,000	43,000
Manufacturing Engr Tech	9	42,833	40,000 - 43,000	28,000	55,000
Plastics Engr Tech	22	41,682	40,000 - 43,000	32,000	55,000
Printing Management	7	28,357	28,000 - 31,000	24,000	31,000
Product Design Engr Tech	9	40,167	40,000 - 43,000	28,000	51,000
Surveying Engineering	14	34,071	32,000 - 35,000	28,000	47,000
Welding Engineering Tech	17	44,559	44,000 - 47,000	40,000	55,000

Salary ranges not calculated for programs with less than four salaries reported.

Source: Career Services

ALUMNI

RECIPIENTS OF ALUMNI AWARDS

Since 1956, Commencement week activities have included the presentation by the Ferris State University Alumni Association of Distinguished Alumni Awards recognizing exceptional career success and noteworthy fidelity and devotion to the University. Recipients are:

1956 Frederick L. Caldena Ralph Pino Nate S. Shapero	1964 Bess Rose Fishman Lewie H. Hull J. Arthur Pino	1973 Bert C. Brennan Albert B. Doherty, III John W. Spicer Fred A. Westerman	1982 Howard L. Dell Jack M. Newcomb Rena D. Westra	1990 Philip E. Hoffman Dennis B. Lerner Roger G. Stoll Clinton L. Swinehart
1957 Walter R. Braund Jean DeBoer Edward M. Sharpe	1965 Leo F. Duggan C. Gordon Phillips George C. Quinnell	1974 Frank Curtis Phillip Runkel Colin Smith	1983 Douglas W. Call Darnell E. Cole Margaret Ethel Denise Elton "Ott" Gingrich	1991 Darroll Z. Howard Jane Reagan Jones Kenneth E. McCourt
1958 C. V. Burnett John H. Butts Ray M. Hardy Maurice C. LaClaire Charles W. Martin Fred B. Post W. C. Taggart Robert H. Wisner	1966 L. Dale Faunce Carlton H. Runcieman	1975 Rex O. Graff Fred Schnarr Chester I. Williams	1984 Richard C. Andresen Edmund D. Farhat Kenneth J. Hicks	1992 Paul E. Boyer Richard E. Hurst Carolyn C. Kilpatrick James Middaugh
1959 Howard C. Grimes James T. Jones Willard J. Nash Arthur R. Sherk	1967 Albert F. Cleveland Roy A. Darling James C. Finney, Sr. Willard J. Nash	1976 S. John Byington Gerald L. DeHaan Clare G. Johnson H. James Renaud	1985 Jean D. Deupree Arnold L. Johnson Bruce N. Parsons	1993 Eugene A. DeFouw Douglas P. Johnson Barbara L. Ottinger Louis M. Sesti
1960 Manley M. Ellis Thomas F. Heatley Thaddeus B. Taylor	1968 Norman E. Borgerson Ann W. Sawasky Reuben E. Trippensee	1977 James R. Hess Florence I. Holden Robert J. Norsworthy	1986 Richard L. Antonini Bertil G. Carlson Kenneth L. Cook Jack D. Lewis	1994 Joseph C. Barney, Jr Vernita Burrows R. Thomas Cook Kenneth Hoexum Robert N. Tenney
1961 C. V. Buttleman Merta L. Reed Gideon E. Smith	1969 Carroll Boutell Elmon Cataline	1978 Ruth Gibson Butler Leonard W. Gopp Robert C. Redman	1987 Maurice Q. Bectel Roger W. Anderson H. Kearney Walters	1995 William Adrian Jack Bates John Bradac Lawrence Marfechuk Ronald Snead
1962 Walter Armbruster Joseph C. Hirschfield Hattie Smith Lear Baribeau	1970 Charles E. Fairman Ethel Taylor Pierce John Stahlin	1979 Peggy A. Frazier Thomas P. Scholler Lee A. Westberg	1988 Marjorie L. Fleming George H. Ryan, Sr. Gordon E. Kamstra Charles E. Lippert	1996 David V. Dellar
1963 Clare F. Jarecki Charles S. Neithercut John W. Tenny	1971 Stanley J. Byington Gerald McKessy Raymond Sines	1980 E. Elaine Davies Kuno Hammerberg John F. Mangrum	1989 Albert J. Coudron Kenneth W. Kirk George J. Menoutes Jerry R. Tubbs	1997 John Wheeler
	1972 Clarence Freeman Delbert Long Ramsay Wardrop	1981 Alvin L. Burrige Floyd E. Curtis Avis J. Ericson		1998 Steve Harvey
				1999 Jerry Woodcock

The Pacesetter Award recognizes alumni who have been in the job field up to 13 years with exceptional success. Recipients are:

1998 Debra Schults Jacquelyn Keehne-Miron	1999 Brenda Bartz Lisa Dexter
--	--

Source: Alumni Relations

Budget

**BUDGETARY PLANNING AND ANALYSIS
SUMMARY OF 1999-00 TUITION/FEEES AND ROOM/BOARD
MICHIGAN PUBLIC UNIVERSITIES**

	<u>FY-00</u> <u>TUITION</u>	<u>TUITION</u> <u>RANK</u>	<u>FY-00</u> <u>RM/BRD</u>	<u>ROOM/</u> <u>BOARD</u> <u>RANK</u>	<u>FY-00</u> <u>TOTAL</u> <u>COST</u>	<u>TOTAL</u> <u>COST</u> <u>RANK</u>
University of Michigan	6,673	1	5,614	1	12,287	1
Michigan State	5,295	2	4,298	11	9,593	2
Michigan Tech	4,595	3	4,726	7	9,321	3
Ferris State	4,118	9	5,110	2	9,228	4
Grand Valley	4,124	8	4,910	3	9,034	5
Western Michigan	4,147	6	4,831	6	8,978	6
Lake Superior	4,034	11	4,930	4	8,964	7
Oakland	4,167	5	4,715	8	8,882	8
Eastern Michigan	3,737	10	4,842	5	8,579	9
Saginaw Valley	3,512	14	4,800	7	8,312	10
Central Michigan	3,630	13	4,620	9	8,250	11
Northern Michigan	3,146	15	4,640	10	7,786	12
Wayne State	4,127	7				
UM - Flint	3,830	12				
UM - Dearborn	4,361	4				
UNWEIGHTED AVERAGE	4,233		4,836		9,101	

Sources: Presidents Council, State Universities of Michigan
November 30, 1999

BUDGET

FERRIS STATE UNIVERSITY FY 1999-00 GENERAL FUND OPERATING BUDGET (AMOUNTS IN THOUSANDS)

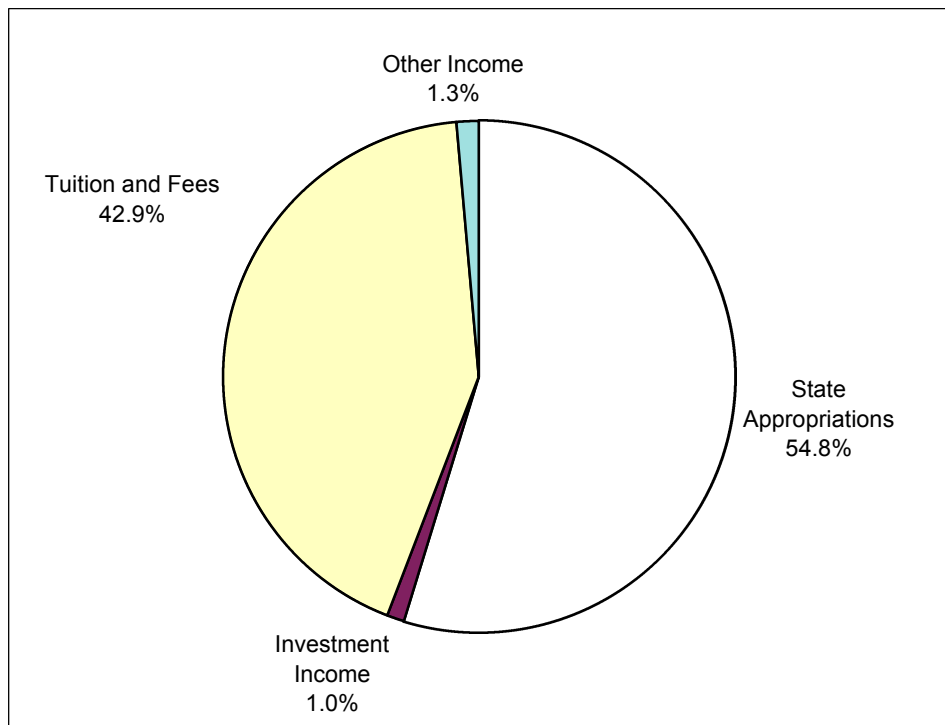
<u>REVENUES</u>	<u>FY 1999-00 OPERATING BUDGET</u>
STATE APPROPRIATIONS	\$53,110 *
TUITION/FEES	41,617
INVESTMENT INCOME	1,000
OTHER INCOME	<u>1,228</u>
TOTAL REVENUES	\$96,955
<u>EXPENDITURES</u>	
SALARY/WAGE/BENEFIT	\$73,164
SUPPLY/EXPENSE/TRANSFER	18,835
DEFERRED MAINTENANCE	700
UTILITIES	2,384
STUDENT ASSISTANCE	3,769
EQUIPMENT	<u>1,169</u>
TOTAL EXPENDITURES	\$100,021
REVENUE/EXPENDITURE NET	-3,066
PRIOR YEAR CARRYOVER BALANCE	<u>3,066</u>
BALANCE WITH CARRYOVER	\$0

* includes a one-time \$1,000,000 supplemental state appropriation

Source: Budget Office, General Fund Operating Budget FY 99/00

**FERRIS STATE UNIVERSITY
REVENUE SUMMARY
(AMOUNTS IN THOUSANDS)**

	<u>AMOUNT</u>	<u>PERCENT</u>
STATE APPROPRIATIONS	\$53,110	54.8%
INVESTMENT INCOME	1,000	1.0%
TUITION AND FEES	41,617	42.9%
OTHER INCOME	1,228	1.3%
TOTAL	\$96,955	

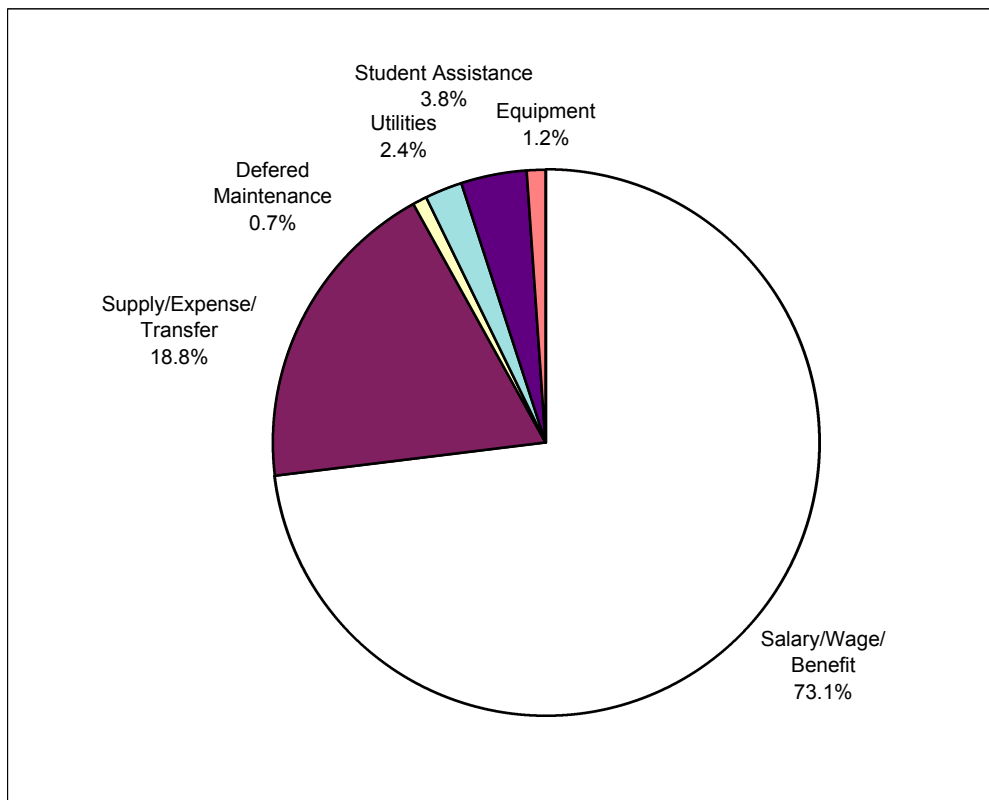


Source: Budget Office, General Fund Operating Budget FY-99/00

BUDGET

FERRIS STATE UNIVERSITY EXPENDITURE SUMMARY (AMOUNTS IN THOUSANDS)

	AMOUNT	PERCENT
SALARY/WAGE/BENEFIT	\$73,164	73.1%
SUPPLY/EXPENSE/TRANSFER	18,835	18.8%
DEFERRED MAINTENANCE	700	0.7%
UTILITIES	2,384	2.4%
STUDENT ASSISTANCE	3,769	3.8%
EQUIPMENT	1,169	1.2%
TOTAL	\$100,021	



Source: Budget Office, General Fund Operating Budget FY-99/00

Facilities

**SUMMARY OF ALL CAMPUS FACILITIES OWNED OR RENTED
BY FERRIS STATE UNIVERSITY**

BUILDING	SQUARE FEET	CUBIC FEET	CONSTRUCTED OR IMPROVED
NON-GENERAL FUNDED FACILITIES			
BOND HALL	90,500	820,400	1966
BROPHY HALL	47,000	482,750	1962
CARLISLE HALL	47,200	423,000	1957
CLARK HALL	41,500	360,900	1960
CONFERENCE CENTER	25,238	380,000	1990
COPY CENTER	4,064	39,872	1969
COUNTY STORAGE (RENTED)	20,000	240,000	1989
CRAMER HALL	91,700	824,700	1969
EAST CAMPUS APARTMENTS	72,600	636,200	1955
HALLISY HALL	44,700	406,000	1958
HEALTH CENTER (50%)	9,200	91,250	1959-67
HELEN FERRIS HALL	44,300	383,000	1956
HENDERSON HALL	44,900	405,500	1965
HOLIDAY INN HOTEL COMPLEX	72,789	582,000	1990
ICE ARENA	69,460	980,570	1974-99
KATKE GOLF CART STORAGE	2,800	27,600	1984
KATKE GOLF CLUB HOUSE	2,400	38,400	1974
KATKE GOLF MAINTENANCE BLDG	3,200	44,800	1974
KNOLLCREST COMMONS	11,094	292,860	1961
MASSELINK COMPLEX	104,700	942,300	1955-58
MCNERNEY HALL	47,000	482,750	1962
MERRILL HALL	51,700	515,050	1961
M.R.P.C.	16,836	192,612	1985-87
MILLER HALL	47,382	444,245	1963
PICKELL HALL	50,400	468,600	1964
PUTERBAUGH HALL	46,400	436,400	1965
RACQUET BALL FACILITY	38,800	994,000	1980-87
RANKIN CENTER	109,100	1,385,900	1958-87
SOUTH CAMPUS APARTMENTS	53,200	466,400	1958
SOUTH COMMONS	32,460	400,217	1963-64-94
SOUTHWEST COMMONS	19,500	253,600	1965-86
SOUTHWEST POWER PLANT	2,200	33,200	1964
TAGGART HALL	47,800	450,600	1964
TRAVIS HALL	51,700	515,050	1961
VANDERCOOK HALL	42,350	394,000	1957
WARD HALL	41,320	407,260	1963
WEST CAMPUS APARTMENTS	242,870	5,100,270	1995
WEST CAMPUS COMMUNITY BLDG	5,785	52,000	1996
TOTAL NON-GENERAL FUNDED	1,796,148	21,394,256	

FACILITIES

SUMMARY OF ALL CAMPUS FACILITIES OWNED OR RENTED BY FERRIS STATE UNIVERSITY

BUILDING	SQUARE FEET	CUBIC FEET	CONSTRUCTED OR IMPROVED
GENERAL FUNDED FACILITIES			
ALUMNI BUILDING	34,600	510,000	1929
ARTS & SCIENCE COMMONS	79,259	1,054,984	1996-99
AUTOMOTIVE CENTER	77,000	1,235,400	1956-88
BISHOP HALL	50,900	480,600	1968-87
BUSINESS BUILDING	90,600	700,000	1970
CARILLON TOWER	100	4,900	1968
CONSTRUCTION TECHNOLOGY	23,400	500,000	1962
CREATIVE ARTS	7,200	93,900	1965
DEPT OF PUBLIC SAFETY	5,168	41,144	1959-83
ELASTOMER/PLASTICS CENTER	43,392	510,555	1987-98
EWIGLEBEN SPORTS COMPLEX	76,600	1,280,806	1974-82-99
GENERAL SERVICES BLDG	27,143	490,330	1984-88
GROUNDS FACILITIES	9,032	98,856	1979
HEALTH CENTER (50%)	9,200	91,250	1959-67
HEAVY EQUIPMENT TECH	52,000	1,188,000	1987
INSTR RESOURCE CENTER	54,700	630,000	1969
JOHNSON HALL	33,600	328,600	1959
LIBRARY	57,000	723,900	1967
MCKESSY BARN	2,000	36,000	1989
MCKESSY HOUSE	2,800	23,000	1989-1997
MUSIC CENTER	10,000	137,900	1962
PENNOCK HALL	50,900	480,600	1968-77
PHARMACY BUILDING	62,200	1,214,300	1972
POWER PLANT	19,900	421,900	1955-88
PRAKKEN BUILDING	42,100	503,900	1952
SCIENCE BUILDING	107,300	1,680,000	1955-67-97
STARR BUILDING	86,400	1,607,200	1962-96
STUDENT RECREATION CENTER*	116,051	2,397,416	1962-99
SWAN BUILDING	131,600	1,685,400	1966-88
TOP TAGGART EAST	400	3,000	1965
TOP TAGGART WEST	800	6,000	1970
VFS ALLIED HEALTH BLDG	67,400	1,493,800	1979
WEST BUILDING	23,700	292,500	1952-85
WEST COMMONS	19,800	269,300	1968
TOTAL GENERAL FUNDED	1,474,245	22,215,441	
FSU'S GRAND TOTAL	3,270,393	43,609,697	

Note: * it is yet to be decided where to report the data for this facility

Source: University Architect