

---

# Fact Book

1992-93



*Old Main*

---

Ferris State University

December 1992

Dear Colleague:

The *Ferris State University Fact Book* is published for the students, faculty, staff, alumni, and friends of the University, who seek accurate information about our University. The project was conducted as a service to the university community by the Office of Institutional Studies. This second edition is a document that is designed to answer the most frequently asked questions about Ferris State University.

It is with pleasure that we share the information with you. As a result of your edits to the document last year, we have added student enrollment by program information in the document this year. We encourage you to review this work and solicit your suggestions for improvement of future issues.

Our appreciation is extended to the many offices that assisted us with the development of the information. Special thanks go to Sid Sytsma, who provided the computer hardware and software to desktop publish the book and to Maureen Brockdorf, who input the data, and designed and edited the page formats.

Carol L. Maki  
Director, Institutional Analysis

Mitzi A. Day  
Data Analyst

Ferris State University  
Office of Institutional Studies  
Big Rapids, MI 49307  
(616) 592-3801

EQUAL OPPORTUNITY/AFFIRMATIVE ACTION EMPLOYER

## TABLE OF CONTENTS

### GENERAL INFORMATION

Statement of Mission.....	1
Facts and Figures .....	2
Accreditation and Approval .....	3
Educational Grants and Scholarships .....	4
MAGB Awards to Faculty & Students.....	8

### STUDENTS/ENROLLMENT

Enrollment Listing of Resident Students by County .....	9
Enrollment Listing of Non-Resident Students by State .....	10
1992-93 Estimated Expenses (Tuition) .....	11
Total Headcount Enrollment, Fall 1965-1992.....	12
5-Year Headcount Enrollment Overview by College .....	13
Percent of Students by College.....	14
Comparative Enrollment Report by College .....	15
Enrollment by Age (Undergraduate Students) .....	16
Enrollment by Age (Graduate Students) .....	17
Enrollment by Age (First Professional Students) .....	18
Total Headcount Enrollment Compared to FTE .....	19
Student Credit Hour Production .....	20
Grade Distribution Report .....	21
Enrollment by Program (Allied Health Sciences) .....	22
Enrollment by Program (Arts & Sciences).....	24
Enrollment by Program (Business) .....	25
Enrollment by Program (Education) .....	27
Enrollment by Program (Optometry/Pharmacy) .....	28
Enrollment by Program (Technology) .....	29

### DEGREES

Degrees Conferred by Program (Allied Health Sciences) .....	31
Degrees Conferred by Program (Arts & Sciences) .....	32
Degrees Conferred by Program (Business) .....	34
Degrees Conferred by Program (Education).....	36
Degrees Conferred by Program (Optometry & Pharmacy) .....	37
Degrees Conferred by Program (Technology) .....	38
Summary of Degrees Conferred at FSU .....	40

### FACULTY/STAFF

Full-Time University Staff by Job Category & Sex .....	41
Part-Time University Staff by Job Category & Sex.....	42
Total University Staff by Job Category & Sex .....	43
Distinguished Teacher Awards .....	44

## TABLE OF CONTENTS

### ORGANIZATIONAL CHARTS

Board of Control .....	45
Board of Control/President .....	46
President .....	47
Office of Legal Affairs .....	48
Academic Affairs Division .....	49
Office of Academic Affairs .....	50
Academic Affairs Division/College of Allied Health Sciences .....	51
Academic Affairs Division/College of Arts & Sciences .....	52
Academic Affairs Division/College of Business .....	53
Academic Affairs Division/College of Education .....	54
Academic Affairs Division/Enrollment Services .....	55
Academic Affairs Division/Gerholz Institute for Lifelong Learning .....	56
Academic Affairs Division/Library .....	57
Academic Affairs Division/College of Optometry .....	58
Academic Affairs Division/College of Pharmacy .....	59
Academic Affairs Division/College of Technology .....	60
Business Affairs Division .....	61
Student Affairs Division .....	62
University Advancement Division .....	63

### ALUMNI

Alumni Listing by State .....	65
Summary of Placement Activity for 1990-91 Graduates .....	66
Beginning Salaries for Baccalaureate Graduates for 1990-91 .....	67
Recipients of Alumni Awards .....	68

### BUDGET

FY-93 General Fund Operating Budget .....	69
Revenue Summary .....	70
Expenditure Summary .....	71
Summary of 1992-93 Tuition Fees & Room/Board .....	72

### FACILITIES

Summary of Facilities Owned or Rented by FSU(General Fund) .....	73
Summary of Facilities Owned or Rented by FSU(Non-General Fund) .....	74
Timme Library .....	75
Ferris State University Campus Map .....	76

---

# General Information

---

## STATEMENT OF MISSION

Ferris State University is Michigan's polytechnic university. Its mission is to teach students in a number of applied technology fields and in other selected professional fields where there is sustained and significant career potential. Ferris educates its students to be employable and capable of professional growth, and further, to contribute to their profession and to a constantly changing, global society.

### Our Students

We are committed to providing our students with strong curricula emphasizing practical, usable skills blended with a relevant general education foundation. This is accomplished in a caring environment with personal attention and close faculty-student interaction. We offer educational opportunity, with an "open door" admission component, to a diverse array of students, including high school graduates, transfer students from other colleges and universities, as well as some non-traditionally prepared students. We also foster positive co-curricular experiences leading to a fulfilling student life.

### Our Programs

We are committed to keeping our educational programs and services responsive to the changing needs of manufacturing, business, health care, and other industries and professions which are critical to Michigan's economy. We achieve this by actively fostering beneficial relationships with those who employ our graduates.

### Our Employees

We are committed to high standards of performance and pride in accomplishment, with the understanding that the strength of our organization is our people. We embrace the concepts of equal opportunity, affirmative action, and cultural diversity. We encourage teamwork, professional growth, acceptance of responsibility, and recognition for achievement.

### Our Communities

We are committed to being good neighbors with full participation in community life and community service. We share local access to educational experiences, business opportunities, cultural events, leisure pursuits, and a variety of other activities with our communities.

### Our State

We are committed to contributing to the economic vitality of our State by providing a well-trained and educated work force. We are actively involved in applied research relative to the transfer, application and management of technology, and its relationship to our society.

## GENERAL INFORMATION

---

### FERRIS STATE UNIVERSITY FACTS AND FIGURES

#### HISTORY

Ferris State University is named for its founder, Woodbridge N. Ferris (1853-1928), a respected Michigan educator and politician who served two terms as the governor of the State of Michigan and was elected to the United States Senate.

Begun in 1884 as a private institution under the name of Big Rapids Industrial School, the school soon changed to the title, Ferris Industrial School and then, in 1899, Ferris Institute. Ferris joined the state higher education system in 1950, became Ferris State College in 1963 by an act of the Michigan Legislature and was granted university status by the Legislature in 1987.

The University's founding concept of providing students with marketable skills, though intended at the time for individuals who had lost their jobs following declines in the lumber and mining industries, remains relevant in today's fast-changing society. A distinctive combination of academic programs and a continuing tradition of career-oriented education have made Ferris a nationally recognized leader in preparing men and women for useful careers and enlightened citizenship in numerous health, technical, educational, business and other professional fields.

**CAMPUS SIZE**                      600 acres

**ACADEMIC DIVISIONS**

- College of Allied Health Sciences
- College of Arts & Sciences
- College of Business
- College of Education
- College of Optometry
- College of Pharmacy
- College of Technology

**ACCREDITATION AND APPROVAL**

Ferris State University is accredited by the North Central Association of Colleges and Schools, and is certified by the State Approval Agency of the Department of Education and the Veterans Administration for the education and training of veterans to attend Ferris under the provisions of Title 38, United States Code.

The National Accreditation Council for Environmental Health Curricula of the National Environmental Health Association has accredited the On-Campus Industrial and Environmental Health Management Program.

The American Medical Association's Committee on Allied Health Education and Accreditation has accredited the Medical Laboratory Technology, Medical Technology, Medical Record Technology, Medical Record Administration, Nuclear Medicine Technology, Radiography and Respiratory Therapy Programs.

The American Dental Association Commission on Dental Accreditation has accredited the Dental Hygiene and Dental Technology programs.

The associate degree nursing program is accredited by the Michigan State Board of Nursing. The Bachelor of Science in nursing program is accredited by the National League for Nursing.

The Accounting program is accredited by the State Board of Accountancy.

The American Bar Association has accredited the Legal Assistant program.

The College of Business is a member of the American Assembly of Collegiate Schools of Business and of the Association of College Business Schools and Programs.

The Optometry Doctoral (OD) Program and the Optometric Technician Program are accredited by the Council on Optometric Education. The Opticianry Program is accredited by the Council on Opticianry Accreditation.

The Pharmacy Program is accredited by the American Council of Pharmaceutical Education.

The Surveying Engineering Program has been accredited by the Engineering Accreditation Commission of the Accreditation Board for Engineering and Technology; and approved by the Michigan State Board of Registration for Architects, Engineers and Professional Land Surveyors.

The Construction Management Program is pending accreditation by the American Council for Construction Education.

All Teacher Education Programs are approved by the Michigan Department of Education.



## GENERAL INFORMATION

---

### EDUCATIONAL GRANTS AND SCHOLARSHIPS

#### FEDERAL

The Federal Pell Grant  
The Supplemental Educational Opportunity Grant

#### STATE

The Michigan Educational Opportunity Grant Program  
The Michigan Adult Part-Time Grant Program

#### INSTITUTIONAL

Founder's Scholarship  
President's Scholarship  
Dean's Scholarship  
Ferris Academic Opportunity Scholarship  
Valedictorian/Salutatorian Award  
Kelso Battle Scholarship  
Community College Transfer Scholarship  
Administrative Management Society Junior Standing Achievement  
Scholarship  
Alumni Scholarship  
American Society for Quality Control Scholarship  
Architectural Building Products Scholarship  
ASHRAE – American Society of Heating, Refrigeration and Air  
Conditioning Engineers  
Tommy Armour Golf Company Scholarship  
The Blanche E. Arnold Scholarship  
Athletic Grants  
Bausch & Lomb "Contact with the Future" Educational Travel Grant  
Bausch and Lomb Excellence in Academic Achievement Scholarship  
Helen Bennett Memorial Award  
Ken Betz Automotive Service Scholarship  
Owen Bieber Scholarship  
Thomas Bingman Memorial Scholarship  
George Bowlby Scholarship  
Butler Paper Scholarship  
Cascade/Paragon Scholarship  
John Celestino Endowed Scholarship  
Brian Chapman Memorial Professional Golf Management Scholarship  
The Elizabeth Claucherty Endowed Scholarship  
College of Business Memorial Scholarship Fund  
The Orrin B. Davenport Scholarship

EDUCATIONAL GRANTS AND SCHOLARSHIPS

INSTITUTIONAL, CONT.

The William Deck Scholarship Fund  
The William E. Dengler Memorial Pharmacy Scholarship  
Dental Hygiene Alumni Scholarship  
DOW-ICT Scholarship  
Gregory Dreuth Memorial Scholarship  
Ewigleben Endowed International Student Scholarship  
The Dean and Mrs. Ben Fairman Scholarship Fund  
The Federated Garden Clubs of Michigan Scholarship  
Ferris Grants-in-Aid  
Phil Flanders Plastics Brotherhood Association Scholarship  
The C. Jerry Ford and Mary E. Ford Memorial Scholarship  
The Ernie Fuller Scholarship  
Seymour Galina Grant  
Debbie Garner Memorial Scholarship  
Golf Manufacturers and Distributors Association Scholarship  
The James A. Gould Memorial Pharmacy Student Assistance Fund  
The Gary Gross, O.D. Scholarship  
The Richard G. Hallisy Student Assistance Fund  
Charles Hampton Memorial Endowed Scholarship  
Handicapped Student Scholarship  
The Kurt Hellthaler Endowed Memorial Ophthalmic Dispensing Award  
Hoexum Scholarship  
Orville C. Hoffman, Jr. Endowed Scholarship  
George N. Holcomb Memorial Scholarship Fund  
Hurst Mechanical, Inc./Refrigeration Engineering, Inc. Scholarship  
Independent Printing Co., Inc. Annual Scholarship  
Ingersoll-Rand Heavy Equipment Technology Scholarship  
Instrument Sales and Service Scholarship  
The Joe Jemsek Scholarship  
The Jerry Jourdain Endowed Memorial Scholarship  
Willis C. Judson Endowed Scholarship  
Gordon Kamstra Memorial Endowed Scholarship  
The Fred W. Kellogg Scholarship  
The Maude Korstange Scholarship  
Thomas F. Love Endowed Swimming Scholarship  
The Ruby MacNeill Endowed Memorial Scholarship  
Dr. Vijay Mahida Surveying Scholarship  
The Jack Marvel Surveying Scholarship  
The Julia B. McCormick Scholarship Fund

## GENERAL INFORMATION

---

### EDUCATIONAL GRANTS AND SCHOLARSHIPS

#### INSTITUTIONAL, CONT.

Michigan Association of Commercial Dental Labs Scholarship  
Michigan Auto Parts Association Scholarship  
Michigan Construction Equipment Dealers Association Scholarship  
Michigan Optometric Association Auxiliary Scholarship  
Michigan Society of Registered Land Surveyors Scholarship  
Charles A. Mount and Dorothy Mount Memorial Scholarship  
The Nordman Foundation Scholarship  
Northamerican Heating and Air Conditioning Association Scholarship  
Outer Drive Hospital Auxiliary Scholarship  
Prakken Scholarship  
The David P. Prior Scholarship  
The Progressive Engineering Consultants of Grand Rapids, Inc.  
Scholarship  
The Allen Puterbaugh Scholarship  
Mylo Ragan Endowed Scholarship  
The Rautiola/Nartron Tennis Scholarship  
Geff Reinke Endowed Scholarship  
Vincent J. Salierno Scholarship  
Joseph D. Sasaki Scholarship Fund  
Donald G. Saum Surveying Scholarship  
Sarah Shell Scholarship Award  
Mike Shira Health Systems Management Scholarship  
Silhouette Optical Student Grant Program  
John R. Smith Memorial Endowed Leadership Scholarship  
Victor and Mercedes Spathelf Scholarship  
Special Ability-Based Scholarship  
SPE South Florida Section Scholarship  
Harry S. Swartz Pharmacy Administration Award  
Surveying Advisory Committee Scholarship  
Walter J. Stevenson Scholarship Fund  
James Stewart Memorial Fund Scholarship  
Anne Szabunia Memorial Scholarship  
Fred E. Taylor Endowed Scholarship  
Technical Education Scholarship  
C. Alan Tressler Memorial Scholarship Fund  
Daniel Tyler Scholarship  
Upper Division Academic Scholarship  
Urban Land Consultants Scholarship  
Varilux II Student Grant

**EDUCATIONAL GRANTS AND SCHOLARSHIPS**

**INSTITUTIONAL, CONT.**

The Helen Ferris Vartan Scholarship Fund  
The Dr. Andrea L. Warfield Memorial Endowed Scholarship  
Wayne County Society of Optometrists Scholarship  
WBDC Scholarship  
West Central Chapter of the Michigan Society of Registered Land  
Surveyors Scholarship  
Dean A. Whitehead Memorial Scholarship  
Wyatt Cafeterias Endowed Scholarship Fund

Source: 1992-1993 School Bulletin

## GENERAL INFORMATION

---

### MICHIGAN ASSOCIATION OF GOVERNING BOARDS

The Michigan Association of Governing Boards (MAGB), an organization of the governing bodies of the thirteen State-supported colleges and universities of Michigan, has, since 1982, been hosting an awards convocation and dinner to honor students and faculty of member institutions for scholarly activity and public service.

#### Ferris State Faculty Honored Include:

1982	Gerald E. Lowther	Optometry
1982	Richard A. Santer	Arts & Sciences
1983	Herbert L. Carson	Arts & Sciences
1983	Nancy P. Uniacke	Optometry
1984	Everett J. Nienhouse	Arts & Sciences
1984	Ann Marie Remp	Business
1985	Ada Lou Carson	Arts & Sciences
1985	Robert E. Friar	Arts & Sciences
1986	Mary L. McCorrison	Arts & Sciences
1986	Michael E. Ryan	Arts & Sciences
1987	Charles R. Hurt	Arts & Sciences
1987	Mark L. Pletz	Optometry
1988	Robert J. Krueger	Pharmacy
1988	Rose Ann Swartz	Business
1989	Richard Pisacreta	Arts & Sciences
1989	Katherine Manley	Education
1990	Robert C. Ferguson	Arts & Sciences
1990	J. James Saladin	Optometry
1991	John P. Caserta	Arts & Sciences
1991	Gary C. Horn	Arts & Sciences
1992	Phillip Sterling	Arts & Sciences
1992	Elizabeth Turpin	Arts & Sciences

#### Student Recipients:

1982	Pamela Sue Fitch	Allied Health
1982	Steven Mark Harvey	Business
1983	Douglas Totten	Optometry
1983	Beth Trombley	Pharmacy
1984	Michele Behne	Arts & Sciences
1984	Kevin Lokar	Arts & Sciences
1985	David Gough	Business
1985	Kathleen Spuller	Arts & Sciences
1986	Bradford Krueger	Arts & Sciences
1986	Diedre Nordlund	Pharmacy
1987	Ann Marie Wilson	Pharmacy
1987	Mark Swan	Optometry
1988	Earl Heron	Technology
1988	Patricia Hoard	Optometry
1989	Lee Peplinski	Optometry
1989	Lisa Kluetz	Pharmacy
1990	Mary Jo Horn	Optometry
1990	David J. Miller	Pharmacy
1991	Alan R. Hopkins	Technology
1991	Brenda L. Spedowski	Business
1992	Jane A. Tughan	Allied Health Sciences
1992	Thomas C. Dowling	Pharmacy

Source: Office of Academic Affairs

---

# **Students/Enrollment**

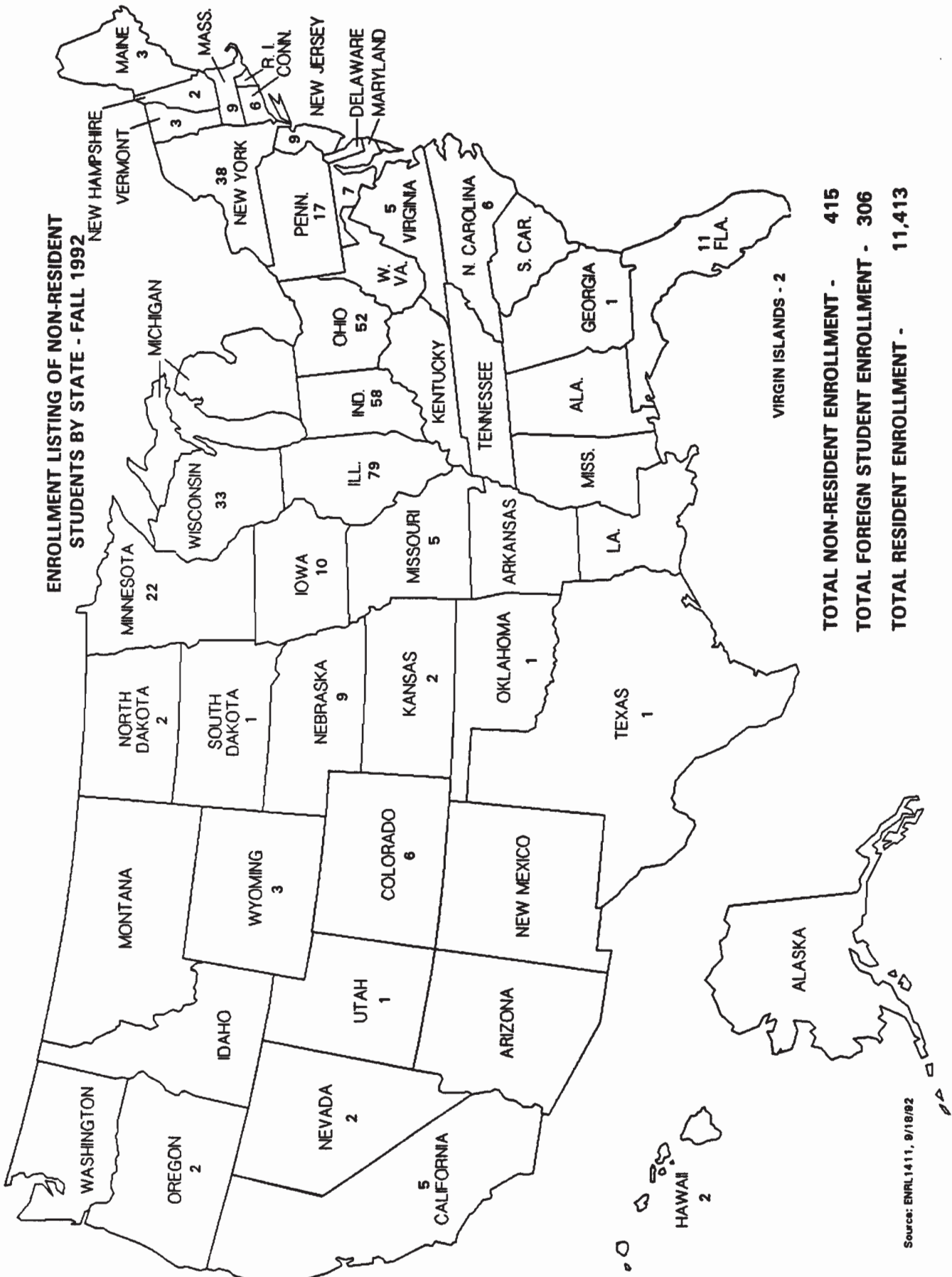
---

ENROLLMENT LISTING OF RESIDENT STUDENTS BY COUNTY - FALL 1992



Source: ENRL1410, 9/21/92

# STUDENTS/ENROLLMENT



Source: ENRL1411, 9/18/92



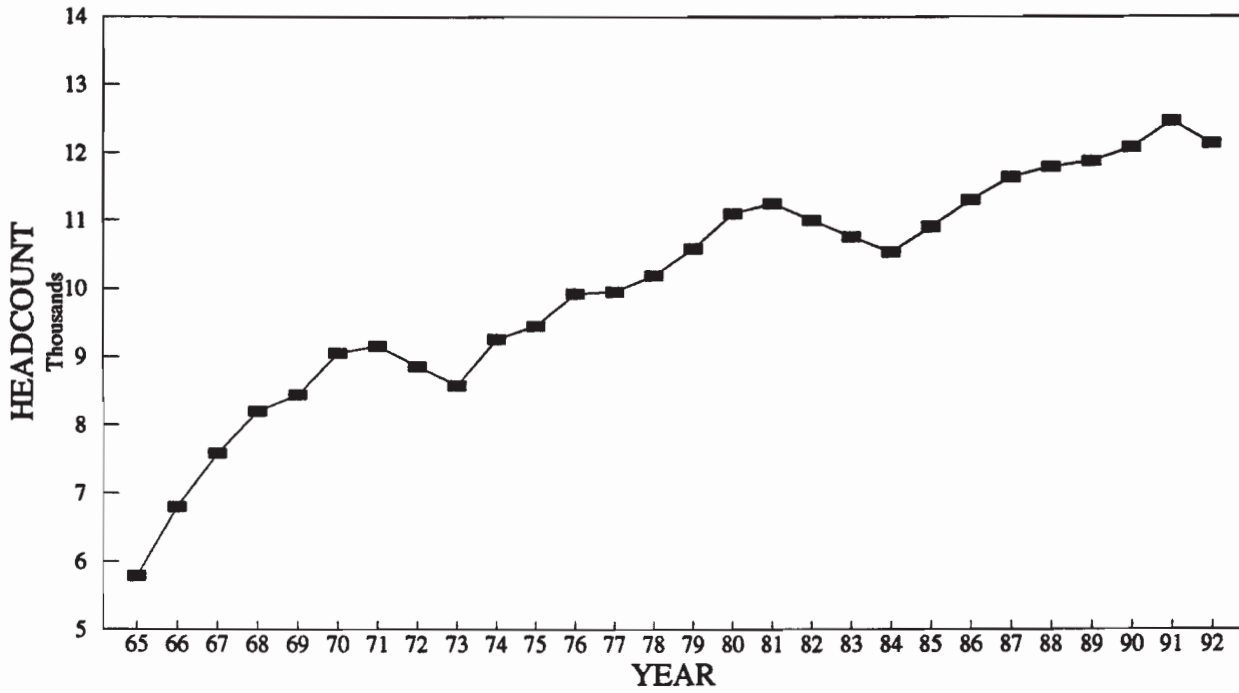
**FERRIS STATE UNIVERSITY  
1992-93 ESTIMATED EXPENSES**

	<b>MICHIGAN RESIDENT</b>		<b>NON-RESIDENT</b>	
	<u>TERM</u>	<u>YEAR</u>	<u>TERM</u>	<u>YEAR</u>
<b>UNDERGRADUATE TUITION:</b>				
Tuition & Fees (12-16 credit hours)	\$990	\$2,970	\$2,005	\$6,015
Room & Board (7-day meal plan)	<u>1235.50</u>	<u>3706.50</u>	<u>1235.50</u>	<u>3706.50</u>
<b>SUBTOTAL</b>	<b>\$2,225.50</b>	<b>\$6,676.50</b>	<b>\$3,240.50</b>	<b>\$9,721.50</b>
Books and Supplies	175	525	175	525
Personal Expenses	210	630	210	630
Refundable Fees	<u>10</u>	<u>30</u>	<u>10</u>	<u>30</u>
<b>ESTIMATED TOTAL EXPENSES</b>	<b>\$2,620.50</b>	<b>\$7,861.50</b>	<b>\$3,635.50</b>	<b>\$10,906.50</b>
<b>PART-TIME TUITION:</b>	\$83 per cr. hr.		\$167 per cr. hr.	
<b>GRADUATE SCHOOL TUITION:</b>	\$107 per cr. hr.		\$214 per cr. hr.	
<b>PROFESSIONAL SCHOOL TUITION:</b>				
Doctor of Optometry	\$2,067	\$6,201	\$4,182	\$12,546
Doctor of Pharmacy	\$2,067	\$6,201	\$4,182	\$12,546
<b>FAMILY APARTMENTS</b>				
One Bedroom	\$293 per month		\$293 per month	
Two Bedroom	\$312 per month		\$312 per month	
<b>ALTERNATE MEAL PLAN</b>				
Room and Board (5-day meal plan)	\$1,153.50	\$3,460.50	\$1,153.50	\$3,460.50

Source: Enrollment Services

**STUDENTS/ENROLLMENT**

**TOTAL HEADCOUNT ENROLLMENT**



**TOTAL HEADCOUNT ENROLLMENT  
FALL ENROLLMENT**

1965	5,787	1979	10,596
1966	6,801	1980	11,112
1967	7,581	1981	11,261
1968	8,200	1982	11,008
1969	8,439	1983	10,767
1970	9,057	1984	10,540
1971	9,161	1985	10,909
1972	8,864	1986	11,310
1973	8,584	1987	11,643
1974	9,264	1988	11,792
1975	9,460	1989	11,878
1976	9,934	1990	12,076
1977	9,965	1991	12,461
1978	10,208	1992	12,134

Source: Fall Quarter Enrollment Report  
Office of the Registrar

**FERRIS STATE UNIVERSITY  
5-YEAR HEADCOUNT ENROLLMENT OVERVIEW BY COLLEGE  
FALL QUARTER**

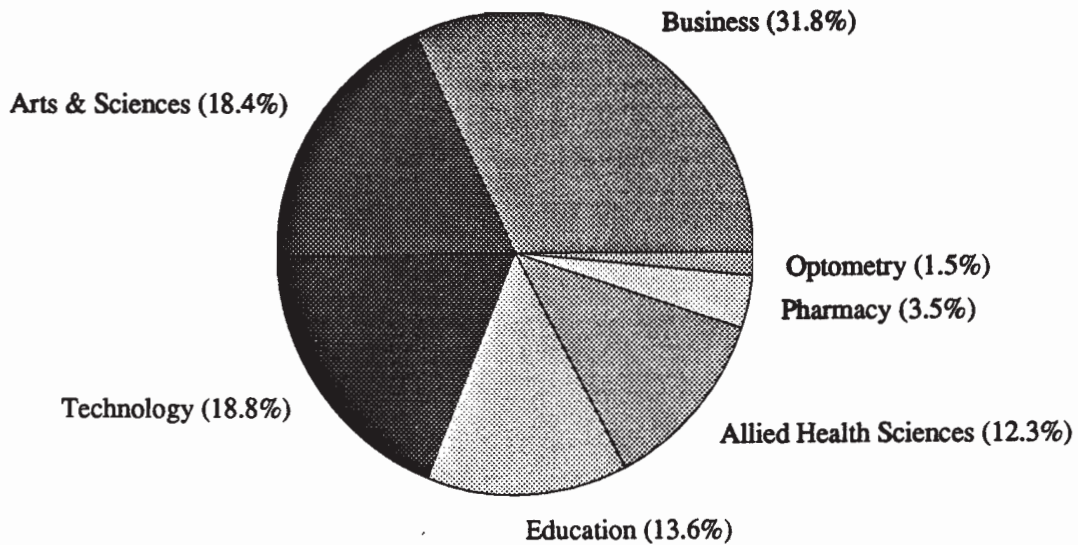
<b>COLLEGE</b>	<b>1988-89</b>	<b>1989-90</b>	<b>1990-91</b>	<b>1991-92</b>	<b>1992-93</b>
ALLIED HEALTH SCIENCES	1,008	968	1,082	1,302	1,495
ARTS & SCIENCES	2,293	2,471	2,469	2,299	2,230
BUSINESS	4,230	4,298	4,336	4,384	3,864
EDUCATION	1,375	1,255	1,389	1,547	1,651
OPTOMETRY	203	297	169	174	187
PHARMACY	385	380	390	420	427
TECHNOLOGY	2,298	2,209	2,241	2,335	2,280
<b>TOTAL</b>	<b>11,792</b>	<b>11,878</b>	<b>12,076</b>	<b>12,461</b>	<b>12,134</b>

Source: Fall Quarter Enrollment Report  
Office of the Registrar

## STUDENTS/ENROLLMENT

---

### PERCENT OF STUDENTS BY COLLEGE FALL QUARTER 1992



#### STUDENT ENROLLMENT BY COLLEGE

BUSINESS	3,864
ARTS & SCIENCES	2,230
TECHNOLOGY	2,280
EDUCATION	1,651
ALLIED HEALTH SCIENCES	1,495
PHARMACY	427
OPTOMETRY	187
<b>TOTAL</b>	<b>12,134</b>

Source: Fall Quarter Enrollment Report  
Office of the Registrar

## COMPARATIVE ENROLLMENT REPORT BY COLLEGE

COLLEGE	MEN	WOMEN	1992 TOTAL	1991 TOTAL
<b>BUSINESS</b>	<b>2,246</b>	<b>1,618</b>	<b>3,864</b>	<b>4,384</b>
Masters Degree	28	16	44	47
B.S. Degree	2,055	1,220	3,275	3,659
Associate Degree	163	382	545	678
<b>ARTS &amp; SCIENCES</b>	<b>1,128</b>	<b>1,102</b>	<b>2,230</b>	<b>2,299</b>
B.S. Degree	129	236	365	368
Associate Degree	203	198	401	112
Pre-Professional	401	460	861	1,238
General Studies	395	208	603	581
<b>TECHNOLOGY</b>	<b>2,113</b>	<b>167</b>	<b>2,280</b>	<b>2,335</b>
B.S. Degree	757	42	799	713
Associate Degree	1,356	125	1,481	1,622
<b>EDUCATION</b>	<b>1,015</b>	<b>636</b>	<b>1,651</b>	<b>1,547</b>
Masters Degree	20	29	49	31
B.S. Degree	698	349	1,047	1,280
Associate Degree	241	159	400	89
*Pre-teaching	56	99	155	147
<b>ALLIED HEALTH SCIENCES</b>	<b>315</b>	<b>1,180</b>	<b>1,495</b>	<b>1,302</b>
B.S. Degree	183	462	645	575
Associate Degree	101	490	591	523
*Pre-professional	31	228	259	204
<b>PHARMACY</b>	<b>192</b>	<b>235</b>	<b>427</b>	<b>420</b>
B.S. Degree	188	228	416	408
Pharm D Degree	4	7	11	12
<b>OPTOMETRY</b>	<b>95</b>	<b>92</b>	<b>187</b>	<b>174</b>
O.D. Degree	76	47	123	121
Associate Degree	19	45	64	53
<b>TOTALS</b>	<b>7,104</b>	<b>5,030</b>	<b>12,134</b>	<b>12,461</b>

\*Effective Fall Quarter 1991, Pre-Teaching was transferred to the College of Education and several Pre-Professional programs were transferred to the College of Allied Health Sciences from the College of Arts & Sciences.

Source: Fall Quarter Enrollment Report  
Office of the Registrar

# STUDENTS/ENROLLMENT

## ENROLLMENT BY AGE UNDERGRADUATE STUDENTS FALL 1992

AGE	FULL-TIME STUDENTS				PART-TIME STUDENTS			
	MALE	FEMALE	GRAND TOTAL		MALE	FEMALE	GRAND TOTAL	
>18	73	107	180	1.77%	4	3	7	0.42%
18	951	772	1,723	16.92%	12	13	25	1.50%
19	1,060	695	1,755	17.24%	32	29	61	3.67%
20	935	725	1,660	16.30%	75	34	109	6.55%
21	1,004	622	1,626	15.97%	93	50	143	8.60%
22	797	417	1,214	11.92%	100	53	153	9.20%
23	445	172	617	6.06%	61	32	93	5.59%
24	226	99	325	3.19%	52	25	77	4.63%
25	145	76	221	2.17%	21	15	36	2.16%
26	93	45	138	1.36%	25	19	44	2.65%
27	62	32	94	0.92%	21	19	40	2.41%
28	44	36	80	0.79%	26	26	52	3.13%
29	36	33	69	0.68%	26	22	48	2.89%
30	28	25	53	0.52%	21	27	48	2.89%
31	23	25	48	0.47%	26	18	44	2.65%
32	24	21	45	0.44%	16	23	39	2.35%
33	17	21	38	0.37%	13	29	42	2.53%
34	18	23	41	0.40%	19	28	47	2.83%
35	12	21	33	0.32%	21	23	44	2.65%
36	14	14	28	0.28%	20	33	53	3.19%
37	14	11	25	0.25%	13	33	46	2.77%
38	10	11	21	0.21%	20	30	50	3.01%
39	5	17	22	0.22%	21	32	53	3.19%
40	12	10	22	0.22%	7	23	30	1.80%
41	7	10	17	0.17%	10	24	34	2.04%
42	8	11	19	0.19%	11	16	27	1.62%
43	9	3	12	0.12%	9	24	33	1.98%
44	5	3	8	0.08%	11	16	27	1.62%
45	3	10	13	0.13%	11	14	25	1.50%
46	2	1	3	0.03%	8	15	23	1.38%
47	0	7	7	0.07%	1	14	15	0.90%
48	4	2	6	0.06%	5	8	13	0.78%
49	1	2	3	0.03%	4	8	12	0.72%
50	1	3	4	0.04%	1	3	4	0.24%
51	1	0	1	0.01%	3	7	10	0.60%
52	1	0	1	0.00%	1	2	3	0.18%
53	1	0	1	0.01%	0	6	6	0.36%
54	0	0	0	0.00%	1	1	2	0.12%
55	1	0	1	0.01%	2	3	5	0.30%
56	0	0	0	0.00%	1	3	4	0.24%
57	1	0	1	0.01%	1	0	1	0.06%
58	0	0	0	0.00%	0	0	0	0.00%
59	1	1	2	0.02%	0	0	0	0.00%
60	0	0	0	0.00%	0	1	1	0.06%
61	0	0	0	0.00%	0	0	0	0.00%
62	0	0	0	0.00%	0	1	1	0.06%
63	0	0	0	0.00%	0	0	0	0.00%
64	0	0	0	0.00%	0	0	0	0.00%
65	0	0	0	0.00%	0	0	0	0.00%
UNKNOWN	3	1	4	0.04%	15	18	33	1.98%
<b>TOTAL</b>	<b>6,097</b>	<b>4,084</b>	<b>10,181</b>	<b>100.00%</b>	<b>840</b>	<b>823</b>	<b>1,663</b>	<b>100.00%</b>

**TOTAL FULL-TIME AND PART-TIME**

	<b>6,937</b>	<b>4,907</b>	<b>11,844</b>
Average Age - Full-Time			<b>21</b>
Average Age - Part-Time			<b>30</b>
Average Age Full-Time and Part-Time			<b>22</b>

STUDENTS/ENROLLMENT

ENROLLMENT BY AGE  
GRADUATE STUDENTS  
FALL 1992

AGE	FULL-TIME STUDENTS			PART-TIME STUDENTS				
	MALE	FEMALE	GRAND TOTAL	MALE	FEMALE	GRAND TOTAL		
>18	0	0	0	0.00%	0	0	0	0.00%
18	0	0	0	0.00%	0	0	0	0.00%
19	0	0	0	0.00%	0	0	0	0.00%
20	0	0	0	0.00%	0	0	0	0.00%
21	0	0	0	0.00%	0	0	0	0.00%
22	1	2	3	17.65%	0	0	0	0.00%
23	1	0	1	5.88%	1	2	3	3.95%
24	1	0	1	5.88%	1	1	2	2.63%
25	0	0	0	0.00%	0	1	1	1.32%
26	0	2	2	11.76%	0	3	3	3.95%
27	2	0	2	11.76%	1	0	1	1.32%
28	1	0	1	5.88%	1	1	2	2.63%
29	1	0	1	5.88%	1	0	1	1.32%
30	0	0	0	0.00%	4	0	4	5.26%
31	0	0	0	0.00%	0	1	1	1.32%
32	0	0	0	0.00%	2	2	4	5.26%
33	0	0	0	0.00%	2	1	3	3.95%
34	0	1	1	5.88%	0	2	2	2.63%
35	0	0	0	0.00%	1	1	2	2.63%
36	0	0	0	0.00%	2	0	2	2.63%
37	0	0	0	0.00%	1	2	3	3.95%
38	0	0	0	0.00%	3	3	6	7.89%
39	0	0	0	0.00%	3	3	6	7.89%
40	0	1	1	5.88%	2	1	3	3.95%
41	0	0	0	0.00%	2	2	4	5.26%
42	0	0	0	0.00%	1	1	2	2.63%
43	1	0	1	5.88%	2	1	3	3.95%
44	0	0	0	0.00%	2	1	3	3.95%
45	0	0	0	0.00%	0	1	1	1.32%
46	0	0	0	0.00%	0	3	3	3.95%
47	0	0	0	0.00%	2	1	3	3.95%
48	1	0	1	5.88%	0	0	0	0.00%
49	0	0	0	0.00%	0	1	1	1.32%
50	0	0	0	0.00%	0	1	1	1.32%
51	1	0	1	5.88%	0	0	0	0.00%
52	0	0	0	0.00%	2	0	2	2.63%
53	0	0	0	0.00%	0	1	1	1.32%
54	0	0	0	0.00%	1	0	1	1.32%
55	0	0	0	0.00%	0	0	0	0.00%
56	0	0	0	0.00%	0	1	1	1.32%
57	0	0	0	0.00%	0	0	0	0.00%
58	0	0	0	0.00%	0	0	0	0.00%
59	0	1	1	5.88%	0	0	0	0.00%
60	0	0	0	0.00%	0	0	0	0.00%
61	0	0	0	0.00%	0	0	0	0.00%
62	0	0	0	0.00%	0	0	0	0.00%
63	0	0	0	0.00%	0	0	0	0.00%
64	0	0	0	0.00%	0	0	0	0.00%
65	0	0	0	0.00%	0	0	0	0.00%
UNKNOWN	0	0	0	0.00%	1	0	1	1.32%
<b>TOTAL</b>	<b>10</b>	<b>7</b>	<b>17</b>	<b>100.00%</b>	<b>38</b>	<b>38</b>	<b>76</b>	<b>100.00%</b>

TOTAL FULL-TIME AND PART-TIME

	48	45	93
Average Age - Full-Time			32
Average Age - Part-Time			37
Average Age Full-Time and Part-Time			37

# STUDENTS/ENROLLMENT

## ENROLLMENT BY AGE FIRST PROFESSIONAL STUDENTS FALL 1992

AGE	FULL-TIME STUDENTS				PART-TIME STUDENTS		
	MALE	FEMALE	GRAND TOTAL		MALE	FEMALE	GRAND TOTAL
>18	0	0	0	0.00%	0	0	0
18	0	0	0	0.00%	0	0	0
19	0	0	0	0.00%	0	0	0
20	0	1	1	0.75%	0	0	0
21	5	7	12	8.96%	0	0	0
22	15	11	26	19.40%	0	0	0
23	13	12	25	18.66%	0	0	0
24	11	8	19	14.18%	0	0	0
25	11	3	14	10.45%	0	0	0
26	8	4	12	8.96%	0	0	0
27	2	1	3	2.24%	0	0	0
28	2	1	3	2.24%	0	0	0
29	1	1	2	1.49%	0	0	0
30	5	2	7	5.22%	0	0	0
31	3	0	3	2.24%	0	0	0
32	0	2	2	1.49%	0	0	0
33	1	0	1	0.75%	0	0	0
34	1	1	2	1.49%	0	0	0
35	0	0	0	0.00%	0	0	0
36	0	0	0	0.00%	0	0	0
37	1	0	1	0.75%	0	0	0
38	0	0	0	0.00%	0	0	0
39	1	0	1	0.75%	0	0	0
40	0	0	0	0.00%	0	0	0
41	0	0	0	0.00%	0	0	0
42	0	0	0	0.00%	0	0	0
43	0	0	0	0.00%	0	0	0
44	0	0	0	0.00%	0	0	0
45	0	0	0	0.00%	0	0	0
46	0	0	0	0.00%	0	0	0
47	0	0	0	0.00%	0	0	0
48	0	0	0	0.00%	0	0	0
49	0	0	0	0.00%	0	0	0
50	0	0	0	0.00%	0	0	0
51	0	0	0	0.00%	0	0	0
52	0	0	0	0.00%	0	0	0
53	0	0	0	0.00%	0	0	0
54	0	0	0	0.00%	0	0	0
55	0	0	0	0.00%	0	0	0
56	0	0	0	0.00%	0	0	0
57	0	0	0	0.00%	0	0	0
58	0	0	0	0.00%	0	0	0
59	0	0	0	0.00%	0	0	0
60	0	0	0	0.00%	0	0	0
61	0	0	0	0.00%	0	0	0
62	0	0	0	0.00%	0	0	0
63	0	0	0	0.00%	0	0	0
64	0	0	0	0.00%	0	0	0
65	0	0	0	0.00%	0	0	0
UNKNOWN	0	0	0	0.00%	0	0	0
<b>TOTAL</b>	<b>80</b>	<b>54</b>	<b>134</b>	<b>100.00%</b>	<b>0</b>	<b>0</b>	<b>0</b>

**TOTAL FULL-TIME AND PART-TIME**

**80                      54                      134**

**Average Age - Full-Time                      25**

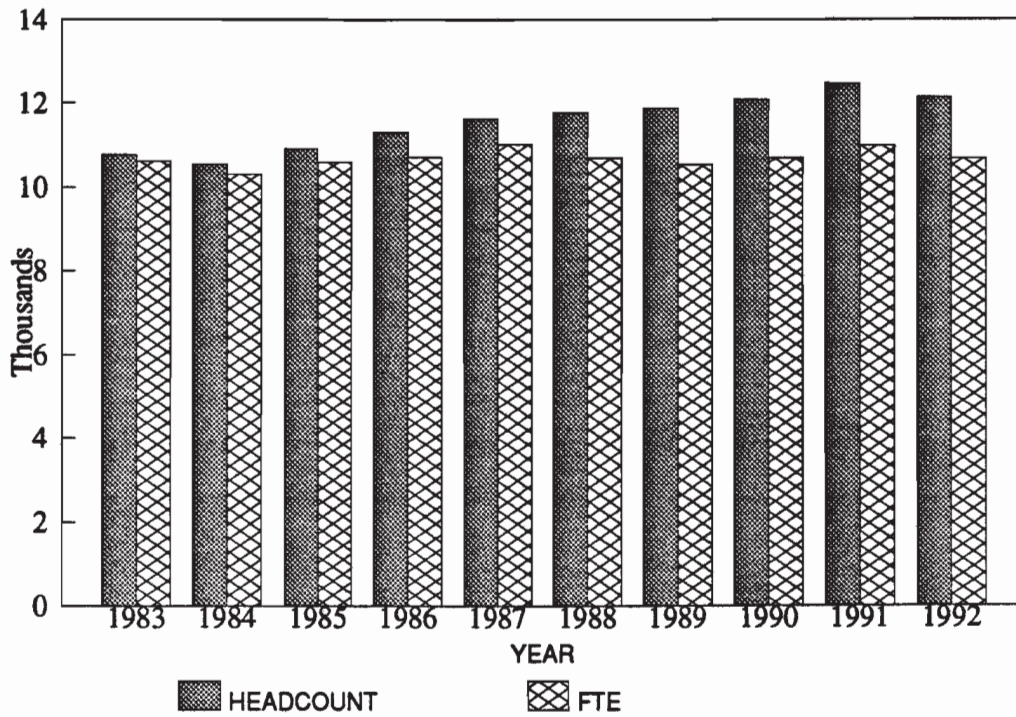
**Average Age - Part-Time                      0**

**Average Age Full-Time and Part-Time                      25**

Source: INST2613-1, 9/21/92  
IPEDS Age Report, Fall 1992



TOTAL HEADCOUNT ENROLLMENT COMPARED TO FTE



YEAR	HEADCOUNT	FTE
1983	10,767	10,618
1984	10,540	10,309
1985	10,909	10,608
1986	11,310	10,719
1987	11,643	11,024
1988	11,792	10,708
1989	11,878	10,548
1990	12,076	10,695
1991	12,461	10,988
1992	12,134	10,682

NOTE: FTE - Full-Time Equated Student, i.e., 2 Half-Time Students = 1 FTE

Source: Headcount Enrollment: Fall Quarter Enrollment Report  
 Student FTE: FACL 2425-2, Fall Quarter

## STUDENTS/ENROLLMENT

---

### STUDENT CREDIT HOUR PRODUCTION FOR FALL QUARTER

FALL QUARTER	LOWER	UPPER	GRADUATE	TOTAL
80/81	116,754	55,650	2,064	174,468
81/82	116,281	58,193	2,266	176,740
82/83	110,597	58,352	2,085	171,034
83/84	106,285	56,200	2,087	164,572
84/85	99,711	57,394	2,080	159,185
85/86	104,502	53,747	2,285	160,534
86/87	107,788	52,205	2,641	162,634
87/88	113,575	53,775	2,723	170,073
88/89	106,499	55,915	2,751	165,165
89/90	102,483	57,181	2,968	162,632
90/91	107,185	54,647	3,054	164,886
91/92	105,601	61,178	2,737	169,516
92/93	99,166	62,661	2,904	164,731

Source: Student Credit Hour Production—Total College  
FACL2425-1 Fall Quarter Report

## GRADE DISTRIBUTION REPORT

### FALL 1992-1993

<u>COLLEGE</u>	<u>A</u>	<u>B</u>	<u>C</u>	<u>D</u>	<u>F</u>	<u>I</u>	<u>W/D</u>	<u>TOTAL</u>
<b>ALLIED HEALTH SCIENCES</b>	1,024	890	360	72	29	36	77	2,488
%	41.2%	35.8%	14.5%	2.9%	1.2%	1.4%	3.1%	
Audit-0								
<b>ARTS &amp; SCIENCES</b>	4,666	6,616	5,254	1,965	1,274	202	1,803	22,382
%	20.8%	29.6%	23.5%	8.8%	5.7%	0.9%	8.1%	
Audit-0								
Credit-533								
No Credit-69								
<b>BUSINESS</b>	2,013	3,452	2,627	789	336	133	645	10,437
%	19.3%	33.1%	25.2%	7.6%	3.2%	1.3%	6.2%	
Audit-18								
Credit-416								
No Credit-3								
In Progress-5								
<b>EDUCATION</b>	1,333	1,021	323	70	59	111	141	3,088
%	43.2%	33.1%	10.5%	2.3%	1.9%	3.6%	4.6%	
Audit-0								
Credit-7								
In Progress-23								
<b>OPTOMETRY</b>	256	234	84	16	11	7	7	736
%	34.8%	31.8%	11.4%	2.2%	1.5%	1.0%	1.0%	
Credit-31								
In Progress-90								
<b>PHARMACY</b>	358	743	603	179	77	26	40	2,030
%	17.6%	36.6%	29.7%	8.8%	3.8%	1.3%	2.0%	
Audit-4								
<b>TECHNOLOGY</b>	1,305	1,908	1,017	253	145	31	175	4,846
%	26.9%	39.4%	21.0%	5.2%	3.0%	0.6%	3.6%	
Credit-4								
Audit-7								
In Progress-1								
<b>GRAND TOTAL</b>	<b>10,955</b>	<b>14,864</b>	<b>10,268</b>	<b>3,344</b>	<b>1,931</b>	<b>546</b>	<b>2,888</b>	<b>46,007</b>
%	<b>23.8%</b>	<b>32.3%</b>	<b>22.3%</b>	<b>7.3%</b>	<b>4.2%</b>	<b>1.2%</b>	<b>6.3%</b>	
Audit-29								
Credit-991								
In Progress-119								
No Credit-72								

Source: Grad1400, Fall 92-93

# STUDENTS/ENROLLMENT

## ENROLLMENT BY PROGRAM FALL TERM

COLLEGE	1987/88	1988/89	1989/90	1990/91	1991/92	1992/93
<b>ALLIED HEALTH SCIENCES</b>						
<b>DENTAL</b>						
Dental Assisting	33	26	28	25	14	2
Dental Hygiene	113	115	106	113	114	123
Dental Technology	61	55	48	42	31	29
<b>DEPARTMENT TOTAL</b>	<b>207</b>	<b>196</b>	<b>182</b>	<b>180</b>	<b>159</b>	<b>154</b>
<b>ENVIRONMENTAL AND CLINICAL SCIENCE</b>						
Industrial & Env Health Mgt	73	74	90	118	133	157
Medical Technology	55	60	50	49	54	51
Medical Lab Technology	21	27	19	29	17	12
<b>DEPARTMENT TOTAL</b>	<b>149</b>	<b>161</b>	<b>159</b>	<b>196</b>	<b>204</b>	<b>220</b>
<b>HOSPITAL RELATED</b>						
Respiratory Care	28	19	24	24	25	47
Radiography	90	93	86	110	109	141
Nuclear Med 2-Yr	23	29	39	40	38	44
Nuclear Med 4-Yr	16	18	15	22	25	21
<b>DEPARTMENT TOTAL</b>	<b>157</b>	<b>159</b>	<b>164</b>	<b>196</b>	<b>197</b>	<b>253</b>
<b>NURSING</b>						
Nursing 2-Yr	60	50	56	63	84	109
Nursing 4-Yr	24	23	13	13	6	10
<b>Total</b>	<b>84</b>	<b>73</b>	<b>69</b>	<b>76</b>	<b>90</b>	<b>119</b>
<b>OFF-CAMPUS</b>						
Nursing 4-Yr	146	184	145	147	147	165
<b>Off-Campus Total</b>	<b>146</b>	<b>184</b>	<b>145</b>	<b>147</b>	<b>147</b>	<b>165</b>
<b>DEPARTMENT TOTAL</b>	<b>230</b>	<b>257</b>	<b>214</b>	<b>223</b>	<b>237</b>	<b>284</b>
<b>PRE-ALLIED HEALTH</b>						
Pre-Industrial & Env Health*	0	0	0	0	7	5
Pre-Medical Tech*	0	0	0	0	7	12
Pre-Dental Hygiene*	0	0	0	0	70	59
Pre-Dental Tech	0	0	0	0	0	0
Pre-Med Lab Tech 2-Yr*	0	0	0	0	6	7
Pre-Respiratory Care*	0	0	0	0	3	12
Pre-Radiography*	0	0	0	0	19	26
Pre-Nursing 2-Yr*	0	0	0	0	85	125
Pre-Health Info Tech	0	0	0	0	0	4
Pre-Health Info Mgt	0	0	0	0	0	0
Pre-Nuclear Med 2-Yr*	0	0	0	0	4	8
Pre-Nuclear Med 4-Yr*	0	0	0	0	0	0
Pre-Health Systems	0	0	0	0	0	1
Pre-Med Records T*	0	0	0	0	3	
<b>DEPARTMENT TOTAL</b>	<b>0</b>	<b>0</b>	<b>0</b>	<b>0</b>	<b>204</b>	<b>259</b>

## STUDENTS/ENROLLMENT

COLLEGE	1987/88	1988/89	1989/90	1990/91	1991/92	1992/93
<b>ALLIED HEALTH SCIENCES</b>						
<b>HEALTH MANAGEMENT</b>						
Health Info Tech 2-Yr	0	0	0	0	0	72
Health Info Mgt 4-Yr	0	0	0	0	0	53
Medical Records Tech	70	57	55	50	63	
BS Medical Records	70	79	64	65	54	
Health Systems Mgt	44	49	50	50	48	68
Health Systems	0	0	0	1	0	0
Occ Safety & Health 4-Yr	1	0	0	0	0	0
<b>DEPARTMENT TOTAL</b>	<b>185</b>	<b>185</b>	<b>169</b>	<b>166</b>	<b>165</b>	<b>193</b>
<b>OFF-CAMPUS</b>						
Undeclared	0	1	34	43	57	49
EXD Environmental Health	2	0	0	0	1	2
EXD Health Systems Mgt	65	41	25	23	34	55
EXD Undeclared	4	3	1	1	0	2
Medical Records Tech	0	0	0	20	28	12
BS Medical Records Adm	9	5	20	34	16	12
<b>Off-Campus Total</b>	<b>80</b>	<b>50</b>	<b>80</b>	<b>121</b>	<b>136</b>	<b>132</b>
<b>ON-CAMPUS TOTAL</b>	<b>782</b>	<b>774</b>	<b>743</b>	<b>814</b>	<b>1,019</b>	<b>1,198</b>
<b>OFF-CAMPUS TOTAL</b>	<b>226</b>	<b>234</b>	<b>225</b>	<b>268</b>	<b>283</b>	<b>297</b>
<b>COLLEGE TOTAL</b>	<b>1,008</b>	<b>1,008</b>	<b>968</b>	<b>1,082</b>	<b>1,302</b>	<b>1,495</b>

\*Students are lacking prerequisite courses or have a low GPA in certain areas.

# STUDENTS/ENROLLMENT

## ENROLLMENT BY PROGRAM FALL TERM

COLLEGE	1987/88	1988/89	1989/90	1990/91	1991/92	1992/93
<b>ARTS &amp; SCIENCES</b>						
Evening College	158	189	207	170	132	110
<b>BIOLOGY</b>						
Ornamental Hort 2-Yr	28	33	28	34	41	31
Applied Biology 4-Yr	58	63	89	107	117	98
Biotechnology	0	3	8	7	9	14
<b>DEPARTMENT TOTAL</b>	<b>244</b>	<b>288</b>	<b>332</b>	<b>318</b>	<b>299</b>	<b>253</b>
<b>PHYSICAL SCIENCES</b>						
Industrial Chemical Tech	13	13	22	20	20	25
<b>DEPARTMENT TOTAL</b>	<b>13</b>	<b>13</b>	<b>22</b>	<b>20</b>	<b>20</b>	<b>25</b>
<b>MATHEMATICS</b>						
Actuarial Science—Math	0	0	0	0	3	7
Applied Math	18	19	22	21	15	9
<b>DEPARTMENT TOTAL</b>	<b>18</b>	<b>19</b>	<b>22</b>	<b>21</b>	<b>18</b>	<b>16</b>
<b>LANGUAGES &amp; LITERATURE</b>						
Journalism Associate	66	53	73	76	51	49
Technical Communications	11	14	16	12	13	13
<b>DEPARTMENT TOTAL</b>	<b>77</b>	<b>67</b>	<b>89</b>	<b>88</b>	<b>64</b>	<b>62</b>
<b>SOCIAL SCIENCES</b>						
Child Development*	66	0	0	0	0	0
BS Social Work	245	270	267	274	211	224
<b>DEPARTMENT TOTAL</b>	<b>311</b>	<b>270</b>	<b>267</b>	<b>274</b>	<b>211</b>	<b>224</b>
<b>STUDENT DEVELOPMENT SERVICES</b>						
Intensive English Program	58	76	50	67	68	98
General Studies	546	437	494	535	581	603
<b>DEPARTMENT TOTAL</b>	<b>604</b>	<b>513</b>	<b>544</b>	<b>602</b>	<b>649</b>	<b>701</b>
<b>PRE-PROF NON-SCIENCES</b>						
Pre-Arts/Liberal Arts***	239	247	250	252	413	296
Pre-Law	46	58	72	68	74	66
Pre-Teaching Elementary**	94	103	100	85	0	0
Pre-Teaching Secondary**	70	69	56	58	0	0
<b>DEPARTMENT TOTAL</b>	<b>449</b>	<b>477</b>	<b>478</b>	<b>463</b>	<b>487</b>	<b>362</b>
<b>PRE-PROF SCIENCE</b>						
Pre-Science	138	116	121	144	38	26
Pre-Dentistry	18	17	29	32	20	19
Pre-Engineering	36	39	54	45	40	30
Pre-Medicine	33	24	49	49	38	44
Pre-Mortuary Science	8	11	15	10	13	11
Pre-Veterinary Science	16	8	14	17	22	23
Pre-Optometry	134	114	130	120	114	131
Pre-Pharmacy	286	317	305	266	266	303
<b>DEPARTMENT TOTAL</b>	<b>669</b>	<b>646</b>	<b>717</b>	<b>683</b>	<b>551</b>	<b>587</b>
<b>COLLEGE TOTAL</b>	<b>2,385</b>	<b>2,293</b>	<b>2,471</b>	<b>2,469</b>	<b>2,299</b>	<b>2,230</b>

\*Child Development transferred to College of Education in 1988

\*\*Moved to College of Education 1991/92

\*\*\*Pre-Arts changed to Liberal Arts 1992/93

**ENROLLMENT BY PROGRAM  
FALL TERM**

COLLEGE	1987/88	1988/89	1989/90	1990/91	1991/92	1992/93
<b>BUSINESS</b>						
<b>ACCOUNTANCY</b>						
Master/Accountancy	4	6	10	7	9	8
Accounting 4-Yr	316	302	311	319	335	253
Accounting Finance 4-Yr	44	52	54	56	54	47
Accounting Transfer	35	30	24	26	30	28
<b>Total</b>	<b>399</b>	<b>390</b>	<b>399</b>	<b>408</b>	<b>428</b>	<b>336</b>
<b>OFF-CAMPUS</b>						
Accounting 4-Yr	16	40	41	28	13	9
Accounting Transfer	0	0	0	8	22	33
Undeclared	0	1	48	46	50	46
<b>Off-Campus Total</b>	<b>16</b>	<b>41</b>	<b>89</b>	<b>82</b>	<b>85</b>	<b>88</b>
<b>DEPARTMENT TOTAL</b>	<b>415</b>	<b>431</b>	<b>488</b>	<b>490</b>	<b>513</b>	<b>424</b>
<b>MANAGEMENT</b>						
Production Mgt 4-Yr	15	20	26	23	28	13
Production Mgt Transfer	28	36	31	23	14	13
Management	219	222	252	249	234	180
Mgt Transfer	37	34	27	23	26	26
Business Administration	595	648	609	592	554	468
Business Admin Transfer	75	76	73	68	71	75
Finance 4-Yr	54	50	53	62	77	67
Insurance 4-Yr	29	37	35	32	34	37
Insurance/Real Estate 4-Yr	16	17	27	37	30	21
Real Estate 2-Yr	24	25	21	29	13	22
Legal Assistant	75	55	65	88	96	79
Insurance Transfer	2	6	5	3	8	7
International Business	54	39	41	49	60	72
International Bus Transfer	7	6	3	2	6	6
Finance Transfer	10	16	14	15	6	5
Personnel Mgt/Ind Relations	52	34	25	31	40	40
Per Mgt/Ind Rel Transfer	9	10	8	8	7	6
Small Business Mgt	58	66	62	57	58	61
Small Bus Mgt Transfer	13	10	14	12	23	19
Business Economics	13	19	13	16	15	4
Bus Economics Transfer	2	1	2	1	0	0
Quantitative Business	2	7	6	4	5	6
Qnt Business Transfer	3	2	2	1	0	2
<b>Total</b>	<b>1,392</b>	<b>1,436</b>	<b>1,414</b>	<b>1,425</b>	<b>1,405</b>	<b>1,229</b>
<b>OFF-CAMPUS</b>						
Business Administration	105	157	150	65	48	25
Bus Admin Transfer	0	0	0	65	118	141
<b>Off-Campus Total</b>	<b>105</b>	<b>157</b>	<b>150</b>	<b>130</b>	<b>166</b>	<b>166</b>
<b>DEPARTMENT TOTAL</b>	<b>1,497</b>	<b>1,593</b>	<b>1,564</b>	<b>1,555</b>	<b>1,571</b>	<b>1,395</b>
<b>DIVERSIFIED BUSINESS</b>						
Accelerated Business	2	0	2	1	0	0
Diversified Business	62	57	63	60	33	28
<b>DEPARTMENT TOTAL</b>	<b>64</b>	<b>57</b>	<b>65</b>	<b>61</b>	<b>33</b>	<b>28</b>

# STUDENTS/ENROLLMENT

COLLEGE	1987/88	1988/89	1989/90	1990/91	1991/92	1992/93
<b>BUSINESS</b>						
Computer Information Systems						
CIS 4-Yr	237	196	183	198	217	155
CIS Accounting 4-Yr	96	69	58	49	54	43
CIS Marketing 4-Yr	24	26	25	21	19	13
CIS 4-Yr Transfer	61	46	49	38	31	32
CIS Mgt 4-Yr	77	71	65	68	61	45
Master CIS Mgt	0	3	10	9	13	10
Master CIS Mgt Conditional	0	7	9	12	9	11
<b>Total</b>	<b>495</b>	<b>418</b>	<b>399</b>	<b>395</b>	<b>404</b>	<b>309</b>
<b>OFF-CAMPUS</b>						
Master CIS Mgt		1	4	10	8	9
Master CIS Mgt Conditional		3	5	11	8	6
<b>Off-Campus Total</b>	<b>0</b>	<b>4</b>	<b>9</b>	<b>21</b>	<b>16</b>	<b>15</b>
<b>DEPARTMENT TOTAL</b>	<b>495</b>	<b>422</b>	<b>408</b>	<b>416</b>	<b>420</b>	<b>324</b>
<b>MARKETING</b>						
Advertising Transfer	14	17	22	29	22	31
Advertising	125	146	172	196	179	138
Public Relations	64	60	57	71	86	55
Public Relations Transfer	9	13	8	9	14	14
Marketing 4-Yr	248	205	221	238	278	258
Marketing Transfer	18	14	24	19	16	20
Marketing Retail	47	59	50	42	37	30
Marketing Retail Transfer	5	12	7	7	3	2
Marketing Sales	115	106	101	107	89	99
Marketing Sales Transfer	34	29	23	12	20	31
Retail Fashion Merchandising	109	102	84	86	68	42
Visual Communications*	168	134	150	134	142	115
Marketing PGM 4-Yr	291	310	328	354	371	384
Food Service	174	174	185	187	171	143
Hospitality Mgt Transfer	34	45	43	59	78	77
Marketing PTM 4-Yr	54	62	59	69	86	89
Visual Communciations 4-Yr	0	4	21	16	8	20
<b>DEPARTMENT TOTAL</b>	<b>1,509</b>	<b>1,492</b>	<b>1,555</b>	<b>1,635</b>	<b>1,668</b>	<b>1,548</b>
<b>OFFICE ADMINISTRATION</b>						
Court Reporting	62	63	79	58	61	40
Executive Secretary	55	46	39	37	25	16
Legal Secretary	25	23	20	26	26	13
Administrative Services	39	41	31	9	3	0
Admin Services Transfer	8	8	6	1	0	0
Administrative Assistant	54	54	43	31	43	47
Office Automation Systems	0	0	0	15	18	17
Office Auto Systems Transfer	0	0	0	2	3	12
<b>DEPARTMENT TOTAL</b>	<b>243</b>	<b>235</b>	<b>218</b>	<b>179</b>	<b>179</b>	<b>145</b>
<b>ON-CAMPUS TOTAL</b>	<b>4,102</b>	<b>4,028</b>	<b>4,050</b>	<b>4,103</b>	<b>4,117</b>	<b>3,595</b>
<b>OFF-CAMPUS TOTAL</b>	<b>121</b>	<b>202</b>	<b>248</b>	<b>233</b>	<b>267</b>	<b>269</b>
<b>COLLEGE TOTAL</b>	<b>4,223</b>	<b>4,230</b>	<b>4,298</b>	<b>4,336</b>	<b>4,384</b>	<b>3,864</b>

\*Program was Commercial Art in 1987



STUDENTS/ENROLLMENT

ENROLLMENT BY PROGRAM  
FALL TERM

COLLEGE	1987/88	1988/89	1989/90	1990/91	1991/92	1992/93
<b>EDUCATION</b>						
<b>TEACHER EDUCATION</b>						
Master Occupational Educ	27	19	18	16	18	20
Math Education	46	56	59	60	64	59
Biology Education	0	0	0	0	0	37
Chemistry Education	0	0	0	0	0	5
Science Education	44	60	62	62	51	14
Technical Education	40	47	34	35	36	34
Allied Health Education	16	8	4	10	10	8
Business Education	102	105	102	94	72	58
Business Educ Office Admin	0	0	0	0	0	1
Bus Educ General Business	0	0	0	0	0	12
Wage Earning Home Econ	0	1	4	2	4	8
Training-Business & Ind	0	4	1	3	7	5
Certification	2	4	3	10	8	4
Master Occ Ed Provisional	18	14	10	6	5	5
CM School Educ	5	2	1	0	0	0
Pre-Teaching Elementary	0	0	0	0	85	87
Pre-Teaching Secondary	0	0	0	0	62	68
<b>Total</b>	<b>300</b>	<b>320</b>	<b>298</b>	<b>298</b>	<b>422</b>	<b>425</b>
<b>OFF-CAMPUS</b>						
Master Occupational Educ	12	11	12	18	7	19
Math Education	2	2	4	2	4	1
Science Education	1	4	1	0	2	3
Technical Education	24	29	22	26	17	26
Allied Health Education	14	22	9	15	13	12
Business Education	10	22	13	12	13	9
Wage Earning Home Econ	2	4	6	5	3	1
Training-Business & Ind	0	0	1	0	0	1
Certification	21	21	10	9	11	10
Master Occ Ed Provisional	2	9	7	11	1	5
Undeclared	0	26	10	17	41	32
<b>Off-Campus Total</b>	<b>88</b>	<b>150</b>	<b>95</b>	<b>115</b>	<b>112</b>	<b>119</b>
<b>DEPARTMENT TOTAL</b>	<b>388</b>	<b>470</b>	<b>393</b>	<b>413</b>	<b>534</b>	<b>544</b>
<b>TELEVISION PRODUCTION</b>						
Audiovisual Production 2-Yr	89	105	98	42	12	2
Television Production	81	76	83	141	137	113
<b>DEPARTMENT TOTAL</b>	<b>170</b>	<b>181</b>	<b>181</b>	<b>183</b>	<b>149</b>	<b>115</b>
<b>LEISURE STUDIES</b>						
Recreation Leadership Mgt	69	83	80	100	113	94
<b>DEPARTMENT TOTAL</b>	<b>69</b>	<b>83</b>	<b>80</b>	<b>100</b>	<b>113</b>	<b>94</b>
<b>CHILD DEVELOPMENT</b>						
Child Development*	0	75	57	97	77	89
<b>DEPARTMENT TOTAL</b>	<b>0</b>	<b>75</b>	<b>57</b>	<b>97</b>	<b>77</b>	<b>89</b>
<b>CRIMINAL JUSTICE</b>						
Criminal Justice	516	566	544	596	672	498
Pre-Criminal Justice	0	0	0	0	0	309
Criminal Justice Specialist	0	0	0	0	2	2
<b>DEPARTMENT TOTAL</b>	<b>516</b>	<b>566</b>	<b>544</b>	<b>596</b>	<b>674</b>	<b>809</b>
<b>ON-CAMPUS TOTAL</b>	<b>1,055</b>	<b>1,225</b>	<b>1,160</b>	<b>1,274</b>	<b>1,435</b>	<b>1,532</b>
<b>OFF-CAMPUS TOTAL</b>	<b>88</b>	<b>150</b>	<b>95</b>	<b>115</b>	<b>112</b>	<b>119</b>
<b>COLLEGE TOTAL</b>	<b>1,143</b>	<b>1,375</b>	<b>1,255</b>	<b>1,389</b>	<b>1,547</b>	<b>1,651</b>

\*Child Development was in College of Arts & Sciences prior to 1988

# STUDENTS/ENROLLMENT

## ENROLLMENT BY PROGRAM FALL TERM

COLLEGE	1987/88	1988/89	1989/90	1990/91	1991/92	1992/93
<b>OPTOMETRY</b>						
<b>PROFESSIONAL</b>						
O.D. Optometry	131	128	125	124	121	123
<b>DEPARTMENT TOTAL</b>	131	128	125	124	121	123
<b>TECHNICAL</b>						
Optometric Tech	26	28	25	21	23	19
Opticianry*	51	47	30	24	30	45
Undeclared	0	0	117	0	0	0
<b>DEPARTMENT TOTAL</b>	77	75	172	45	53	64
<b>COLLEGE TOTAL</b>	208	203	297	169	174	187

\*Was Ophthalmic Disp in 87/88

COLLEGE	1987/88	1988/89	1989/90	1990/91	1991/92	1992/93
<b>PHARMACY</b>						
<b>BS PHARMACY</b>						
BS Pharmacy	385	385	380	384	408	416
<b>DEPARTMENT TOTAL</b>	385	385	380	384	408	416
<b>PHARMACY D</b>						
Pharm D Add ON	0	0	0	6	12	4
Pharm D Track IN	0	0	0	0	0	7
Pharmacy D	0	0	0	0	0	11
<b>DEPARTMENT TOTAL</b>	0	0	0	6	12	22
<b>COLLEGE TOTAL</b>	385	385	380	390	420	438

**ENROLLMENT BY PROGRAM  
FALL TERM**

COLLEGE	1987/88	1988/89	1989/90	1990/91	1991/92	1992/93
<b>TECHNOLOGY</b>						
<b>AUTOMOTIVE</b>						
Auto Body	57	53	42	55	59	62
Auto & Heavy Equip Mgt	151	155	137	121	141	144
Auto Machine	37	46	35	32	34	21
Auto Service	230	230	204	175	173	150
Heavy Equip Service	91	103	92	81	76	83
Heavy Duty Engine	19	10	12	9	10	4
<b>Total</b>	<b>585</b>	<b>597</b>	<b>522</b>	<b>473</b>	<b>493</b>	<b>464</b>
<b>OFF-CAMPUS</b>						
Auto H/E Mfg	0	0	0	6	12	3
<b>Off-Campus Total</b>	<b>0</b>	<b>0</b>	<b>0</b>	<b>6</b>	<b>12</b>	<b>3</b>
<b>DEPARTMENT TOTAL</b>	<b>585</b>	<b>597</b>	<b>522</b>	<b>479</b>	<b>505</b>	<b>467</b>
<b>CONSTRUCTION</b>						
Building Construction	96	100	96	105	111	116
Architectural Tech	140	151	164	171	184	147
Construction Eng Tech	27	25	30	30	41	31
Surveying Tech	12	11	9	14	16	28
Aerial Mapping	11	17	13	4	2	0
Heat Refr Air Cond	106	132	108	99	96	87
Survey Engineering	48	64	60	70	71	69
Construction Mgt	52	47	37	46	52	41
HVACR Engineering*	16	23	29	34	39	38
Facilities Management	0	0	13	22	18	29
<b>Total</b>	<b>508</b>	<b>570</b>	<b>559</b>	<b>595</b>	<b>630</b>	<b>586</b>
<b>OFF-CAMPUS</b>						
Construction Mgt	0	0	0	7	10	13
HVACR Engineering	0	0	0	0	8	20
Surveying 4-Yr	17	0	0	0	0	0
<b>Off-Campus Total</b>	<b>17</b>	<b>0</b>	<b>0</b>	<b>7</b>	<b>18</b>	<b>33</b>
<b>DEPARTMENT TOTAL</b>	<b>525</b>	<b>570</b>	<b>559</b>	<b>602</b>	<b>648</b>	<b>619</b>
<b>ELECTRICAL</b>						
Industrial Electronics	167	139	137	105	94	95
Elec/E'tronics Eng Tech	56	52	54	49	56	56
Avionics	17	1	3	1	0	0
Electrical Power	8	9	0	0	0	0
<b>Total</b>	<b>248</b>	<b>201</b>	<b>194</b>	<b>155</b>	<b>150</b>	<b>151</b>
<b>OFF-CAMPUS</b>						
Industrial Electronics	0	0	0	0	9	15
<b>Off-Campus Total</b>	<b>0</b>	<b>0</b>	<b>0</b>	<b>0</b>	<b>9</b>	<b>15</b>
<b>DEPARTMENT TOTAL</b>	<b>248</b>	<b>201</b>	<b>194</b>	<b>155</b>	<b>159</b>	<b>166</b>

## STUDENTS/ENROLLMENT

COLLEGE	1987/88	1988/89	1989/90	1990/91	1991/92	1992/93
<b>TECHNOLOGY</b>						
<b>PRINTING</b>						
Printing	165	182	163	155	150	124
BS Printing	49	39	51	47	48	36
<b>DEPARTMENT TOTAL</b>	<b>214</b>	<b>221</b>	<b>214</b>	<b>202</b>	<b>198</b>	<b>160</b>
<b>MANUFACTURING ENG</b>						
Mechanical Engineering	51	54	56	57	59	66
Manufacturing Tool**	92	76	64	67	67	62
Manufacturing Eng	65	48	47	48	47	56
Technical Drafting	109	100	90	108	99	104
Plastics 2-Yr	170	166	168	184	202	189
Technical Illustration	62	47	51	51	50	29
Plastics 4-Yr	44	62	84	88	85	91
Welding 2-Yr	74	66	61	61	68	66
Welding 4-Yr	22	26	29	31	24	30
Product Design Eng	0	14	35	40	53	57
Computer Numerical Ctrl	6	1	0	0	0	0
<b>Total</b>	<b>695</b>	<b>660</b>	<b>685</b>	<b>735</b>	<b>754</b>	<b>750</b>
<b>OFF-CAMPUS TOTAL</b>						
Product Design Eng	0	0	0	0	0	14
Manufacturing Eng	16	20	24	36	38	38
Manufacturing Tech	8	14	6	2	2	4
<b>Off-Campus Total</b>	<b>24</b>	<b>34</b>	<b>30</b>	<b>38</b>	<b>40</b>	<b>56</b>
<b>DEPARTMENT TOTAL</b>	<b>719</b>	<b>694</b>	<b>715</b>	<b>773</b>	<b>794</b>	<b>806</b>
<b>UNDECLARED</b>	<b>0</b>	<b>15</b>	<b>5</b>	<b>30</b>	<b>31</b>	<b>62</b>
<b>ON-CAMPUS TOTAL</b>	<b>2,250</b>	<b>2,264</b>	<b>2,179</b>	<b>2,190</b>	<b>2,256</b>	<b>2,173</b>
<b>OFF-CAMPUS TOTAL</b>	<b>41</b>	<b>34</b>	<b>30</b>	<b>51</b>	<b>79</b>	<b>107</b>
<b>COLLEGE TOTAL</b>	<b>2,291</b>	<b>2,298</b>	<b>2,209</b>	<b>2,241</b>	<b>2,335</b>	<b>2,280</b>

\*Program was Energy Management in 1989

\*\*Program was Machine Tool in 1989

Source: ENRL2406, Student Profile Enrollment Summary

---

# Degrees

---

**DEGREES CONFERRED BY PROGRAM  
ACADEMIC YEAR (SUMMER QUARTER – SPRING QUARTER)**

	1988-89			1989-90			1990-01			1991-92		
	AS	BS	MS	AS	BS	MS	AS	BS	MS	AS	BS	MS
<b>ALLIED HEALTH SCI</b>												
<b>DENTAL</b>												
Dental Assisting	12			3			6			7		
Dental Hygiene	56			48			53			49		
Dental Technician	<u>20</u>			<u>16</u>			<u>14</u>			<u>14</u>		
<b>TOTAL</b>	<b>88</b>			<b>67</b>			<b>73</b>			<b>70</b>		
<b>HEALTH SYSTEMS MGMT</b>												
Environmental Health Tech		3			1			3				
Ind & Env Health Mgmt		17			26			37			29	
Occupational Safety/Health		1										
Health System Mgmt		<u>20</u>			<u>20</u>			<u>27</u>			<u>23</u>	
<b>TOTAL</b>		<b>41</b>			<b>47</b>			<b>67</b>			<b>52</b>	
<b>HOSPITAL RELATED</b>												
Medical Lab Tech	10			9			6			14		
Medical Record Tech	18			48			31			35		
Nuclear Med Tech	11			17			17			14	1	
Radiography	39			42			35			46		
Respiratory Care	6			6			8			13		
Medical Records Adm		23			29			26			25	
Medical Tech		17			9			13			20	
Nuclear Medicine		<u>6</u>			<u>10</u>			<u>12</u>			<u>10</u>	
<b>TOTAL</b>	<b>84</b>	<b>40</b>		<b>122</b>	<b>48</b>		<b>97</b>	<b>51</b>		<b>122</b>	<b>56</b>	
<b>NURSING</b>												
Nursing	<u>17</u>	<u>53</u>		<u>13</u>	<u>75</u>		<u>14</u>	<u>32</u>		<u>34</u>	<u>47</u>	
<b>TOTAL</b>	<b>17</b>	<b>53</b>		<b>13</b>	<b>75</b>		<b>14</b>	<b>32</b>		<b>34</b>	<b>47</b>	
<b>EXTERNAL DEGREE</b>												
External Deg Env Hlth												
Ext Deg Env Sys Mgmt												
<b>TOTAL</b>												
<b>COLLEGE TOTAL</b>	<b>189</b>	<b>141</b>		<b>202</b>	<b>170</b>		<b>184</b>	<b>150</b>		<b>226</b>	<b>155</b>	

# DEGREES

## DEGREES CONFERRED BY PROGRAM ACADEMIC YEAR (SUMMER QUARTER – SPRING QUARTER)

	1988-89			1989-90			1990-91			1991-92		
	AS	BS	MS	AS	BS	MS	AS	BS	MS	AS	BS	MS
<b>ARTS &amp; SCIENCES</b>												
<b>BIOLOGY</b>												
Ornamental Horticulture	13			10			7			14		
Applied Biology		28			32			25			33	
Biotechnology					3			3			1	
<b>TOTAL</b>	<b>13</b>	<b>28</b>		<b>10</b>	<b>35</b>		<b>7</b>	<b>28</b>		<b>14</b>	<b>34</b>	
<b>PHYSICAL SCIENCES</b>												
Industrial Chem Tech	11			19			14			16		
<b>TOTAL</b>	<b>11</b>			<b>19</b>			<b>14</b>			<b>16</b>		
<b>MATHEMATICS</b>												
Applied Math		6			3			3			7	
<b>TOTAL</b>		<b>6</b>			<b>3</b>			<b>3</b>			<b>7</b>	
<b>LANG &amp; LIT</b>												
Journalism	14			16			10			12		
Technical Communication		4			5			4			4	
<b>TOTAL</b>	<b>14</b>	<b>4</b>		<b>16</b>	<b>5</b>		<b>10</b>	<b>4</b>		<b>12</b>	<b>4</b>	
<b>SOCIAL SCIENCES</b>												
Social Services								1			2	
Social Work		49			54			57			58	
<b>TOTAL</b>		<b>49</b>			<b>54</b>			<b>58</b>			<b>60</b>	

	1988-89			1989-90			1990-91			1991-92		
	AS	BS	MS	AS	BS	MS	AS	BS	MS	AS	BS	MS
<b>ARTS &amp; SCIENCES</b>												
<b>GENERAL STUDIES</b>												
Pre-Arts	39			43			51			51		
Pre-Dentistry				1			2			1		
Pre-Engineering	2			4			4			1		
Pre-Law	3			12			6			8		
Pre-Medicine				1			4			1		
Pre-Mort Science	1			1			4			1		
Pre-Optometry	7			13			7			13		
Pre-Pharmacy	25			30			29			31		
Pre-Science	6			13			5			10		
Pre-Teach (Elementary)*	16			17			10			1		
Pre-Teach (Secondary)*	5			5			10					
Pre-Veterinary				2						1		
General Studies	5			6			4			10		
<b>TOTAL</b>	<b>109</b>			<b>148</b>			<b>136</b>			<b>129</b>		
<b>COLLEGE TOTAL</b>	<b>147</b>	<b>87</b>		<b>193</b>	<b>97</b>		<b>167</b>	<b>93</b>		<b>171</b>	<b>105</b>	

\*Pre-Teach Elementary & Secondary moved to College of Education in Fall, 1991



# DEGREES

## DEGREES CONFERRED BY PROGRAM ACADEMIC YEAR (SUMMER QUARTER – SPRING QUARTER)

	1988-89			1989-90			1990-91			1991-92		
	AS	BS	MS	AS	BS	MS	AS	BS	MS	AS	BS	MS
<b>BUSINESS</b>												
<b>ACCOUNTANCY</b>												
Accountancy		87			69			71			65	
Accountancy/Masters			5			2			5			5
<b>TOTAL</b>		<b>87</b>	<b>5</b>		<b>69</b>	<b>2</b>		<b>71</b>	<b>5</b>		<b>65</b>	<b>5</b>
<b>COMPUTER INFO SYS</b>												
Computer Info Systems		103			67			54			73	
CIS Management						1			3			5
<b>TOTAL</b>		<b>103</b>	<b>1</b>		<b>67</b>	<b>1</b>		<b>54</b>	<b>3</b>		<b>73</b>	<b>5</b>
<b>MANAGEMENT</b>												
Legal Assistant	23			18			20			25		
Real Estate	21			14			16			8		
Business Administration		165			201			204			210	
Business Economics		3			6			2			3	
Finance		31			22			28			31	
Insurance		12			18			20			19	
Insurance/Real Estate		3			3			5			7	
International Business		14			8			9			9	
Management		57			69			55			62	
Personnel Mgt/Ind Rel		18			20			16			15	
Production Management		17			30			25			17	
Quantitative Business		3			2			3			3	
Small Business Mgt		11			19			13			12	
<b>TOTAL</b>	<b>44</b>	<b>334</b>		<b>32</b>	<b>398</b>		<b>36</b>	<b>380</b>		<b>33</b>	<b>388</b>	
Real Estate (Certificate)	1			5			7			11		

	1988-89			1989-90			1990-91			1991-92		
	AS	BS	MS	AS	BS	MS	AS	BS	MS	AS	BS	MS
<b>BUSINESS</b>												
<b>MARKETING</b>												
Advertising		22			46			54			60	
Advertising/Public Relation:		9			7							
Visual Communication	1			1						1		
Food Service Mgt	36			48			56			50		
Hospitality Management		18			23			26			40	
Marketing		46			49			44			64	
Marketing/PGM		49			61			66			55	
Marketing/PTM		8			12			4			9	
Marketing/Retail		19			20			23			18	
Mktg/Ret Fash Merch	19			21			24			16		
Marketing/Sales		45			57			53			51	
Public Relations								12			7	
Visual Communication	<u>26</u>	<u>    </u>		<u>18</u>	<u>11</u>		<u>20</u>	<u>17</u>		<u>36</u>	<u>4</u>	
<b>TOTAL</b>	<b>82</b>	<b>216</b>		<b>88</b>	<b>286</b>		<b>100</b>	<b>299</b>		<b>103</b>	<b>308</b>	
<b>OFFICE ADMIN</b>												
Court/Freelance Reporting	6			16			13			15		
Office Adm/Adm Assistant	18			25			14			15		
Off Adm/Exec Secretary	11			7			6			10		
Off Adm/Legal Secretary	8			6			4			3		
Office Administration	<u>    </u>	<u>17</u>		<u>    </u>	<u>9</u>		<u>    </u>	<u>    </u>		<u>    </u>	<u>    </u>	
<b>TOTAL</b>	<b>43</b>	<b>17</b>		<b>54</b>	<b>9</b>		<b>37</b>	<b>    </b>		<b>43</b>	<b>    </b>	
Office Automated Systems Accelerated Program					2			9			3	
Diversified Business	<u>15</u>	<u>    </u>		<u>22</u>	<u>    </u>		<u>26</u>	<u>    </u>		<u>27</u>	<u>    </u>	
<b>TOTAL</b>	<b>15</b>	<b>    </b>		<b>22</b>	<b>2</b>		<b>26</b>	<b>9</b>		<b>27</b>	<b>3</b>	
<b>COLLEGE TOTAL</b>	<b>184</b>	<b>757</b>	<b>6</b>	<b>196</b>	<b>831</b>	<b>3</b>	<b>199</b>	<b>813</b>	<b>8</b>	<b>206</b>	<b>837</b>	<b>10</b>
<b>CERTIFICATES</b>												
Real Estate	1			5			7			11		

DEGREES

**DEGREES CONFERRED BY PROGRAM**  
**ACADEMIC YEAR (SUMMER QUARTER – SPRING QUARTER)**

	1988-89			1989-90			1990-91			1991-92			
	AS	BS	MS	AS	BS	MS	AS	BS	MS	AS	BS	MS	
<b>EDUCATION</b>													
<b>TEACHER EDUCATION</b>													
Pre-Teach Elementary*											6		
Pre-Teach Secondary*											3		
Allied Health Education		18			10			10				9	
Business Education		18			26			25				18	
Comm School Education					1								
Mathematics Education		4			5			5				7	
Science Education		6			16			15				10	
Technical Education		18			26			23				30	
Training Bus & Industry		1			1							2	
Wage Earn Home Econ					4			1				3	
Occupational Education			26			24			23			26	
<b>TOTAL</b>		<b>65</b>	<b>26</b>		<b>89</b>	<b>24</b>		<b>79</b>	<b>23</b>		<b>9</b>	<b>79</b>	<b>26</b>
<b>TELEVISION PROD</b>													
Audiovisual Production	22			24			23				12		
TV Production		26			28			37				33	
<b>TOTAL</b>	<b>22</b>	<b>26</b>		<b>24</b>	<b>28</b>		<b>23</b>	<b>37</b>		<b>12</b>		<b>33</b>	
<b>LEISURE STUDIES</b>													
Rec Leadership & Mgt		11			13			16				20	
<b>TOTAL</b>		<b>11</b>			<b>13</b>			<b>16</b>				<b>20</b>	
<b>CRIMINAL JUSTICE</b>													
Pre-Arts Criminal Justice*											8		
Criminal Justice		105			103			95				141	
<b>TOTAL</b>		<b>105</b>			<b>103</b>			<b>95</b>			<b>8</b>	<b>141</b>	
<b>CHILD DEVELOPMENT</b>													
Child Development	31			32			40				34		
<b>TOTAL</b>	<b>31</b>			<b>32</b>			<b>40</b>				<b>34</b>		
<b>COLLEGE TOTAL</b>	<b>53</b>	<b>207</b>	<b>26</b>	<b>56</b>	<b>233</b>	<b>24</b>	<b>63</b>	<b>227</b>	<b>23</b>	<b>63</b>	<b>273</b>	<b>26</b>	

\*Pre-Arts Criminal Justice

\*Pre-Teach Elementary & Secondary moved to College of Education in Fall, 1991

**DEGREES CONFERRED BY PROGRAM**  
**ACADEMIC YEAR (SUMMER QUARTER – SPRING QUARTER)**

	1988-89			1989-90			1990-91			1991-92		
	AS	BS	OD	AS	BS	OD	AS	BS	OD	AS	BS	OD
<b>OPTOMETRY</b>												
Vision Science		18			21			30			22	
Doctor Optometry			30			33			33			30
Optometric Tech	16			7			12			7		
Opticianry	16			18			9			1		
<b>COLLEGE TOTAL</b>	<b>32</b>	<b>18</b>	<b>30</b>	<b>25</b>	<b>21</b>	<b>33</b>	<b>21</b>	<b>30</b>	<b>33</b>	<b>8</b>	<b>22</b>	<b>30</b>

**DEGREES CONFERRED BY PROGRAM**  
**ACADEMIC YEAR (SUMMER QUARTER – SPRING QUARTER)**

	1988-89			1989-90			1990-91			1991-92		
	AS	BS	MS	AS	BS	MS	AS	BS	MS	AS	BS	Pharm D
<b>PHARMACY</b>												
Pharmacy		110			127			104			108	6
<b>COLLEGE TOTAL</b>		<b>110</b>			<b>127</b>			<b>104</b>			<b>108</b>	<b>6</b>

# DEGREES

## DEGREES CONFERRED BY PROGRAM ACADEMIC YEAR (SUMMER QUARTER – SPRING QUARTER)

	1988-89			1989-90			1990-01			1991-92		
	AS	BS	MS	AS	BS	MS	AS	BS	MS	AS	BS	MS
<b>TECHNOLOGY</b>												
<b>AUTOMOTIVE</b>												
Auto Machine Tech	17			12			8			17		
Auto Service Tech	66			64			64			74		
Automotive Body	24			15			23			24		
Heavy Duty Eng Tech	5			4			1			2		
Heavy Equipment Serv	34			35			26			30		
Auto & Heavy Equip Mgt	—	78		—	59		—	53		—	56	
<b>TOTAL</b>	<b>146</b>	<b>78</b>		<b>130</b>	<b>59</b>		<b>122</b>	<b>53</b>		<b>147</b>	<b>56</b>	
Auto Mach Tech (Cert)	1									1		
<b>CONSTRUCTION</b>												
Aerial Mapping Tech	4			4			2			1		
Architectural Tech	29			27			45			36		
Building Const Tech	21			34			26			35		
Construction Eng Tech	6			9			4			13		
Heating Refg & Air Cond	32			44			42			27		
Surveying Tech	6			4			1			3		
Facilities Management								7			11	
HVACR Eng Tech								16			13	
Construction Management		30			24			13			29	
Energy Management		11			11			1				
Surveying	—	10		—	15		—	12		—	22	
<b>TOTAL</b>	<b>98</b>	<b>51</b>		<b>122</b>	<b>50</b>		<b>120</b>	<b>49</b>		<b>115</b>	<b>75</b>	
<b>ELECT/ELECTRONICS</b>												
Avionics Tech	1			8			1					
Broadcast Elect Tech								1				
Electrical Power Tech												
Industrial Elect Tech	36			30			32			24		
Radio & TV Serv				2						1		
Electrical/Electronics Eng	—	28		—	21		—	20		—	20	
<b>TOTAL</b>	<b>37</b>	<b>28</b>		<b>40</b>	<b>21</b>		<b>33</b>	<b>21</b>		<b>25</b>	<b>20</b>	

	1988-89			1989-90			1990-01			1991-92		
	AS	BS	MS	AS	BS	MS	AS	BS	MS	AS	BS	MS
<b>TECHNOLOGY</b>												
<b>COMP AIDED DESIGN*</b>												
Cosmetology	1			1								
Mechanical Eng Tech	8											
Tech Drafting/Tool Design	28			6			2					
Tech Illustration	<u>16</u>			—			—					
<b>TOTAL</b>	<b>53</b>			<b>7</b>			<b>2</b>					
<b>GRAPHIC ARTS</b>												
Printing Tech	30			58			54			50		
Printing Management	—	<u>23</u>		—	<u>30</u>		—	<u>19</u>		—	<u>29</u>	
<b>TOTAL</b>	<b>30</b>	<b>23</b>		<b>58</b>	<b>30</b>		<b>54</b>	<b>19</b>		<b>50</b>	<b>29</b>	
Graphic Reproduction (Certificate)							1					
<b>INDUSTRIAL*</b>												
Comp Numerical Control	2			1			1					
Mach Tool Technology	23			25			1					
Plastics Technology	21			59			44			47		
Welding Technology	25			18			17			20		
Manufacturing Tech								2			4	
Mfg Tooling Tech							21			20		
Manufacturing Eng Tech		24			23			29			25	
Plastics Engineering Tech		25			36			42			52	
Product Design Eng Tech					14			14			19	
Welding Eng Technology		10			9			16			10	
Mech Eng Technology				15			8			6		
Tech Draft/Tool Design				1			32			37		
Technical Illustration				<u>29</u>			<u>18</u>			<u>15</u>		
<b>TOTAL</b>	<b>71</b>	<b>59</b>		<b>148</b>	<b>82</b>		<b>142</b>	<b>103</b>		<b>145</b>	<b>110</b>	
Mfg Tooling Tech (Certificate)							1					
Welding Tech (Certificate)										1		
<b>COLLEGE TOTAL</b>	<b>435</b>	<b>239</b>		<b>505</b>	<b>242</b>		<b>473</b>	<b>245</b>		<b>482</b>	<b>290</b>	<b>0</b>

\*(NOTE: Industrial and CAD were combined to create a new dept, Manufacturing Engineering Technology in 1990-91)

**CERTIFICATES**

Auto Machine Tech	1									1		
Graphic Reproduction							1					
Manufacturing Tooling Tech							1					
Welding Tech										1		

Source: REGR2456, Report for Year End

# DEGREES

---

## DEGREES CONFERRED AT FERRIS STATE UNIVERSITY

### ACADEMIC YEAR (SUMMER QUARTER – SPRING QUARTER)

	<b>CERTIFICATE</b>	<b>ASSOCIATE</b>	<b>BACHELOR</b>	<b>MASTERS</b>	<b>DOCTORATE</b>
1986-1987	5	1,119	1,514	15	30
1987-1988	3	1,040	1,521	20	35
1988-1989	2	1,040	1,559	32	30
1989-1990	6	1,177	1,721	27	33
1990-1991	9	1,107	1,662	31	33
1991-1992	13	1,156	1,790	36	36

Source: REGR 2456

---

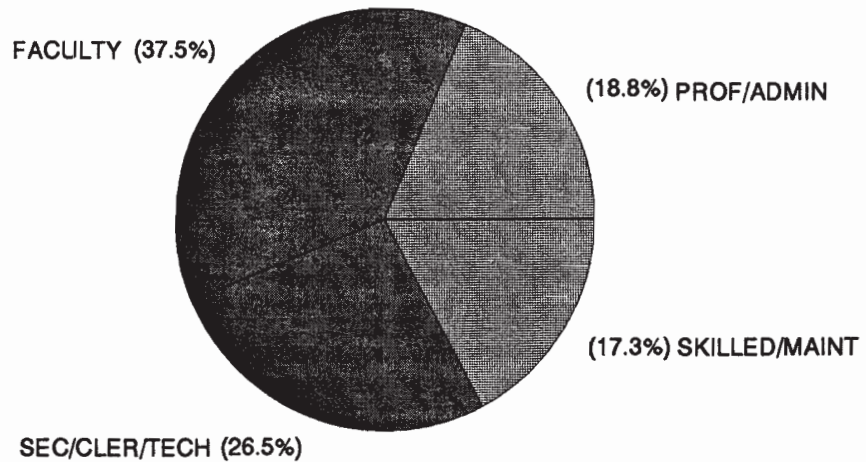
# **Faculty/Staff**

---



**FULL-TIME  
UNIVERSITY STAFF BY JOB CATEGORY AND SEX**

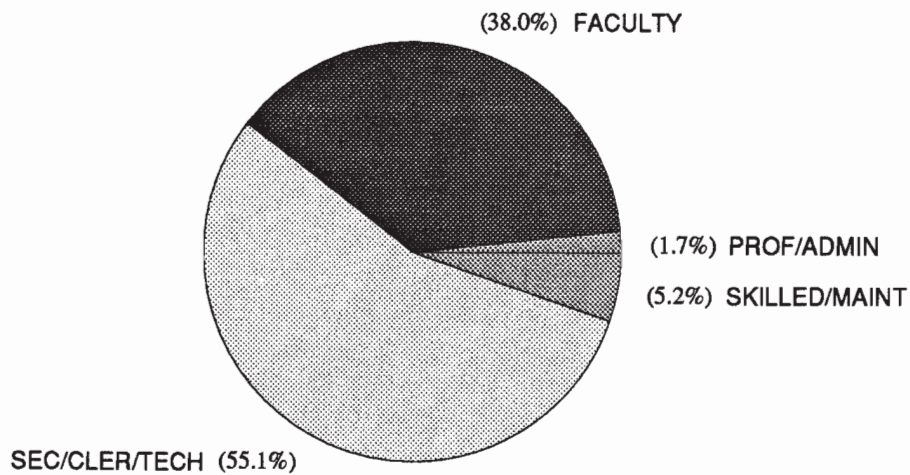
JOB CATEGORY	MALE		FEMALE		TOTAL	
	NUMBER	PERCENT	NUMBER	PERCENT	NUMBER	PERCENT
Professional/ Administrative	177	67.8%	84	32.2%	261	18.8%
Faculty	393	75.4%	128	24.6%	521	37.5%
Secretarial/ Clerical/Tech	65	17.7%	303	82.3%	368	26.5%
Skilled Craft/ Maintenance	139	57.9%	101	42.1%	240	17.3%
<b>TOTAL</b>	<b>774</b>	<b>55.7%</b>	<b>616</b>	<b>44.3%</b>	<b>1,390</b>	<b>100.0%</b>



# FACULTY/STAFF

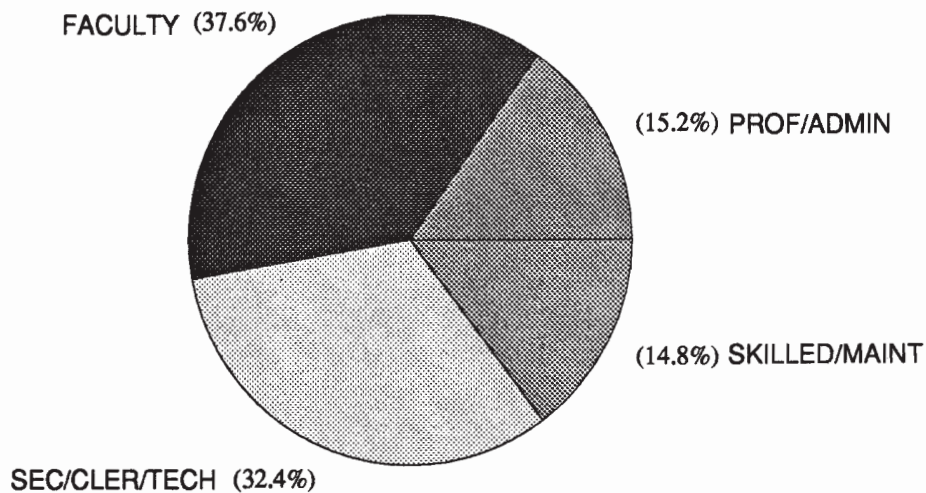
## PART-TIME UNIVERSITY STAFF BY JOB CATEGORY AND SEX

JOB CATEGORY	MALE		FEMALE		TOTAL	
	NUMBER	PERCENT	NUMBER	PERCENT	NUMBER	PERCENT
Professional/ Administrative	3	50.0%	3	50.0%	6	1.7%
Faculty	73	52.9%	65	47.1%	138	38.0%
Secretarial/ Clerical/Tech	47	23.5%	153	76.5%	200	55.1%
Skilled Craft/ Maintenance	12	63.2%	7	36.8%	19	5.2%
TOTAL	135	37.2%	228	62.8%	363	100.0%



**TOTAL  
UNIVERSITY STAFF BY JOB CATEGORY AND SEX**

JOB CATEGORY	MALE		FEMALE		TOTAL	
	NUMBER	PERCENT	NUMBER	PERCENT	NUMBER	PERCENT
Professional/ Administrative	180	67.4%	87	32.6%	267	15.2%
Faculty	466	70.7%	193	29.3%	659	37.6%
Secretarial/ Clerical/Tech	112	19.7%	456	80.3%	568	32.4%
Skilled Craft/ Maintenance	151	58.3%	108	41.7%	259	14.8%
<b>TOTAL</b>	<b>909</b>	<b>51.9%</b>	<b>844</b>	<b>48.1%</b>	<b>1,753</b>	<b>100.0%</b>



Source: Ferris State University FY-92, EEO-6 Report  
Dated 11/18/92

## FACULTY/STAFF

### FERRIS STATE UNIVERSITY DISTINGUISHED TEACHER AWARDS

The Ferris State University Academic Senate oversees the selection of the Distinguished Teacher Awards. Teachers receiving this award have been nominated by their peers based on the following criteria: teaching excellence; participation in professional development activities; interest in students outside the classroom/laboratory; and exhibiting distinction as a member of the college community.

YEAR	AWARD RECIPIENT	COLLEGE
1963	Ralph E. Patullo	Arts and Sciences
1964	June B. Carr	Arts and Sciences
1965	Marguerite Jeserich	Arts and Sciences
1966	George Wells	Arts and Sciences
1967	Garnet Zimmerman	Technology
1968	Karlis Kazerovskis	Pharmacy
1969	Frank Karas	Arts and Sciences
1970	Robert K. Harry	Arts and Sciences
1971	Kenneth O. McManis	Arts and Sciences
1972	George N. Holcomb	Pharmacy
1973	Richard Hunter	Allied Health
1974	Roger F. Kennedy	Technology
1975	Everett J. Nienhouse	Arts and Sciences
1976	Barbara Sengelaub	Allied Health
1977	Max T. Yeley	Technology
1978	Richard L. Shaw	Technology
1979	Joseph J. Mitala	Pharmacy
1980	Sidney P. Sytsma	Business
1981	Richard A. Santer	Arts and Sciences
1982	Michael D. Eils	Allied Health
1982	Neill H. Nutter	Arts and Sciences
1983	Herbert L. Carson	Arts and Sciences
1984	Robert E. Friar	Arts and Sciences
1984	Newell H. Johnson	Technology
1985	Julia H. Bonkowski	Allied Health
1985	James P. Lehnert	Arts and Sciences
1986	Ada Lou Carson	Arts and Sciences
1987	Michael C. Cooper	Business
1987	Rose Ann Swartz	Business
1988	Robert C. Ferguson	Arts and Sciences
1988	Garth S. McHattie	Education
1989	Mark A. Curtis	Technology
1989	James D. Maas	Business
1990	Dr. Marilyn Keigley	Business
1990	Christine Towner	Allied Health
1991	Dr. Roxanne M. Cullen	Arts & Sciences
1991	Gary C. Horn	Arts & Sciences
1992	Bruce L. Beetley	Arts & Sciences
1992	John H. Landis	Allied Health Sciences

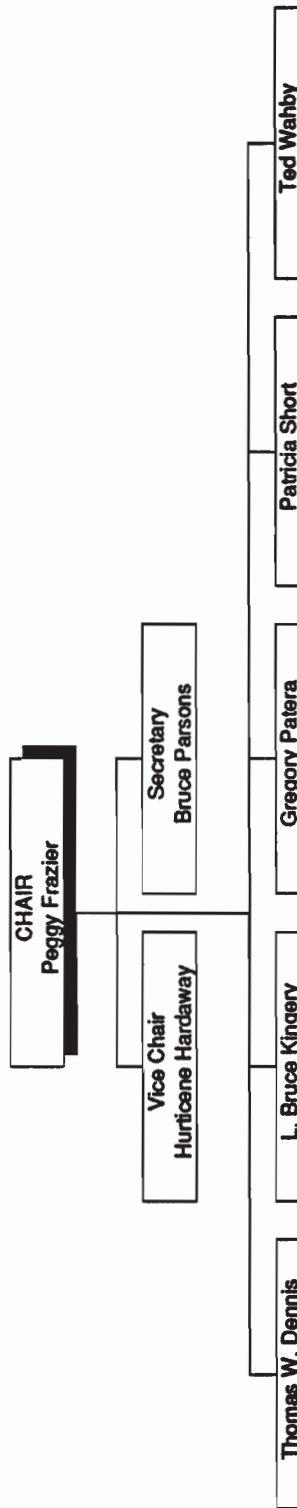
Source: Board of Control

---

# **Organizational Charts**

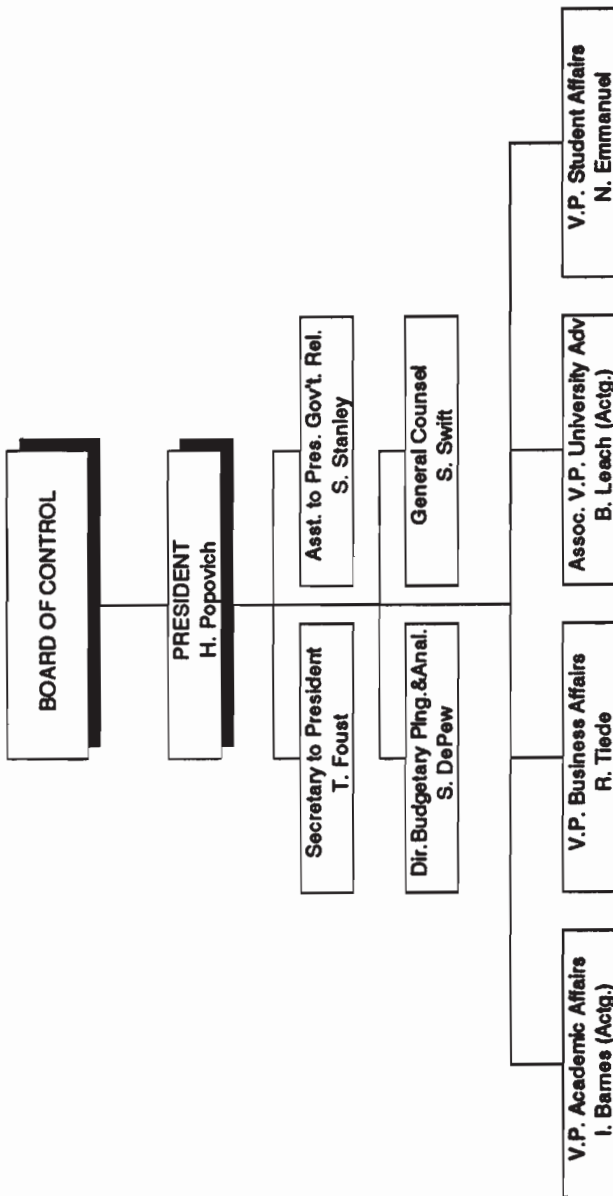
---

**FERRIS STATE UNIVERSITY  
BOARD OF CONTROL**

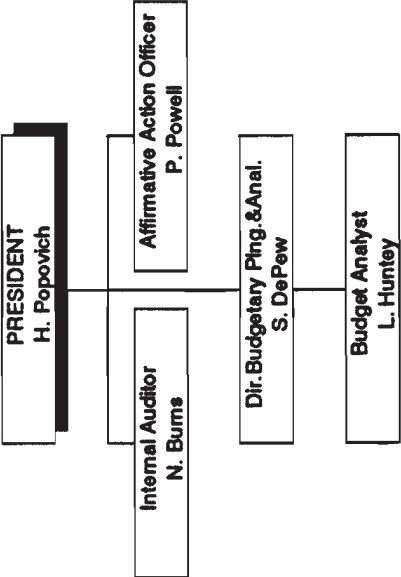


# ORGANIZATIONAL CHARTS

## FERRIS STATE UNIVERSITY BOARD OF CONTROL/PRESIDENT



FERRIS STATE UNIVERSITY  
PRESIDENT

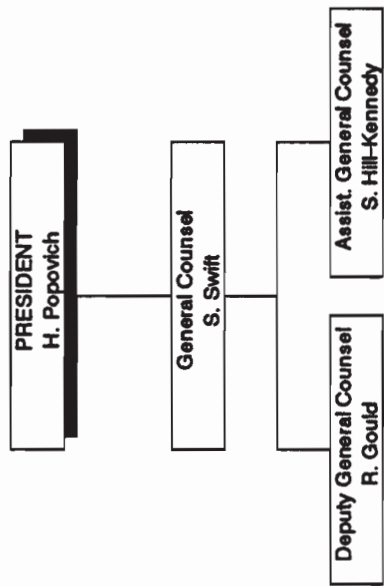




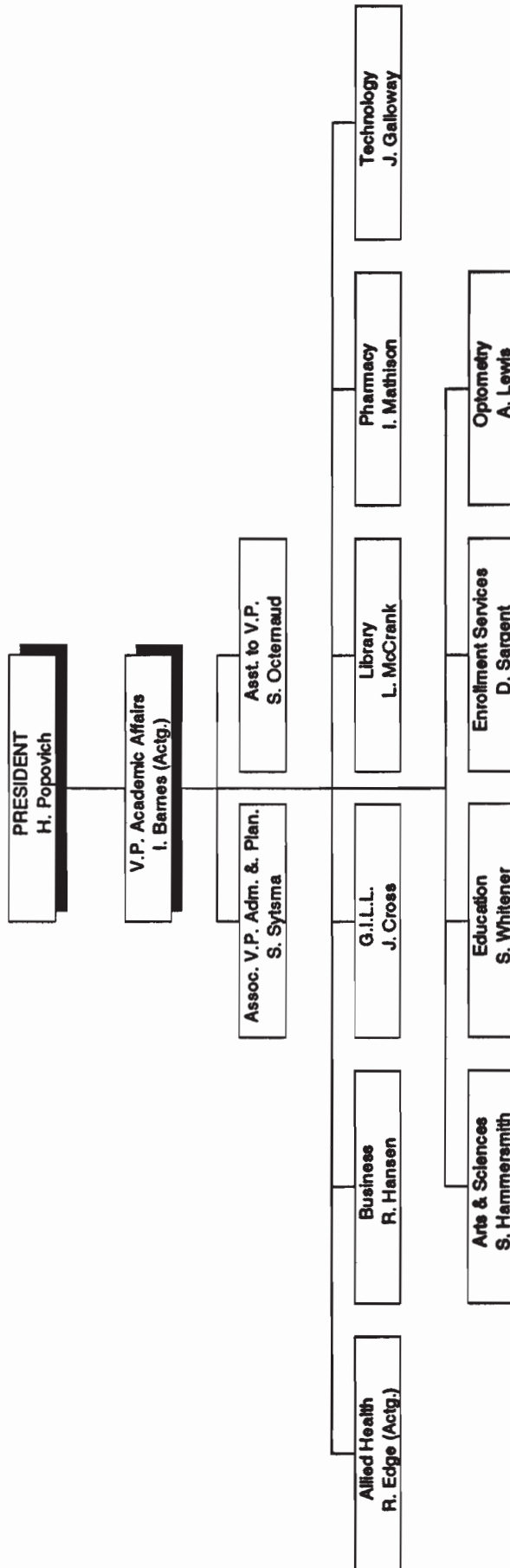
# ORGANIZATIONAL CHARTS

---

## FERRIS STATE UNIVERSITY OFFICE OF LEGAL AFFAIRS



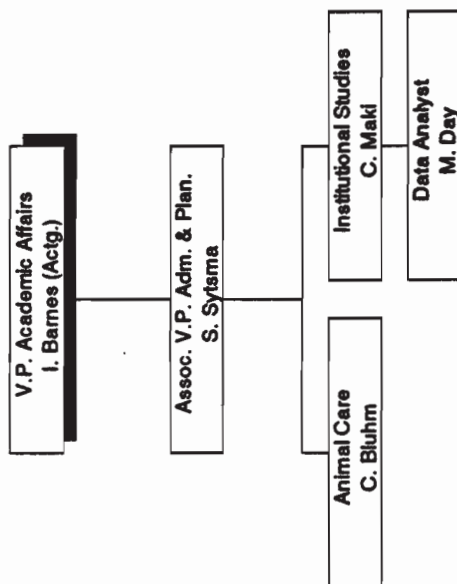
FERRIS STATE UNIVERSITY  
ACADEMIC AFFAIRS DIVISION



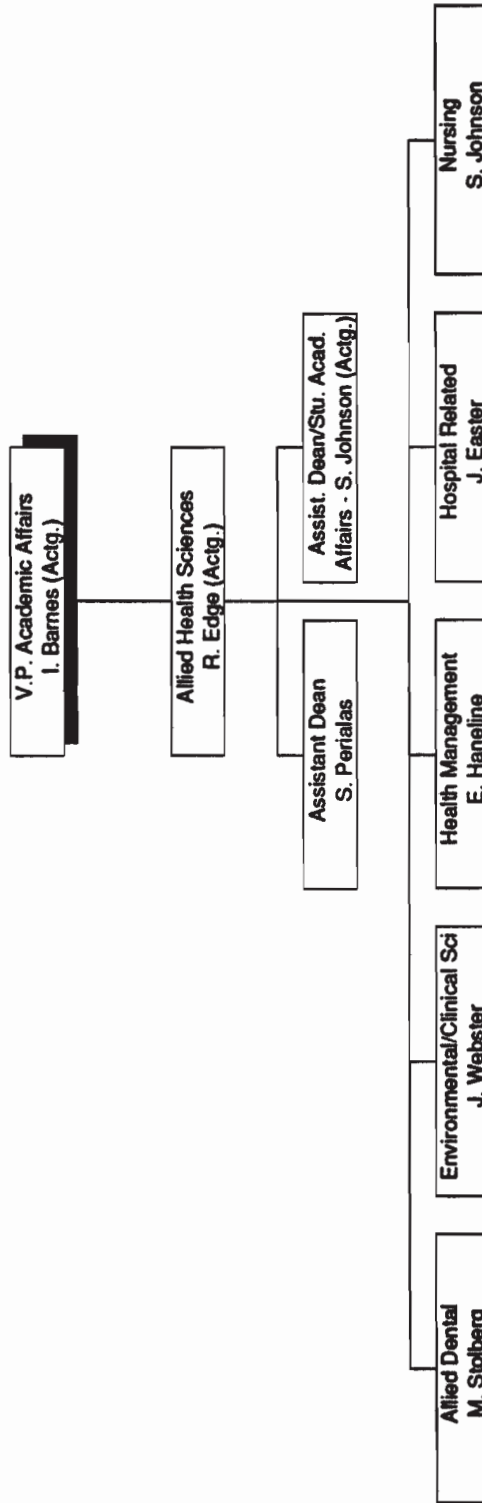
# ORGANIZATIONAL CHARTS

---

## FERRIS STATE UNIVERSITY OFFICE OF ACADEMIC AFFAIRS

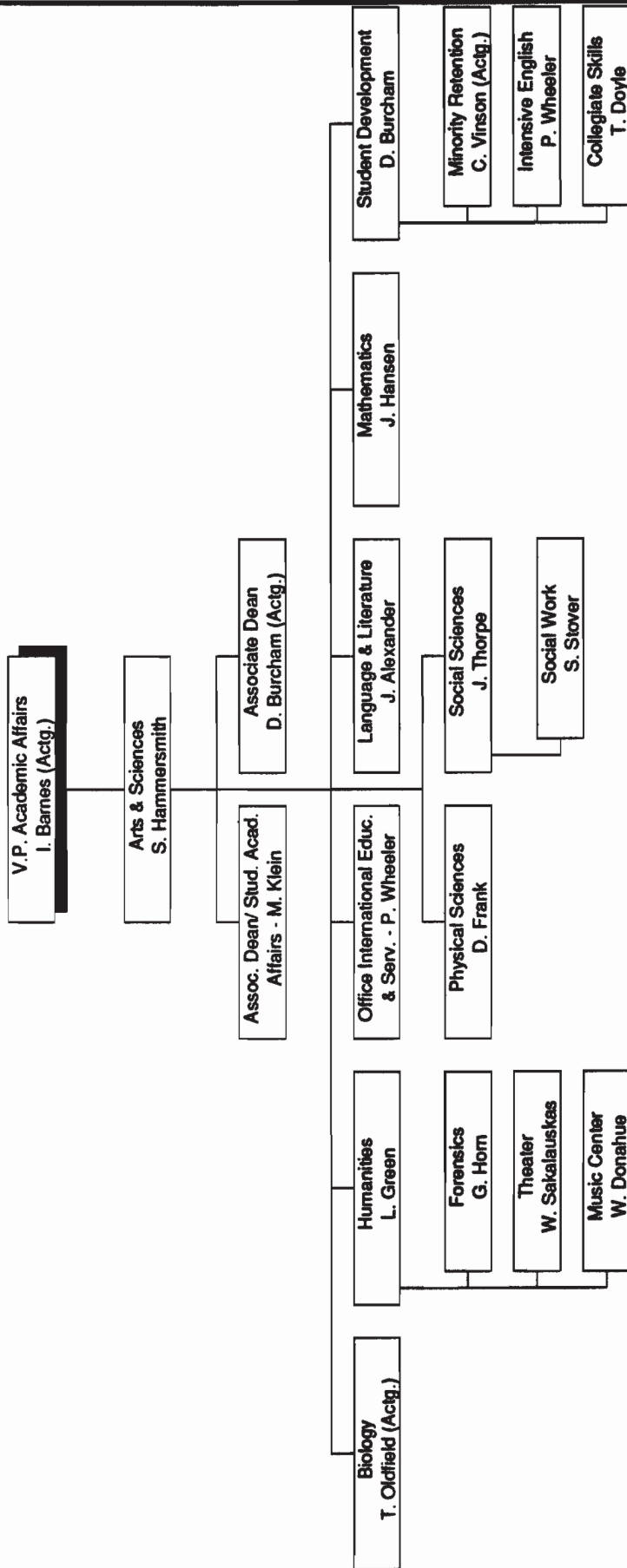


**FERRIS STATE UNIVERSITY**  
**ACADEMIC AFFAIRS DIVISION**  
**COLLEGE OF ALLIED HEALTH SCIENCES**

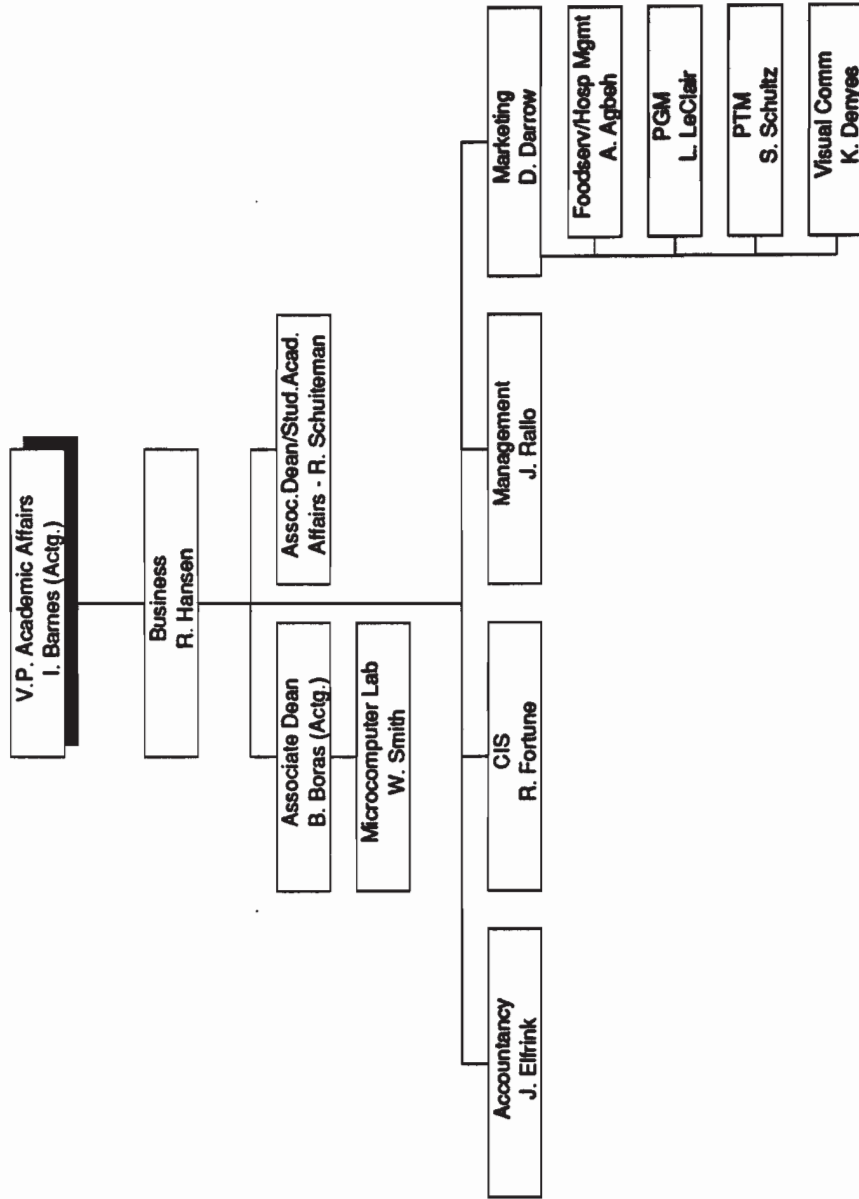


# ORGANIZATIONAL CHARTS

## FERRIS STATE UNIVERSITY ACADEMIC AFFAIRS DIVISION COLLEGE OF ARTS & SCIENCES

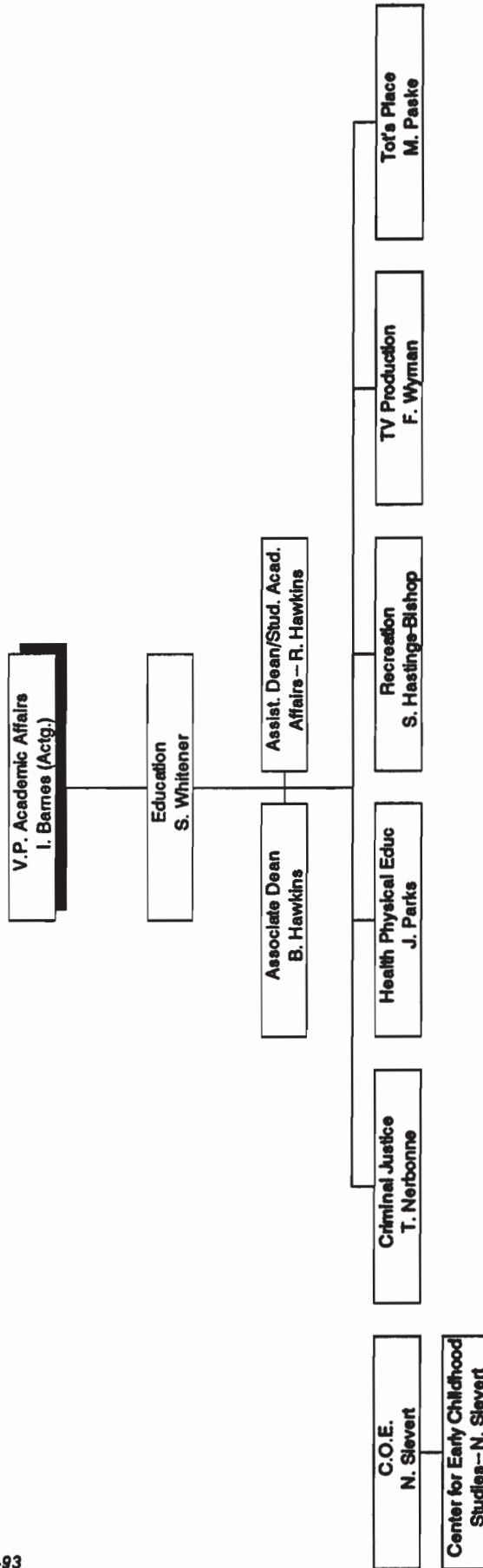


**FERRIS STATE UNIVERSITY**  
**ACADEMIC AFFAIRS DIVISION**  
**COLLEGE OF BUSINESS**

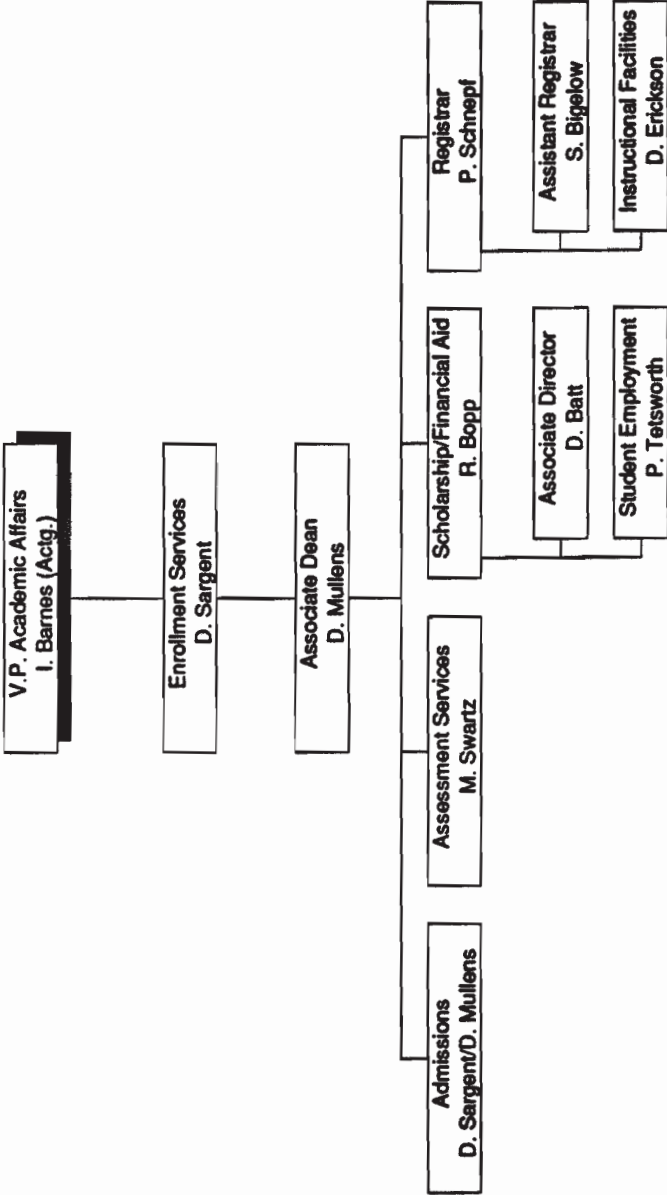


ORGANIZATIONAL CHARTS

FERRIS STATE UNIVERSITY  
ACADEMIC AFFAIRS DIVISION  
COLLEGE OF EDUCATION



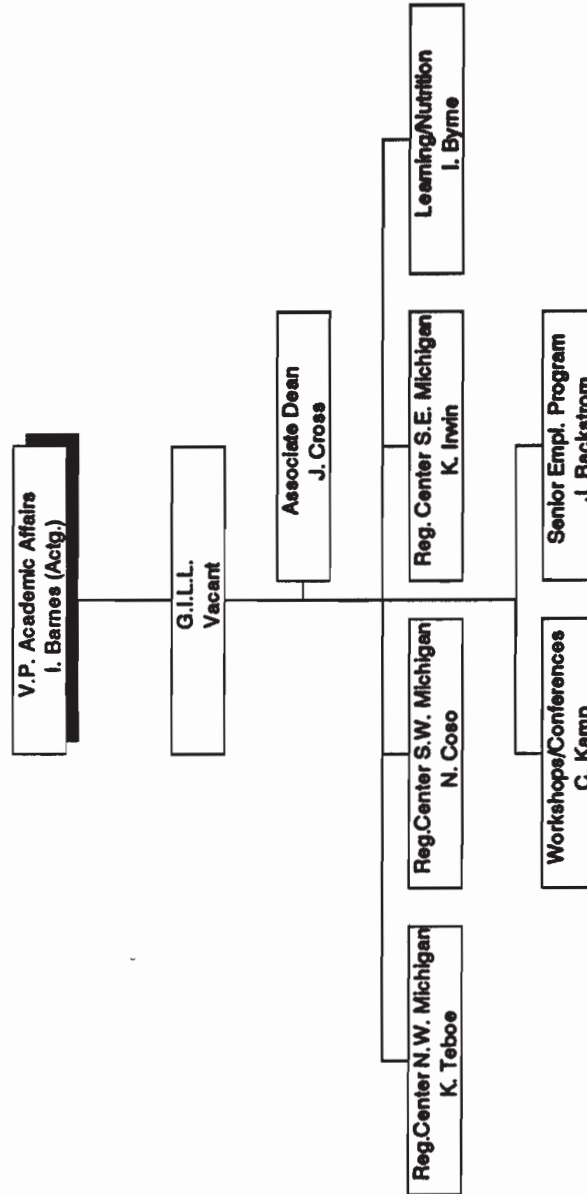
FERRIS STATE UNIVERSITY  
ACADEMIC AFFAIRS DIVISION  
ENROLLMENT SERVICES



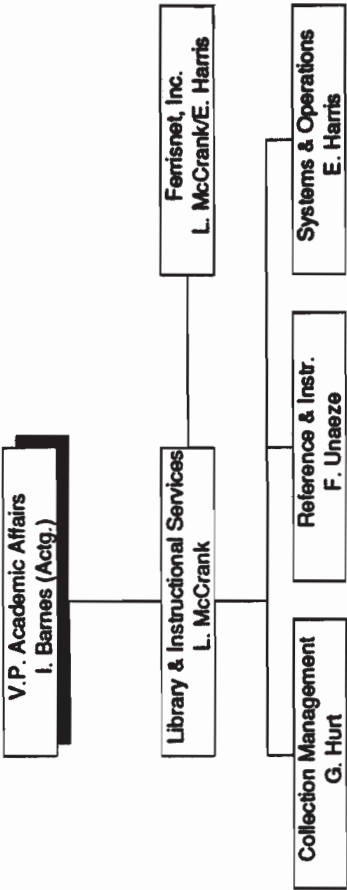


ORGANIZATIONAL CHARTS

FERRIS STATE UNIVERSITY  
 ACADEMIC AFFAIRS DIVISION  
 GERHOLZ INSTITUTE FOR LIFELONG LEARNING

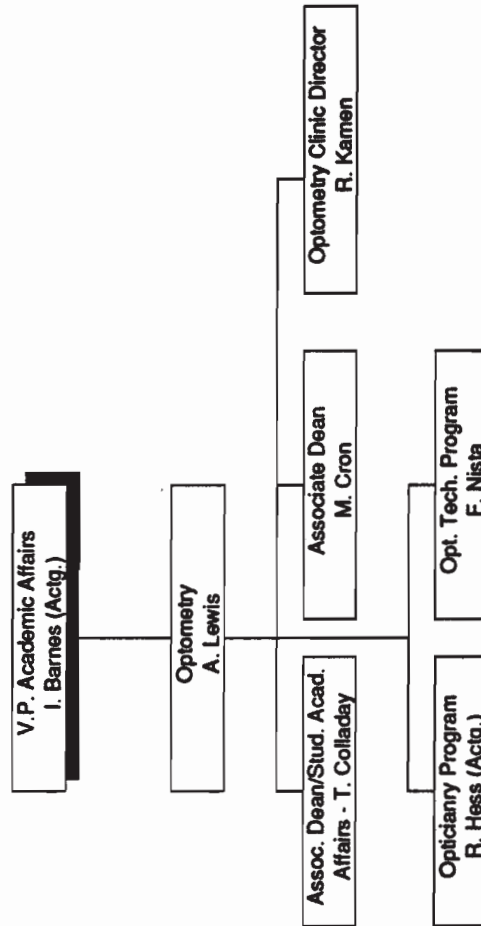


**FERRIS STATE UNIVERSITY**  
**ACADEMIC AFFAIRS DIVISION**  
**LIBRARY & INSTRUCTIONAL SERVICES**

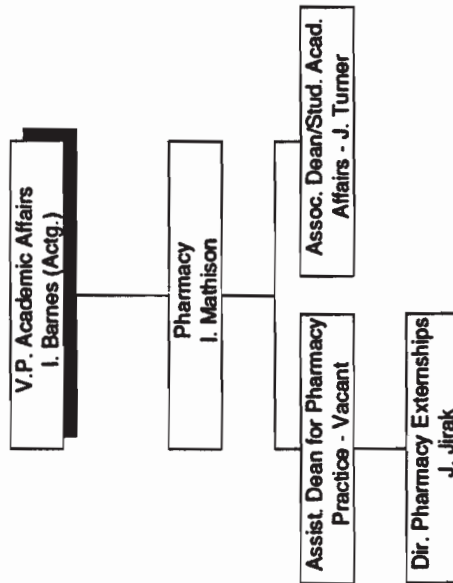


# ORGANIZATIONAL CHARTS

## FERRIS STATE UNIVERSITY ACADEMIC AFFAIRS DIVISION COLLEGE OF OPTOMETRY

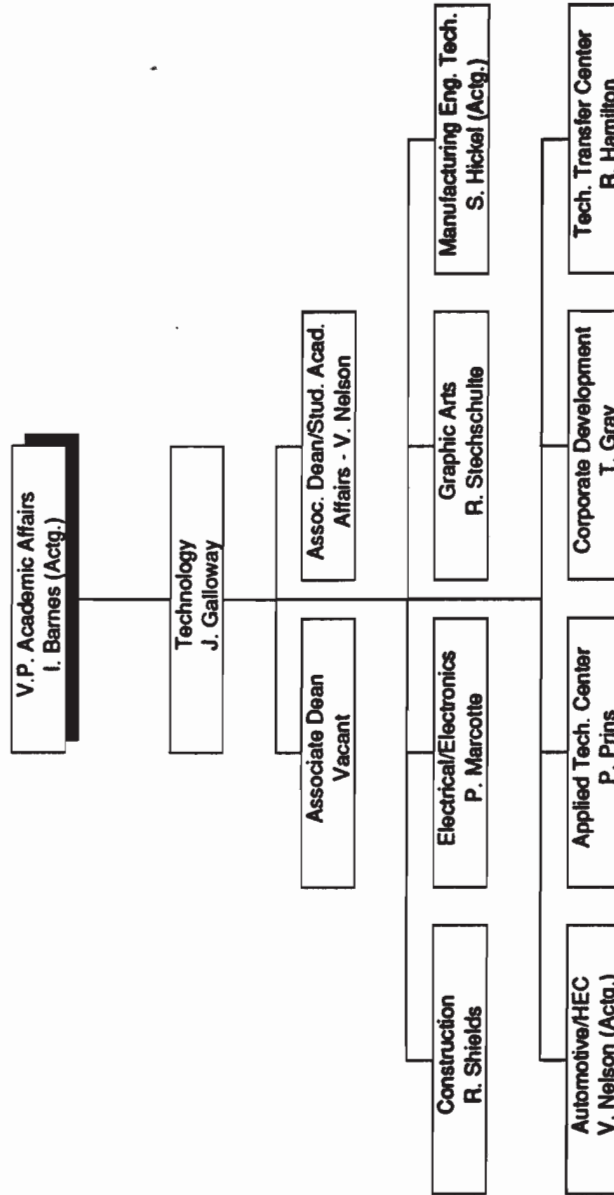


**FERRIS STATE UNIVERSITY  
ACADEMIC AFFAIRS DIVISION  
COLLEGE OF PHARMACY**

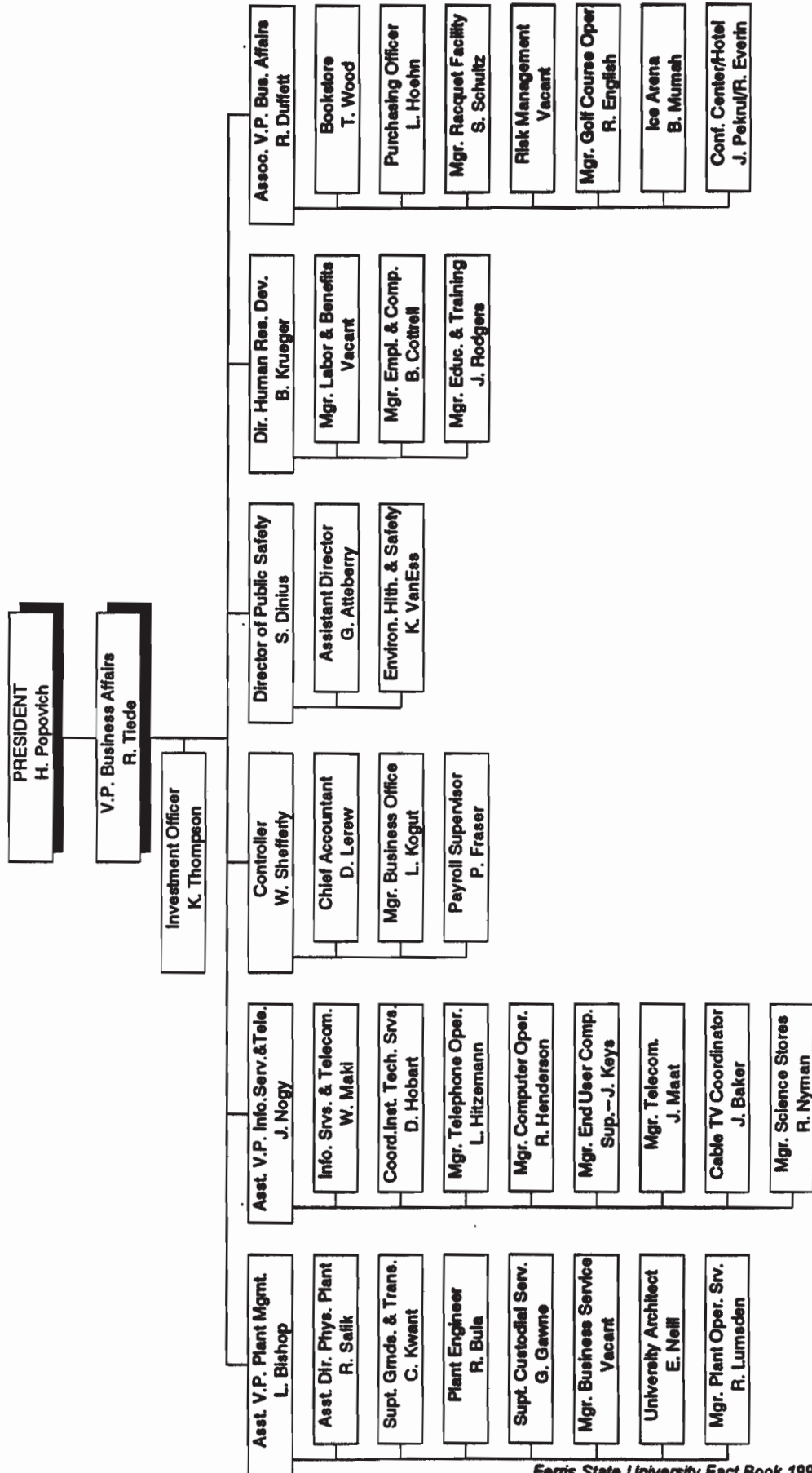


# ORGANIZATIONAL CHARTS

## FERRIS STATE UNIVERSITY ACADEMIC AFFAIRS DIVISION COLLEGE OF TECHNOLOGY

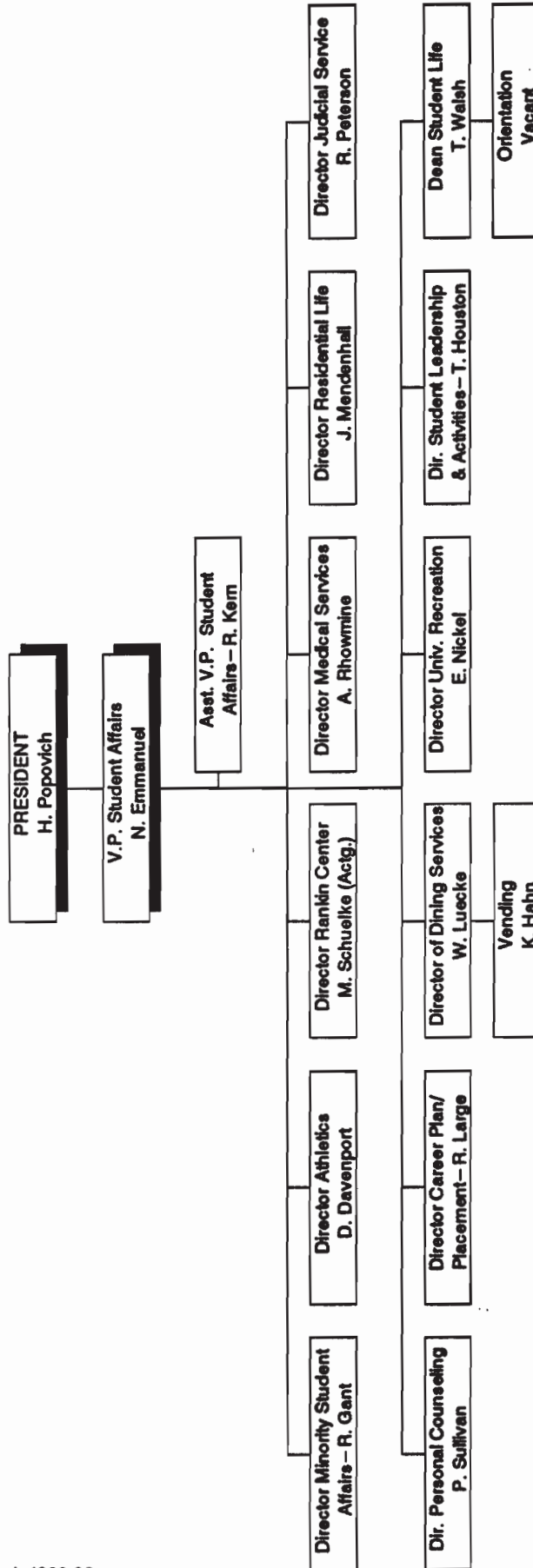


FERRIS STATE UNIVERSITY  
BUSINESS AFFAIRS DIVISION

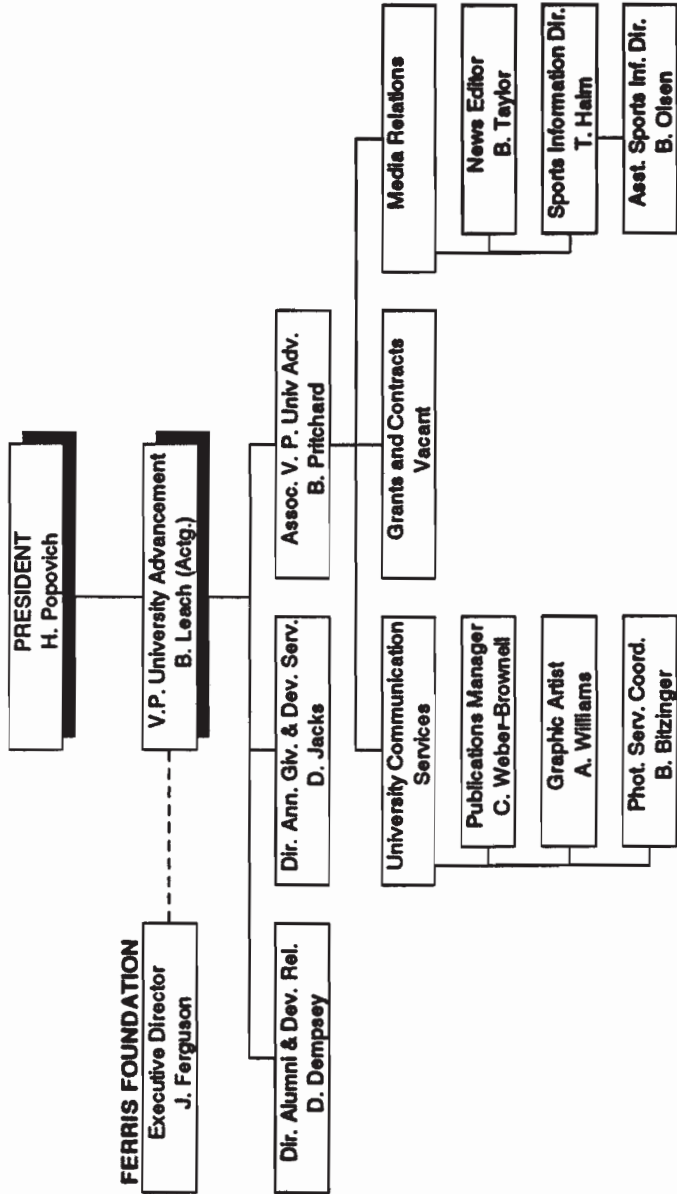


# ORGANIZATIONAL CHARTS

## FERRIS STATE UNIVERSITY STUDENT AFFAIRS DIVISION



FERRIS STATE UNIVERSITY  
UNIVERSITY ADVANCEMENT DIVISION

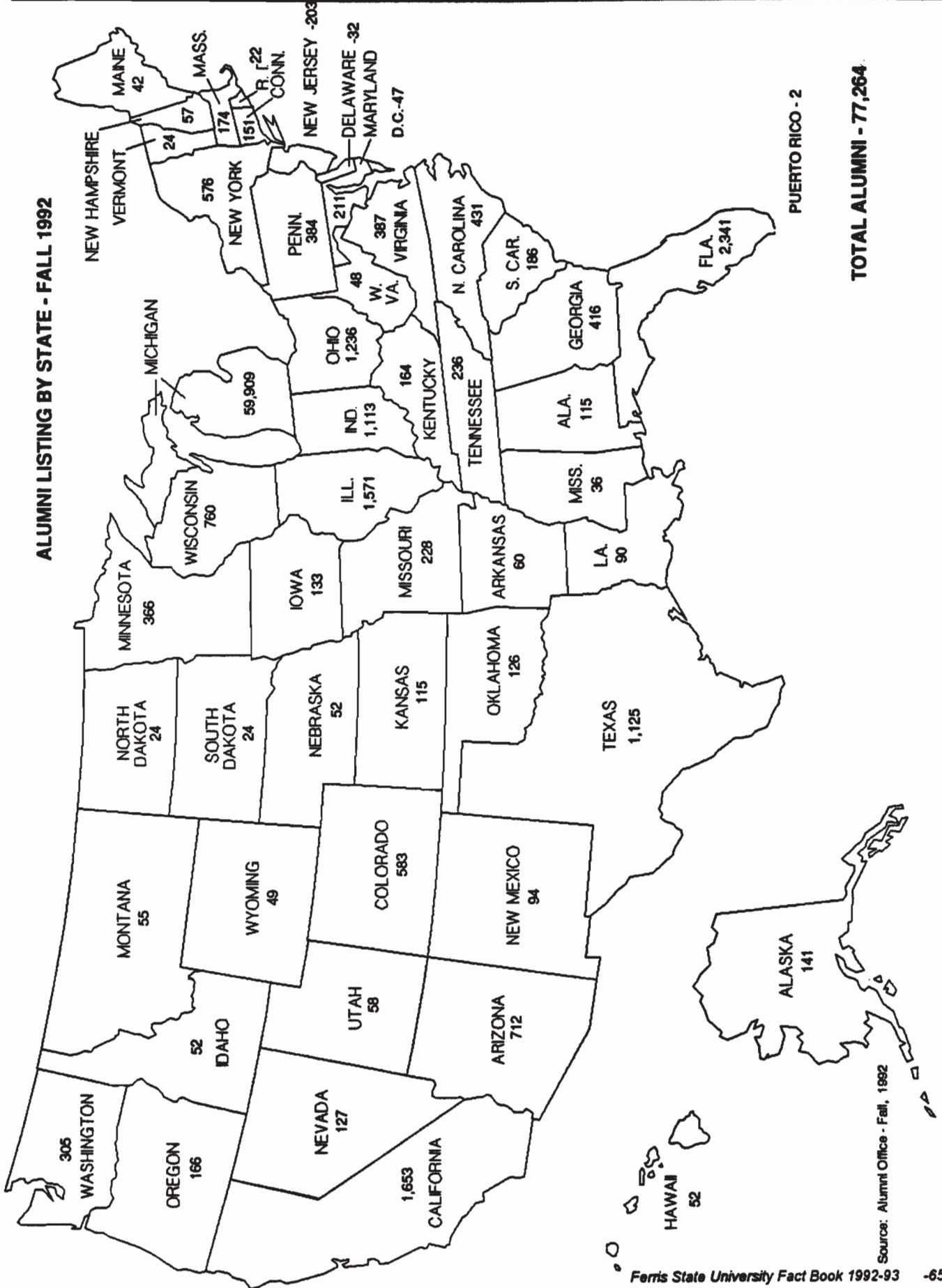




---

# Alumni

---



Source: Alumni Office - Fall, 1992

FERRIS STATE UNIVERSITY  
SUMMARY OF PLACEMENT ACTIVITY FOR 1990-91 GRADUATES

SCHOOL/DEGREE	EMPLOYED		CONTINUING EDUCATION						Not Seeking Employment		Seeking Employment		TOTAL RESPONSE NUMBER	UNKNOWN NUMBER	RESPONSE RATE %	TOTAL GRADS NO.				
	Related NO.	Field %	FERRIS		OTHER INSTITUTION		NO.	%	NO.	%	NO.	%								
			Undergrad. NO.	Graduate %	Undergrad. NO.	Graduate %														
<b>ALLIED HEALTH SCI</b>																				
Baccalaureate	99	80.5	10	8.1	1	0.8	0	0.0	2	1.6	0	0.0	3	2.4	8	6.5	123	27	82.0	150
Associate	107	71.8	6	4.0	29	19.5	0	0.0	1	0.7	0	0.0	1	0.7	5	3.4	149	36	80.5	185
<b>ARTS &amp; SCIENCES</b>																				
Baccalaureate	28	36.4	8	10.4	2	2.6	2	2.6	2	2.6	15	19.5	3	3.9	17	22.1	77	15	83.7	92
Associate	16	10.6	6	4.0	105	69.5	1	0.7	23	15.2	0	0.0	0	0.0	0	0.0	151	15	91.0	186
<b>BUSINESS</b>																				
Masters	2	33.3	0	0.0	0	0.0	0	0.0	0	0.0	0	0.0	0	0.0	3	50.0	6	2	75.0	8
Baccalaureate	382	60.6	77	12.2	10	1.6	4	0.6	2	0.3	4	0.6	9	1.4	142	22.5	630	177	78.1	807
Associate	25	15.2	8	4.9	106	64.6	0	0.0	11	6.7	0	0.0	2	1.2	12	7.3	164	35	82.4	199
<b>EDUCATION</b>																				
Masters	19	90.5	1	4.8	0	0.0	0	0.0	0	0.0	0	0.0	1	4.8	0	0.0	21	2	91.3	23
Baccalaureate	115	63.5	19	10.5	0	0.0	0	0.0	1	0.6	0	0.0	2	1.1	44	24.3	181	47	79.4	228
Associate	3	6.1	1	2.0	39	79.6	0	0.0	5	10.2	0	0.0	0	0.0	1	2.0	49	14	77.8	63
<b>OPTOMETRY</b>																				
O.D.	23	92.0	0	0.0	0	0.0	0	0.0	0	0.0	0	0.0	0	0.0	1	4.0	25	8	75.8	33
Baccalaureate	0	0.0	0	0.0	0	0.0	29	100.0	0	0.0	0	0.0	0	0.0	0	0.0	29	0	100.0	29
Associate	14	73.7	2	10.5	3	15.8	0	0.0	0	0.0	0	0.0	0	0.0	0	0.0	19	3	86.4	22
<b>PHARMACY</b>																				
Baccalaureate	78	96.3	0	0.0	0	0.0	0	0.0	0	0.0	1	1.2	1	1.2	1	1.2	81	23	77.9	104
<b>TECHNOLOGY</b>																				
Baccalaureate	179	85.6	7	3.3	1	0.5	1	0.5	0	0.0	1	0.5	0	0.0	20	9.6	209	35	85.7	244
Associate	98	23.7	24	5.8	249	60.3	0	0.0	14	3.4	0	0.0	1	0.2	27	6.5	413	56	88.1	469
<b>TOTAL/AVG. %</b>	1,188	51.1	169	7.3	545	23.4	37	1.6	61	2.6	23	1.0	23	1.0	281	12.1	2,327	495	82.5	2,822
Placement for 89-90 Graduates	1,335	54.5	178	7.3	563	23.0	32	1.3	57	2.3	26	1.1	7	0.3	251	10.2	2,449	474	83.8	2,923

Source: 1980-1991 Graduates and Their Beginning Salaries  
Career Planning and Placement Services

**FERRIS STATE UNIVERSITY**  
**BEGINNING ANNUAL SALARIES FOR BACCALAUREATE GRADUATES**  
**FOR THE YEAR 1990-1991**

<u>SCHOOL/CURRICULUM</u>	<u>NUMBER REPORTING</u>	<u>AVERAGE SALARY</u>	<u>80% RANGE</u>	
			<u>HIGH</u>	<u>LOW</u>
<b>ALLIED HEALTH</b>				
Ind. & Env. Health Mgmt.	13	25,690	31,980 -	21,284
Medical Record Adm.	13	21,811	29,120 -	18,720
Medical Technology	6	27,767	32,240 -	24,960
<b>ARTS &amp; SCIENCES</b>				
	N/A			
<b>BUSINESS</b>				
Accounting	16	21,877	27,000 -	15,808
Advertising	6	14,713	15,080 -	14,400
Business Administration	34	19,947	22,500 -	14,400
Computer Info Systems	36	27,522	31,320 -	24,000
Hospitality Management	8	18,578	21,500 -	12,480
Management	13	21,553	28,000 -	15,000
Marketing	13	20,874	28,000 -	15,000
Marketing/Pro Golf Mgt	28	16,701	20,280 -	12,000
Marketing/Retail	9	19,122	22,000 -	16,500
Marketing/Sales	18	23,736	27,100 -	21,000
Production Management	5	21,852	24,000 -	20,000
<b>EDUCATION</b>				
Criminal Justice	18	23,714	28,600 -	20,000
Teacher Education	12	20,852	24,284 -	16,289
TV Production	7	18,000	24,000 -	10,660
<b>OPTOMETRY</b>				
	N/A			
<b>PHARMACY</b>				
Registered Status	41	40,497	45,000 -	37,500
Intern Status	22	25,751	28,600 -	21,840
<b>TECHNOLOGY</b>				
Auto & Heavy Equip Mgt	36	26,787	30,000 -	21,500
Construction Management	8	23,015	24,440 -	21,000
HVACR Engr Tech	15	28,225	31,200 -	25,000
Manufacturing Engr Tech	14	28,353	34,500 -	20,280
Plastics Engr Tech	23	30,917	34,500 -	24,500
Printing Management	8	20,022	23,920 -	16,000
Product Design Engr Tech	12	28,408	31,000 -	24,960
Surveying	6	26,570	27,500 -	24,960
Welding Engineering Tech	14	31,166	34,000 -	29,000

NOTE : Salary tables include only the curriculum in which five or more students reported working in a field related to their major.  
 Figures do not include any incentive income over and above base salary.

Source: 1990-1991 Graduates and Their Beginning Salaries

RECIPIENTS OF ALUMNI AWARDS

Since 1956, Commencement week activities have included the presentation by the Ferris State University Alumni Association of Distinguished Alumni Awards recognizing exceptional career success and noteworthy fidelity and devotion to the University. Distinguished Alumni Award recipients are:

<p><b>1956</b> Frederick L. Caldena Ralph Pino Nate S. Shapero</p>	<p><b>1965</b> Leo F. Duggan C. Gordon Phillips George C. Quinnell</p>	<p><b>1975</b> Rex O. Graff Fred Schnarr Chester I. Williams</p>	<p><b>1985</b> Jean D. Deupree Arnold L. Johnson Bruce N. Parsons</p>
<p><b>1957</b> Walter R. Braund Jean DeBoer Edward M. Sharpe</p>	<p><b>1966</b> L. Dale Faunce Carlton H. Runcieman</p>	<p><b>1976</b> S. John Byington Gerald L. DeHaan Clare G. Johnson H. James Renaud</p>	<p><b>1986</b> Richard L. Antonini Bertil G. Carlson Kenneth L. Cook Jack D. Lewis</p>
<p><b>1958</b> C. V. Burnett John H. Butts Ray M. Hardy Maurice C. LaClaire Charles W. Martin Fred B. Post W. C. Taggart Robert H. Wisner</p>	<p><b>1967</b> Albert F. Cleveland Roy A. Darling James C. Finney, Sr. Willard J. Nash</p>	<p><b>1977</b> James R. Hess Florence I. Holden Robert J. Norsworthy</p>	<p><b>1987</b> Maurice Q. Bectel Roger W. Anderson H. Kearney Walters</p>
<p><b>1959</b> Howard C. Grimes James T. Jones Willard J. Nash Arthur R. Sherk</p>	<p><b>1968</b> Norman E. Borgerson Ann W. Sawasky Reuben E. Trippensee</p>	<p><b>1978</b> Ruth Gibson Butler Leonard W. Gopp Robert C. Redman</p>	<p><b>1988</b> Marjorie L. Fleming George H. Ryan, Sr. Gordon E. Kamstra Charles E. Lippert</p>
<p><b>1960</b> Manley M. Ellis Thomas F. Heatley Thaddeus B. Taylor</p>	<p><b>1969</b> Carroll Boutell Elmon Cataline</p>	<p><b>1979</b> Peggy A. Frazier Thomas P. Scholler Lee A. Westberg</p>	<p><b>1989</b> Albert J. Coudron Kenneth W. Kirk George J. Menoutes Jerry R. Tubbs</p>
<p><b>1961</b> C. V. Buttleman Merta L. Reed Gideon E. Smith</p>	<p><b>1970</b> Charles E. Fairman Ethel Taylor Pierce John Stahlin</p>	<p><b>1980</b> E. Elaine Davies Kuno Hammerberg John F. Mangrum</p>	<p><b>1990</b> Philip E. Hoffman Dennis B. Lerner Roger G. Stoll Clinton L. Swinehart</p>
<p><b>1962</b> Walter Ambruster Joseph C. Hirschfield Hattie Smith Lear Baribeau</p>	<p><b>1971</b> Stanley J. Byington Gerald McKessy Raymond Sines</p>	<p><b>1981</b> Alvin L. Burrige Floyd E. Curtis Avis J. Ericson</p>	<p><b>1991</b> Darroll Z. Howard Jane Reagan Jones Kenneth E. McCourt</p>
<p><b>1963</b> Clare F. Jarecki Charles S. Neithercut John W. Tenny</p>	<p><b>1972</b> Clarence Freeman Delbert Long Ramsay Wardrop</p>	<p><b>1982</b> Howard L. Dell Jack M. Newcomb Rena D. Westra</p>	<p><b>1992</b> Paul E. Boyer Richard E. Hurst Carolyn C. Kilpatrick James Middaugh</p>
<p><b>1964</b> Bess Rose Fishman Lewie H. Hull J. Arthur Pino</p>	<p><b>1973</b> Bert C. Brennan Albert B. Doherty, III John W. Spicer Fred A. Westerman</p>	<p><b>1983</b> Douglas W. Call Darnell E. Cole Margaret Ethel Denise Elton "Ott" Gingrich</p>	<p><b>1984</b> Richard C. Andresen Edmund D. Farhat Kenneth J. Hicks</p>

Source: 1992 Spring Commencement Program

---

# Budget

---

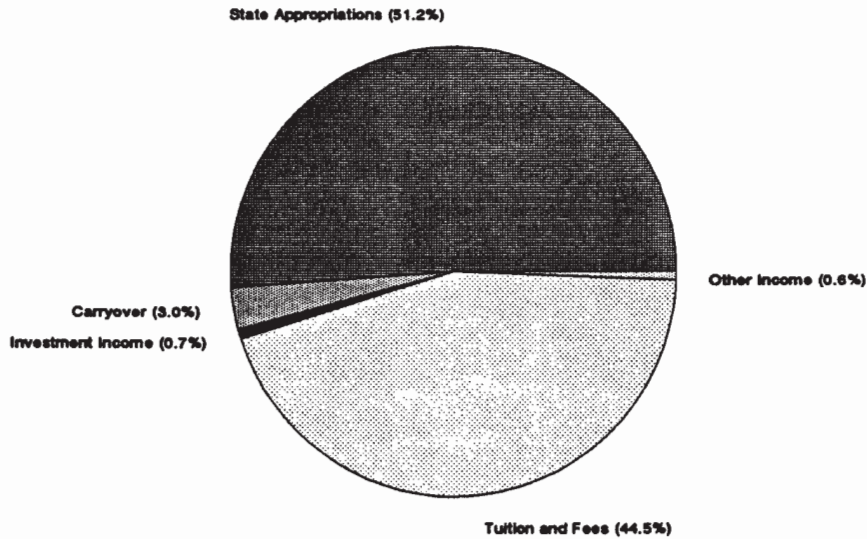
**FERRIS STATE UNIVERSITY  
FY-93 GENERAL FUND OPERATING BUDGET  
(AMOUNTS IN THOUSANDS)**

<b>REVENUES</b>	<b>FY-93 OPERATING BUDGET</b>
STATE APPROPRIATIONS	\$41,856
TUITION/FEES	36,385
INVESTMENT INCOME	600
OTHER INCOME	495
<b>TOTAL REVENUES</b>	<b>\$79,336</b>
<b>CARRYOVER</b>	<b>2,436</b>
<b>AVAILABLE FOR ALLOCATION</b>	<b>\$81,772</b>
<b>EXPENDITURES</b>	
SALARY/WAGE/BENEFIT	\$63,678
SUPPLY/EXPENSE	9,701
ATHLETIC FEE TRANSFER	425
DEFERRED MAINTENANCE	900
UTILITIES	2,063
STUDENT ASSISTANCE	2,079
EQUIPMENT	507
DESIGNATED PROGRAMS	425
BUDGET INITIATIVES	600
OFF CAMPUS PROGRAMS	453
<b>TOTAL EXPENDITURES</b>	<b>\$80,831</b>
Net of Revenue/Expenditure	\$942
One-Time Savings	1,450
<b>Combined Balance for Carryover</b>	<b>\$2,392</b>

Source: Budget Office, General Fund Operating Budget FY-92/93

**FERRIS STATE UNIVERSITY  
REVENUE SUMMARY  
(AMOUNTS IN THOUSANDS)**

	AMOUNT	PERCENT
STATE APPROPRIATIONS	\$41,856	51.2%
INVESTMENT INCOME	600	0.7%
TUITION AND FEES	36,385	44.5%
OTHER INCOME	495	0.6%
CARRYOVER	2,436	3.0%
TOTAL	\$81,772	

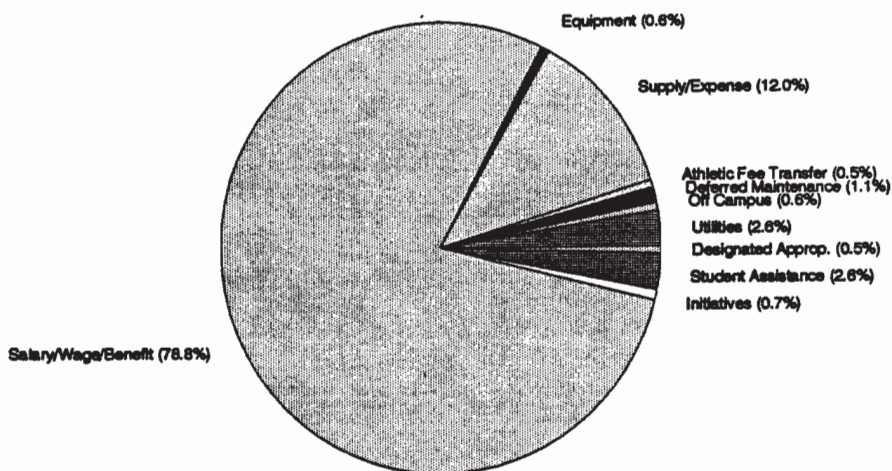


Source: Budget Office, General Fund Operating Budget FY-82/83



**FERRIS STATE UNIVERSITY  
EXPENDITURE SUMMARY  
(AMOUNTS IN THOUSANDS)**

	AMOUNT	PERCENT
SALARY/WAGE/BENEFIT	\$63,678	78.8%
SUPPLY/EXPENSE	9,701	12.0%
ATHLETIC FEE TRANSFER	425	0.5%
DEFERRED MAINTENANCE	900	1.1%
UTILITIES	2,063	2.6%
STUDENT ASSISTANCE	2,079	2.6%
EQUIPMENT	507	0.6%
DESIGNATED APPROP.	425	0.5%
OFF CAMPUS	453	0.6%
INITIATIVES	600	0.7%
<b>TOTAL</b>	<b>\$80,831</b>	



Source: Budget Office, General Fund Operating Budget FY-82/83

**BUDGETARY PLANNING AND ANALYSIS  
SUMMARY OF 1992-93 TUITION/FEES AND ROOM/BOARD  
MICHIGAN PUBLIC UNIVERSITIES**

	<b>FY-93 TUITION</b>	<b>TUITION RANK</b>	<b>FY-93 RM/BRD</b>	<b>ROOM/ BOARD RANK</b>	<b>FY-93 TOTAL COST</b>	<b>TOTAL COST RANK</b>
University of Michigan	4,584	1	4,285	1	8,869	1
Michigan State	4,191	2	3,598	11	7,789	2
Michigan Tech	3,249	3	3,604	10	6,853	3
Western Michigan	2,959	7	3,827	3	6,786	4
<b>Ferris</b>	<b>2,970</b>	<b>6</b>	<b>3,707</b>	<b>8</b>	<b>6,677</b>	<b>5</b>
Lake Superior	2,694	10	3,815	4	6,509	6
Oakland	2,758	8	3,715	7	6,473	7
Eastern Michigan	2,590	14	3,850	2	6,440	8
Grand Valley	2,623	12	3,800	5	6,423	9
Central Michigan	2,653	11	3,724	6	6,377	10
Saginaw Valley	2,620	13	3,535	12	6,155	11
Northern Michigan	2,451	15	3,684	9	6,135	12
Wayne State	3,030	5				
UM - Flint	2,700	9				
UM - Dearborn	3,141	4				
<b>UNWEIGHTED AVERAGE</b>	<b>3,014</b>		<b>3,762</b>		<b>6,791</b>	

Sources: Presidents Council, State Universities of Michigan  
Summary of Tuition/Housing Charges, 9/15/92

---

# Facilities

---

## SUMMARY OF FACILITIES OWNED OR RENTED BY FERRIS STATE UNIVERSITY

BUILDING	SQUARE FEET	CUBIC FEET	YEAR CONSTRUCTED OR IMPROVED
<b>GENERAL FUNDED FACILITIES</b>			
ALUMNI BUILDING	34,600	510,000	1929
AUTOMOTIVE CENTER	77,000	1,235,400	1956-88
BISHOP HALL	50,900	480,600	1968-87
BUSINESS BUILDING	90,600	700,000	1970
CARILLON TOWER	100	4,900	1968
CONSTRUCTION TECHNOLOGY	23,400	500,000	1962
CREATIVE ARTS	7,200	93,900	1965
DEPT OF PUBLIC SAFETY	4,400	35,000	1959-83
EWIGLEBEN SPORTS COMPLEX	39,800	567,950	1974-82
GENERAL SERVICES BLDG	27,143	490,330	1984-88
GROUND FACILITIES	9,032	98,856	1979
HEALTH CENTER (50%)	9,200	91,250	1959-67
HEALTH & PHYS EDUC	96,300	2,220,000	1962
HEAVY EQUIPMENT TECH	52,000	1,188,000	1987
INSTR RESOURCE CENTER	54,700	630,000	1969
JOHNSON HALL	33,600	328,600	1959
LIBRARY	57,000	723,900	1967
MUSIC CENTER	10,000	137,900	1962
PENNOCK HALL	50,900	480,600	1968-77
PHARMACY BUILDING	62,200	1,214,300	1972
PLASTICS TECHNOLOGY	18,800	230,700	1987
POWER PLANT	19,900	421,900	1955-88
PRAKKEN BUILDING	42,100	503,900	1952
SCIENCE BUILDING	107,300	1,680,000	1955-67
STARR BUILDING	86,400	1,607,200	1962
SWAN BUILDING	131,600	1,685,400	1966-88
TOP TAGGART EAST	400	3,000	1965
TOP TAGGART WEST	800	6,000	1970
UNIVERSITY RESIDENCE	6,140	49,120	1958-84
VFS ALLIED HEALTH BLDG	67,400	1,493,800	1979
WEST BUILDING	23,700	292,500	1952-85
WEST COMMONS	19,800	269,300	1968
<b>TOTAL GENERAL FUNDED</b>	<b>1,314,415</b>	<b>19,974,306</b>	
<b>FSU'S GRAND TOTAL</b>	<b>3,009,402</b>	<b>37,614,178</b>	

Source: University Architect

## FACILITIES

### SUMMARY OF FACILITIES OWNED OR RENTED BY FERRIS STATE UNIVERSITY

<u>BUILDING</u>	<u>SQUARE FEET</u>	<u>CUBIC FEET</u>	<u>YEAR CONSTRUCTED OR IMPROVED</u>
<b>NON-GENERAL FUNDED FACILITIES</b>			
BOND HALL	90,500	820,400	1966
BROPHY HALL	47,000	482,750	1962
CARLISLE HALL	47,200	423,000	1957
CLARION HOTEL COMPLEX	72,789	582,000	1990
CLARK HALL	41,500	360,900	1960
CONFERENCE CENTER	25,238	380,000	1990
COPY CENTER	3,380	34,400	1969
COUNTY STORAGE (RENTED)	20,000	240,000	1989
CRAMER HALL	91,700	824,700	1969
EAST CAMPUS APARTMENTS	72,600	636,200	1955
HALLISY HALL	44,700	406,000	1958
HEALTH CENTER (50%)	9,200	91,250	1959-67
HELEN FERRIS HALL	44,300	383,000	1956
HENDERSON HALL	44,900	405,500	1965
ICE ARENA	64,900	925,850	1974
KATKE GOLF CART STORAGE	2,800	27,600	1984
KATKE CLUBHOUSE/MAINT BLDG	5,600	83,200	1974
KNOLLCREST COMMONS	11,094	292,860	1961
MASSELINK COMPLEX	104,700	942,300	1955-58
MCKESSY HOUSE	6,534	52,000	1989
MCNERNEY HALL	47,000	482,750	1962
MERRILL HALL	51,700	515,050	1961
MILLER HALL	47,382	444,245	1963
M.R.P.C.	16,836	192,612	1985-87
PICKELL HALL	50,400	468,600	1964
PUTERBAUGH HALL	46,400	436,400	1965
RACQUET BALL FACILITY	38,800	994,000	1980-87
RANKIN CENTER	109,100	1,385,900	1958-87
SOUTH CAMPUS APARTMENTS	53,200	466,400	1958
SOUTH COMMONS	14,664	161,895	1963
SOUTHWEST COMMONS	19,500	253,600	1965-86
SOUTHWEST POWER PLANT	2,200	33,200	1964
TAGGART HALL	47,800	450,600	1964
TRAVIS HALL	51,700	515,050	1961
VANDERCOOK HALL	42,350	394,000	1957
WARD HALL	41,320	407,260	1963
WEST CAMPUS APARTMENTS	164,000	1,644,400	1969
<b>TOTAL NON-GENERAL FUNDED</b>	<b>1,604,487</b>	<b>17,639,872</b>	

---

**FERRIS STATE UNIVERSITY  
TIMME LIBRARY**  
Fall, 1992

---

Holdings

---

Monograph Titles	211,725
Serial Titles	4,674
Periodical Subscriptions	4,092
Physical Volumes	281,659
Items Barcoded for Circulation	288,923
Microforms (pieces)	3,161,385
U.S. Documents	138,521
Cartographic Materials	6,000
Miscellaneous Media (pieces)	60,982
Manuscripts (linear feet)	821.5

---

Services  
Averaged by Week

---

Hours Open	84
Attendance (Fall Quarter)	10,576
Reference Transactions	566
Online Database Searches	3
Group Presentation	315

NOTE: \*Monograph Titles...Items\* are current. The remainder of the statistics are from the most recent IPEDS Report.

Source: FSU Library

# Ferris State University Campus Map Key

BUILDING	ABBREVIATION	COORDINATES	BUILDING	ABBREVIATION	COORDINATES	BUILDING	ABBREVIATION	COORDINATES
Alumni Building	ALB	A7	Northwood Hall	NRH	F4	College of Arts & Sciences	COL	F1
Blumenfeld Center	BMC	D2	Office of Technology	OT	D7	Health Services	HLS	F2
Business Administration	BUS	F6	Physical Education	PE	D10	Human Resources	HR	F3
College of Education	COL	F5	Public Safety	PS	C1	Information Systems	IS	F4
College of Health Professions	CHP	F5	Student Center	SC	C2	Library	LIB	F5
College of Liberal Arts	CLA	F5	Student Union	SU	C3	Manufacturing Division	MDF	F6
College of Science	CLS	F5	Student Union	SU	C4	Manufacturing Division	MDF	F6
College of Social Work	CSW	F5	Student Union	SU	C5	Manufacturing Division	MDF	F6
College of Business	COL	F5	Student Union	SU	C6	Manufacturing Division	MDF	F6
College of Arts & Sciences	COL	F5	Student Union	SU	C7	Manufacturing Division	MDF	F6
College of Education	COL	F5	Student Union	SU	C8	Manufacturing Division	MDF	F6
College of Health Professions	CHP	F5	Student Union	SU	C9	Manufacturing Division	MDF	F6
College of Liberal Arts	CLA	F5	Student Union	SU	C10	Manufacturing Division	MDF	F6
College of Science	CLS	F5	Student Union	SU	C11	Manufacturing Division	MDF	F6
College of Social Work	CSW	F5	Student Union	SU	C12	Manufacturing Division	MDF	F6
College of Business	COL	F5	Student Union	SU	C13	Manufacturing Division	MDF	F6
College of Arts & Sciences	COL	F5	Student Union	SU	C14	Manufacturing Division	MDF	F6
College of Education	COL	F5	Student Union	SU	C15	Manufacturing Division	MDF	F6
College of Health Professions	CHP	F5	Student Union	SU	C16	Manufacturing Division	MDF	F6
College of Liberal Arts	CLA	F5	Student Union	SU	C17	Manufacturing Division	MDF	F6
College of Science	CLS	F5	Student Union	SU	C18	Manufacturing Division	MDF	F6
College of Social Work	CSW	F5	Student Union	SU	C19	Manufacturing Division	MDF	F6
College of Business	COL	F5	Student Union	SU	C20	Manufacturing Division	MDF	F6
College of Arts & Sciences	COL	F5	Student Union	SU	C21	Manufacturing Division	MDF	F6
College of Education	COL	F5	Student Union	SU	C22	Manufacturing Division	MDF	F6
College of Health Professions	CHP	F5	Student Union	SU	C23	Manufacturing Division	MDF	F6
College of Liberal Arts	CLA	F5	Student Union	SU	C24	Manufacturing Division	MDF	F6
College of Science	CLS	F5	Student Union	SU	C25	Manufacturing Division	MDF	F6
College of Social Work	CSW	F5	Student Union	SU	C26	Manufacturing Division	MDF	F6
College of Business	COL	F5	Student Union	SU	C27	Manufacturing Division	MDF	F6
College of Arts & Sciences	COL	F5	Student Union	SU	C28	Manufacturing Division	MDF	F6
College of Education	COL	F5	Student Union	SU	C29	Manufacturing Division	MDF	F6
College of Health Professions	CHP	F5	Student Union	SU	C30	Manufacturing Division	MDF	F6
College of Liberal Arts	CLA	F5	Student Union	SU	C31	Manufacturing Division	MDF	F6
College of Science	CLS	F5	Student Union	SU	C32	Manufacturing Division	MDF	F6
College of Social Work	CSW	F5	Student Union	SU	C33	Manufacturing Division	MDF	F6
College of Business	COL	F5	Student Union	SU	C34	Manufacturing Division	MDF	F6
College of Arts & Sciences	COL	F5	Student Union	SU	C35	Manufacturing Division	MDF	F6
College of Education	COL	F5	Student Union	SU	C36	Manufacturing Division	MDF	F6
College of Health Professions	CHP	F5	Student Union	SU	C37	Manufacturing Division	MDF	F6
College of Liberal Arts	CLA	F5	Student Union	SU	C38	Manufacturing Division	MDF	F6
College of Science	CLS	F5	Student Union	SU	C39	Manufacturing Division	MDF	F6
College of Social Work	CSW	F5	Student Union	SU	C40	Manufacturing Division	MDF	F6
College of Business	COL	F5	Student Union	SU	C41	Manufacturing Division	MDF	F6
College of Arts & Sciences	COL	F5	Student Union	SU	C42	Manufacturing Division	MDF	F6
College of Education	COL	F5	Student Union	SU	C43	Manufacturing Division	MDF	F6
College of Health Professions	CHP	F5	Student Union	SU	C44	Manufacturing Division	MDF	F6
College of Liberal Arts	CLA	F5	Student Union	SU	C45	Manufacturing Division	MDF	F6
College of Science	CLS	F5	Student Union	SU	C46	Manufacturing Division	MDF	F6
College of Social Work	CSW	F5	Student Union	SU	C47	Manufacturing Division	MDF	F6
College of Business	COL	F5	Student Union	SU	C48	Manufacturing Division	MDF	F6
College of Arts & Sciences	COL	F5	Student Union	SU	C49	Manufacturing Division	MDF	F6
College of Education	COL	F5	Student Union	SU	C50	Manufacturing Division	MDF	F6

Handicap Parking - Only persons bearing State Handicap permits are allowed to park in marked handicap spaces

Meter Parking -

Motorcycle Parking -

Pay Lot -

BUS STOP -

