
Fact Book

1991-92



Old Main

Ferris State University

December 1991

Dear Colleague:

The Ferris State University Fact Book is published for you, the students, faculty, staff, alumni, and friends of the University, who seek accurate information about our University. This first edition is a document which is designed to answer the most frequently asked questions about Ferris State University. It is with pleasure that we share the information with you.

We encourage you to review this work and solicit your suggestions for improvement of future issues.

Our appreciation is extended to the many offices which assisted us with the development of the information.

The project was conducted as a service to the university community by the Office of Institutional Studies. Special thanks goes to Sid Sytsma, who provided the computer hardware and software to desktop publish the book; Maureen Brockdorf, who input the data and designed the page formats; and Nina Worth, who assisted in editing the Fact Book.

Carol L. Maki
Director, Institutional Analysis

Mitzi A. Day
Data Analyst

Ferris State University
Office of Institutional Studies
Big Rapids, MI 49307
(616) 592-3801

EQUAL OPPORTUNITY/AFFIRMATIVE ACTION EMPLOYER

TABLE OF CONTENTS

GENERAL INFORMATION

Statement of Mission	1
Facts and Figures	2
Accreditation and Approval	3
Educational Grants and Scholarships	4

STUDENTS/ENROLLMENT

Enrollment Listing of Resident Students by County	7
Enrollment Listing of Non-Resident Students by State	8
1991-92 Estimated Expenses (Tuition)	9
Total Headcount Enrollment, Fall 1965-1991	10
5-Year Headcount Enrollment Overview by College	11
Percent of Students by College	12
Comparative Enrollment Report by College	13
Enrollment by Age (Undergraduate Students)	14
Enrollment by Age (Graduate Students)	15
Enrollment by Age (First Professional Students)	16
Total Headcount Enrollment Compared to FTE	17
Student Credit Hour Production	18
Grade Distribution Report	19

DEGREES

Degrees Conferred by Program (Allied Health Sciences)	21
Degrees Conferred by Program (Arts & Sciences)	22
Degrees Conferred by Program (Business)	24
Degrees Conferred by Program (Education)	26
Degrees Conferred by Program (Optometry & Pharmacy)	27
Degrees Conferred by Program (Technology)	28
Summary of Degrees Conferred at FSU	30

FACULTY/STAFF

Full-Time University Staff by Job Category & Sex	31
Part-Time University Staff by Job Category & Sex	32
Total University Staff by Job Category & Sex	33

TABLE OF CONTENTS

ORGANIZATIONAL CHARTS

Board of Control	35
Board of Control/President	36
President	37
Office of Legal Affairs	38
Academic Affairs Division	39
Office of Academic Affairs	40
Academic Affairs Division/College of Allied Health Sciences	41
Academic Affairs Division/College of Arts & Sciences	42
Academic Affairs Division/College of Business	43
Academic Affairs Division/College of Education	44
Academic Affairs Division/Enrollment Services	45
Academic Affairs Division/Gerholz Institute for Lifelong Learning	46
Academic Affairs Division/Library	47
Academic Affairs Division/College of Optometry	48
Academic Affairs Division/College of Pharmacy	49
Academic Affairs Division/College of Technology	50
Business Affairs Division	51
Student Affairs Division	52
University Advancement Division	53

ALUMNI

Alumni Listing by State	55
Summary of Placement Activity for 1989-90 Graduates	56
Recipients of Alumni Awards	57

BUDGET

FY-92 General Fund Operating Budget	59
Revenue Summary	60
Expenditure Summary	61
Summary of 1991-92 Tuition Fees & Room/Board	62

FACILITIES

Summary of Facilities Owned or Rented by FSU(Non-General Fund)	63
Summary of Facilities Owned or Rented by FSU(General Fund)	64
Timme Library	65
Ferris State University Campus Map	66

General Information

STATEMENT OF MISSION

Ferris State University is Michigan's applied polytechnic university. Its mission is to teach students in a number of applied technology fields and in other selected professional fields where there is sustained and significant career potential. Ferris educates its students to be employable and capable of professional growth, and further, to contribute to their profession and to a constantly changing, global society.

Our Students

We are committed to providing our students with strong curricula emphasizing practical, usable skills blended with a relevant general education foundation. This is accomplished in a caring environment with personal attention and close faculty-student interaction. We offer educational opportunity, with an "open door" admission component, to a diverse array of students, including high school graduates, transfer students from other colleges and universities, as well as some non-traditionally prepared students. We also foster positive co-curricular experiences leading to a fulfilling student life.

Our Programs

We are committed to keeping our educational programs and services responsive to the changing needs of manufacturing, business, health care, and other industries and professions which are critical to Michigan's economy. We achieve this by actively fostering beneficial relationships with those who employ our graduates.

Our Employees

We are committed to high standards of performance and pride in accomplishment, with the understanding that the strength of our organization is our people. We embrace the concepts of equal opportunity, affirmative action, and cultural diversity. We encourage teamwork, professional growth, acceptance of responsibility, and recognition for achievement.

Our Communities

We are committed to being good neighbors with full participation in community life and community service. We share local access to educational experiences, business opportunities, cultural events, leisure pursuits, and a variety of other activities with our communities.

Our State

We are committed to contributing to the economic vitality of our State by providing a well-trained and educated work force. We are actively involved in applied research relative to the transfer, application and management of technology, and its relationship to our society.

FERRIS STATE UNIVERSITY FACTS AND FIGURES 1990-91

HISTORY

Ferris State University is named for its founder, Woodbridge N. Ferris (1853-1928), a respected Michigan educator and politician who served two terms as the governor of the State of Michigan and was elected to the United States Senate.

Begun in 1884 as a private institution under the name of Big Rapids Industrial School, the school soon changed to the title, Ferris Industrial School and then, in 1899, Ferris Institute. Ferris joined the state higher education system in 1950, became Ferris State College in 1963 by an act of the Michigan Legislature and was granted university status by the Legislature in 1987.

The University's founding concept of providing students with marketable skills, though intended at the time for individuals who had lost their jobs following declines in the lumber and mining industries, remains relevant in today's fast-changing society. A distinctive combination of academic programs and a continuing tradition of career-oriented education have made Ferris a nationally recognized leader in preparing men and women for useful careers and enlightened citizenship in numerous health, technical, educational, business and other professional fields.

CAMPUS SIZE 600 acres

ACADEMIC DIVISIONS

- College of Allied Health Sciences
- College of Arts & Sciences
- College of Business
- College of Education
- College of Optometry
- College of Pharmacy
- College of Technology

ACCREDITATION AND APPROVAL

Ferris State University is accredited by the North Central Association of Colleges and Schools, and is certified by the State Approval Agency of the Department of Education and the Veterans Administration for the education and training of veterans to attend Ferris under the provisions of Title 38, United States Code.

The National Accreditation Council for Environmental Health Curricula of the National Environmental Health Association has accredited the On-Campus Industrial and Environmental Health Program.

The American Medical Association's Committee on Allied Health Education and Accreditation has accredited the Medical Laboratory Technology, Medical Technology, Medical Record Technology, Medical Record Administration, Nuclear Medicine Technology, Radiography and Respiratory Therapy Programs.

The American Dental Association Commission on Dental Accreditation has accredited the Dental Assistant, Dental Hygiene and Dental Technology programs.

The Nursing program is accredited by the Michigan State Board of Nursing.

The North Central Regional Accrediting Committee of the American Nurses Association has accredited the Nursing Continuing Professional Educational program.

The Accounting program is accredited by the State Board of Accountancy.

The American Bar Association has accredited the Legal Assistant program.

The Optometry Doctoral (O.D.) Program and the Optometric Technician Program are accredited by the Council on Optometric Education. The Opticianry Program is accredited by the Council on Opticianry Accreditation.

The National Academy of Opticianry has accredited the Opticianry Program.

The Pharmacy Program is accredited by the American Council on Pharmaceutical Education.

The Surveying Program has been accredited by the Related Accreditation Commission of the Accreditation Board for Engineering and Technology; and approved by the Michigan State Board of Registration for Architects, Engineers and Professional Land Surveyors.

All Teacher Education Programs are approved by the Michigan Department of Education.

GENERAL INFORMATION

EDUCATIONAL GRANTS AND SCHOLARSHIPS

FEDERAL

The Federal Pell Grant
The Supplemental Educational Opportunity Grant

STATE

The Michigan Educational Opportunity Grant Program
The Michigan Adult Part-Time Grant Program

INSTITUTIONAL

Ferris Grants-in-Aid
Ferris Honor Scholarship
Upperclass Achievement Scholarship
The Ferris State University Outstanding Minority
Student Scholarship
Minority Leadership Scholarship
Ferris Transfer Scholarship
Technical Education Scholarship
Special Ability-Based Scholarship
Athletic Grants
The American College of Health Care Administrators
Scholarship
The Blanche E. Arnold Scholarship
American Society for Quality Control Scholarship
Architectural Building Products Scholarship
ASHRAE--American Society of Heating, Refrigeration
and Air Conditioning Engineers
Tommy Armour Golf Company Scholarship
Bausch & Lomb "Contact with the Future" Educational
Travel Grant
Bausch and Lomb Excellence in Academic Achievement
Scholarship
Helen Bennett Memorial Award
Cascade/Paragon Scholarship
The Orrin B. Davenport Scholarship
The William Deck Scholarship Fund
The William E. Dengler Memorial Pharmacy
Scholarship
Dow-ICT Scholarship
Gregory Dreuth Memorial Scholarship
The Dean and Mrs. Ben Fairman Scholarship Fund
The Federated Garden Clubs of Michigan Scholarship

EDUCATIONAL GRANTS AND SCHOLARSHIPS

INSTITUTIONAL, CONT.

The C. Jerry Ford and Mary E. Ford
Scholarship
The Ernie Fuller Scholarship
Seymour Galina Grant
Debbie Garner Memorial Scholarship
Golf Manufacturers and Distributors Association
Scholarship
The James A. Gould Memorial Pharmacy Student
Assistance Fund
The Gary Gross, O.D. Scholarship
The Richard G. Hallisy Student Assistance Fund
Handicapped Student Scholarship
The Kurt Hellthaler Endowed Memorial Ophthalmic
Dispensing Award
Orville C. Hoffman, Jr. Endowed Scholarship
George N. Holcomb Memorial Scholarship Fund
Hurst Mechanical, Inc./Refrigeration
Engineering, Inc. Scholarship
The Joe Jemsek Scholarship
The Jerry Jourdain Endowed Memorial Scholarship
Gordon Kamstra Memorial Endowed Scholarship
The Fred W. Kellogg Scholarship
The Maude Korstange Scholarship
The Ruby MacNeill Endowed Memorial Scholarship
Dr. Vijay Mahida Surveying Scholarship
The Julia B. McCormick Scholarship Fund
Michigan Association of Commercial Dental
Labs Scholarship
Michigan Auto Parts Association Scholarship
Michigan Construction Equipment Dealers
Association Scholarship
Michigan Optometric Association Auxiliary
Scholarship
Michigan Society of Registered Land Surveyors
Scholarship
Charles A. Mount and Dorothy Mount Memorial
Scholarship
National 4-H Council Fellowship and
Scholarship

GENERAL INFORMATION

EDUCATIONAL GRANTS AND SCHOLARSHIPS

INSTITUTIONAL, CONT.

The Nordman Foundation Scholarship
Northamerican Heating and Air Conditioning
Association Scholarship
Plastics Brotherhood Association Scholarship
President's Scholarship
The David P. Prior Scholarship
The Progressive Engineering Consultants of
Grand Rapids, Inc. Scholarships
The Allen Puterbaugh Scholarship
Mylo Ragan Endowed Scholarship
The Rautiola/Nartron Tennis Scholarship
Walter G. Ritchie VICA Memorial Scholarship
Vincent J. Salierno Scholarship
Joseph D. Sasaki Scholarship Fund
School of Business Memorial Scholarship Fund
Sarah Shell Scholarship Award
Mike Shira Health Systems Management
Scholarship
Silhouette Optical Student Grant Program
Southeastern Michigan Hospital Purchasing
Management, Inc. Scholarship
Walter J. Stevenson Scholarship Fund
James Stewart Memorial Fund Scholarship
C. Alan Tressler Memorial Scholarship Fund
Varilux Student Grant
The Helen Ferris Vartan Scholarship Fund
Wayne County Society of Optometrists
Scholarship
WBDC Scholarship
West Central Chapter of the Michigan Society
of Registered Land Surveyors Scholarship
Dean W. Whitehead Memorial Scholarship

Source: 1990-1992 School Bulletin

Students/Enrollment

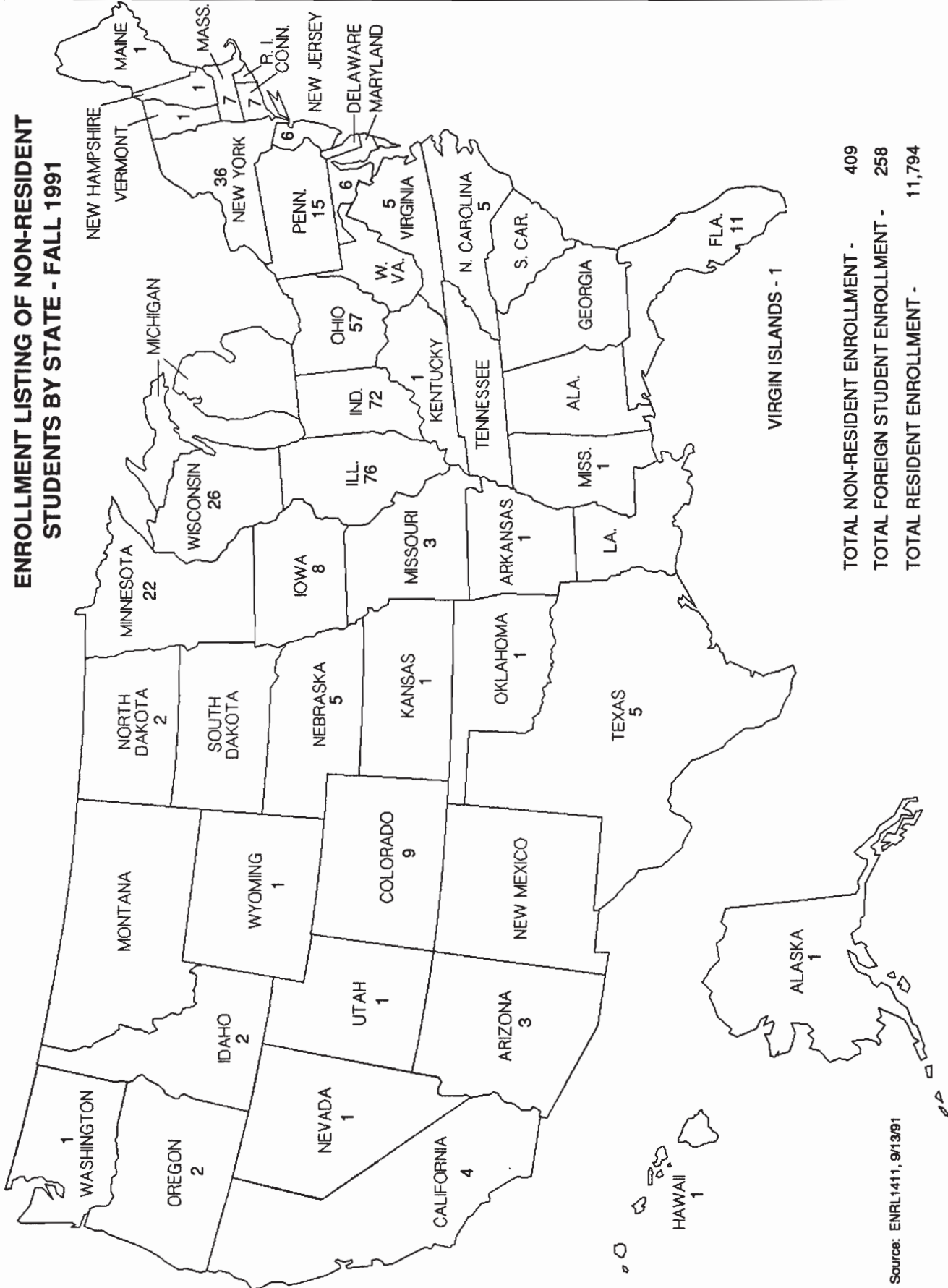
ENROLLMENT LISTING OF RESIDENT STUDENTS BY COUNTY - FALL 1991



Source: ENRL1410, 9/13/91

STUDENTS/ENROLLMENT

ENROLLMENT LISTING OF NON-RESIDENT STUDENTS BY STATE - FALL 1991



TOTAL NON-RESIDENT ENROLLMENT - 409
 TOTAL FOREIGN STUDENT ENROLLMENT - 258
 TOTAL RESIDENT ENROLLMENT - 11,794

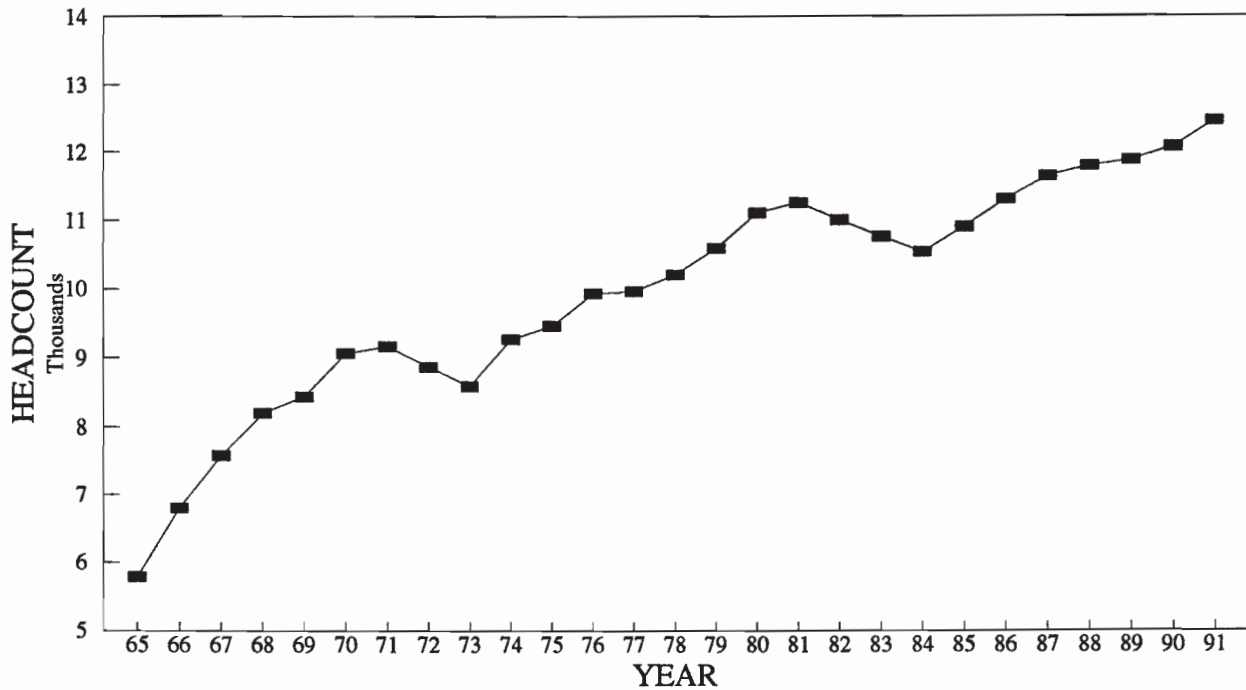
Source: ENRL1411, 9/13/91

**FERRIS STATE UNIVERSITY
1991-92 ESTIMATED EXPENSES**

	MICHIGAN RESIDENT		NON-RESIDENT	
	<u>TERM</u>	<u>YEAR</u>	<u>TERM</u>	<u>YEAR</u>
UNDERGRADUATE TUITION:				
Tuition & Fees (12-16 credit hours)	\$855	\$2,565	\$1,745	\$5,235
Room & Board (7-day meal plan)	<u>1,106</u>	<u>3,318</u>	<u>1,106</u>	<u>3,318</u>
SUBTOTAL	\$1,961	\$5,883	\$2,851	\$8,553
Books and Supplies	150	450	150	450
Personal Expenses	200	600	200	600
Refundable Fees	<u>10</u>	<u>30</u>	<u>10</u>	<u>30</u>
ESTIMATED TOTAL EXPENSES	\$2,321	\$6,963	\$3,211	\$9,633
PART-TIME TUITION:	\$72 per cr. hr.		\$145 per cr. hr.	
GRADUATE SCHOOL TUITION:	\$93 per cr. hr.		\$186 per cr. hr.	
PROFESSIONAL SCHOOL TUITION:				
Doctor of Optometry	\$1,800	\$5,400	\$3,655	\$10,965
Doctor of Pharmacy	\$1,800	\$5,400	\$3,655	\$10,965
FAMILY APARTMENTS				
One Bedroom	\$264 per month		\$264 per month	
Two Bedroom	\$281 per month		\$281 per month	
ALTERNATE MEAL PLAN				
Room and Board (5-day meal plan)	\$1,033	\$3,099	\$1,033	\$3,099

Source: Enrollment Services

TOTAL HEADCOUNT ENROLLMENT



**TOTAL HEADCOUNT ENROLLMENT
FALL ENROLLMENT**

1965	5,787	1979	10,596
1966	6,801	1980	11,112
1967	7,581	1981	11,261
1968	8,200	1982	11,008
1969	8,439	1983	10,767
1970	9,057	1984	10,540
1971	9,161	1985	10,909
1972	8,864	1986	11,310
1973	8,584	1987	11,643
1974	9,264	1988	11,792
1975	9,460	1989	11,878
1976	9,934	1990	12,076
1977	9,965	1991	12,461
1978	10,208		

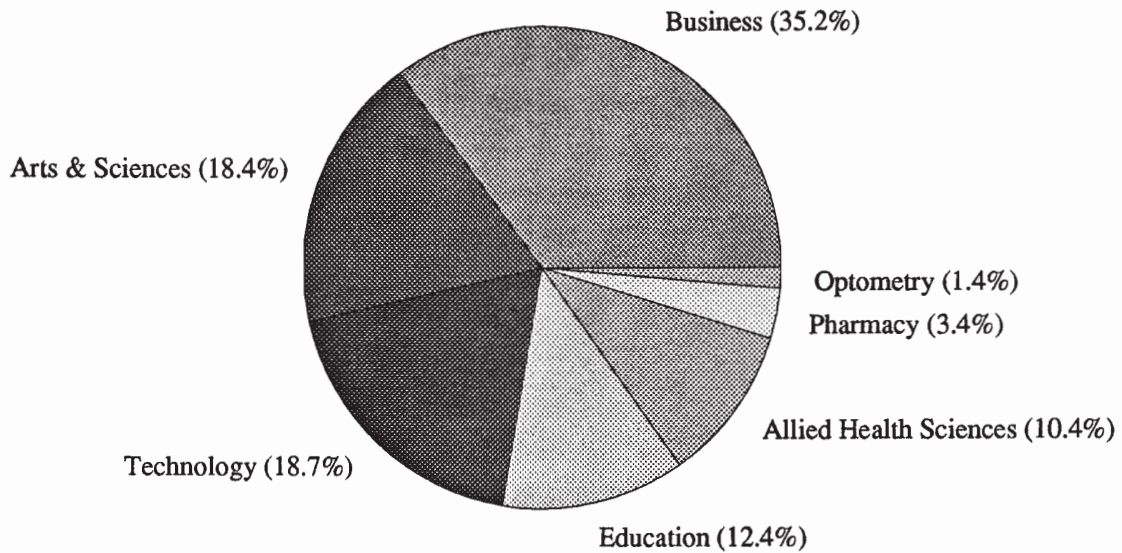
Source: Fall Quarter Enrollment Report
Office of the Registrar

**FERRIS STATE UNIVERSITY
5-YEAR HEADCOUNT ENROLLMENT OVERVIEW BY COLLEGE
FALL QUARTER**

COLLEGE	1987-88	1988-89	1989-90	1990-91	1991-92
ALLIED HEALTH SCIENCES	1,008	1,008	968	1,082	1,302
ARTS & SCIENCES	2,385	2,293	2,471	2,469	2,299
BUSINESS	4,223	4,230	4,298	4,336	4,384
EDUCATION	1,143	1,375	1,255	1,389	1,547
OPTOMETRY	208	203	297	169	174
PHARMACY	385	385	380	390	420
TECHNOLOGY	2,291	2,298	2,209	2,241	2,335
TOTAL	11,643	11,792	11,878	12,076	12,461

Source: Fall Quarter Enrollment Report
Office of the Registrar

**PERCENT OF STUDENTS BY COLLEGE
FALL QUARTER 1991**



STUDENT ENROLLMENT BY COLLEGE

BUSINESS	4,384
ARTS & SCIENCES	2,299
TECHNOLOGY	2,335
EDUCATION	1,547
ALLIED HEALTH SCIENCES	1,302
PHARMACY	420
OPTOMETRY	174
TOTAL	12,461

Source: Fall Quarter Enrollment Report
Office of the Registrar

COMPARATIVE ENROLLMENT REPORT BY COLLEGE

COLLEGE	MEN	WOMEN	1991 TOTAL	1990 TOTAL
BUSINESS	2,519	1,865	4,384	4,336
Masters Degree	28	19	47	49
B.S. Degree	2,302	1,357	3,659	3,551
Associate Degree	189	489	678	736
ARTS & SCIENCES	1,159	1,140	2,299	2,469
B.S. Degree	123	245	368	421
Associate Degree	54	58	112	130
Pre-Professional	624	614	1,238	1,383
General Studies	358	223	581	535
TECHNOLOGY	2,168	167	2,335	2,241
B.S. Degree	671	42	713	585
Associate Degree	1,497	125	1,622	1,656
EDUCATION	954	593	1,547	1,389
Masters Degree	14	17	31	51
B.S. Degree	883	397	1,280	1,199
Associate Degree	9	80	89	139
*Pre-teaching	48	99	147	0
ALLIED HEALTH SCIENCES	254	1,048	1,302	1,082
B.S. Degree	149	426	575	566
Associate Degree	79	444	523	516
*Pre-professional	26	178	204	0
PHARMACY	173	247	420	390
B.S. Degree	168	240	408	384
Pharm D Degree	5	7	12	6
OPTOMETRY	87	87	174	169
O.D. Degree	73	48	121	124
Associate Degree	14	39	53	45
TOTALS	7,314	5,147	12,461	12,076

*Effective Fall Quarter 1991, Pre-Teaching was transferred to the College of Education and several Pre-Professional programs were transferred to the College of Allied Health Sciences from the College of Arts & Sciences.

Source: Fall Quarter Enrollment Report
Office of the Registrar

STUDENTS/ENROLLMENT

ENROLLMENT BY AGE UNDERGRADUATE STUDENTS FALL 1991

AGE	FULL-TIME STUDENTS				PART-TIME STUDENTS			
	MALE	FEMALE	GRAND TOTAL		MALE	FEMALE	GRAND TOTAL	
>18	69	102	171	1.61%	1	1	2	0.13%
18	1,110	823	1,933	18.18%	11	10	21	1.33%
19	1,085	834	1,919	18.05%	58	33	91	5.77%
20	1,130	759	1,889	17.77%	75	48	123	7.79%
21	1,014	662	1,676	15.76%	87	35	122	7.73%
22	790	374	1,164	10.95%	75	44	119	7.54%
23	414	157	571	5.37%	59	24	83	5.26%
24	212	86	298	2.80%	43	24	67	4.25%
25	147	61	208	1.96%	24	15	39	2.47%
26	75	40	115	1.08%	27	28	55	3.49%
27	65	37	102	0.96%	23	18	41	2.60%
28	52	31	83	0.78%	30	26	56	3.55%
29	38	28	66	0.62%	20	34	54	3.42%
30	24	30	54	0.51%	24	25	49	3.11%
31	31	18	49	0.46%	14	19	33	2.09%
32	25	21	46	0.43%	13	31	44	2.79%
33	11	18	29	0.27%	19	22	41	2.60%
34	9	17	26	0.24%	13	27	40	2.53%
35	16	9	25	0.24%	13	32	45	2.85%
36	13	16	29	0.27%	17	28	45	2.85%
37	17	8	25	0.24%	17	30	47	2.98%
38	9	13	22	0.21%	13	25	38	2.41%
39	6	16	22	0.21%	13	25	38	2.41%
40	6	13	19	0.18%	12	21	33	2.09%
41	11	9	20	0.19%	10	20	30	1.90%
42	7	9	16	0.15%	4	26	30	1.90%
43	6	4	10	0.09%	9	16	25	1.58%
44	1	10	11	0.10%	8	16	24	1.52%
45	3	3	6	0.06%	9	7	16	1.01%
46	2	5	7	0.07%	1	14	15	0.95%
47	5	4	9	0.08%	2	6	8	0.51%
48	1	0	1	0.01%	1	14	15	0.95%
49	2	2	4	0.04%	0	13	13	0.82%
50	1	1	2	0.02%	1	9	10	0.63%
51	0	0	0	0.00%	1	7	8	0.51%
52	1	0	1	0.00%	2	3	5	0.32%
53	0	0	0	0.00%	2	2	4	0.25%
54	1	0	1	0.01%	3	4	7	0.44%
55	0	0	0	0.00%	0	1	1	0.06%
56	1	0	1	0.01%	0	2	2	0.13%
57	0	0	0	0.00%	0	2	2	0.13%
58	0	2	2	0.02%	0	2	2	0.13%
59	0	0	0	0.00%	0	1	1	0.06%
60	0	0	0	0.00%	0	0	0	0.00%
61	0	0	0	0.00%	0	1	1	0.06%
62	0	0	0	0.00%	0	0	0	0.00%
63	0	0	0	0.00%	0	0	0	0.00%
64	0	0	0	0.00%	0	0	0	0.00%
65	0	0	0	0.00%	0	0	0	0.00%
UNKNOWN	0	1	1	0.01%	10	23	33	2.09%
TOTAL	6,410	4,223	10,633	100.00%	764	814	1,578	100.00%

TOTAL FULL-TIME AND PART-TIME

	7,174	5,037	12,211
Average Age - Full-Time			21
Average Age - Part-Time			30
Average Age Full-Time and Part-Time			22

STUDENTS/ENROLLMENT

ENROLLMENT BY AGE
GRADUATE STUDENTS
FALL 1991

AGE	FULL-TIME STUDENTS			PART-TIME STUDENTS		
	MALE	FEMALE	GRAND TOTAL	MALE	FEMALE	GRAND TOTAL
>18	0	0	0 0.00%	0	0	0 0.00%
18	0	0	0 0.00%	0	0	0 0.00%
19	0	0	0 0.00%	0	0	0 0.00%
20	0	0	0 0.00%	0	0	0 0.00%
21	1	1	2 20.00%	0	0	0 0.00%
22	1	0	1 10.00%	0	0	0 0.00%
23	1	0	1 10.00%	1	0	1 1.47%
24	0	0	0 0.00%	0	2	2 2.94%
25	0	1	1 10.00%	0	1	1 1.47%
26	1	1	2 20.00%	2	0	2 2.94%
27	1	1	2 20.00%	2	4	6 8.82%
28	1	0	1 10.00%	2	2	4 5.88%
29	0	0	0 0.00%	7	0	7 10.29%
30	0	0	0 0.00%	1	2	3 4.41%
31	0	0	0 0.00%	3	1	4 5.88%
32	0	0	0 0.00%	2	1	3 4.41%
33	0	0	0 0.00%	0	1	1 1.47%
34	0	0	0 0.00%	0	0	0 0.00%
35	0	0	0 0.00%	1	1	2 2.94%
36	0	0	0 0.00%	0	1	1 1.47%
37	0	0	0 0.00%	0	1	1 1.47%
38	0	0	0 0.00%	1	2	3 4.41%
39	0	0	0 0.00%	0	2	2 2.94%
40	0	0	0 0.00%	0	2	2 2.94%
41	0	0	0 0.00%	2	0	2 2.94%
42	0	0	0 0.00%	1	4	5 7.35%
43	0	0	0 0.00%	4	0	4 5.88%
44	0	0	0 0.00%	0	1	1 1.47%
45	0	0	0 0.00%	0	2	2 2.94%
46	0	0	0 0.00%	3	0	3 4.41%
47	0	0	0 0.00%	1	0	1 1.47%
48	0	0	0 0.00%	0	1	1 1.47%
49	0	0	0 0.00%	0	0	0 0.00%
50	0	0	0 0.00%	0	0	0 0.00%
51	0	0	0 0.00%	1	0	1 1.47%
52	0	0	0 0.00%	0	1	1 1.47%
53	0	0	0 0.00%	0	0	0 0.00%
54	0	0	0 0.00%	0	0	0 0.00%
55	0	0	0 0.00%	0	0	0 0.00%
56	0	0	0 0.00%	0	0	0 0.00%
57	0	0	0 0.00%	0	0	0 0.00%
58	0	0	0 0.00%	0	0	0 0.00%
59	0	0	0 0.00%	0	0	0 0.00%
60	0	0	0 0.00%	0	0	0 0.00%
61	0	0	0 0.00%	0	0	0 0.00%
62	0	0	0 0.00%	0	0	0 0.00%
63	0	0	0 0.00%	0	0	0 0.00%
64	0	0	0 0.00%	0	0	0 0.00%
65	0	0	0 0.00%	0	0	0 0.00%
UNKNOWN	0	0	0 0.00%	2	0	2 2.94%
TOTAL	6	4	10 100.00%	36	32	68 100.00%

TOTAL FULL-TIME AND PART-TIME

	42	36	78
Average Age - Full-Time			25
Average Age - Part-Time			35
Average Age Full-Time and Part-Time			34

STUDENTS/ENROLLMENT

ENROLLMENT BY AGE
FIRST PROFESSIONAL STUDENTS
FALL 1991

AGE	FULL-TIME STUDENTS				PART-TIME STUDENTS		
	MALE	FEMALE	GRAND TOTAL		MALE	FEMALE	GRAND TOTAL
>18	0	0	0	0.00%	0	0	0
18	0	0	0	0.00%	0	0	0
19	0	1	1	0.75%	0	0	0
20	0	1	1	0.75%	0	0	0
21	9	6	15	11.28%	0	0	0
22	10	10	20	15.04%	0	0	0
23	13	9	22	16.54%	0	0	0
24	19	11	30	22.56%	0	0	0
25	11	5	16	12.03%	0	0	0
26	4	1	5	3.76%	0	0	0
27	2	0	2	1.50%	0	0	0
28	1	2	3	2.26%	0	0	0
29	3	3	6	4.51%	0	0	0
30	3	0	3	2.26%	0	0	0
31	0	3	3	2.26%	0	0	0
32	2	0	2	1.50%	0	0	0
33	0	2	2	1.50%	0	0	0
34	0	0	0	0.00%	0	0	0
35	0	0	0	0.00%	0	0	0
36	1	1	2	1.50%	0	0	0
37	0	0	0	0.00%	0	0	0
38	0	0	0	0.00%	0	0	0
39	0	0	0	0.00%	0	0	0
40	0	0	0	0.00%	0	0	0
41	0	0	0	0.00%	0	0	0
42	0	0	0	0.00%	0	0	0
43	0	0	0	0.00%	0	0	0
44	0	0	0	0.00%	0	0	0
45	0	0	0	0.00%	0	0	0
46	0	0	0	0.00%	0	0	0
47	0	0	0	0.00%	0	0	0
48	0	0	0	0.00%	0	0	0
49	0	0	0	0.00%	0	0	0
50	0	0	0	0.00%	0	0	0
51	0	0	0	0.00%	0	0	0
52	0	0	0	0.00%	0	0	0
53	0	0	0	0.00%	0	0	0
54	0	0	0	0.00%	0	0	0
55	0	0	0	0.00%	0	0	0
56	0	0	0	0.00%	0	0	0
57	0	0	0	0.00%	0	0	0
58	0	0	0	0.00%	0	0	0
59	0	0	0	0.00%	0	0	0
60	0	0	0	0.00%	0	0	0
61	0	0	0	0.00%	0	0	0
62	0	0	0	0.00%	0	0	0
63	0	0	0	0.00%	0	0	0
64	0	0	0	0.00%	0	0	0
65	0	0	0	0.00%	0	0	0
UNKNOWN	0	0	0	0.00%	0	0	0
TOTAL	78	55	133	100.00%	0	0	0

TOTAL FULL-TIME AND PART-TIME

78 55 133

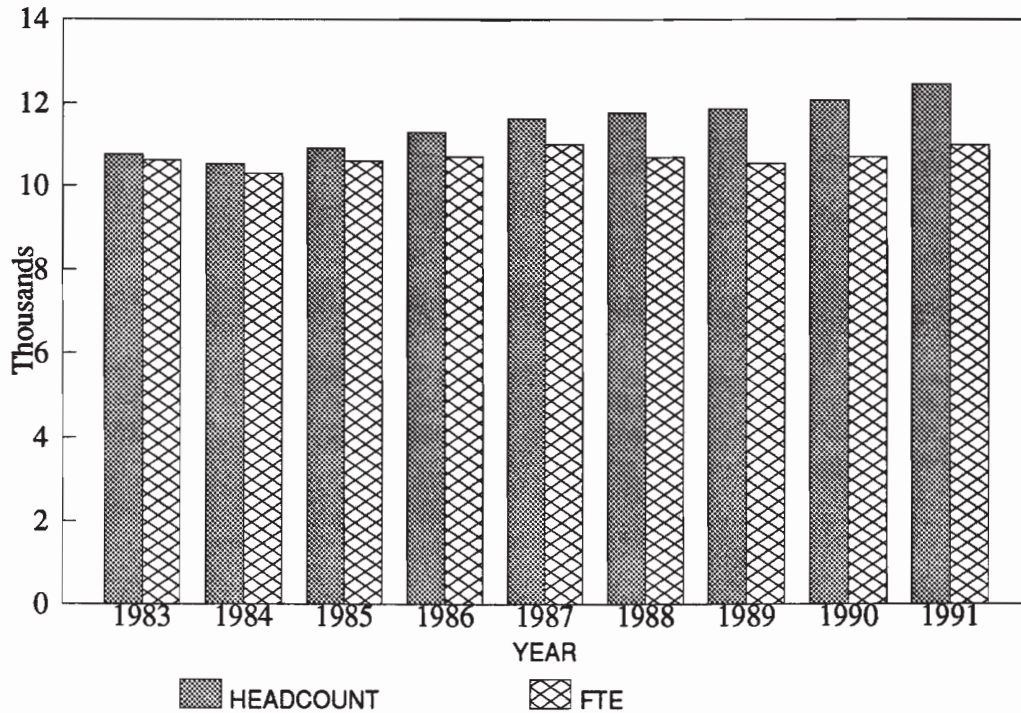
Average Age - Full-Time 24

Average Age - Part-Time 0

Average Age Full-Time and Part-Time 24

Source: INST2613-1, 9/27/91
IPEDS Age Report, Fall 1991

TOTAL HEADCOUNT ENROLLMENT COMPARED TO FTE



YEAR	HEADCOUNT	FTE
1983	10,767	10,618
1984	10,540	10,309
1985	10,909	10,608
1986	11,310	10,719
1987	11,643	11,024
1988	11,792	10,708
1989	11,878	10,548
1990	12,076	10,695
1991	12,461	10,988

NOTE: FTE - Full-Time Equated Student, i.e., 2 Half-Time Students = 1 FTE

Source: Headcount Enrollment: Fall Quarter Enrollment Report
 Student FTE: FACL 2425-2, Fall Quarter

STUDENTS/ENROLLMENT

STUDENT CREDIT HOUR PRODUCTION FOR FALL QUARTER

FALL QUARTER	LOWER	UPPER	GRADUATE	TOTAL
80/81	116,754	55,650	2,064	174,468
81/82	116,281	58,193	2,266	176,740
82/83	110,597	58,352	2,085	171,034
83/84	106,285	56,200	2,087	164,572
84/85	99,711	57,394	2,080	159,185
85/86	104,502	53,747	2,285	160,534
86/87	107,788	52,205	2,641	162,634
87/88	113,575	53,775	2,723	170,073
88/89	106,499	55,915	2,751	165,165
89/90	102,483	57,181	2,968	162,632
90/91	107,185	54,647	3,054	164,886
91/92	105,601	61,178	2,737	169,516

Source: Student Credit Hour Production - Total College
FACL2425-1 Fall Quarter Report

GRADE DISTRIBUTION REPORT

FALL 1991-1992

<u>COLLEGE</u>	A	B	C	D	F	I	W/D	TOTAL
ALLIED HEALTH SCIENCES	860	930	370	52	27	81	61	2,383
%	36.1%	39.0%	15.5%	2.2%	1.1%	3.4%	2.6%	
Audit - 2								
ARTS & SCIENCES	4,700	6,724	5,977	2,203	1,251	225	2,023	23,512
%	20.0%	28.6%	25.4%	9.4%	5.3%	1.0%	8.6%	
Audit - 7								
Credit - 372								
No Credit - 30								
BUSINESS	2,031	3,717	2,899	768	354	71	702	10,937
%	18.6%	34.0%	26.5%	7.0%	3.2%	0.6%	6.4%	
Audit - 4								
Credit - 387								
No Credit - 4								
EDUCATION	1,395	1,117	325	70	61	69	178	3,233
%	43.1%	34.5%	10.1%	2.2%	1.9%	2.1%	5.5%	
Audit - 1								
Credit - 2								
In Progress - 15								
OPTOMETRY	269	183	80	14	4	6	6	682
%	39.4%	26.8%	11.7%	2.1%	0.6%	0.9%	0.9%	
Credit - 30								
In Progress - 90								
PHARMACY	353	645	564	189	96	52	37	1,936
%	18.2%	33.3%	29.1%	9.8%	5.0%	2.7%	1.9%	
TECHNOLOGY	1,299	1,819	975	283	129	37	170	4,719
%	27.5%	38.5%	20.7%	6.0%	2.7%	0.8%	3.6%	
Credit - 7								
GRAND TOTAL	10,907	15,135	11,190	3,579	1,922	541	3,177	47,402
%	23.0%	31.9%	23.6%	7.6%	4.1%	1.1%	6.7%	
Audit - 14								
Credit - 798								
In Progress - 105								
No Credit - 34								

Source: Grad1400, Fall 91-92

Degrees

DEGREES CONFERRED BY PROGRAM ACADEMIC YEAR (SUMMER QUARTER - SPRING QUARTER)

	1987-88			1988-89			1989-90			1990-91		
	AS	BS	MS	AS	BS	MS	AS	BS	MS	AS	BS	MS
ALLIED HEALTH SCI												
DENTAL												
Dental Assisting	13			12			3			6		
Dental Hygiene	50			56			48			53		
Dental Technician	24			20			16			14		
TOTAL	87			88			67			73		
HEALTH SYSTEMS MGMT												
Environmental Health Tech		1			3			1			3	
Ind & Env Health Mgmt		26			17			26			37	
Occupational Safety/Health		1			1							
Health System Mgmt		<u>25</u>			<u>20</u>			<u>20</u>			<u>27</u>	
TOTAL		53			41			47			67	
HOSPITAL RELATED												
Medical Lab Tech	8			10			9			6		
Medical Record Tech	22			18			48			31		
Nuclear Med Tech	9			11			17			17		
Radiography	54			39			42			35		
Respiratory Care	5			6			6			8		
Medical Records Adm		29			23			29			26	
Medical Tech		6			17			9			13	
Nuclear Medicine		<u>6</u>			<u>6</u>			<u>10</u>			<u>12</u>	
TOTAL	98	41		84	46		122	48		97	51	
NURSING												
Nursing	<u>18</u>	<u>34</u>		<u>17</u>	<u>53</u>		<u>13</u>	<u>75</u>		<u>14</u>	<u>32</u>	
TOTAL	18	34		17	53		13	75		14	32	
EXTERNAL DEGREE												
External Deg Env Hlth		1										
Ext Deg Env Sys Mgmt		<u>1</u>										
TOTAL		2										
COLLEGE TOTAL	203	130		189	141		202	170		184	150	

DEGREES

DEGREES CONFERRED BY PROGRAM ACADEMIC YEAR (SUMMER QUARTER - SPRING QUARTER)

	1987-88			1988-89			1989-90			1990-91		
	AS	BS	MS	AS	BS	MS	AS	BS	MS	AS	BS	MS
ARTS & SCIENCES												
BIOLOGY												
Ornamental Horticulture	7			13			10			7		
Applied Biology		29			28			32			25	
Biotechnology								3			3	
TOTAL	7	29		13	28		10	35		7	28	
PHYSICAL SCIENCES												
Industrial Chem Tech	6			11			19			14		
TOTAL	6			11			19			14		
MATHEMATICS												
Applied Math		5			6			3			3	
TOTAL		5			6			3			3	
LANG & LIT												
Journalism	14			14			16			10		
Technical Communication		6			4			5			4	
TOTAL	14	6		14	4		16	5		10	4	
SOCIAL SCIENCES												
Child Development	9											
Social Services											1	
Social Work		44			49			54			57	
TOTAL	9	44			49			54			58	

DEGREES

	1987-88			1988-89			1989-90			1990-91		
	AS	BS	MS	AS	BS	MS	AS	BS	MS	AS	BS	MS
ARTS & SCIENCES												
GENERAL STUDIES												
Pre-Arts	37			39			43			51		
Pre-Dentistry							1			2		
Pre-Engineering	4			2			4			4		
Pre-Law	5			3			12			6		
Pre-Medicine	3						1			4		
Pre-Mort Science	2			1			1			4		
Pre-Optometry	8			7			13			7		
Pre-Pharmacy	27			25			30			29		
Pre-Science	11			6			13			5		
Pre-Teach (Elementary)	8			16			17			10		
Pre-Teach (Secondary)	2			5			5			10		
Pre-Veterinary	1						2					
General Studies	10			5			6			4		
TOTAL	118			109			148			136		
COLLEGE TOTAL	154	84		147	87		193	97		167	93	

DEGREES

DEGREES CONFERRED BY PROGRAM
ACADEMIC YEAR (SUMMER QUARTER - SPRING QUARTER)

	1987-88			1988-89			1989-90			1990-91		
	AS	BS	MS	AS	BS	MS	AS	BS	MS	AS	BS	MS
BUSINESS												
ACCOUNTANCY												
Accountancy		75			87			69			71	
Accountancy/Masters			3			5			2			5
TOTAL		<u>75</u>	<u>3</u>		<u>87</u>	<u>5</u>		<u>69</u>	<u>2</u>		<u>71</u>	<u>5</u>
COMPUTER INFO SYS												
Computer Info Systems		108			103			67			54	
CIS Management									1			3
TOTAL		<u>108</u>			<u>103</u>	<u>1</u>		<u>67</u>	<u>1</u>		<u>54</u>	<u>3</u>
MANAGEMENT												
Legal Assistant	29			23			18			20		
Real Estate	14			21			14			16		
Business Administration		170			165			201			204	
Business Economics		1			3			6			2	
Finance		26			31			22			28	
Insurance		15			12			18			20	
Insurance/Real Estate					3			3			5	
International Business		15			14			8			9	
Management		65			57			69			55	
Personnel Mgt/Ind Rel		17			18			20			16	
Production Management		19			17			30			25	
Quantitative Business		2			3			2			3	
Real Estate		2										
Small Business Mgt		<u>10</u>			<u>11</u>			<u>19</u>			<u>13</u>	
TOTAL	<u>43</u>	<u>342</u>		<u>44</u>	<u>334</u>		<u>32</u>	<u>398</u>		<u>36</u>	<u>380</u>	
Real Estate (Certificate)	2			1			5			7		

	1987-88			1988-89			1989-90			1990-91		
	AS	BS	MS	AS	BS	MS	AS	BS	MS	AS	BS	MS
BUSINESS												
MARKETING												
Advertising		37			22			46			54	
Advertising/Public Relations		17			9			7				
Commercial Art	25											
Food Service Mgt	34			36			48			56		
Hospitality Management		22			18			23			26	
Marketing		53			46			49			44	
Marketing/PGM		38			49			61			66	
Marketing/PTM					8			12			4	
Marketing/Retail		15			19			20			23	
Mktg/Ret Fash Merch	32			19			21			24		
Marketing/Sales		48			45			57			53	
Public Relations											12	
Visual Communication				27			19	11		20	17	
TOTAL	91	230		82	216		88	286		100	299	
OFFICE ADMIN												
Court/Freelance Reporting	10			6			16			13		
Office Adm/Adm Assistant	22			18			25			14		
Off Adm/Exec Secretary	17			11			7			6		
Off Adm/Legal Secretary	5			8			6			4		
Office Administration		15			17			9				
TOTAL	54	15		43	17		54	9		37		
Office Automated Systems Accelerated Program								2			9	
Diversified Business	24			15			22			26		
TOTAL	24			15			22	2		26	9	
COLLEGE TOTAL	212	770	3	184	757	6	196	831	3	199	813	8
CERTIFICATES												
Real Estate	2			1			5			7		

DEGREES

DEGREES CONFERRED BY PROGRAM ACADEMIC YEAR (SUMMER QUARTER - SPRING QUARTER)

	1987-88			1988-89			1989-90			1990-91		
	AS	BS	MS	AS	BS	MS	AS	BS	MS	AS	BS	MS
EDUCATION												
TEACHER EDUCATION												
Allied Health Education		12			18			10			10	
Business Education		19			18			26			25	
Comm School Education								1				
Mathematics Education		3			4			5			5	
Science Education		5			6			16			15	
Technical Education		21			18			26			23	
Training Bus & Industry					1			1			1	
Wage Earn Home Econ								4				
Occupational Education			17			26			24			23
TOTAL		60	17		65	26		89	24		79	23
TELEVISION PROD												
Audiovisual Production	17			22			24			23		
TV Production		32			26			28			37	
TOTAL	17	32		22	26		24	28		23	37	
LEISURE STUDIES												
Rec Leadership & Mgt		9			11			13			16	
TOTAL		9			11			13			16	
CRIMINAL JUSTICE												
Criminal Justice		90			105			103			95	
TOTAL		90			105			103			95	
CHILD DEVELOPMENT												
Child Development		9			31			32			40	
TOTAL		9			31			32			40	
COLLEGE TOTAL	26	191	17	53	207	26	56	233	24	63	227	23

DEGREES CONFERRED BY PROGRAM ACADEMIC YEAR (SUMMER QUARTER - SPRING QUARTER)

	1987-88			1988-89			1989-90			1990-91		
	AS	BS	OD	AS	BS	OD	AS	BS	OD	AS	BS	OD
OPTOMETRY												
Vision Science		14			18			21			30	
Doctor Optometry			35			30			33			33
Optometric Tech	8			16			7			12		
Opticianry	12			16			18			9		
COLLEGE TOTAL	20	14	35	32	18	30	25	21	33	21	30	33

DEGREES CONFERRED BY PROGRAM ACADEMIC YEAR (SUMMER QUARTER - SPRING QUARTER)

	1987-88			1988-89			1989-90			1990-91		
	AS	BS	MS	AS	BS	MS	AS	BS	MS	AS	BS	MS
PHARMACY												
Pharmacy		113			110			127			104	
COLLEGE TOTAL		113			110			127			104	

DEGREES

DEGREES CONFERRED BY PROGRAM ACADEMIC YEAR (SUMMER QUARTER - SPRING QUARTER)

	1987-88			1988-89			1989-90			1990-91		
	AS	BS	MS	AS	BS	MS	AS	BS	MS	AS	BS	MS
TECHNOLOGY												
AUTOMOTIVE												
Auto Machine Tech	9			17			12			8		
Auto Service Tech	64			66			64			64		
Automotive Body	16			24			15			23		
Heavy Duty Eng Tech	5			5			4			1		
Heavy Equipment Serv	37			34			35			26		
Auto & Heavy Equip Mgt		64			78			59			53	
TOTAL	131	64		146	78		130	59		122	53	
Auto Mach Tech (Certificate)				1								
CONSTRUCTION												
Aerial Mapping Tech	3			4			4			2		
Architectural Tech	35			29			27			45		
Building Const Tech	20			21			34			26		
Construction Eng Tech	7			6			9			4		
Heating Refg & Air Cond	24			32			44			42		
Surveying Tech	2			6			4			1		
Facilities Management											7	
HVACR Eng Tech											16	
Construction Management		26			30			24			13	
Energy Management		5			11			11			1	
Surveying		9			10			15			12	
TOTAL	91	40		98	51		122	50		120	49	
ELECT/ELECTRONICS												
Avionics Tech	4			1			8			1		
Broadcast Elect Tech											1	
Electrical Power Tech	4											
Industrial Elect Tech	35			36			30			32		
Radio & TV Serv							2					
Electrical/Electronics Eng		26			28			21			20	
TOTAL	43	26		37	28		40	21		33	21	

	1987-88			1988-89			1989-90			1990-91		
	AS	BS	MS	AS	BS	MS	AS	BS	MS	AS	BS	MS
TECHNOLOGY												
COMP AIDED DESIGN*												
Cosmetology	1			1			1					
Mechanical Eng Tech	13			8								
Tech Drafting/Tool Design	29			28			6			2		
Tech Illustration	<u>25</u>			<u>16</u>			—			—		
TOTAL	68			53			7			2		
GRAPHIC ARTS												
Printing Tech	35			30			58			54		
Printing Management	—	<u>26</u>		—	<u>23</u>		—	<u>30</u>		—	<u>19</u>	
TOTAL	35	26		30	23		58	30		54	19	
Graphic Reproduction (Certificate)										1		
INDUSTRIAL*												
Comp Numerical Control	3			2			1			1		
Mach Tool Technology	29			23			25			1		
Plastics Technology	12			21			59			44		
Welding Technology	13			25			18			17		
Manufacturing Tech											2	
Mfg Tooling Tech										21		
Manufacturing Eng Tech		32		24			23				29	
Plastics Engineering Tech	1	23		25			36				42	
Product Design Eng Tech							14				14	
Welding Eng Technology		8		10			9				16	
Mech Eng Technology							15			8		
Tech Draft/Tool Design							1			32		
Technical Illustration	—	—		—	—		<u>29</u>	—		<u>18</u>	—	
TOTAL	58	63		71	59		148	82		142	103	
Mfg Tooling Tech (Certificate)										1		
COLLEGE TOTAL												
	425	219		435	239		505	242		473	245	

*(NOTE: Industrial and CAD were combined to create a new dept, Manufacturing Engineering Technology in 1990-91)

CERTIFICATES

Auto Machine Tech	1		
Graphic Reproduction			1
Manufacturing Tooling Tech			1

Source: REGR2456, Report for Year End

DEGREES

SUMMARY DEGREES CONFERRED AT FERRIS STATE UNIVERSITY

ACADEMIC YEAR (SUMMER QUARTER - SPRING QUARTER)

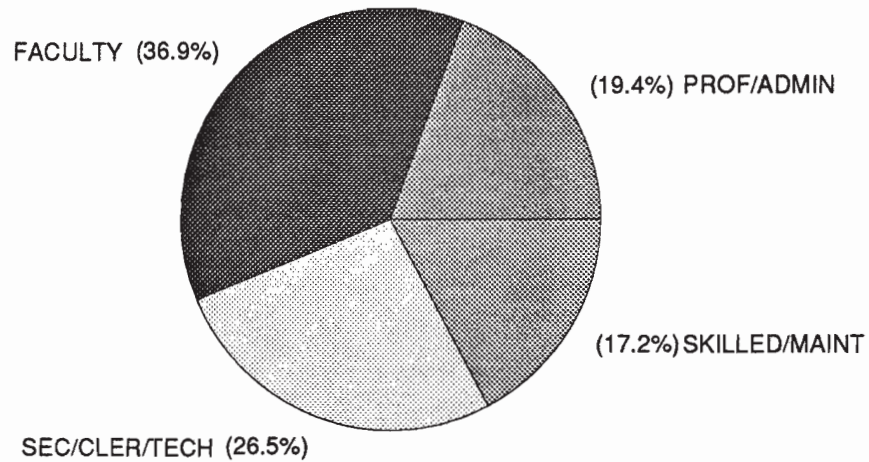
	CERTIFICATE	ASSOCIATE	BACHELOR	MASTERS	DOCTORATE
1986-1987	5	1,119	1,514	15	30
1987-1988	3	1,040	1,521	20	35
1988-1989	2	1,040	1,559	32	30
1989-1990	6	1,177	1,721	27	33
1990-1991	9	1,107	1,662	31	33

Source: REGR 2456

Faculty/Staff

**FULL-TIME
UNIVERSITY STAFF BY JOB CATEGORY AND SEX**

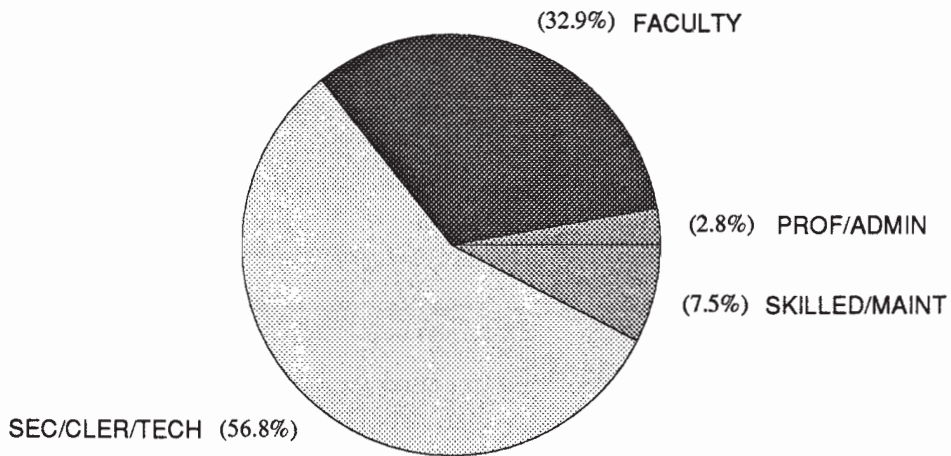
JOB CATEGORY	MALE		FEMALE		TOTAL	
	NUMBER	PERCENT	NUMBER	PERCENT	NUMBER	PERCENT
Professional/ Administrative	191	68.0%	90	32.0%	281	19.4%
Faculty	400	74.9%	134	25.1%	534	36.9%
Secretarial/ Clerical/Tech	70	18.3%	313	81.7%	383	26.5%
Skilled Craft/ Maintenance	143	57.4%	106	42.6%	249	17.2%
TOTAL	804	55.6%	643	44.4%	1,447	100.0%



FACULTY/STAFF

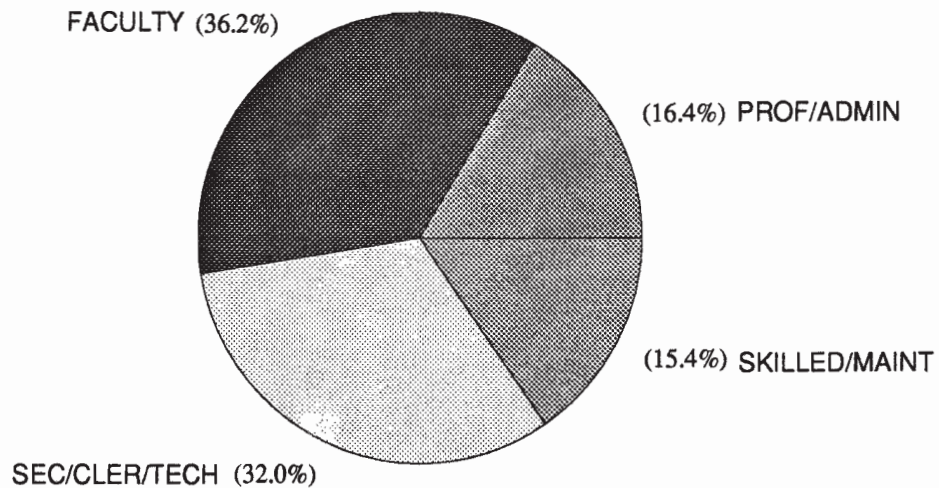
PART-TIME UNIVERSITY STAFF BY JOB CATEGORY AND SEX

JOB CATEGORY	MALE		FEMALE		TOTAL	
	NUMBER	PERCENT	NUMBER	PERCENT	NUMBER	PERCENT
Professional/ Administrative	3	33.3%	6	66.7%	9	2.8%
Faculty	47	44.3%	59	55.7%	106	32.9%
Secretarial/ Clerical/Tech	31	16.9%	152	83.1%	183	56.8%
Skilled Craft/ Maintenance	13	54.2%	11	45.8%	24	7.5%
TOTAL	94	29.2%	228	70.8%	322	100.0%



**TOTAL
UNIVERSITY STAFF BY JOB CATEGORY AND SEX**

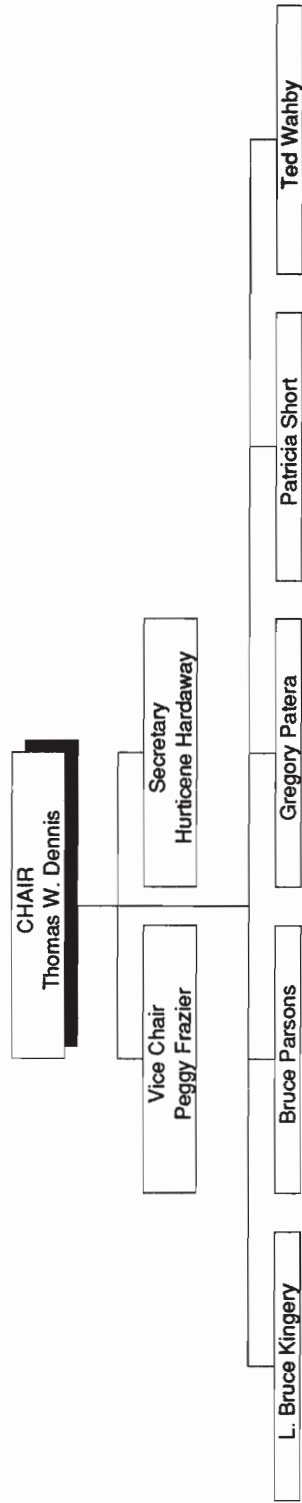
JOB CATEGORY	MALE		FEMALE		TOTAL	
	NUMBER	PERCENT	NUMBER	PERCENT	NUMBER	PERCENT
Professional/ Administrative	194	66.9%	96	33.1%	290	16.4%
Faculty	447	69.8%	193	30.2%	640	36.2%
Secretarial/ Clerical/Tech	101	17.8%	465	82.2%	566	32.0%
Skilled Craft/ Maintenance	156	57.1%	117	42.9%	273	15.4%
TOTAL	898	50.8%	871	49.2%	1,769	100.0%



Source: Ferris State University FY-91, EEO-6 Report
Dated 10/23/91

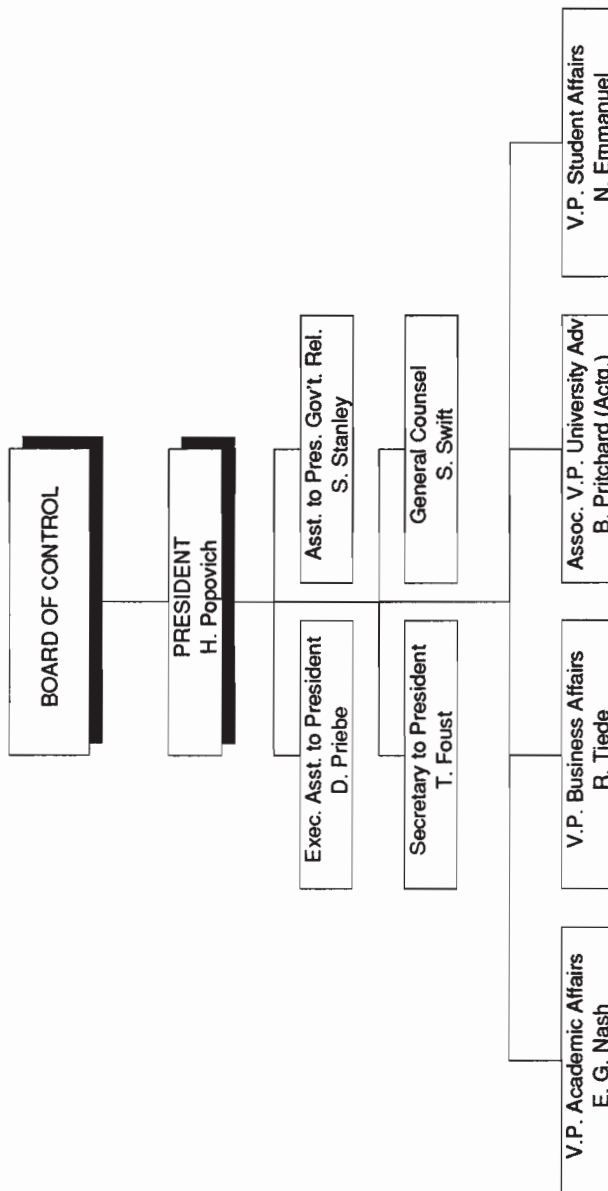
Organizational Charts

**FERRIS STATE UNIVERSITY
BOARD OF CONTROL**

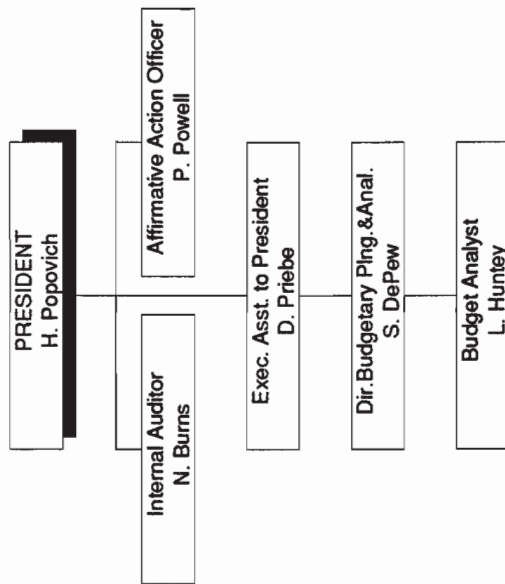


ORGANIZATIONAL CHARTS

FERRIS STATE UNIVERSITY BOARD OF CONTROL/PRESIDENT

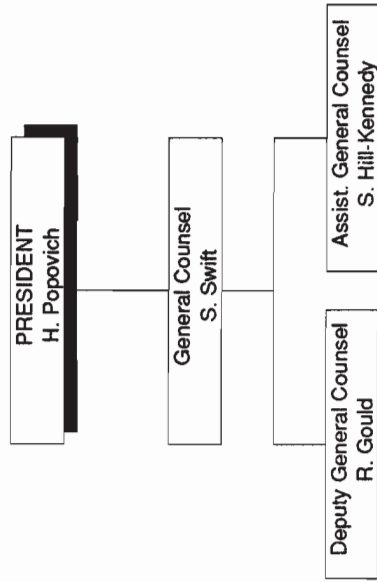


FERRIS STATE UNIVERSITY
PRESIDENT

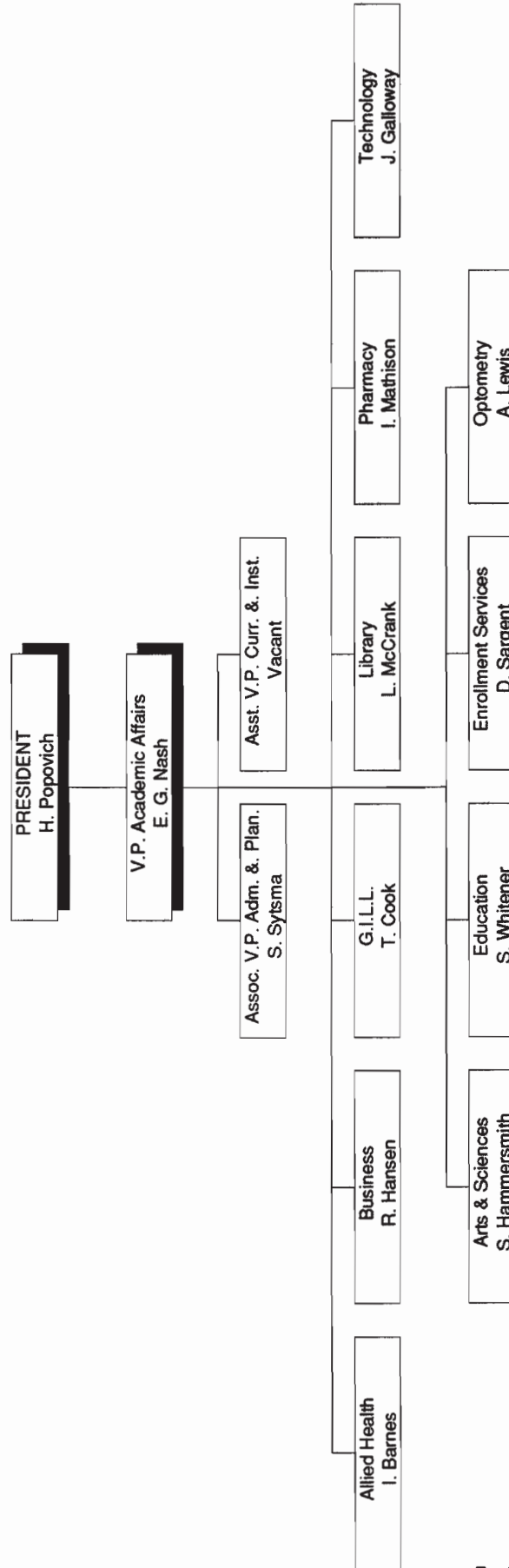


ORGANIZATIONAL CHARTS

FERRIS STATE UNIVERSITY OFFICE OF LEGAL AFFAIRS

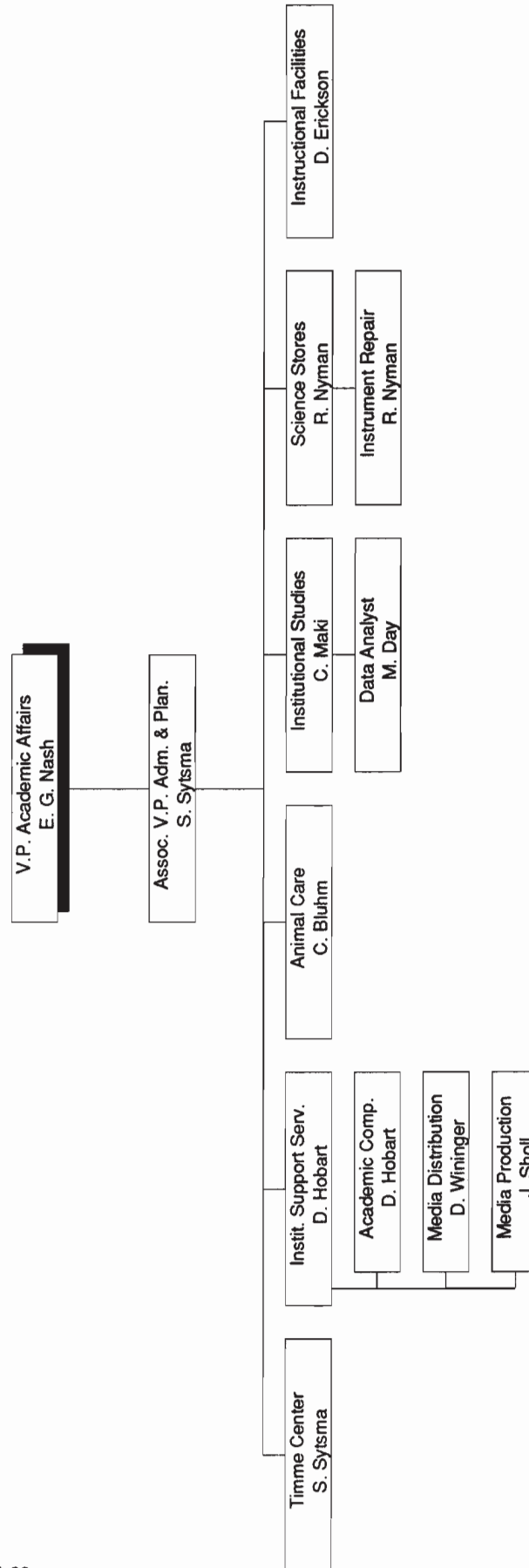


FERRIS STATE UNIVERSITY
ACADEMIC AFFAIRS DIVISION

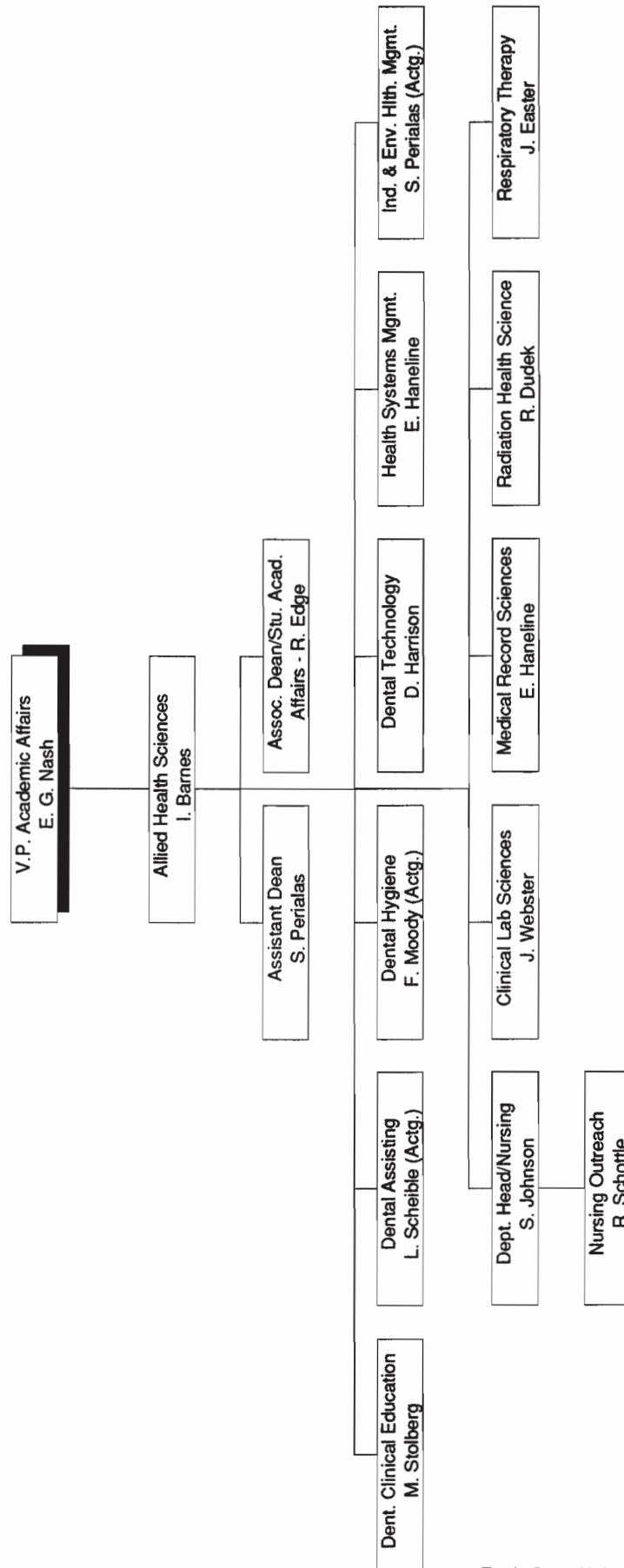


ORGANIZATIONAL CHARTS

FERRIS STATE UNIVERSITY OFFICE OF ACADEMIC AFFAIRS

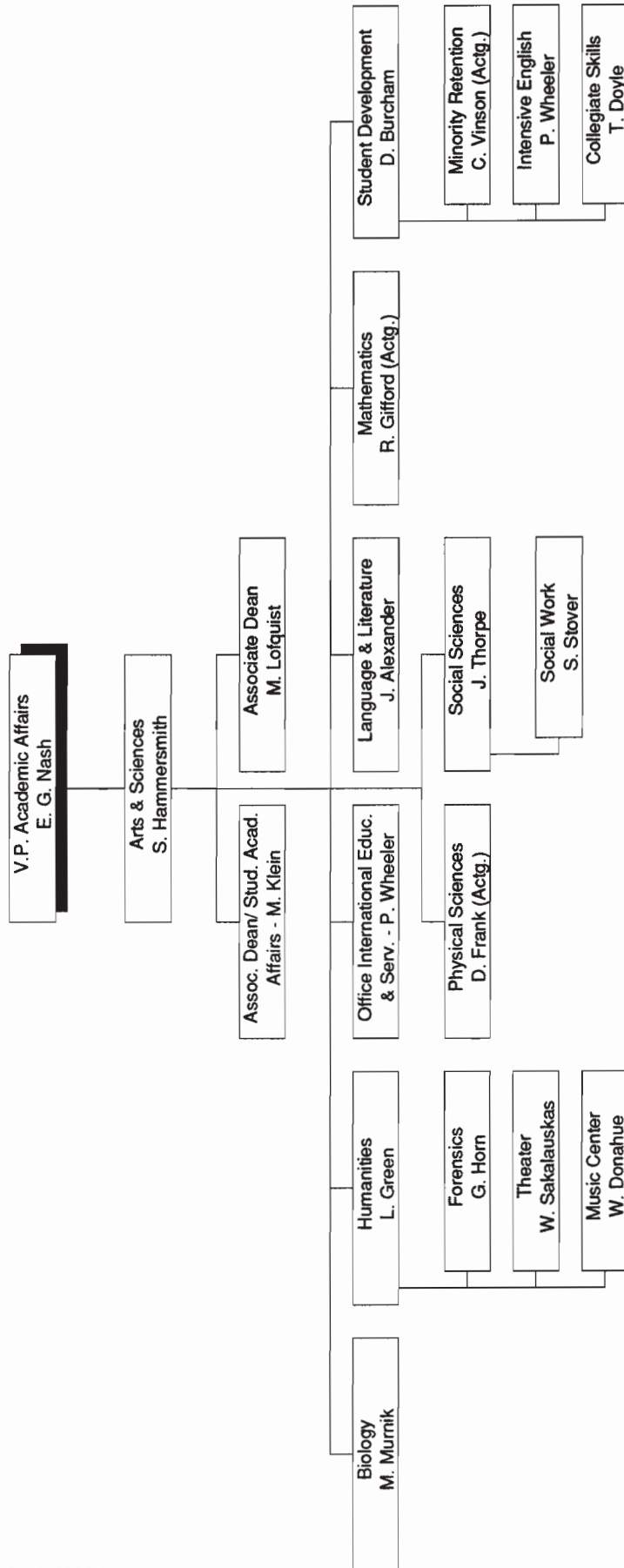


FERRIS STATE UNIVERSITY
ACADEMIC AFFAIRS DIVISION
COLLEGE OF ALLIED HEALTH SCIENCES

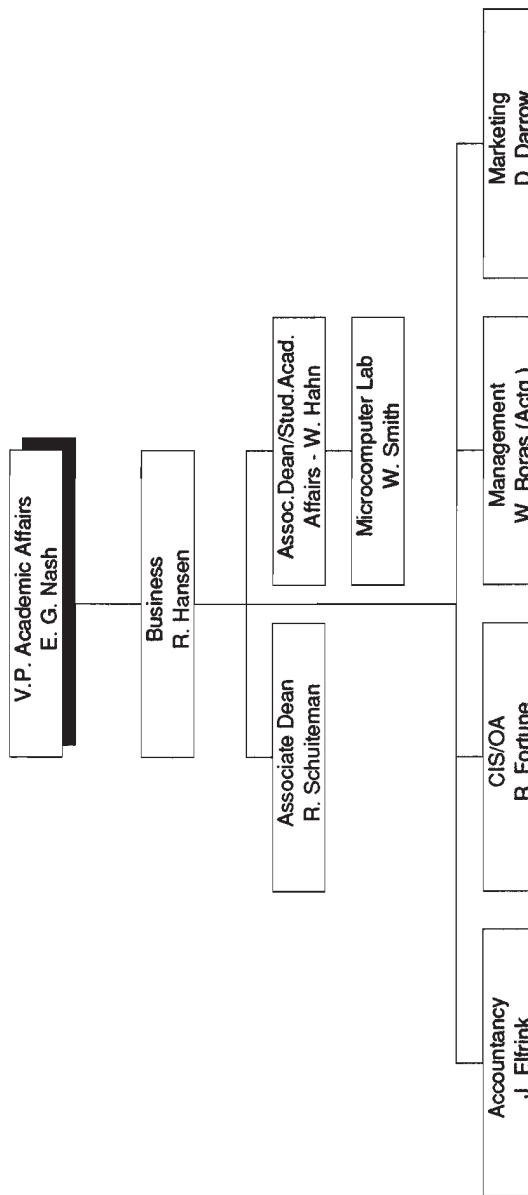


ORGANIZATIONAL CHARTS

FERRIS STATE UNIVERSITY ACADEMIC AFFAIRS DIVISION COLLEGE OF ARTS & SCIENCES

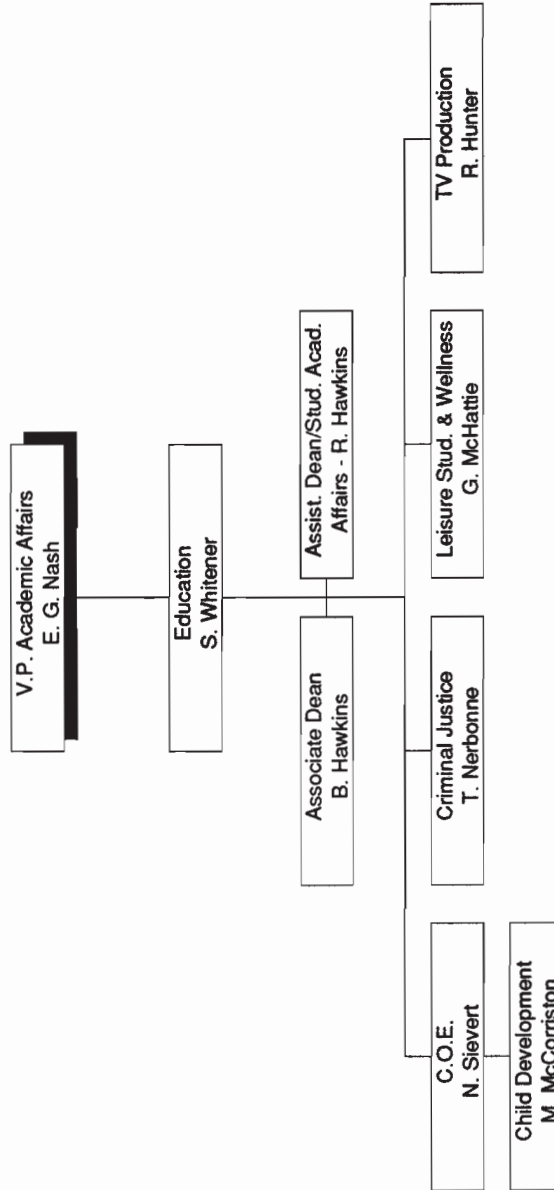


FERRIS STATE UNIVERSITY
ACADEMIC AFFAIRS DIVISION
COLLEGE OF BUSINESS

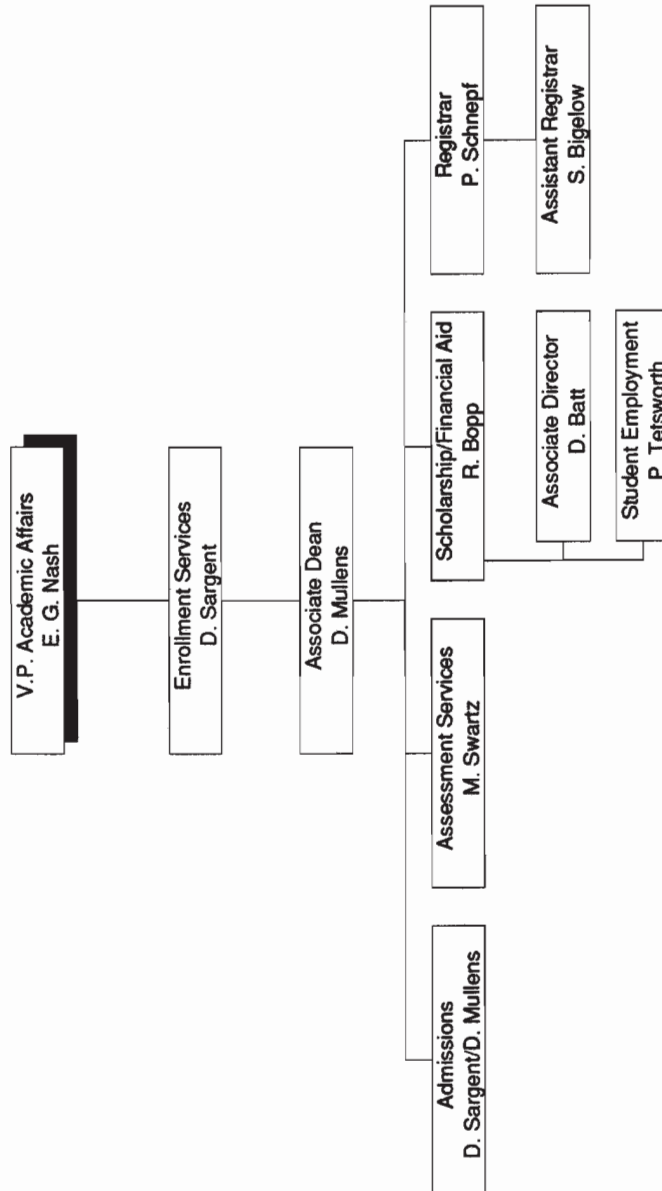


ORGANIZATIONAL CHARTS

FERRIS STATE UNIVERSITY
ACADEMIC AFFAIRS DIVISION
COLLEGE OF EDUCATION

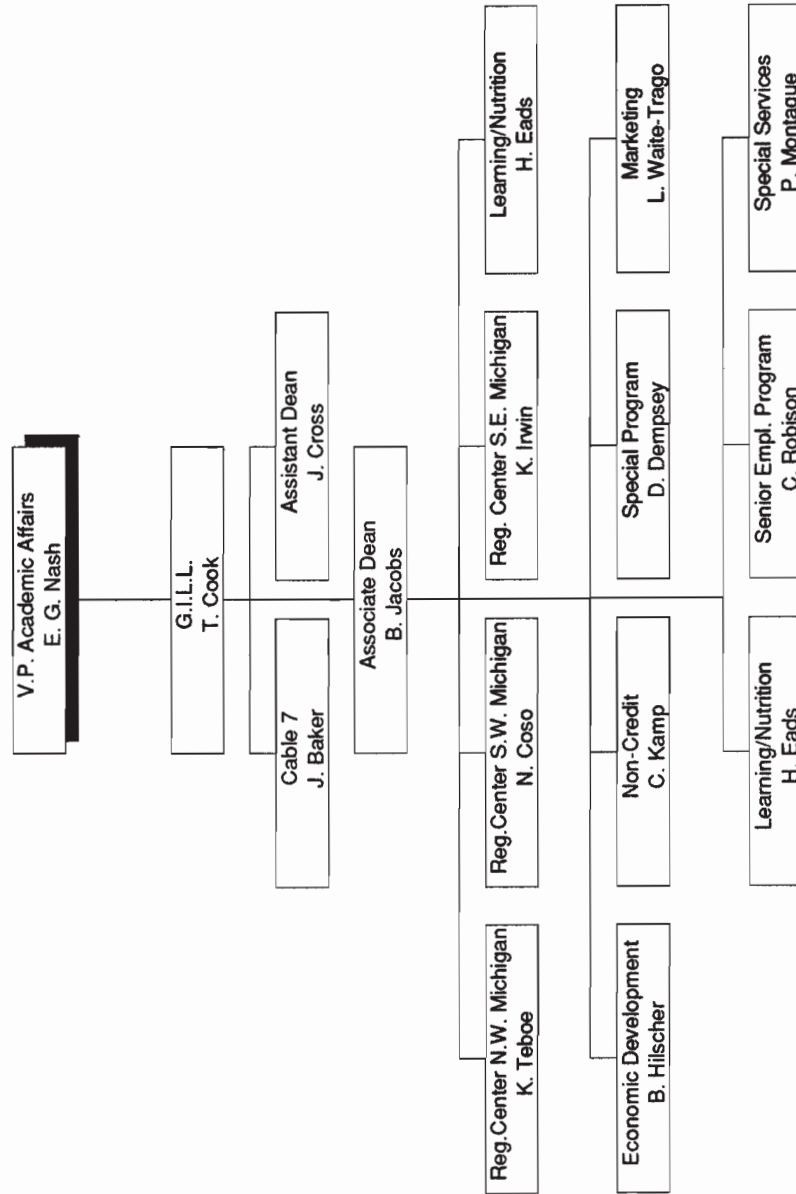


FERRIS STATE UNIVERSITY
ACADEMIC AFFAIRS DIVISION
ENROLLMENT SERVICES

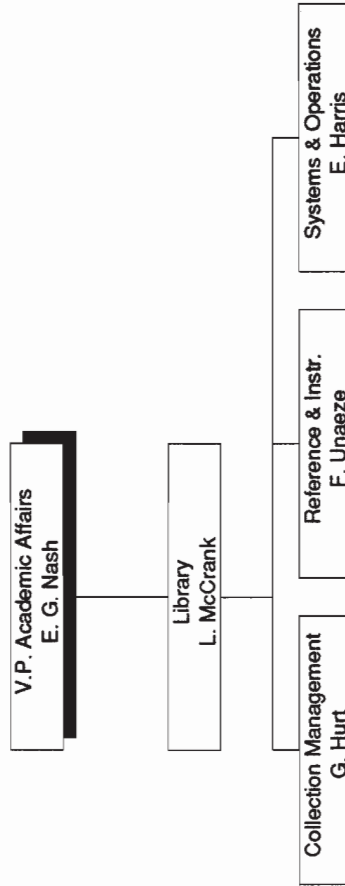


ORGANIZATIONAL CHARTS

FERRIS STATE UNIVERSITY
ACADEMIC AFFAIRS DIVISION
GERHOLZ INSTITUTE FOR LIFELONG LEARNING

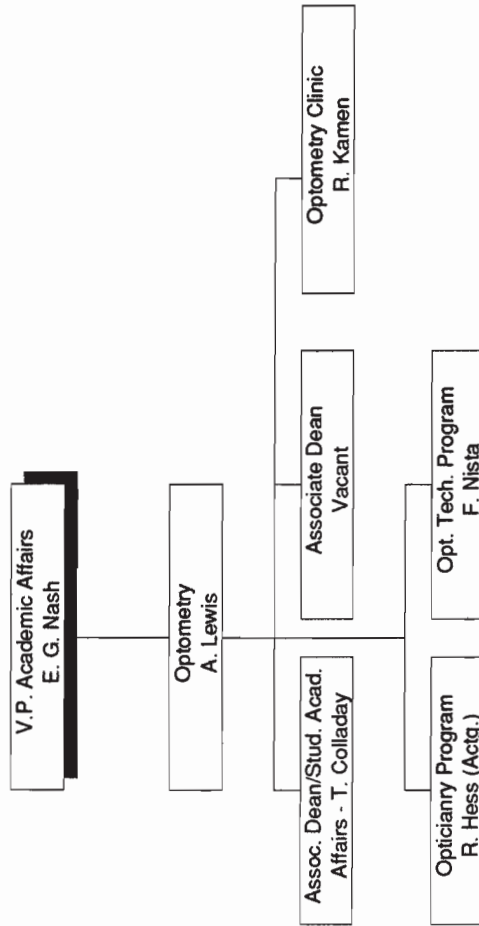


FERRIS STATE UNIVERSITY
ACADEMIC AFFAIRS DIVISION
LIBRARY

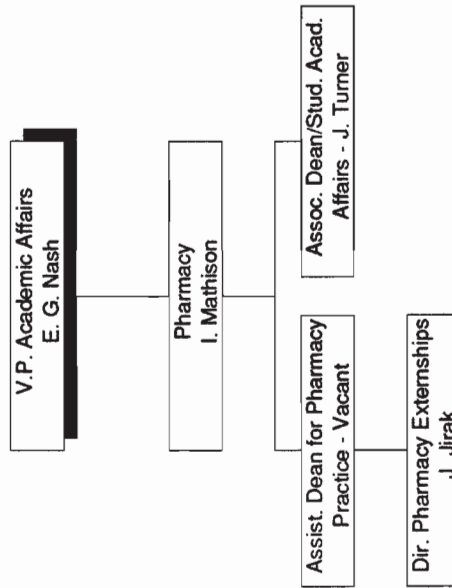


ORGANIZATIONAL CHARTS

FERRIS STATE UNIVERSITY ACADEMIC AFFAIRS DIVISION COLLEGE OF OPTOMETRY

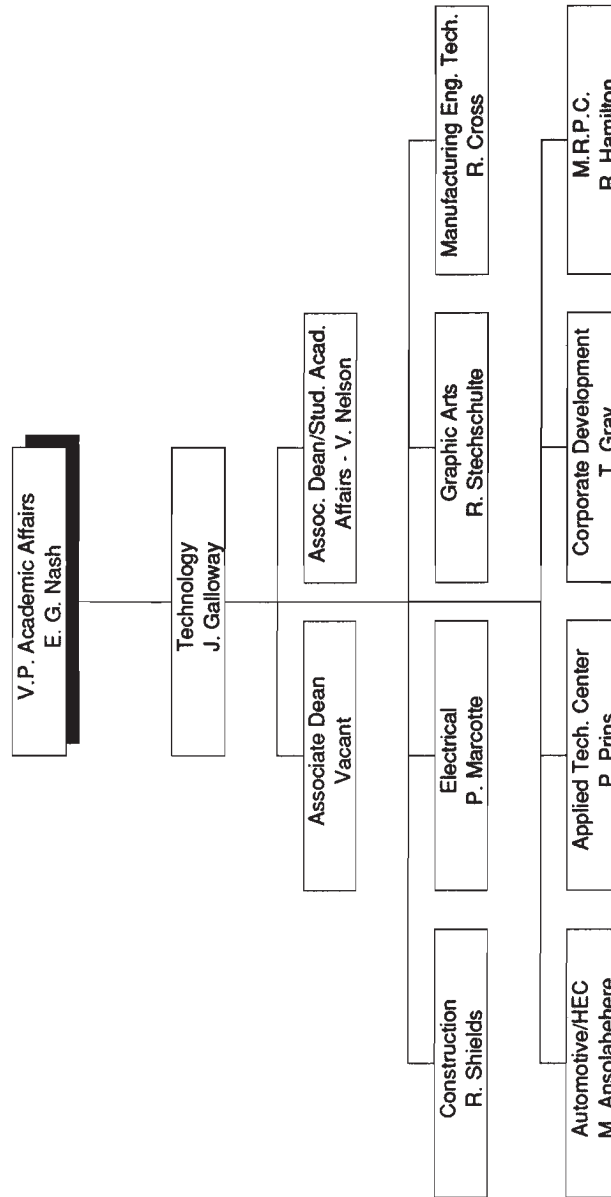


FERRIS STATE UNIVERSITY
ACADEMIC AFFAIRS DIVISION
COLLEGE OF PHARMACY

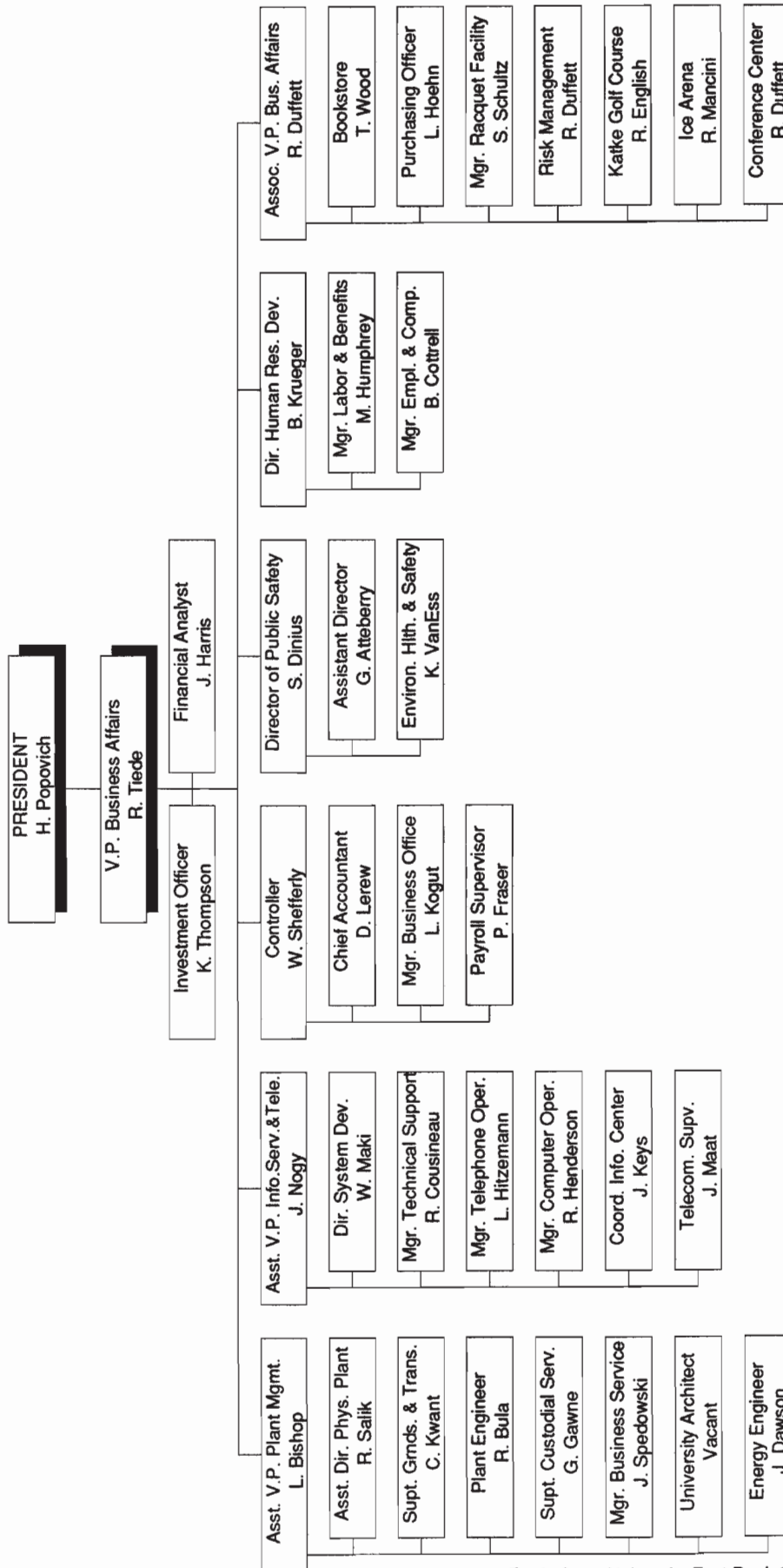


ORGANIZATIONAL CHARTS

FERRIS STATE UNIVERSITY ACADEMIC AFFAIRS DIVISION COLLEGE OF TECHNOLOGY

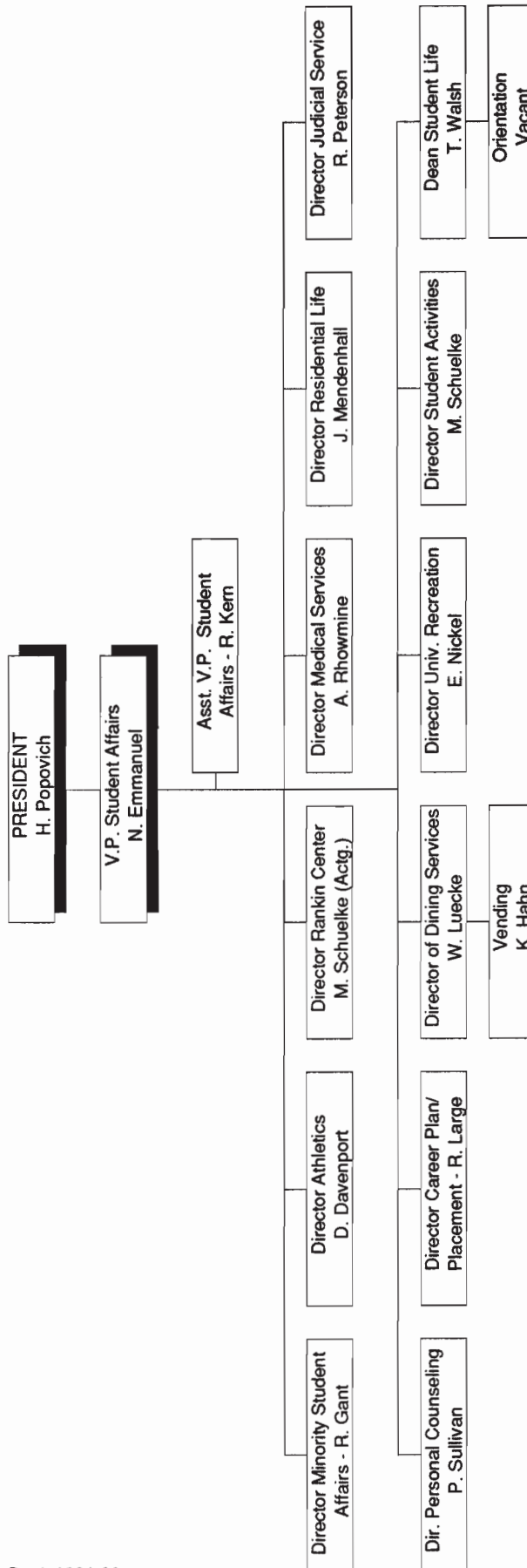


FERRIS STATE UNIVERSITY
BUSINESS AFFAIRS DIVISION

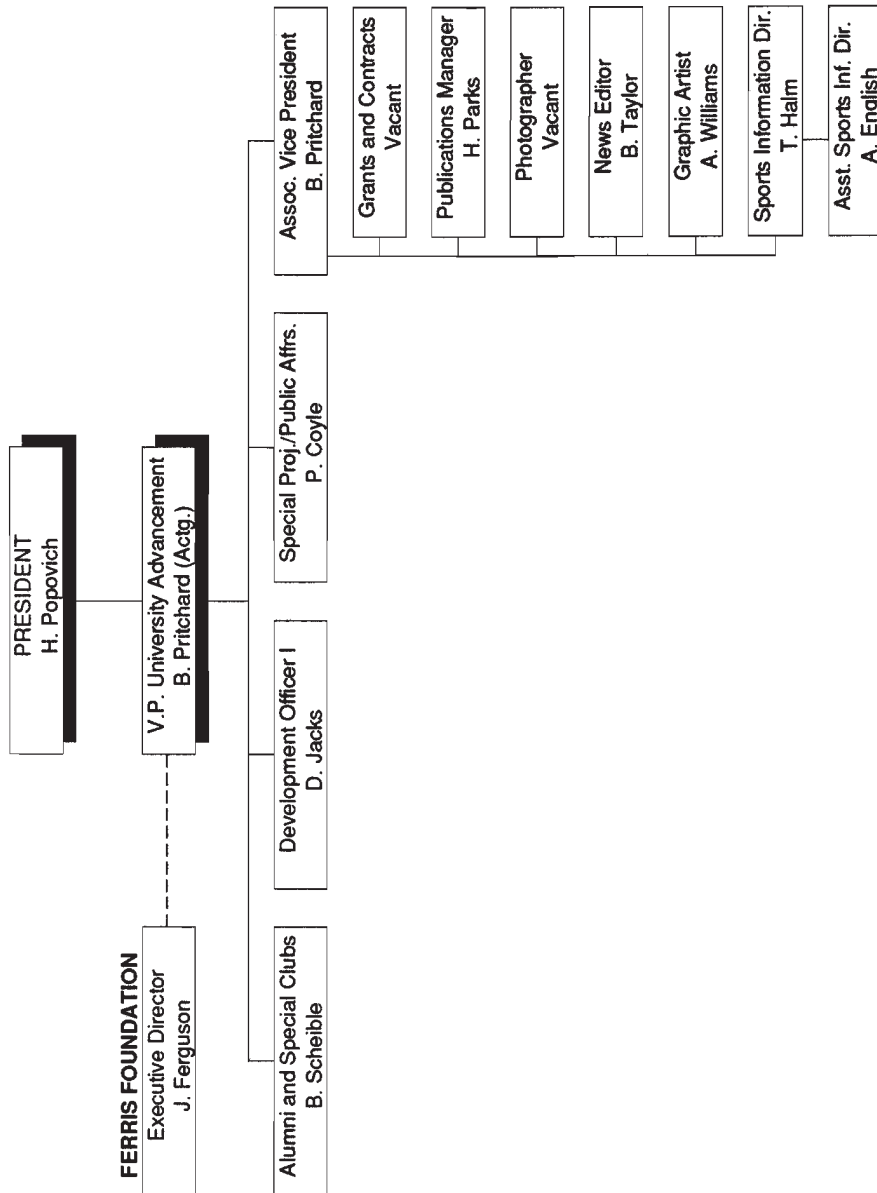


ORGANIZATIONAL CHARTS

FERRIS STATE UNIVERSITY STUDENT AFFAIRS DIVISION

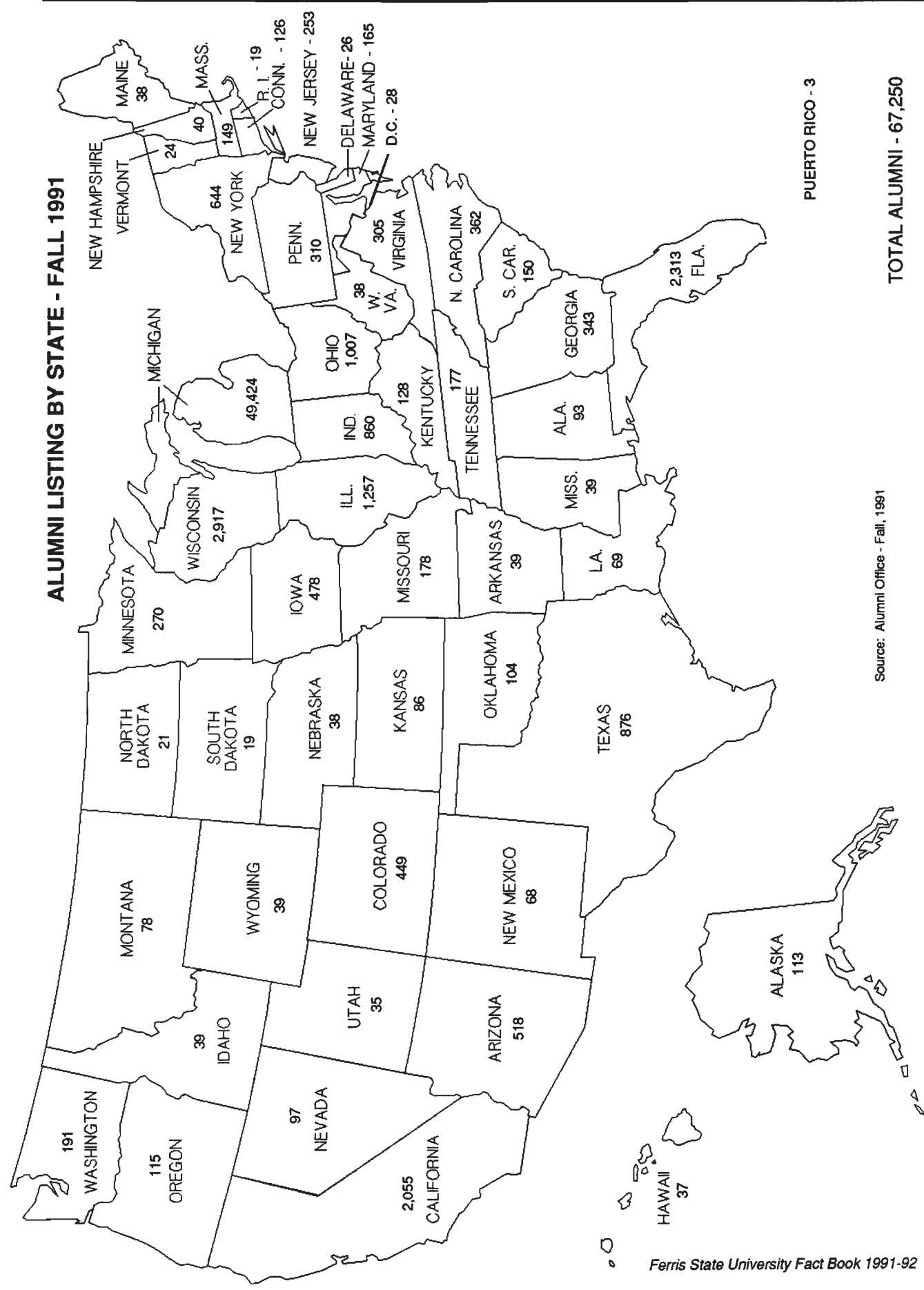


FERRIS STATE UNIVERSITY
UNIVERSITY ADVANCEMENT DIVISION



Alumni

ALUMNI LISTING BY STATE - FALL 1991



Source: Alumni Office - Fall, 1991

PUERTO RICO - 3

TOTAL ALUMNI - 67,250

**FERRIS STATE UNIVERSITY
SUMMARY OF PLACEMENT ACTIVITY FOR 1989-90 GRADUATES**

SCHOOL/DEGREE	EMPLOYED		CONTINUING EDUCATION						Not Seeking Employment		Seeking Employment NO. %	TOTAL RESPONSE NUMBER	UNKNOWN NUMBER	RESPONSE RATE %	TOTAL GRADS NO.		
	Related NO.	Field %	FERRIS		OTHER INSTITUTION		NO.	%	NO.	%							
			Undergrad. NO.	Graduate %	Undergrad. NO.	Graduate %											
ALLIED HEALTH SCI																	
Baccalaureate	118	92.2	3	2.3	0	0.0	0	0.0	0	0.0	0	0.0	0	0.0	128	78.5	163
Associate	126	76.8	0	0.0	29	17.7	0	0.0	5	3.0	0	0.0	4	2.4	164	90.6	181
ARTS & SCIENCES																	
Baccalaureate	49	58.3	8	9.5	2	2.4	3	3.6	0	0.0	13	15.5	1	1.2	84	86.6	97
Associate	20	11.6	6	3.5	112	64.7	2	1.2	26	15.0	2	1.2	1	0.6	173	89.6	193
BUSINESS																	
Masters	1	50.0	0	0.0	0	0.0	0	0.0	0	0.0	0	0.0	0	0.0	2	66.7	3
Baccalaureate	407	61.3	104	15.7	7	1.1	3	0.6	1	0.2	5	0.8	2	0.3	664	79.8	832
Associate	49	27.5	9	5.1	102	57.3	0	0.0	5	2.8	0	0.0	1	0.6	178	90.8	196
EDUCATION																	
Masters	16	88.9	2	11.1	0	0.0	0	0.0	0	0.0	0	0.0	0	0.0	18	75.0	24
Baccalaureate	105	54.7	26	13.5	3	1.6	0	0.0	0	0.0	4	2.1	0	0.0	192	82.8	232
Associate	8	16.0	1	2.0	31	62.0	0	0.0	8	16.0	0	0.0	0	0.0	50	89.3	56
OPTOMETRY																	
O.D.	21	100.0	0	0.0	0	0.0	0	0.0	0	0.0	0	0.0	0	0.0	21	63.6	33
Baccalaureate	0	0.0	0	0.0	0	0.0	21	100.0	0	0.0	0	0.0	0	0.0	21	100.0	21
Associate	10	41.7	0	0.0	13	54.2	0	0.0	1	4.2	0	0.0	0	0.0	24	96.0	25
PHARMACY																	
Baccalaureate	82	96.5	0	0.0	0	0.0	3	3.5	0	0.0	0	0.0	0	0.0	85	69.7	122
TECHNOLOGY																	
Baccalaureate	190	90.0	5	2.4	2	0.9	0	0.0	0	0.0	2	0.9	0	0.0	211	86.8	243
Associate	133	30.6	14	3.2	262	60.4	0	0.0	11	2.5	0	0.0	2	0.5	434	86.5	502
TOTAL/AVG. % Placement for 88-89 Graduates	1,335	54.5	178	7.3	563	23.0	32	1.3	57	2.3	26	1.1	7	0.3	2,449	83.8	2,923
	1,271	58.5	161	7.4	463	21.3	26	1.2	44	2.0	17	0.8	19	0.9	2,173	81.6	2,663

Source: 1989-1990 Graduates and Their Beginning Salaries
Career Planning and Placement Services

RECIPIENTS OF ALUMNI AWARDS

Since 1956, Commencement week activities have included the presentation by the Ferris State University Alumni Association of Distinguished Alumni Awards recognizing exceptional career success and noteworthy fidelity and devotion to the University. Distinguished Alumni Award recipients are:

1956
Frederick L. Caldena
Ralph Pino
Nate S. Shapero

1957
Walter R. Braund
Jean DeBoer
Edward M. Sharpe

1958
C. V. Burnett
John H. Butts
Ray M. Hardy
Maurice C. LaClaire
Charles W. Martin
Fred B. Post
W. C. Taggart
Robert H. Wisner

1959
Howard C. Grimes
James T. Jones
Willard J. Nash
Arthur R. Sherk

1960
Manley M. Ellis
Thomas F. Heatley
Thaddeus B. Taylor

1961
C. V. Buttleman
Merta L. Reed
Gideon E. Smith

1962
Walter Armbruster
Joseph C. Hirschfield
Hattie Smith Lear Baribeau

1963
Clare F. Jarecki
Charles S. Neithercut
John W. Tenny

1964
Bess Rose Fishman
Lewie H. Hull
J. Arthur Pino

1965
Leo F. Duggan
C. Gordon Phillips
George C. Quinnell

1966
L. Dale Faunce
Carlton H. Runcieman

1967
Albert F. Cleveland
Roy A. Darling
James C. Finney, Sr.
Willard J. Nash

1968
Norman E. Borgerson
Ann W. Sawasky
Reuben E. Trippensee

1969
Carroll Boutell
Elmon Cataline

1970
Charles E. Fairman
Ethel Taylor Pierce
John Stahlin

1971
Stanley J. Byington
Gerald McKessy
Raymond Sines

1972
Clarence Freeman
Delbert Long
Ramsay Wardrop

1973
Bert C. Brennan
Albert B. Doherty, III
John W. Spicer
Fred A. Westerman

1974
Frank Curtis
Phillip Runkel
Colin Smith

1975
Rex O. Graff
Fred Schnarr
Chester I. Williams

1976
S. John Byington
Gerald L. DeHaan
Clare G. Johnson
H. James Renaud

1977
James R. Hess
Florence I. Holden
Robert J. Norsworthy

1978
Ruth Gibson Butler
Leonard W. Gopp
Robert C. Redman

1979
Peggy A. Frazier
Thomas P. Scholler
Lee A. Westberg

1980
E. Elaine Davies
Kuno Hammerberg
John F. Mangrum

1981
Alvin L. Burrige
Floyd E. Curtis
Avis J. Ericson

1982
Howard L. Dell
Jack M. Newcomb
Rena D. Westra

1983
Douglas W. Call
Darnell E. Cole
Margaret Ethel Denise
Elton "Ott" Gingrich

1984
Richard C. Andresen
Edmund D. Farhat
Kenneth J. Hicks

1985
Jean D. Deupree
Arnold L. Johnson
Bruce N. Parsons

1986
Richard L. Antonini
Bertil G. Carlson
Kenneth L. Cook
Jack D. Lewis

1987
Maurice Q. Bectel
Roger W. Anderson
H. Kearney Walters

1988
Marjorie L. Fleming
George H. Ryan, Sr.
Gordon E. Kamstra
Charles E. Lippert

1989
Albert J. Coudron
Kenneth W. Kirk
George J. Menoutes
Jerry R. Tubbs

1990
Philip E. Hoffman
Dennis B. Lerner
Roger G. Stoll
Clinton L. Swinehart

1991
Darroll Z. Howard
Jane Reagan Jones
Kenneth E. McCourt

Budget

**FERRIS STATE UNIVERSITY
FY-92 GENERAL FUND OPERATING BUDGET
(AMOUNTS IN THOUSANDS)**

REVENUES	FY-92 OPERATING BUDGET
STATE APPROPRIATIONS	\$40,920
TUITION/FEES	32,192
INVESTMENT INCOME	700
OTHER INCOME	440
	\$74,252
TOTAL REVENUES	\$74,252
CARRYOVER	2,318
	\$76,570
AVAILABLE FOR ALLOCATION	\$76,570
EXPENDITURES	
SALARY/WAGE/BENEFIT	\$60,030
SUPPLY/EXPENSE	10,319
UTILITIES	1,928
STUDENT ASSISTANCE	1,779
EQUIPMENT	591
DESIGNATED PROGRAMS	872
BUDGET INITIATIVES	60
OFF CAMPUS PROGRAMS	532
	\$76,111
TOTAL EXPENDITURES	\$76,111
CONTINGENCY RESERVE	\$459

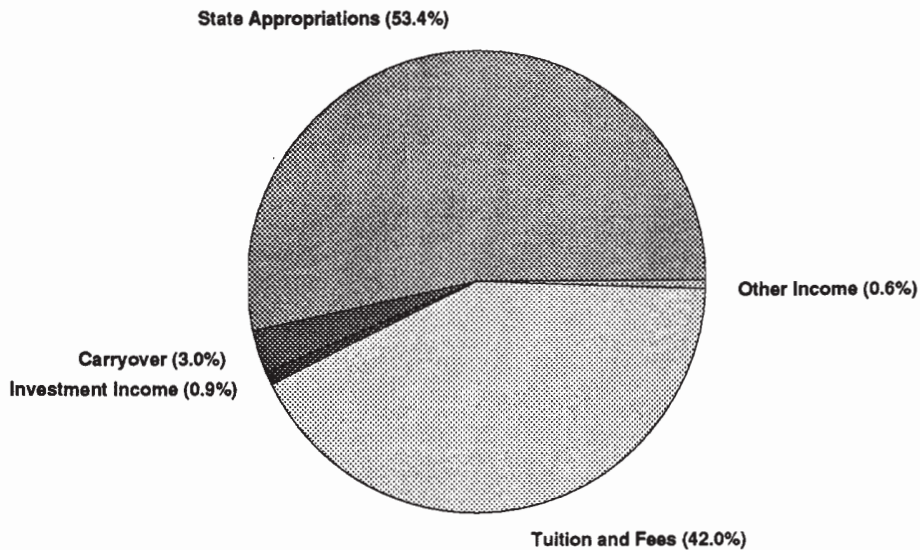
Source: Budget Office, General Fund Operating Budget FY-91/92

BUDGET

FERRIS STATE UNIVERSITY REVENUE SUMMARY (AMOUNTS IN THOUSANDS)

RECOMMENDED FY-91 BUDGET REFLECTS REVENUE TOTAL OF \$76,570,000

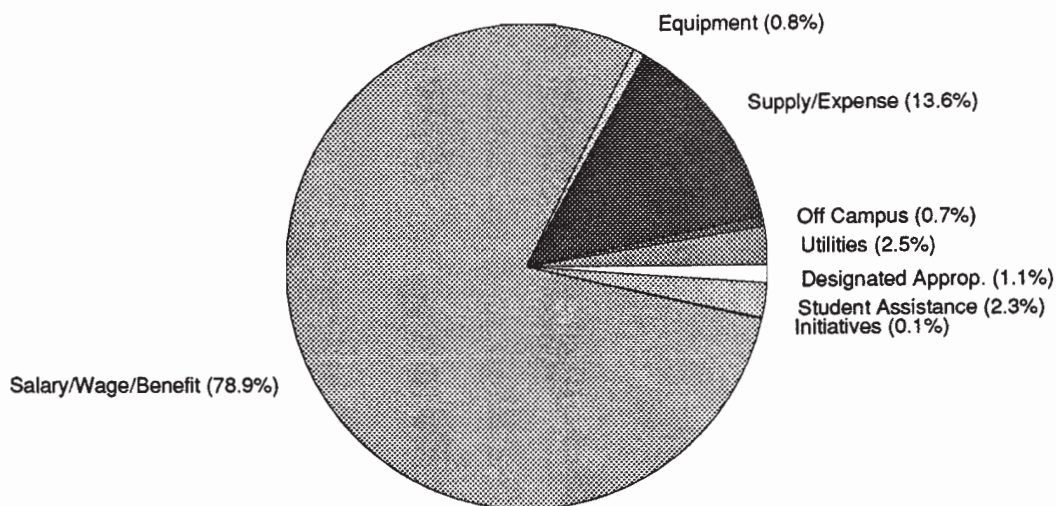
	AMOUNT	PERCENT
STATE APPROPRIATIONS	\$40,920	53.45%
INVESTMENT INCOME	700	0.91%
TUITION AND FEES	32,192	42.04%
OTHER INCOME	440	.57%
CARRYOVER	2,318	3.03%
TOTAL	\$76,570	



Source: Budget Office, General Fund Operating Budget FY-91/92

**FERRIS STATE UNIVERSITY
EXPENDITURE SUMMARY
(AMOUNTS IN THOUSANDS)**

	AMOUNT	PERCENT
SALARY/WAGE/BENEFIT	\$60,030	78.9%
SUPPLY/EXPENSE	10,319	13.6%
UTILITIES	1,928	2.5%
STUDENT ASSISTANCE	1,779	2.3%
EQUIPMENT	591	.8%
DESIGNATED APPROP.	872	1.1%
OFF CAMPUS	532	.7%
INITIATIVES	60	.1%
TOTAL	\$76,111	



Source: Budget Office, General Fund Operating Budget FY-91/92

BUDGET

**BUDGETARY PLANNING AND ANALYSIS
SUMMARY OF 1991-92 TUITION/FEES AND ROOM/BOARD
MICHIGAN PUBLIC UNIVERSITIES**

	FY-92 TUITION	TUITION RANK	FY-92 RM/BRD	ROOM/ BOARD RANK	FY-92 TOTAL COST	TOTAL COST RANK
University of Michigan	4,044	1	4,084	1	8,128	1
Michigan State	3,741	2	3,375	11	7,116	2
Michigan Tech	2,916	3	3,390	10	6,306	3
Western Michigan	2,668	6	3,628	3	6,296	4
Lake Superior	2,518	9	3,589	5	6,107	5
Oakland	2,541	8	3,500	8	6,041	6
Central Michigan	2,436	11	3,582	6	6,018	7
Eastern Michigan	2,285	13	3,669	2	5,954	8
Ferris	2,565	7	3,318	12	5,883	9
Grand Valley	2,276	14	3,590	4	5,866	10
Saginaw Valley	2,426	12	3,400	9	5,826	11
Northern Michigan	2,249	15	3,506	7	5,755	12
Wayne State	2,859	4				
UM - Flint	2,460	10				
UM - Dearborn	2,789	5				
UNWEIGHTED AVERAGE	2,718		3,553		6,275	

Sources: General Fund Operating Budget, Fiscal 1991-92
October, 1991

Facilities

**SUMMARY OF FACILITIES OWNED OR RENTED
BY FERRIS STATE UNIVERSITY**

BUILDING	SQUARE FEET	CUBIC FEET	YEAR CONSTRUCTED OR IMPROVED
NON-GENERAL FUNDED FACILITIES			
BOND HALL	90,500	820,400	1966
BROPHY HALL	47,000	482,750	1962
CARLISLE HALL	47,200	423,000	1957
CLARION HOTEL COMPLEX	72,789	582,000	1990
CLARK HALL	41,500	360,900	1960
CONFERENCE CENTER	25,238	380,000	1990
COPY CENTER	3,380	34,400	1969
COUNTY STORAGE (RENTED)	20,000	240,000	1989
CRAMER HALL	91,700	824,700	1969
EAST CAMPUS APARTMENTS	72,600	636,200	1955
HALLISY HALL	44,700	406,000	1958
HEALTH CENTER (50%)	9,200	91,250	1959-67
HELEN FERRIS HALL	44,300	383,000	1956
HENDERSON HALL	44,900	405,500	1965
ICE ARENA	64,900	925,850	1974
KATKE GOLF CART STORAGE	2,800	27,600	1984
KATKE CLUBHOUSE/MAINT BLDG	5,600	83,200	1974
KNOLLCREST COMMONS	11,094	292,860	1961
MASSELINK COMPLEX	104,700	942,300	1955-58
MCKESSY HOUSE	6,534	52,000	1989
MCNERNEY HALL	47,000	482,750	1962
MERRILL HALL	51,700	515,050	1961
MILLER HALL	47,382	444,245	1963
M.R.P.C.	16,836	192,612	1985-87
PICKELL HALL	50,400	468,600	1964
PUTERBAUGH HALL	46,400	436,400	1965
RACQUET BALL FACILITY	38,800	994,000	1980-87
RANKIN CENTER	109,100	1,385,900	1958-87
SOUTH CAMPUS APARTMENTS	53,200	466,400	1958
SOUTH COMMONS	14,664	161,895	1963
SOUTHWEST COMMONS	19,500	253,600	1965-86
SOUTHWEST POWER PLANT	2,200	33,200	1964
TAGGART HALL	47,800	450,600	1964
TRAVIS HALL	51,700	515,050	1961
VANDERCOOK HALL	42,350	394,000	1957
WARD HALL	41,320	407,260	1963
WEST CAMPUS APARTMENTS	164,000	1,644,400	1969
TOTAL NON-GENERAL FUNDED	1,604,487	17,639,872	

FACILITIES

SUMMARY OF FACILITIES OWNED OR RENTED BY FERRIS STATE UNIVERSITY

BUILDING	SQUARE FEET	CUBIC FEET	YEAR CONSTRUCTED OR IMPROVED
GENERAL FUNDED FACILITIES			
ALUMNI BUILDING	34,600	510,000	1929
AUTOMOTIVE CENTER	77,000	1,235,400	1956-88
BISHOP HALL	50,900	480,600	1968-87
BUSINESS BUILDING	90,600	700,000	1970
CARILLON TOWER	100	4,900	1968
CONSTRUCTION TECHNOLOGY	23,400	500,000	1962
CREATIVE ARTS	7,200	93,900	1965
DEPT OF PUBLIC SAFETY	4,400	35,000	1959-83
EWIGLEBEN SPORTS COMPLEX	39,800	567,950	1974-82
GENERAL SERVICES BLDG	27,143	490,330	1984-88
GROUNDS FACILITIES	9,032	98,856	1979
HEALTH CENTER (50%)	9,200	91,250	1959-67
HEALTH & PHYS EDUC	96,300	2,220,000	1962
HEAVY EQUIPMENT TECH	52,000	1,188,000	1987
INSTR RESOURCE CENTER	54,700	630,000	1969
JOHNSON HALL	33,600	328,600	1959
LIBRARY	57,000	723,900	1967
MUSIC CENTER	10,000	137,900	1962
PENNOCK HALL	50,900	480,600	1968-77
PHARMACY BUILDING	62,200	1,214,300	1972
PLASTICS TECHNOLOGY	18,800	230,700	1987
POWER PLANT	19,900	421,900	1955-88
PRAKKEN BUILDING	42,100	503,900	1952
SCIENCE BUILDING	107,300	1,680,000	1955-67
STARR BUILDING	86,400	1,607,200	1962
SWAN BUILDING	131,600	1,685,400	1966-88
TOP TAGGART EAST	400	3,000	1965
TOP TAGGART WEST	800	6,000	1970
UNIVERSITY RESIDENCE	6,140	49,120	1958-84
VFS ALLIED HEALTH BLDG	67,400	1,493,800	1979
WEST BUILDING	23,700	292,500	1952-85
WEST COMMONS	19,800	269,300	1968
TOTAL GENERAL FUNDED	1,314,415	19,974,306	
FSU'S GRAND TOTAL	3,009,402	37,614,178	

Source: University Architect

**FERRIS STATE UNIVERSITY
TIMME LIBRARY**
May 30, 1991

Holdings

Monograph Titles	197,679
Serial Titles	2,174
Periodical Subscriptions	1,328
Physical Volumes	324,158
Items Barcoded for Circulation	122,929
Microforms (pieces)	3,129,057
U.S. Documents	56,198
Cartographic Materials	2,650
Miscellaneous Media (pieces)	52,355
Manuscripts (linear feet)	813.5

Services
Averaged by Week

Hours Open	87
Attendance (Fall Quarter)	10,101
Reference Transactions	700
Online Database Searches	3
Group Presentation	8

NOTE: "Monograph Titles...Items" are current. The remainder of the statistics are from the most recent IPEDS Report.

Source: FSU Library

