

**PRELIMINARY PROGRAM**  
**September 21-23, 2005**

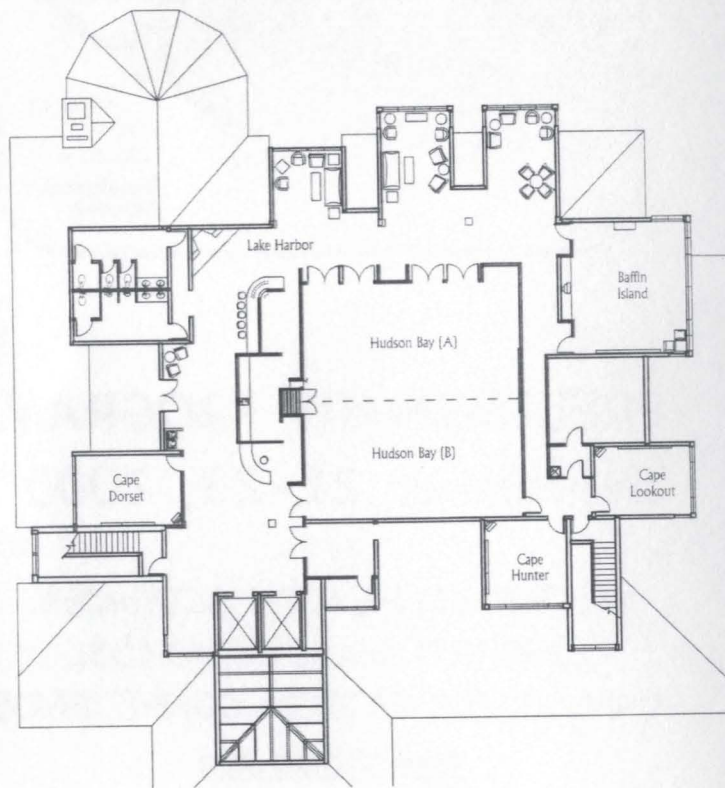
**MICHIGAN HEALTH SCIENCES  
LIBRARIES ASSOCIATION  
ANNUAL EDUCATION CONFERENCE**

[www.mhsla.org](http://www.mhsla.org)

# CRYSTAL MOUNTAIN

## Crystal Center Conference Rooms

### Upper Level



## WELCOME MESSAGE FROM THE MHSLA PRESIDENT

Welcome to MHSLA 2005! Our annual conference is renowned for quality educational offerings and networking opportunities. This year promises to be one of the best. The conference location, set in the rustic splendor of the north woods, will delight you. Speakers and programs are relevant to the challenges we face daily in our libraries. Diverse vendors will be on hand to showcase their products. The special event is designed to spotlight the natural beauty of the region.

Come with your enthusiasm for our profession. Leave with new knowledge, new contacts, new perspectives and a renewed sense of purpose. At Camp MHSLA, inspiration abounds!



Jennifer Barlow, MLS  
President, MHSLA  
Borgess Health Alliance  
Kalamazoo, Michigan

## TABLE OF CONTENTS



Sponsors.....	1
Exhibitors.....	1
Poster Presenters.....	2
Conference Planning Committee.....	3
Education Committee.....	3
Local Arrangements Committee.....	3
Hospitality Table Hours.....	4
MHSLA Officers.....	4
CE - Recreating Services.....	5
CE - Copyright & Electronic Licensing.....	6
CE - Teaching EB Healthcare Resources.....	6
Opening Reception.....	7
Opening Keynote Address.....	8
MHSLA Business Meeting.....	9
Concurrent Session - Link Resolvers.....	9
Concurrent Session - Information Management.....	10
Session - GMR Update.....	11
Special Event.....	12
Exhibits & Poster Presentations.....	12
Closing Keynote Address.....	12
Concurrent Session - Animals as Human Helpers.....	13
Concurrent Session - Contributed Papers.....	14
Conference Participants.....	16

Maps - Located inside front and back cover

**Note:** Breakfast and lunch will be served in the Mountain View Restaurant in the Lodge, just a short walk from the Conference Center. See map on back cover.

## SPONSORS

MHSLA would like to thank the following organizations for their support:

CINAHL - Product Support  
EBSCO - Break Sponsorship  
MD Consult - Lunch & Learn  
Matthews Medical Books - Break Sponsorship  
Munson Healthcare  
Northwestern Michigan College  
OVID Technologies - Break Sponsorship  
Proquest - Lunch & Learn  
Swets Information Services - Break Sponsorship  
Stat!Ref - CE Sponsorship  
Traverse Area District Library



## EXHIBITORS

Friday, September 23

EBSCO	Rittenhouse
Matthews Medical Books	Stat!Ref
MD Consult	Swets Information Services
Michigan Library Consortium	Wayne State University
NN/LM Greater Midwest Region	
OVID Technologies	
Otech Services	

POSTER PRESENTERS

Friday, September 23

Digitizing Hospital Archives

Yvonne Boudreau  
Munson Healthcare

MDMLG - Overview

Patricia Vinson  
Michigan Orthopaedic Specialty Hospital

MHSLA Archives

Maureen Watson  
Ferris State University

Northern Michigan Library Services  
Collaboration & Cooperation

Barbara Platts  
Munson Healthcare



CONFERENCE PLANNING COMMITTEE

Arlene Weismantel, Chairperson  
Valeria Long, Education Committee  
Barbara Platts, Local Arrangements Committee



EDUCATION COMMITTEE

Valeria Long, Chairperson

Chris Allen  
Cathy Eames  
Eleanor Lopez  
Ellen O'Donnell

Sheila Bryant  
Janice Heather  
Ken Nelson  
Brett Powers

LOCAL ARRANGEMENTS COMMITTEE

Barbara Platts, Co-Chairperson  
Susan Wischman, Co-Chairperson

Chris Allen  
Jim Brody  
Anne Foster  
Lizbeth Messing

Yvonne Boudreau  
Sherri Dittman  
Gail Jones  
Kay Muller

## HOSPITALITY TABLE HOURS

Tuesday, Sept. 20.....	6:00 p.m. - 8:00 p.m.
Wednesday, Sept. 21.....	7:00 a.m. - 8:00 a.m. 12:00 noon - 1:00 p.m. 4:00 p.m. - 5:30 p.m. 7:00 p.m. - 8:00 p.m.
Thursday, Sept. 22.....	8:00 a.m. - 9:00 a.m. 12:00 noon - 1:00 p.m. 3:00 p.m. - 4:00 p.m.
Friday, Sept. 23.....	8:00 a.m. - 9:00 a.m.

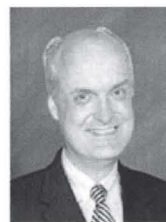


## MHSLA OFFICERS

President.....	Jennifer Barlow
President-Elect.....	Arlene Weismantel
Immediate Past President.....	Joan Emahiser
Secretary.....	Yvonne Boudreau
Treasurer.....	Marilyn Dow
Archivist.....	Maureen Watson

## WEDNESDAY, SEPTEMBER 21 CONTINUING EDUCATION CLASSES

Recreating Services with New Technologies:  
Service Strategies for the Millennium  
(#2004, 6 MLA CE Credit Hours, 8:30 a.m.-4 p.m.)



Program presented by:  
Stephen Abram  
Dysart & Jones Associates  
Toronto, Ontario

Stephen Abram, a leading international librarian and the current President of the Canadian Library Association, has extensive experience in library technology and trend forecasting. Abrams has more than 25 years in libraries as a practicing librarian and in the information industry. In 2002, *Library Journal* named Stephen one of the key people influencing the future of libraries and librarianship.

This course will demonstrate how to evaluate your clients and services, and to determine which of your services should be retained, recreated, or "recycled".





**Copyright and Electronic Licensing Issues**  
(#4021, 4 MLA CE Credit Hours, 8 a.m.-12 noon)



Program presented by:  
Dr. Marilu Goodyear  
University of Kansas  
Lawrence, Kansas

Marilu Goodyear is the Vice Provost for Information Services and the Chief Information Officer for The University of Kansas. She leads all campus-wide software, hardware and networking technology services, printing services and the Kansas University libraries.

This course will explore licensing issues and provide advice on licensing provisions, processing, and negotiation.

**Teaching Evidence-Based Healthcare Resources**  
(#6611, 4 MLA CE Credit Hours, 1 p.m.-5 p.m.)



Program presented by:  
Jan Glover, MLS, AHIP  
Yale University  
New Haven, Connecticut

Jan Glover is Education Services and Reference Librarian at the Cushing/Whitney Medical Library, Yale School of Medicine. She has been teaching evidence-based practice principles and techniques to students and

faculty through course-integrated instruction, workshops, and one-on-one sessions.



Program presented by:  
Janene Batten, MLS, AHIP  
Yale University  
New Haven, Connecticut

Janene Batten is Reference Librarian at the Yale School of Nursing. She works closely with nursing staff in the hospital setting providing training in research techniques. Janene also has extensive experience teaching research principles to nursing students and nursing clinicians.

This course will help you identify available EBHC resources, and apply clinical filters and hedges for MEDLINE. Participants will learn to design a basic class translating PICO questions into a search strategy, construct effective demonstrations, and create appropriate handouts.

---

**WEDNESDAY'S OPENING RECEPTION**  
"Northern Migration"  
Natural Wonders of the North  
(5:30 p.m.-8 p.m.)



Join us as we journey to the top of Crystal Mountain. At the mountaintop we will experience awesome views, autumn highlights, birds of prey, and enjoy a cookout.

---

THURSDAY, SEPTEMBER 22

OPENING KEYNOTE ADDRESS

Michigan 2010:  
Public Health Issues in Michigan  
(9 a.m.-10 a.m.)



Keynote presented by:  
Jean Chabut  
Chief Administrative Officer  
Michigan Department of Community Health  
Lansing, Michigan

Jean Chabut is the Chief Administrative Officer for the Michigan Department of Community Health, where she is responsible for the management and direction of Michigan's public health programs and policies. Jean began her career as a Public Health Nurse and later served as the Director of the Bureau of Chronic Diseases and Injury Control. She developed programs on heart disease, stroke, cancer, and diabetes, which are used as national models. Jean serves on the Scientific Advisory Committee for the Kidney Foundation of Michigan and the Policy Advisory Committee for the American Heart Association.

Today's public health is the art and science of safeguarding and improving our communities. Specific issues facing Michigan citizens and how the Michigan Department of Community Health is addressing these matters will be discussed.

---

MHSLA BUSINESS MEETING

(10:15 a.m.-12 noon)

---

Concurrent Sessions

Link Resolvers 101  
An Overview: Tools & Tips for  
Implementation in the Hospital Setting  
(1 p.m.-2:30 p.m.)



Program presented by:  
Leslie Burke, MLS  
EBSCO Information Services\*  
Grand Rapids, Michigan

Leslie Burke is an Account Services Manager for EBSCO Information Services. Leslie began her career working as a Corporate Librarian. For over 11 years, Leslie managed the Corporate Library at Amway in Ada, Michigan. She also worked at several religious colleges and seminaries. She has presented a number of programs at the Michigan Library Association and the Special Libraries Association.

This session will provide tips, tricks, and implementation suggestions for utilizing link resolver software applications and provide guidelines for managing the vast array of electronic resources available in libraries.

\*This session will contain no commercial bias.

Innovations in Personal Information  
Management - State of the Art Implications  
for Health Care Professionals and Librarians

(1 p.m.-2:30 p.m.)



Program presented by:  
Craig Mulder  
Executive Director  
Learning Resources & Technologies  
Northwestern Michigan College  
Traverse City, Michigan

Craig Mulder is the Executive Director of Learning Resources and Technologies, which encompasses the Library, Online and Flexible Learning, Media Resources, Networking and Computing Services, and Institutional Research at Northwestern Michigan College. Craig began his career, as a high school teacher, served in the Peace Corps, was a librarian, and a community college administrator.

This session will explore and describe how new types of internet, intranet, and desktop search engines allow for a customized information environment and the implications these tools have for professionals in the health field.



Thursday's Final Session

GMR Update  
(2:45 p.m.-3:15 p.m.)



Program presented by:  
Tammy Mays, MLIS, AHIP  
Consumer Health Coordinator  
National Network of Libraries of Medicine  
Greater Midwest Region  
Chicago, Illinois

Tammy Mays is the Consumer Health Coordinator for the NN/LM, Greater Midwest Region, and is responsible for building consumer health programs for the region by developing instructional materials, presenting, and exhibiting at professional meetings. She also trains Public Librarians, consumers, and health professionals to search NLM's consumer health products and services.

Prior to joining the Greater Midwest Region, Tammy was the Outreach Coordinator at the University of Wisconsin-Madison Health Sciences Libraries. She was also an Associate Fellow at the National Library of Medicine in Bethesda, Maryland.

This update will provide you with information on new programs, products, and services from the GMR.





## THURSDAY'S SPECIAL EVENT

### Great Northwest Expedition: "Trekking Bear"

(4:30 p.m.-10 p.m.)

The expedition begins with a bus tour along the scenic Sleeping Bear Dunes National Lakeshore. The group will enjoy breathtaking views of Sleeping Bear Dunes, North and South Manitou Island, and the spectacular horizon of Lake Michigan. Dinner will follow at the Brookside Inn, with a final stop at the Gwen Frostic Print gallery. Be sure to bring your camera and binoculars!



## FRIDAY, SEPTEMBER 23

### EXHIBITS & POSTER PRESENTATIONS

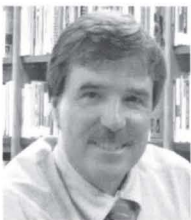
(8:30 a.m.-3 p.m.)

---

### CLOSING KEYNOTE ADDRESS

(9 a.m.-10 a.m.)

Information as Energy-From Dewey Decimal to Quantum: Is the Librarian the Motherboard?



Presented by:  
Vince Cornellier, Ph.D.  
Clinical Psychologist  
Munson Healthcare  
Traverse City, Michigan

Dr. Cornellier is a Staff Psychologist at the Munson Medical Center Spine and Nerve Pain Treatment Center where he provides therapy to those with chronic pain from illness, injury or disease. He is on the JCAHO Ad-Hoc Committee on Pain and is a member of the hospital Ethics Committee.

The role of the librarian has evolved from that of an information collector and disseminator to that of an interactive knowledge facilitator. Interpersonal skills librarians need in order to be effective in this role, including assessing the personality and style of the information seeker, setting reasonable goals, selecting appropriate strategies, and evaluating the outcome of the interaction will be discussed.

---

### Concurrent Sessions

#### From Fido to Mickey: Animals as Human Helpers

(1 p.m.-2 p.m.)



Program presented by  
Sheila Bryant, MLIS, AHIP  
Michigan State University  
East Lansing, Michigan

Sheila Bryant is a Veterinary Medicine Librarian at Michigan State University.





Program presented by:  
Valeria Long, MLIS  
Van Andel Institute  
Grand Rapids, Michigan

Valeria Long is the Grand Valley State  
University Librarian at the Van Andel Institute.

Animals assist us in many ways, most notably as service and research animals. This session explores how service and research animals are selected, trained, and used. The required review process for using animals for research purposes will also be discussed.



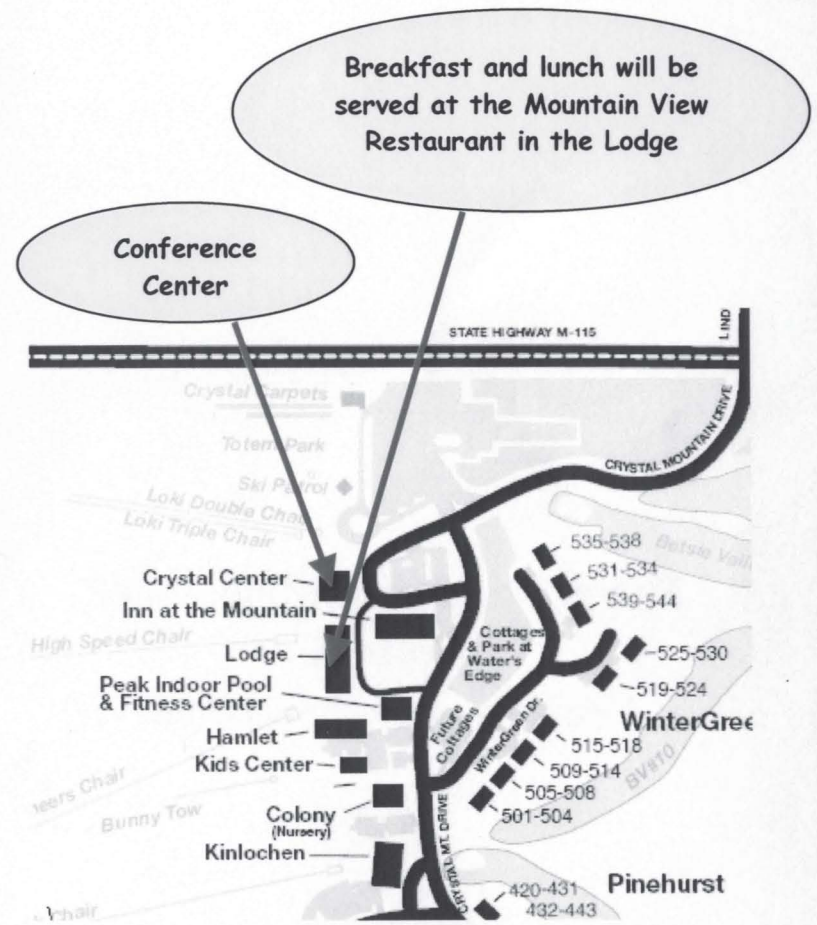
Contributed Papers  
(1 p.m.-2 p.m.)



CONFERENCE PARTICIPANTS



# CRYSTAL MOUNTAIN RESORT



OCT 19 2005

Thank You for Visiting CAMP  
MHSLA!  
Have a safe trip home

