



A Knowledge **Kaleidoscope!**

**FINAL PROGRAM
KALAMAZOO, MI
OCTOBER 13-15, 2004**

**MICHIGAN HEALTH SCIENCES LIBRARIES ASSOCIATION
ANNUAL EDUCATION CONFERENCE
www.mhsla.org**

XXXXXXXXXXXXXXXXXXXXXXXXXXXXXXXXXXXXXXXXXXXXXXXXXXXXXXXXXXXXXXXXXXXXXXXXXXXX

CONTRIBUTORS

MHSLA would like to thank the following for their support:

Elsevier/MD Consult/First Consult
Major Scientific Books
Matthews Medical Books
Ovid Technologies, Inc.
Swets Information Services, Inc.
Wallaceburg Bookbinding

XXXXXXXXXXXXXXXXXXXXXXXXXXXXXXXXXXXXXXXXXXXXXXXXXXXXXXXXXXXXXXXXXXXXXXXXXXXX

EXHIBITORS

Basch Subscriptions, Inc. & The Reference Shelf
Doody Enterprises
Ebsco
Elsevier/MD Consult/First Consult
Fennell Subscription Service, Inc.
Majors Scientific Books
Matthews Medical Books
Michigan Library Consortium
Otech Services, Inc.
Ovid Technologies, Inc.
Rittenhouse Book Distributors, Inc.
Swets Information Services, Inc.
Teton Data
UpToDate
Wallaceburg Bookbinding

EXHIBIT AREA HOURS

8:00am—3:00pm
Friday, October 15th
Glens 1 & 2

XXXXXXXXXXXXXXXXXXXXXXXXXXXXXXXXXXXXXXXXXXXXXXXXXXXXXXXXXXXXXXXXXXXXXXXXXXXX

CONFERENCE REGISTRATION

Tuesday, Oct. 12.....	6:00pm-8:00pm
Wednesday, Oct. 13.....	7:00am-8:00am
	12:00pm-1:00pm
	4:00pm-6:00pm
	7:00pm-8:00pm
Thursday, Oct. 14.....	7:30am-9:00am
	12:00pm-1:00pm
	4:30pm-6:00pm
Friday, Oct. 15.....	7:30am-9:00am

MHSLA OFFICERS

President.....	Joan Emahiser
President-Elect.....	Jennifer Barlow
Secretary.....	Yvonne Boudreau
Treasurer.....	Janet Zimmerman
Archivist.....	Maureen Watson
Immediate Past-President.....	Alexia Estabrook

CONFERENCE PLANNING COMMITTEE

Jennifer Barlow, Chair
 Cathy Eames Maureen Watson

EDUCATION COMMITTEE

Cathy Eames, Chair
 Christine Allen Diana Balint Doris Blauet
 Valeria Long Ken Nelson Ellen O'Donnell
 Deborah Porter

LOCAL ARRANGEMENTS COMMITTEE

Jennifer Barlow, Co-Chair	Maureen Watson, Co-Chair	
Carol Aebli	Judy Ellis	Bill Grant
Mary Hanson	Lois Huisman	Marge Kars
Mary Loftis	Valeria Long	Eleanor Lopez
Betty Marshall	Brett Powers	Jessica Rush
Judy Schroeder	Sandy Swanson	Mary Jo Wyels

MHSLA Badge Colors:
 MHSLA Board = Blue, Education Committee = Yellow, Vendors = Green
 Local Arrangements Committee = Pink, Presenters = Purple

2:45pm A shuttle bus will leave from the lobby for Concurrent Session #1 below.

3pm-4:30pm **CONCURRENT SESSIONS**

#1 **Borgess Navigation Center**
Borgess Medical Center **Elyse Kaps**, Director of Education, and **Jennifer Barlow**, Library Manager, Borgess Medical Center, Kalamazoo, MI
This session will feature a tour of the unique Navigation Center at Borgess Medical Center. This environment is designed to bring out the best in individuals and groups as they solve problems, design new strategies and determine better ways of working together.

#2 **PubMed Linkout**
Stone Theater **Kara Thompson**, Communications Coordinator, NN/LM Greater Midwest Region, Chicago, IL
LinkOut is a newer feature that allows you to link your library's electronic journals to PubMed. Patrons can go directly to a journal article that your library owns during their PubMed search. This session will show how quickly and easily this function can be set up.

4:30pm-6pm **BREAK**

6pm-10pm **DINNER AND SPECIAL EVENT**
The Meadows Bagpipes, belly dancing and boogie are the themes for this year's dinner and special event. Come dine and enjoy listening to a bagpipe band, watching an expert belly dancer and dancing to music played by DJs who will highlight songs about books, science, medicine, libraries and will play your special requests.

KKKKKKKKKKKKKKKKKKKKKKKKKKKKKKKKKKKKKKKKKKKKKKKKKKKKKKKKKKKKKKKKKKKKKKKKKKKKKKKKKKKK

FRIDAY, OCTOBER 15

8am-9am **COMPLIMENTARY BREAKFAST**
The Meadows

8am-3pm **VENDOR EXHIBITS & POSTER PRESENTATIONS**
Glens 1 & 2

POSTER TITLES & PRESENTERS

Urban Health Partners: Strategies for Developing a Public Health Information Outreach Program

Deborah H. Charbonneau, MLS, Coordinator for Information Access and Delivery and Principal Investigator; Annette M. Healy, PhD, Information Specialist; and Vera P. Shiffman, Medical Library, Wayne State University, Detroit

MHSLA Kalamazoo: Kaleidoscope of Keynotes

Maureen Watson, M.S., AHIP, Optometry Librarian, Professor, MHSLA Archivist, Ferris State University, Big Rapids

MHSLA Conference 2005 Preview

Susan Wischman, Munson Healthcare, Traverse City

Where Do I Start? Searching for Human-Animal Bond Information

Sheila Bryant, MLIS, AHIP, Health Sciences/Veterinary Medicine Librarian, Michigan State University, East Lansing

Going for the Green\$\$\$\$

Martha M. Studaker, AHIP, Library Director; Phyllis L. Reams, Librarian I; and Sharon J. Williams, Librarian I, Hamady Health Sciences Library, Hurley Medical Center, Flint

Northern Michigan Access Project

Barbara Platts, MLIS, AHIP, Library Services, Munson Healthcare, Traverse City

Overview of MDMLG

Patricia Vinson, MSLS, Senior Staff Librarian, Michigan Orthopaedic Speciality Hospital, Madison Heights

Collaboration and Cooperation - MHSLA and the GMR

Chris Allen, MSLS, AHIP, Munson Healthcare, Community Health Library, Traverse City; Jennifer Barlow, MLIS, Borgess Medical Center, Borgess Library, Kalamazoo; Joan Emahiser, MSLS, AHIP, William Beaumont Hospital, Library Information Services, Royal Oak; and Barbara Platts, MLIS, AHIP, Munson Healthcare, Library Services, Traverse City

9am-
10:30am
Glens 3

ELECTRONIC DOCUMENT DELIVERY PANEL

Jennifer Barlow, Library Manager, Borgess Medical Center Kalamazoo; Sharon Vanderklok, Library Assistant, Borgess Medical Center, Kalamazoo; Nardina N. Mein, Director, Sladen Library, Henry Ford Health System, Detroit; Lea Ann McGaugh, Manager, Medical Library, McLaren Regional Medical Center, Flint; and Ellen O'Donnell, Director, Medical Library, St. John Hospital & Medical Center, Detroit

The panel will present their experiences with electronic document delivery systems. Products to be covered include Ariel, Relais, and Borgess' locally developed system. Results of the MHSLA Ariel Grant Survey will also be discussed.

10:30am-11am
Glens 1 & 2

BREAK

11am-1pm

LUNCH ON YOUR OWN

1pm-2:30pm

CONCURRENT SESSIONS

#1
Great
Lakes
2 & 3

Archiving 101— What am I supposed to do with this stuff?

Sharon L. Carlson, PhD, Director, Western Michigan University Archives and Regional Histories Collection, Kalamazoo, MI

This session will focus on basic archival techniques, including information and hands-on demonstrations about the proper handling, housing and storage of photographs, negatives, documents, ephemera and other materials. Holdings of the WMU Archives and Regional History Collections will be highlighted.

#2
Glens 3

Scholarly Communication and Libraries: The Crisis, Challenges, and New Models

Susan Kendall and Arlene Weismantel, Health Sciences Librarians, Michigan State University, East Lansing, MI

The presenters will look at the issues and challenges of obtaining scholarly information when prices are escalating and set by large consolidated publishing firms. The open access movement will be discussed.

2:30pm-3pm

Glens 1 & 2

BREAK

Sponsored by Ovid Technologies, Inc.

3pm-4pm

Great Lakes

2 & 3

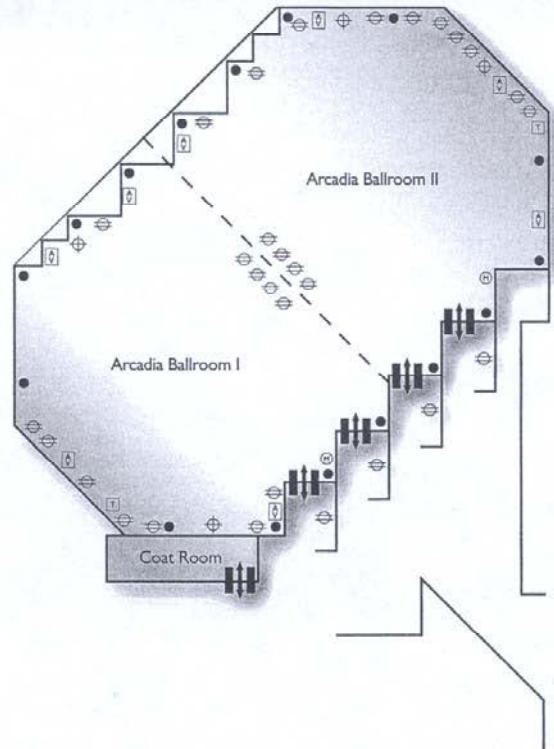
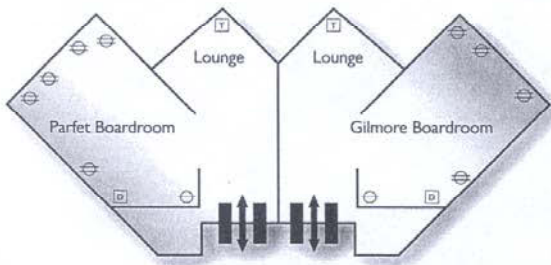
**EVALUATION OF ONLINE EVIDENCE-BASED
MEDICAL RESOURCES AT THE POINT OF CARE**

Sandra Dahlman, *Outreach Librarian, Spectrum Health Sciences
Library, Grand Rapids, MI*

This session focuses on a study designed to compare the effectiveness of four evidence-based Internet databases to provide rapid point-of-care access to essential health care information and simplify the task of choosing the best product for your library. Databases covered will be UpToDate, Cliniguide, DISEASEDEX, and First Consult.

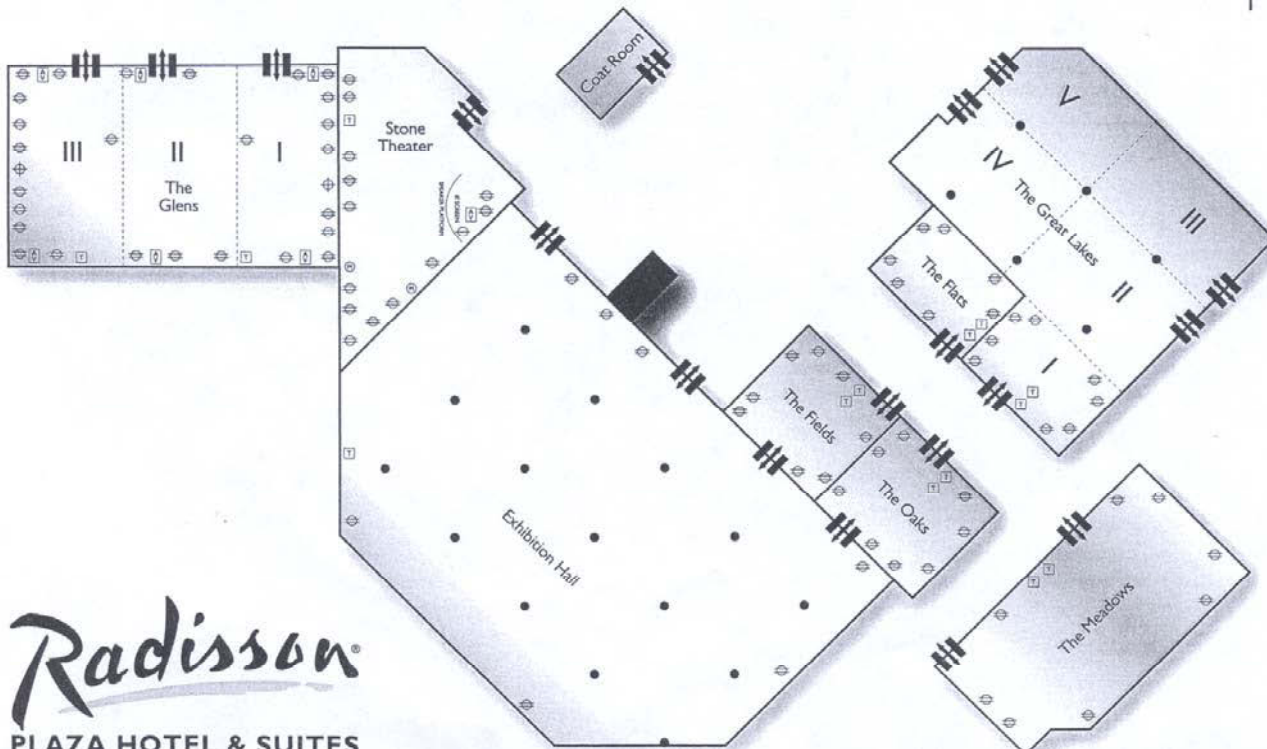
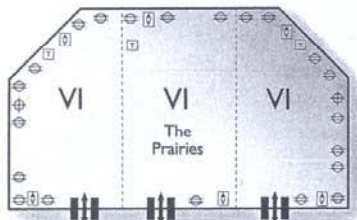
Notes

MEETING FACILITY DIAGRAM



KEY

- ⊕ 110 VOLT OUTLET
- ⊕ 220 VOLT OUTLET
- ⊖ TELEVISION
- Ⓜ MEDIA OUTLET
- COLUMN
- AV AV OUTLET
- T TELEPHONE
- D DIMMER SWITCH





www.mhsla.org