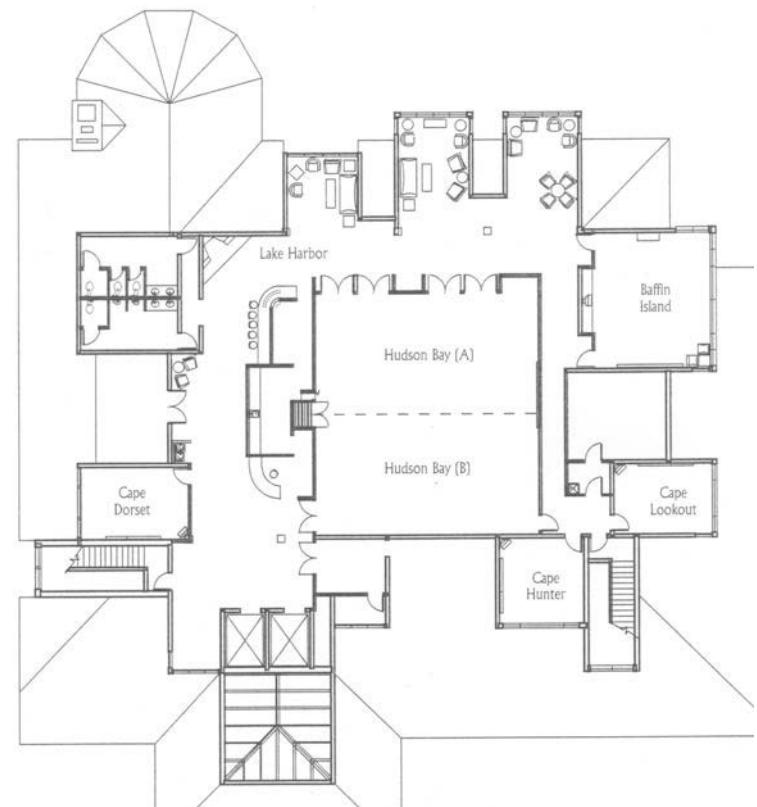


PRELIMINARY PROGRAM September 21-23, 2005

MICHIGAN HEALTH SCIENCES
LIBRARIES ASSOCIATION
ANNUAL EDUCATION CONFERENCE

www.mhsla.org

CRYSTAL MOUNTAIN Crystal Center Conference Rooms Upper Level





WELCOME MESSAGE FROM THE MHSLA PRESIDENT

Welcome to MHSLA 2005! Our annual conference is renown for quality educational offerings and networking opportunities. This year promises to be one of the best. The conference location, set in the rustic splendor of the north woods, will delight you. Speakers and programs are relevant to the challenges we face daily in our libraries. Diverse vendors will be on hand to showcase their products. The special event is designed to spotlight the natural beauty of the region.

Come with your enthusiasm for our profession. Leave with new knowledge, new contacts, new perspectives and a renewed sense of purpose. At Camp MHSLA, inspiration abounds!



Jennifer Barlow, MLS
President, MHSLA
Borgess Health Alliance
Kalamazoo, Michigan

TABLE OF CONTENTS



Sponsors.....	1
Exhibitors.....	1
Poster Presenters.....	2
Conference Planning Committee.....	3
Education Committee.....	3
Local Arrangements Committee.....	3
Hospitality Table Hours.....	4
MHSLA Officers.....	4
CE - Recreating Services.....	5
CE - Copyright & Electronic Licensing.....	6
CE - Teaching EB Healthcare Resources.....	6
Opening Reception.....	7
Opening Keynote Address.....	8
MHSLA Business Meeting.....	9
Concurrent Session - Link Resolvers.....	9
Concurrent Session - Information Management.....	10
Session - GMR Update.....	11
Special Event.....	12
Exhibits & Poster Presentations.....	12
Closing Keynote Address.....	12
Concurrent Session - Animals as Human Helpers.....	13
Concurrent Session - Contributed Papers.....	14
Conference Participants.....	16

Maps - Located inside front and back cover

Note: Breakfast and lunch will be served in the Mountain View Restaurant in the Lodge, just a short walk from the Conference Center. See map on back cover.

SPONSORS

MHSLA would like to thank the following organizations for their support:

CINAHL - Product Support
EBSCO - Break Sponsorship
MD Consult - Lunch & Learn
Matthews Medical Books - Break Sponsorship
Munson Healthcare
Northwestern Michigan College
OVID Technologies - Break Sponsorship
Proquest - Lunch & Learn
Swets Information Services - Break Sponsorship
Stat!Ref - CE Sponsorship
Traverse Area District Library



EXHIBITORS

Friday, September 23

Basch Subscriptions, Inc.	Otech Services
EBSCO	Rittenhouse
Matthews Medical Books	Stat!Ref
MD Consult	Swets Information Services
Michigan Library Consortium	Wayne State University
NN/LM Greater Midwest Region	
OVID Technologies	

POSTER PRESENTERS

Friday, September 23

Ask the Librarian: Library Without Walls Serving the Community	Jennifer Bowen, Cathy Eames Jeffery Irish, Patricia Supnick Children's Hospital of Michigan
Champagne Results with a Beer Budget-RSS at Work in a Hospital Library	Sandy Swanson St. Mary's Mercy Medical Center
Cultural Competency Efforts at the University of Michigan	Terry Arndt, Alison Grodzinski Helen Look, Anna Schnitzer University of Michigan
Digitizing Hospital Archives	Yvonne Boudreau Munson Healthcare
Lung Cancer Patient Education Materials: A Survey	Brett Powers St. Mary's Mercy Medical Center
MDMLG - Overview	Patricia Vinson Michigan Orthopaedic Specialty Hospital
MHSLA Archives	Maureen Watson Ferris State University
New Ways to Support Patient Care: The Library As Publisher	Cathy Eames Children's Hospital of Michigan
Northern Michigan Library Services: Cooperation & Collaboration	Barbara Platts Munson Healthcare

CONFERENCE PLANNING COMMITTEE

Arlene Weismantel, Chairperson
Valeria Long, Education Committee
Barbara Platts, Local Arrangements Committee



EDUCATION COMMITTEE

Valeria Long, Chairperson

Chris Allen
Cathy Eames
Eleanor Lopez
Ellen O'Donnell

Sheila Bryant
Janice Heather
Ken Nelson
Brett Powers

LOCAL ARRANGEMENTS COMMITTEE

Barbara Platts, Co-Chairperson
Susan Wischman, Co-Chairperson

Chris Allen
Jim Brody
Anne Foster
Lizbeth Messing

Yvonne Boudreau
Sherri Dittman
Gail Jones
Kay Muller

HOSPITALITY TABLE HOURS

Tuesday, Sept. 20.....6:00 p.m. - 8:00 p.m.

Wednesday, Sept. 21.....7:00 a.m. - 8:00 a.m.
12:00 noon - 1:00 p.m.
4:00 p.m. - 5:30 p.m.
7:00 p.m. - 8:00 p.m.

Thursday, Sept. 22.....8:00 a.m. - 9:00 a.m.
12:00 noon - 1:00 p.m.
3:00 p.m. - 4:00 p.m.

Friday, Sept. 23.....8:00 a.m. - 9:00 a.m.



MHSLA OFFICERS

President.....Jennifer Barlow
President-Elect.....Arlene Weismantel
Immediate Past President.....Joan Emahiser
Secretary.....Yvonne Boudreau
Treasurer.....Marilyn Dow
Archivist.....Maureen Watson

WEDNESDAY, SEPTEMBER 21
CONTINUING EDUCATION CLASSES

**Recreating Services with New Technologies:
Service Strategies for the Millennium**
(#2004, 6 MLA CE Credit Hours, 8:30 a.m.-4 p.m.)



Program presented by:
Stephen Abram
Dysart & Jones Associates
Toronto, Ontario

Stephen Abram, a leading international librarian and the current President of the Canadian Library Association, has extensive experience in library technology and trend forecasting. Abrams has more than 25 years in libraries as a practicing librarian and in the information industry. In 2002, *Library Journal* named Stephen one of the key people influencing the future of libraries and librarianship.

This course will demonstrate how to evaluate your clients and services, and to determine which of your services should be retained, recreated, or "recycled".



Copyright and Electronic Licensing Issues
(#4021, 4 MLA CE Credit Hours, 8 a.m.-12 noon)



Program presented by:
Dr. Marilu Goodyear
University of Kansas
Lawrence, Kansas

Marilu Goodyear is the Vice Provost for Information Services and the Chief Information Officer for The University of Kansas. She leads all campus-wide software, hardware and networking technology services, printing services and the Kansas University libraries.

This course will explore licensing issues and provide advice on licensing provisions, processing, and negotiation.

Teaching Evidence-Based Healthcare Resources
(#6611, 4 MLA CE Credit Hours, 1 p.m.-5 p.m.)



Program presented by:
Jan Glover, MLS, AHIP
Yale University
New Haven, Connecticut

Jan Glover is Education Services and Reference Librarian at the Cushing/Whitney Medical Library, Yale School of Medicine. She has been teaching evidence-based practice principles and techniques to students and

faculty through course-integrated instruction, workshops, and one-on-one sessions.



Program presented by:
Janene Batten, MLS, AHIP
Yale University
New Haven, Connecticut

Janene Batten is Reference Librarian at the Yale School of Nursing. She works closely with nursing staff in the hospital setting providing training in research techniques. Janene also has extensive experience teaching research principles to nursing students and nursing clinicians.

This course will help you identify available EBHC resources, and apply clinical filters and hedges for MEDLINE. Participants will learn to design a basic class translating PICO questions into a search strategy, construct effective demonstrations, and create appropriate handouts.

WEDNESDAY'S OPENING RECEPTION

"Northern Migration"
Natural Wonders of the North

(5:30 p.m.-8 p.m.)



Join us as we journey to the top of Crystal Mountain. At the mountaintop we will experience awesome views, autumn highlights, birds of prey, and enjoy a cookout.

THURSDAY, SEPTEMBER 22

OPENING KEYNOTE ADDRESS

Michigan 2010:
Public Health Issues in Michigan

(9 a.m.-10 a.m.)



Keynote presented by:
Jean Chabut
Chief Administrative Officer
Michigan Department of Community Health
Lansing, Michigan

Jean Chabut is the Chief Administrative Officer for the Michigan Department of Community Health, where she is responsible for the management and direction of Michigan's public health programs and policies. Jean began her career as a Public Health Nurse and later served as the Director of the Bureau of Chronic Diseases and Injury Control. She developed programs on heart disease, stroke, cancer, and diabetes, which are used as national models. Jean serves on the Scientific Advisory Committee for the Kidney Foundation of Michigan and the Policy Advisory Committee for the American Heart Association.

Today's public health is the art and science of safeguarding and improving our communities. Specific issues facing Michigan citizens and how the Michigan Department of Community Health is addressing these matters will be discussed.

MHSLA BUSINESS MEETING

(10:15 a.m.-12 noon)

Concurrent Sessions

Link Resolvers 101 An Overview: Tools & Tips for Implementation in the Hospital Setting

(1 p.m.-2:30 p.m.)



Program presented by:
Leslie Burke, MLS
EBSCO Information Services*
Grand Rapids, Michigan

Leslie Burke is an Account Services Manager for EBSCO Information Services. Leslie began her career working as a Corporate Librarian. For over 11 years, Leslie managed the Corporate Library at Amway in Ada, Michigan. She also worked at several religious colleges and seminaries. She has presented a number of programs at the Michigan Library Association and the Special Libraries Association.

This session will provide tips, tricks, and implementation suggestions for utilizing link resolver software applications and provide guidelines for managing the vast array of electronic resources available in libraries.

*This session will contain no commercial bias.

Innovations in Personal Information Management - State of the Art Implications for Health Care Professionals and Librarians

(1 p.m.-2:30 p.m.)



Program presented by:
Craig Mulder
Executive Director
Learning Resources & Technologies
Northwestern Michigan College
Traverse City, Michigan

Craig Mulder is the Executive Director of Learning Resources and Technologies, which encompasses the Library, Online and Flexible Learning, Media Resources, Networking and Computing Services, and Institutional Research at Northwestern Michigan College. Craig began his career, as a high school teacher, served in the Peace Corps, was a librarian, and a community college administrator.

This session will explore and describe how new types of internet, intranet, and desktop search engines allow for a customized information environment and the implications these tools have for professionals in the health field.



Thursday's Final Session

GMR Update

(2:45 p.m.-3:15 p.m.)



Program presented by:
Tammy Mays, MLIS, AHIP
Consumer Health Coordinator
National Network of Libraries of Medicine
Greater Midwest Region
Chicago, Illinois

Tammy Mays is the Consumer Health Coordinator for the NN/LM, Greater Midwest Region, and is responsible for building consumer health programs for the region by developing instructional materials, presenting, and exhibiting at professional meetings. She also trains Public Librarians, consumers, and health professionals to search NLM's consumer health products and services.

Prior to joining the Greater Midwest Region, Tammy was the Outreach Coordinator at the University of Wisconsin-Madison Health Sciences Libraries. She was also an Associate Fellow at the National Library of Medicine in Bethesda, Maryland.

This update will provide you with information on new programs, products, and services from the GMR.



THURSDAY'S SPECIAL EVENT

Great Northwest Expedition: "Trekking Bear"

(4:30 p.m.-10 p.m.)

The expedition begins with a bus tour along the scenic Sleeping Bear Dunes National Lakeshore. The group will enjoy breathtaking views of Sleeping Bear Dunes, North and South Manitou Island, and the spectacular horizon of Lake Michigan. Dinner will follow at the Brookside Inn, with a final stop at the Gwen Frostic Print gallery. Be sure to bring your camera and binoculars!



FRIDAY, SEPTEMBER 23

EXHIBITS & POSTER PRESENTATIONS

(8:30 a.m.-3 p.m.)

CLOSING KEYNOTE ADDRESS

(9 a.m.-10 a.m.)

Information as Energy-From Dewey Decimal to Quantum: Is the Librarian the Motherboard?



Presented by:
Vince Cornellier, Ph.D
Clinical Psychologist
Munson Healthcare
Traverse City, Michigan

Dr. Cornellier is a Staff Psychologist at the Munson Medical Center Spine and Nerve Pain Treatment Center where he provides therapy to those with chronic pain from illness, injury or disease. He is on the JCAHO Ad-Hoc Committee on Pain and is a member of the hospital Ethics Committee.

The role of the librarian has evolved from that of an information collector and disseminator to that of an interactive knowledge facilitator. Interpersonal skills librarians need in order to be effective in this role, including assessing the personality and style of the information seeker, setting reasonable goals, selecting appropriate strategies, and evaluating the outcome of the interaction will be discussed.

Concurrent Sessions

From Fido to Mickey: Animals as Human Helpers (1 p.m.-2 p.m.)



Program presented by
Sheila Bryant, MLIS, AHIP
Michigan State University
East Lansing, Michigan

Sheila Bryant is a Veterinary Medicine Librarian at Michigan State University.



Program presented by:
Valeria Long, MLIS
Van Andel Institute
Grand Rapids, Michigan

Valeria Long is a Grand Valley State University Librarian at the Van Andel Institute.

Animals assist us in many ways, most notably as service and research animals. This session explores how service and research animals are selected, trained, and used. The required review process for using animals for research purposes will also be discussed.



Contributed Papers (1 p.m.-2 p.m.)

How Evidence-Based Medical Information Can Influence Patient Safety

Presented by: Janice Heather, MSLS
Keweenaw Medical Center
Laurium, Michigan

The Joint Commission continues to place a high priority on patient safety. This paper will review how Medical Librarians can become involved in patient safety at their institutions.

Michigan Go Local: Bringing Health Service Information to Michigan Residents

Presented by: Annette Healy, Linda Draper and Ellen Marks
Wayne State University, Detroit, Michigan

The National Library of Medicine has created Go Local, a project that assists consumers in locating health services in their community, as well as linking them to the authoritative health information in MedlinePlus. Many Michigan communities lack tools of this type. In addition to benefiting state residents, Go Local offers librarians an opportunity to highlight services at their institutions. The Shiffman Medical Library at Wayne State University was selected to lead the creation of the Michigan Go Local initiative. Discussion will include the current status of the project, opportunities for participation, and publicity strategies.

What Makes a Librarian Successful at Work?

Presented by: Arlene Weismantel, MLS, AHIP
Michigan State University, East Lansing, Michigan

Research has demonstrated that personality, as assessed by standard instruments like the Five Factor model, is as valuable as cognitive ability in predicting job performance. Components of the Five Factor model include extraversion, conscientiousness, emotional stability, agreeableness, and openness to experience. Though conscientiousness is positively related to job performance across the majority of jobs, different jobs require different personality profiles. This paper will discuss what to look for in job candidates and what jobs are compatible with the various personality types and whether it's possible to modify one's own personality type.

CONFERENCE PARTICIPANTS





CRYSTAL MOUNTAIN RESORT



Thank You for Visiting
CAMP MHSLA -
Have a safe trip home!

