

MHSLA NEWS

No. 82

Fall 2006

NEWSLETTER OF THE MICHIGAN HEALTH SCIENCES LIBRARIES ASSOCIATION

President's Message: Ask Not What MHSLA Can Do For You...

By Arlene Weismantel, MLIS, AHIP
Head, Main Library Reference, Michigan State University Libraries

I first became involved with MHSLA in 2000 and have read numerous pleas for more member participation in the organization from past presidents in this column. But this plea for participation is far more specific because of the hard work of the Strategic Planning Committee. You don't have to scratch your head and wonder what tasks need to be accomplished because our Strategic Plan that makes this obvious. Refer to page four of the [plan](#), decide how you are able to contribute, and then contact the [President](#) or any [Board](#) member and let us know how you want to help.



MHSLA makes an effort to be a useful, practical organization. I have always been impressed by how well the organization serves the membership by providing high quality educational programming and group purchasing opportunities. The other associations I belong to have never provided me with the same quality programs and they cost much, much more. Therefore, I feel obligated to devote some time to making MHSLA better; however, I don't devote time to MHSLA solely

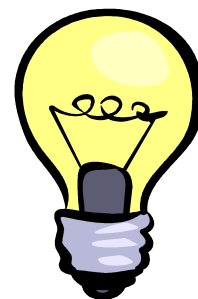


CONTENTS

President's Message	1
MHSLA Education Conference Programs	2
Conference Scholarship Winners	4
Using DOCLINE Effectively	4
Conference Events	5
Using RSS Feeds	6
Leadership Changes at U. of Michigan	7
Announcements	8

because I feel obligated to do so. Working on MHSLA projects is fun. I have found talented colleagues who can be a valuable source of professional advice and support.

So, what opportunities are listed on page four of the Strategic Plan? They range from the very ambitious “perform research on the value of hospital libraries” to the very attainable “provide every new and renewing member with a ‘welcome kit’ including communication aids and a list of member benefits’. While some of the tasks could involve a multi-year commitment, others are of limited duration and do not always require attending Board meetings, a recognized sacrifice in this time of rising gas prices.



It may only take a few minutes to make a significant contribution to the organization! If you’ve gone to a conference, like Computers in Libraries or Midwest Chapter of the Medical Library Association, and see a great speaker who would be willing to present at a MHSLA conference, take down their contact information and let the Education Committee know. Or you can simply write an article for the MHSLA News to share the content of the presentation you attended.

In conclusion, I’d like to thank all of the people who have worked so hard to make this a productive year for MHSLA. I would like to extend a special thank you to the Strategic Planning Committee as well as the Education and Local Arrangements Committees. The Strategic Plan, if diligently followed, will take MHSLA successfully into the future. The Education and Local Arrangements committees are working hard to make sure that our Annual Conference is stimulating, entertaining and will help us become better information professionals.

I hope to see all of you at the Conference on the campus of Michigan State University, October 18-20. The campus is lovely during the fall; colorful and cool. Each fall on a college campus is a new beginning filled with promise, a blank notebook soon to contain the knowledge of the ages. It’s a time to renew old friendships and make new ones. The MHSLA Conference holds this promise as well.

Are You Ready for these 2006 Annual MHSLA Education Conference Programs?



*By Yvonne Boudreau,
Chair, Education Committee
Senior Information Research Specialist, Munson Healthcare*

East Lansing is truly the perfect location for the 2006 Annual MHSLA Education Conference! With the conference theme “MHSLA State University : a Capital Conference” the event promises to be a

medical librarian's center for excellence, education and, of course, networking! Registrants have the potential of taking home 12 MLA CE credit hours!

This year's programming will include two CE classes of 8 MLA credit hours – both came highly recommended to the Education Committee by MHSLA Members.

Professor Dr. David Slawson, University of Virginia, will focus on Information Mastery and teach us a formula that will help develop our skills in evaluating the relevance, validity and usefulness of the medical information that we provide.

Deb Nelson Dunbar, Indiana University, will focus on Conflict Management and teach us a working model to be able to seize precarious situations. Wherever choices exist in the workplace, there is potential for disagreement. Learn to use communication tools, identify the root causes and to create effective solutions. This class is perfect for anyone interested in securing or building upon leadership roles within their institution.

Dr. Slawson will also present a dynamic keynote address – you truly do not want to miss this! Additionally, the State Librarian, Nancy Robertson, will provide an update on the Library of Michigan's new resources and services.

And, yes....the rumors are true...Roundtables are back! Help to facilitate the discussions by rotating between 7 topics of "Roundtables" -- share experiences and springboard new ideas.



Our Closing Keynote Address will be presented by the Immediate Past President of Medical Library Association, M.J. Tooley, who will inject us with her infectious enthusiasm by sharing her career strategies of making investment decisions for the future of our professional careers as Medical Librarians.

A National Library of Medicine Symposium will provide a quick overview on the status of the activities at the Greater Midwest Region (GMR); and update on the Michigan Go Local project and new tricks in PubMed. Lastly, for those of us interested in sharpening our research skills, Professor Dr. Lynda Baker, Wayne State University Library and Information Science Program, will provide a 4 MLA credit hour class "Evaluating Research Articles in Academic Journals". This class will provide a refresher on evaluating the validity and reliability of that "golden" research article.

Summer's almost over! The classes at "MHSLA State University" begin soon! Be sure to send in your registration forms now!





2006 Scholarship Winners

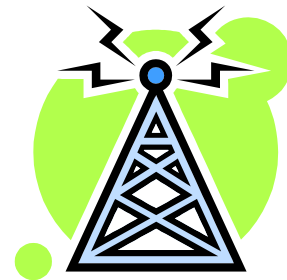
*By Yvonne Boudreau,
Chair, Education Committee
Senior Information Research Specialist, Munson Healthcare*

The MHSLA Education Committee is delighted to announce the 2006 Student Scholarship Winners. The 2006 winners have all been awarded a “full ride” to the Annual Education Conference.

This year’s student winners are Heidi Schroeder and Emily Mazure. Heidi is a Health Sciences student from the Wayne State University LIS Program. This Fall Semester, Heidi has chosen to focus her independent studies on the subject of Evidence-Based Medicine in the Medical Library. Emily is the University of Michigan’s School of Information student winner. Emily works at the Taubman Medical Library and has an ever-increasing penchant for her work at the Reference Desk. Please be sure to welcome, or mentor, both Heidi and Emily at this year’s Conference. Lastly, the winner of the scholarship for a MHSLA member who has not previously attended Conference is, Sladen Library’s Nancy Bulgarelli. Congratulations to all of the 2006 MHSLA Student Scholarship Winners!

Using DOCLINE Effectively

*By Jennifer Barlow,
Resource Sharing Chair,
Library Manager, Borgess Health Alliance*



The National Library of Medicine’s DOCLINE system is an efficient method for placing interlibrary loan requests. DOCLINE stores information about the journal holdings of member libraries, and automatically matches requests with libraries that can fill them.

DOCLINE works best when we provide the system with complete and accurate information. Have you reviewed your library’s SERHOLD listings lately? SERHOLD is where individual libraries’ journal holdings information is stored. NLM requires that DOCLINE libraries review and update their holdings information at least annually. Only titles which are available for interlibrary loan should be included in your SERHOLD listings. Do not report electronic holdings if you are not legally permitted to share them.

Institutional profiles must also be kept up to date. Take time to verify that your contact information is complete (including email address), and that delivery methods listed for borrowing and lending are accurate. Be sure you have specified the alternate delivery methods you can accept, as this affects the routing of requests. Placing delivery preferences in the “Comments” field, as well as in the delivery field, is a kindness to your lending partners, and can help ensure that you receive materials via your preferred method.

When lending, pay attention to the requestor's preferred delivery method. Those of us who specify "web or email delivery only" really mean it! We do not want our articles mailed or faxed. If you cannot produce PDF files, make sure your profile reflects this so requests will refer on to someone who can.

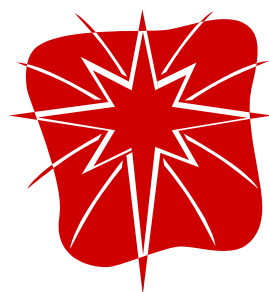


NLM also asks that member libraries review their routing charts annually. DOCLINE groups (such as MHSLA's) can now be placed in routing tables. In general, NLM recommends that a group be placed in a cell by itself. You can also add specific libraries from your group into other cells; DOCLINE's routing algorithm will make sure that those libraries are only considered once as each request is matched to a lender.

Charniel McDaniel from the Greater Midwest Region, National Network of Libraries of Medicine is responsible for reviewing Michigan libraries' routing table changes as they are submitted. With recent changes to DOCLINE, this approval process has been somewhat delayed, but Charniel anticipates that she'll be back to a three-day turnaround for approvals very soon. This approval process is an NLM requirement and is thought to be an extra quality check.

Charniel provided these rules of thumb for setting up your routing tables. Cells 1, 2 and 3 are for first choice partners, local groups or consortiums. Cells 4, 5 and 6 are for second choices and special collections. Cells 7, 8 and 9 are for resource libraries. Free and lower-cost options should be placed in lower cells. NLM does allow some flexibility for special relationships and local situations.

By giving DOCLINE accurate information on our journal holdings and institutional preferences, and keeping our routing tables updated, we can maximize the effectiveness of this amazing cooperative effort.



MHSLA Annual Conference Events and Attractions

*By Mike Simmons
Chair, Local Arrangements Committee
Manager, Sparrow Medical Library*

The 2006 MHSLA Annual Education Conference is fast approaching! The Mid-Michigan Health Sciences Libraries welcome you to East Lansing, Michigan at the Kellogg Center on the beautiful campus of Michigan State University, October 18-20, 2006. Registration packets and a "Schedule of Classes" for 'MHSLA State University' have been mailed to MHSLA members. Additional registration forms and other information are available at <http://www.mhsla.org>. Unlike other universities, attendance at MHSLA State University will not break

the bank or force you to take out a student loan. In fact, it is not often that you encounter the range of benefits and quality programming that one finds at any MHSLA conference. And as we all know, college life is not all books and study. There will be plenty of time to socialize and catch up with old friends or make new ones. Members should also make sure to check out all the exciting attractions downtown East Lansing has to offer! Food may also be a bit different than those college days. No dorm food at this conference! Enjoy gourmet dining whether it is at the Welcome Reception or the Special Event. This year's special event has a pronounced Michigan theme as all attendees will be able to enjoy a specially catered meal at the [Michigan Historical Center](#) followed by a self-guided tour of the museum and entertainment by the Michigan Troubadour, [Neil Woodward](#). Hope all of you can make it!



Using RSS Feeds

by Jaime Friel Blanck

Health Sciences Librarian

Michigan State University Libraries

RSS feeds have been around for a while now, but medical librarians are still discovering new ways to use them to better serve their clients. RSS stands for “Really Simple Syndication”. Briefly explained, RSS uses feeds created using XML coding to automatically notify users when a web site is updated. Aggregators such as [Bloglines](#), [Google Reader](#), and [Firefox Sage](#) are just a few of the many free, internet-based products available that let users track their RSS feeds from one location. The purpose of this article isn’t to teach you how to use RSS feeds. There are many good [online tutorials](#) available that demonstrate the simple steps to creating RSS feeds for a number of databases of interest to medical librarians such as PubMed and SCOPUS. I hope instead to persuade you that RSS feeds are a useful tool for staying current with the literature. With many journals offering Table of Contents alerts via email and database supported features such as MyNCBI, why is there a need for yet another new technology? Well, there are many reasons. RSS feeds allow users to track all of their information needs in one place. Individual’s email accounts are used for so many purposes – personal communication, professional communication, listservs, spam, etc. Adding Table of Contents alerts and search updates via email into the

mix makes it easy for information to get overlooked and go unused. Besides, not all journals supply Table of Contents email alerts, and it is quite simple to create an RSS feed in PubMed for a journal that does not offer one of its own. RSS feeds also allow greater customization than Table of Contents feeds. Many databases allow you to create RSS feeds for individual searches. Aggregators create a separate, web-accessible location for users to keep all of their updates organized in one place, rather than forcing them to check multiple locations for updates. You can even track your favorite Podcasts through an aggregator! Users can log into their aggregator only when they are ready to catch up on their reading. A snippet of the new content is displayed in the aggregator window, so the reader can preview the content before deciding whether or not to read more. Feeds from PubMed display the article abstracts and links to full text in PubMed Central. Aggregators also offer tools to help users keep their feeds organized. Bloglines, for example, lets you create folders for your feeds so that every time a new article is found using one of your feeds, it is automatically added to a specific folder. Google Reader offers a similar feature, letting users add "labels" to their feeds. Using RSS lets you keep track of all of your based reading in place, including your favorite blogs and news web sites. Why not get started now! Below are some blogs written by fellow medical librarians, try subscribing to them!

- * [The Krafty Librarian](#)
- * [The Cornflower](#)
- * [Musings of a Medical Librarian Maven](#)
- * [Hospital Library Advocacy](#)
- * [Medlibrarian.net](#)
- * [davidrothman.net](#)
- * Check out the [LIS Wiki](#) for even more!!



Leadership Changes at University of Michigan

*By Patricia Martin
Head, Electronic Services
Taubman Medical Library, University of Michigan*

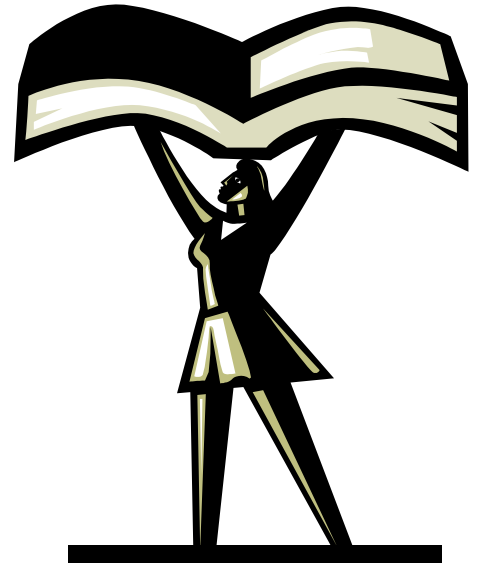
The University of Michigan is pleased to announce the appointments of Jane Blumenthal as Director, Health Sciences Libraries, effective July 1, 2006, and Nancy Allee as Deputy Director, Health Sciences Libraries, effective September 1, 2006.

Jane comes to the University of Michigan from the position of assistant dean for knowledge management and director of the Dahlgren Memorial Library at Georgetown University. She has extensive administrative experience in health sciences libraries and has led initiatives in integrating library instruction into the curriculum in medicine, nursing, and health studies; expanding digital library collections; promoting scholarly publishing; forming library and information technology partnerships; and planning library and space renovation.

Jane is recognized as a leader in academic health science libraries, having recently served on the board of directors of the Association of Academic Health Sciences Libraries, as chair of the Leadership and Management Section of the Medical Library Association, and as a member of the Regional Advisory Committee for the Southeastern/Atlantic Region of the National Network of Libraries of Medicine.

Nancy Allee has been promoted to the position of deputy director for the Health Sciences Libraries. Nancy currently is director of Public Health Library & Informatics at the University of Michigan, managing the public health library overseeing and coordinating instructional technology, online learning, outreach, and web services for the School of Public Health.

As deputy director, Nancy will be responsible for overseeing the day-to-day operations of the Health Sciences Libraries and will work closely with the director on the planning and assessment of programs and services as well as a variety of special initiatives.



News and Announcements

The following MHSLA members will be exhibiting posters at fall education conference. Be sure you see them all!

Karen Tubolino: "Allen Park VA Hospital Archives"
Tammy Mays: "NN/LM Greater Midwest Region"

(Poster Presentations - continued)

Pat Vinson: "Metropolitan Detroit Medical Library Group"

Maureen Watson: "MHSLA Archives"

Michael Simmons: "Moving a Hospital Library"

Gale Orem: "Accuracy of References in the Ophthalmalmic Literature"

Mary Fitzpatrick: "ERHSLA Invitation to the 2007 Conference"

Lynda Baker: Topic to be announced

Doreen Bradley: Topic to be announced



While you are at the MHSLA Annual Education Conference don't pass up the opportunity to meet with those wonderful vendor representatives who are there to introduce us to their exciting products! The following vendors will be giving presentations:

* Wednesday, October 18th, 12:30 PM

Speaker: Robert Morrissey, OVID

"Appropriate, Evidence-Based Answers in an Instant"

* Thursday, October 19th, 12:30 PM

Speaker: Christian Barrock, EBSCO

Information Services

"EBSCOhost CINAHL

* Friday, October 20th, 8:30 AM

Speaker: Jackie Prentice

"Preparing for the Digital Age with EOS
Web"

* Friday, October 20th, 12:30 PM

Speaker: Maureen Jordan

"Integrated Reference and Clinical Decision
Support: Connecting Information, Data, and
Real Practice for Medicine and Nursing"

MHSLA NEWS

MHSLA News, ISSN 1543-0359, is published three times each year by the Michigan Health Sciences Libraries Association,
<http://www.mhsla.org>.

Please send contributions or suggestions to:
MHSLA News Editor
Jaime Friel Blanck
Michigan State University Libraries
100 Library
East Lansing, MI 48824-1048
or
blanckj@msu.edu